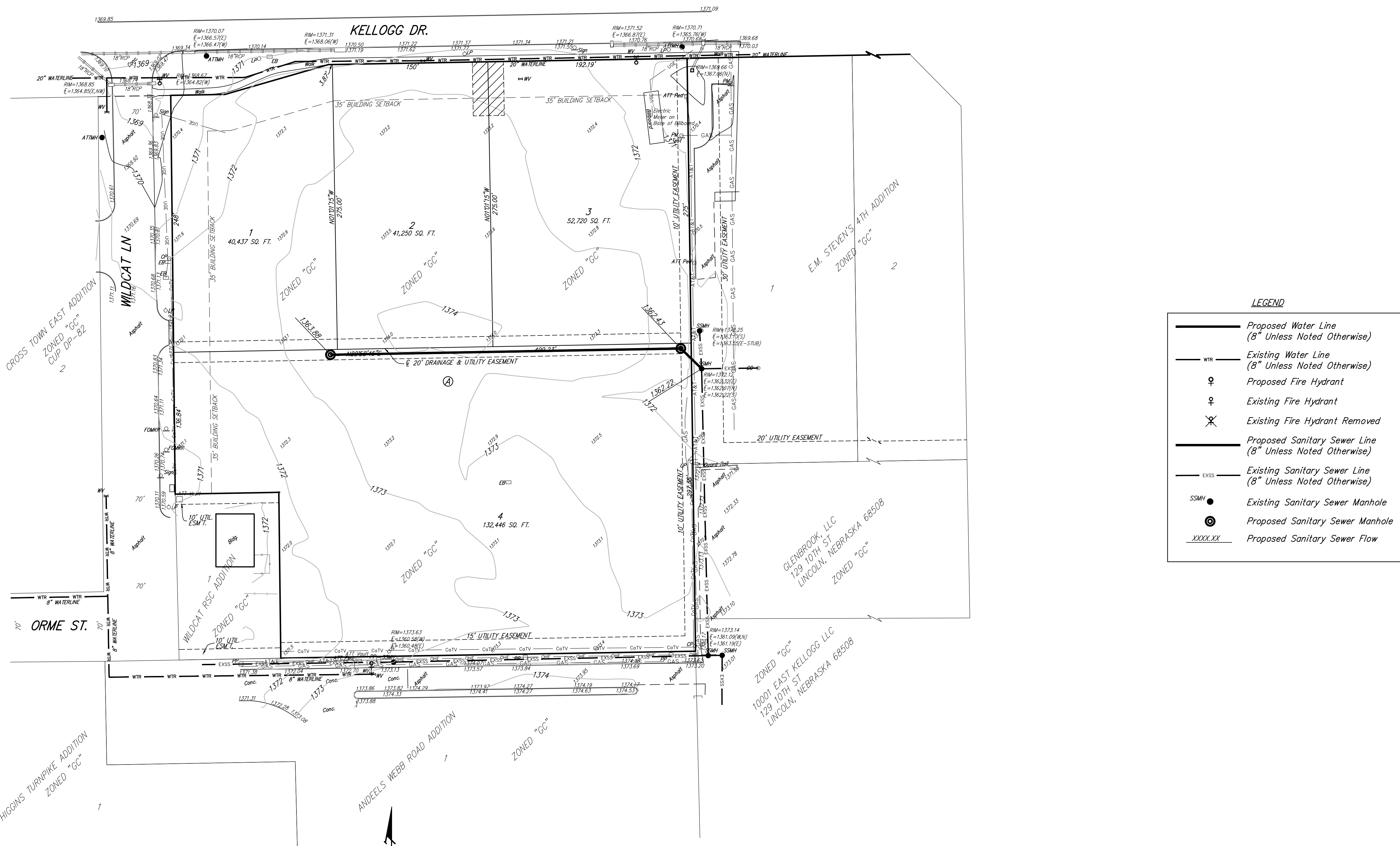


UTILITY PLAN

WILDCAT-KELLOGG ADDITION

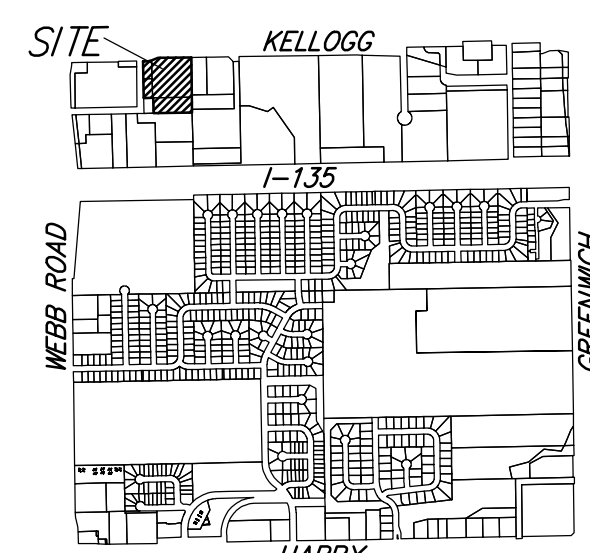
WICHITA, SEDGWICK COUNTY, KANSAS

KELLOGG AVE.(US 54)



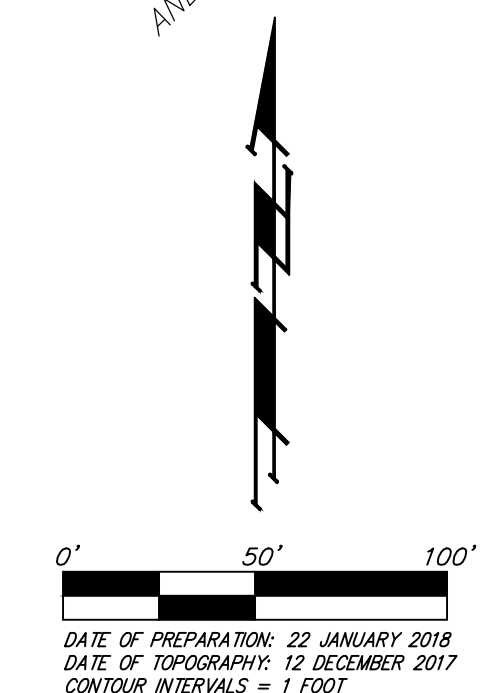
LEGEND

	Proposed Water Line (8" Unless Noted Otherwise)
	Existing Water Line (8" Unless Noted Otherwise)
	Proposed Fire Hydrant
	Existing Fire Hydrant
	Existing Fire Hydrant Removed
	Proposed Sanitary Sewer Line (8" Unless Noted Otherwise)
	Existing Sanitary Sewer Line (8" Unless Noted Otherwise)
	Existing Sanitary Sewer Manhole
	Proposed Sanitary Sewer Manhole
	Proposed Sanitary Sewer Flow



VICINITY MAP
SEC. 28, T27S, R2E

NOTE:
A drainage plan has been developed for the plot and that all drainage easements, rights-of-way, and reserves shall remain at established grades or as modified with the approval of the applicable City or County Engineer and unobstructed to allow for the conveyance of stormwater in accordance with the Stormwater Manual.

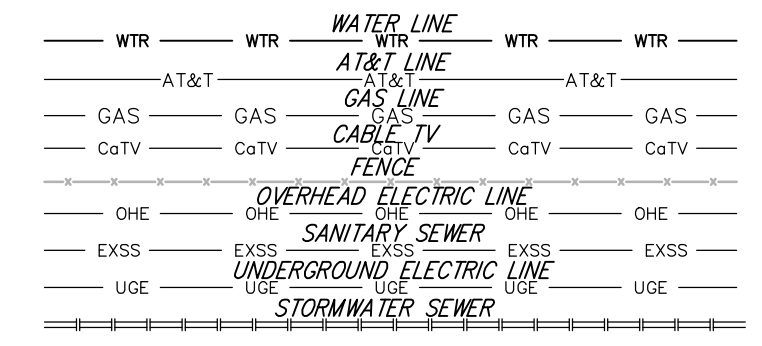


DATE OF PREPARATION: 22 JANUARY 2018
DATE OF TOPOGRAPHY: 12 DECEMBER 2017
CONTOUR INTERVALS = 1 FOOT

- | | |
|---------------------------|---------------------------------|
| CB = Catch Basin | PP = Power Pole |
| CD = Cleanout | Sign = Sign |
| CP = Cable TV Pedestal | SSMH = Sanitary Sewer Manhole |
| DI = Drop Inlet | ATM = ATT Manhole |
| EB = Electric Box | ATT Ped = ATT Pedestal |
| FH = Fire Hydrant | SSMH = Stormwater Sewer Manhole |
| GM = Gas Meter | WM = Water Meter |
| GP = Guard Post (Bollard) | WV = Water Valve |
| LP = Light Pole | TRM = Transformer |
| FOMR = Fiber Optic Marker | |

OWNER/DEVELOPER:
HOOVER ROAD, LLC
ATTN: JOHNNY STEVENS
1717 N. WATERFRONT PARKWAY
WICHITA, KS 67206

BENCHMARK:
SQUARE CUT TOP OF CURB 14'± WEST OF THE MOST NORTHERLY SE CORNER OF RESERVE "A"
ELEVATION = 1370.56 NAVD88



UTILITY PLAN

WILDCAT-KELLOGG ADDITION

23 January 2018

Baughman Company, P.A.
315 Ellis St. Wichita, KS 67211 F 316-262-7271 F 316-262-0149
ENGINEERING | SURVEYING | PLANNING | LANDSCAPE ARCHITECTURE