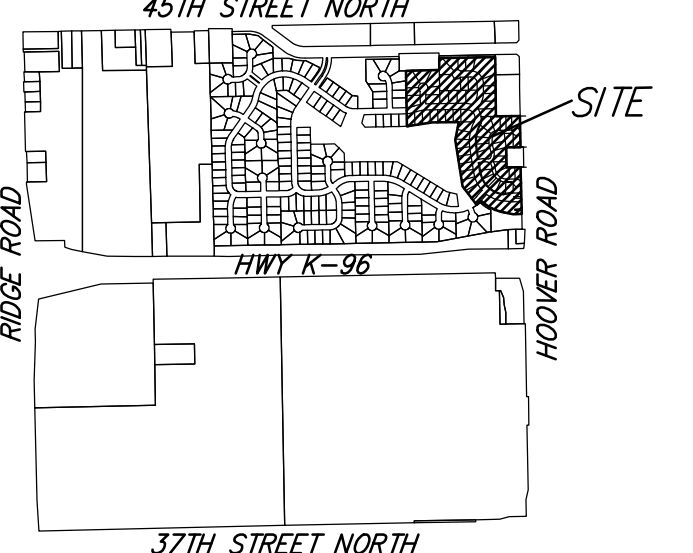
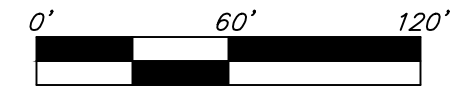
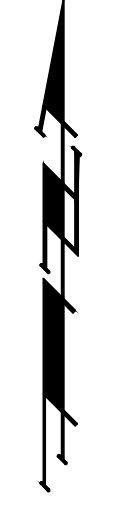


# UTILITY PLAN

## EDGE WATER 3RD ADDITION

### WICHITA, SEDGWICK COUNTY, KANSAS



VICINITY MAP  
SEC. 27, T26S, R1W

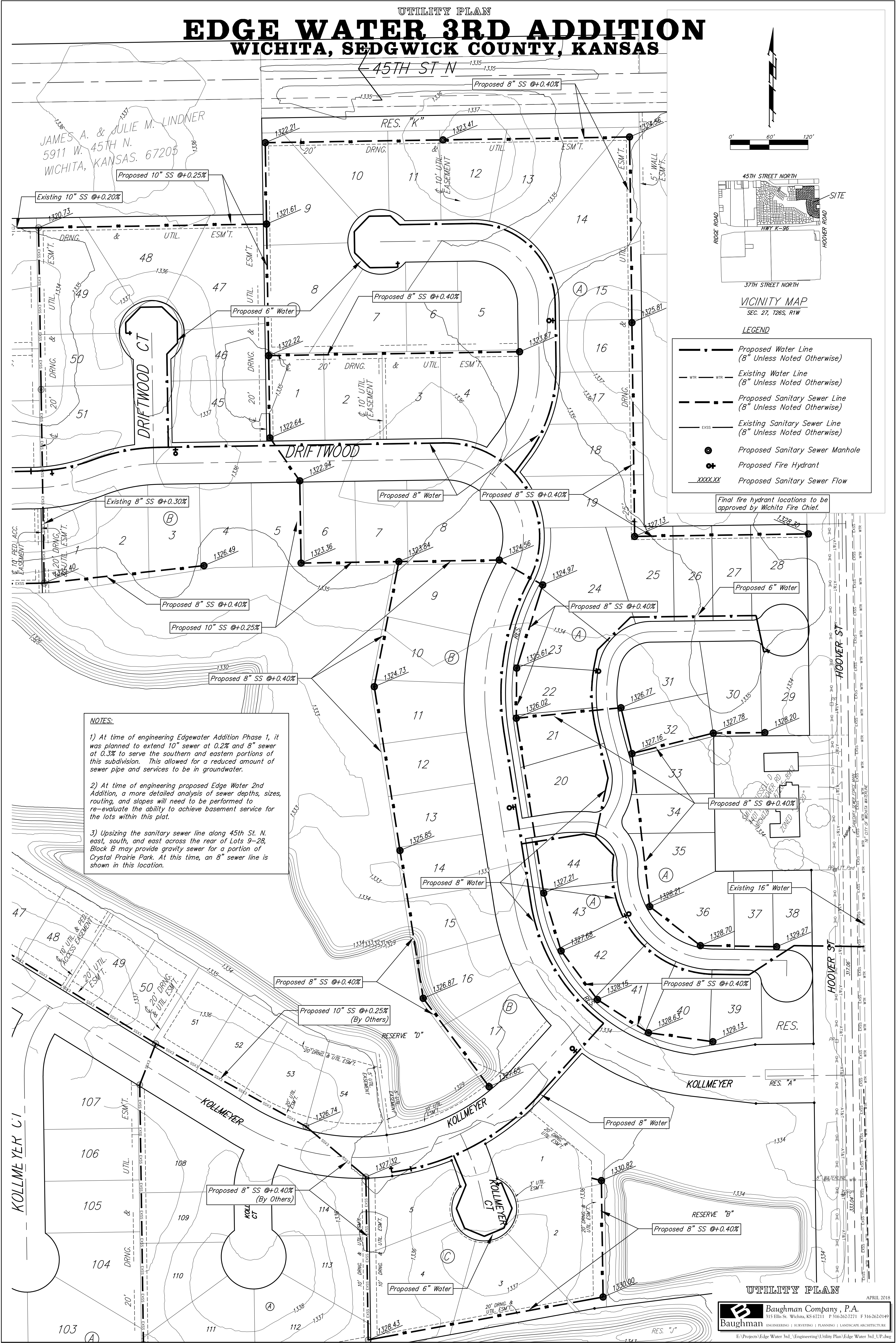
**LEGEND**

	Proposed Water Line (8" Unless Noted Otherwise)
	Existing Water Line (8" Unless Noted Otherwise)
	Proposed Sanitary Sewer Line (8" Unless Noted Otherwise)
	Existing Sanitary Sewer Line (8" Unless Noted Otherwise)
	Proposed Sanitary Sewer Manhole
	Proposed Fire Hydrant
	Proposed Sanitary Sewer Flow

Final fire hydrant locations to be approved by Wichita Fire Chief.

**NOTES:**

- 1) At time of engineering Edgewater Addition Phase 1, it was planned to extend 10" sewer at 0.2% and 8" sewer at 0.3% to serve the southern and eastern portions of this subdivision. This allowed for a reduced amount of sewer pipe and services to be in groundwater.
- 2) At time of engineering proposed Edge Water 2nd Addition, a more detailed analysis of sewer depths, sizes, routing, and slopes will need to be performed to re-evaluate the ability to achieve basement service for the lots within this plat.
- 3) Upsizing the sanitary sewer line along 45th St. N. east, south, and east across the rear of Lots 9-28, Block B may provide gravity sewer for a portion of Crystal Prairie Park. At this time, an 8" sewer line is shown in this location.



**UTILITY PLAN**