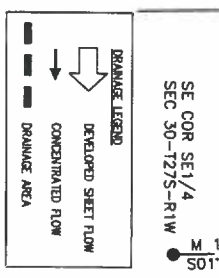
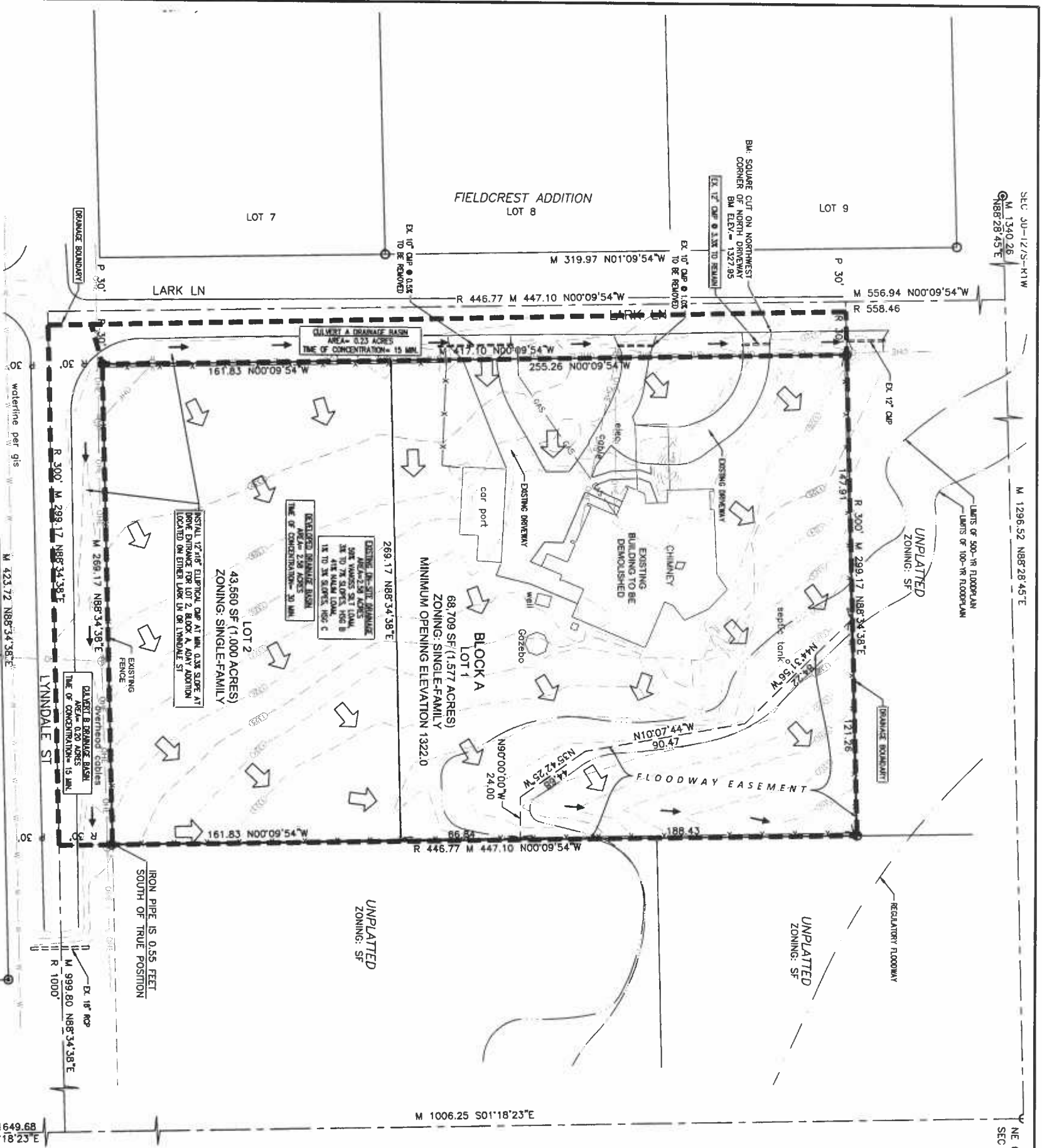


DRAINAGE PLAN
ADAY ADDITION
 A PORTION OF THE SOUTHEAST QUARTER OF SECTION 30,
 TOWNSHIP 27 SOUTH, RANGE 1 WEST OF THE 6TH PRINCIPAL
 MERIDIAN, SEDGWICK COUNTY, KANSAS



ENGINEERING NOTES:

- THE RATIONAL METHOD EQUATIONS WERE USED TO COMPUTE THE PEAK DISCHARGES FOR EXISTING DRAINAGE AND PROPOSED DRAINAGE.
- A PORTION OF THE PROPERTY IS LOCATED IN ZONE XE FLOODPLAIN ON THE MAIZE RIVER (FEMA FLOOD INSURANCE RATE REPORT DATE: DECEMBER 22, 2016). MAIZE RIVER FLOOD PROTECTION DISTRICT (MFPD) HAS BEEN ADVISED OF THIS DEVELOPMENT AND HAS REVIEWED THE PROPOSED DRAINAGE PLAN. MFPD HAS SHOWN FOR FEMA FLOOD PROTECTION DISTRICT (MFPD) THAT THE PROPOSED DRAINAGE PLAN IS SUFFICIENT TO PROTECT THE PROPERTY FROM FLOODING. WATER QUALITY TREATMENT AND DETENTION ARE NOT REQUIRED FOR THIS DEVELOPMENT SINCE THE DISTURBED AREA IS PROTECTED TO BE ANNUAL PROPOSED IMPROVEMENTS AREA IS PROTECTED TO BE UNDER ONE ACRE.

ENGINEERING NOTES:

- THE RATIONAL METHOD EQUATIONS WERE USED TO COMPUTE THE PEAK DISCHARGES FOR EXISTING DRAINAGE AND PROPOSED DRAINAGE.
- A PORTION OF THE PROPERTY IS LOCATED IN ZONE XE FLOODPLAIN ON THE MAIZE RIVER (FEMA FLOOD INSURANCE RATE REPORT DATE: DECEMBER 22, 2016). MAIZE RIVER FLOOD PROTECTION DISTRICT (MFPD) HAS BEEN ADVISED OF THIS DEVELOPMENT AND HAS REVIEWED THE PROPOSED DRAINAGE PLAN. MFPD HAS SHOWN FOR FEMA FLOOD PROTECTION DISTRICT (MFPD) THAT THE PROPOSED DRAINAGE PLAN IS SUFFICIENT TO PROTECT THE PROPERTY FROM FLOODING. WATER QUALITY TREATMENT AND DETENTION ARE NOT REQUIRED FOR THIS DEVELOPMENT SINCE THE DISTURBED AREA IS PROTECTED TO BE ANNUAL PROPOSED IMPROVEMENTS AREA IS PROTECTED TO BE UNDER ONE ACRE.

Total Existing Drainage Summary Chart - Rational Method

Drainage Basin	Drainage Area	Return Period	Tc (min)	Intensity (in/hr)	Peak Discharge (cfs)
1	10	2	0.37	3.86	2.71
2	10	0.44	0.44	3.29	3.72
3	25	0.44	0.44	3.29	4.62
4	50	0.52	0.52	4.33	5.81
5	100	0.56	0.56	4.78	6.91
Total	238	25	0.44	3.29	17.73

Total Developed Drainage Summary Chart - Rational Method

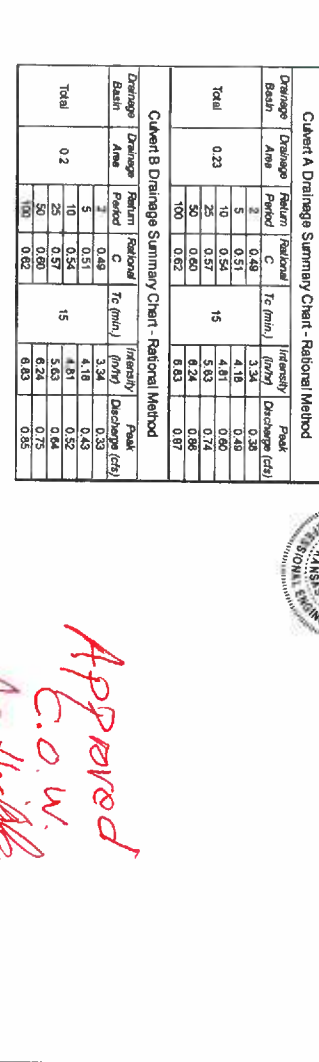
Drainage Basin	Drainage Area	Return Period	Tc (min)	Intensity (in/hr)	Peak Discharge (cfs)
1	5	0.37	0.37	2.64	2.71
2	10	0.44	0.44	3.29	3.72
3	25	0.44	0.44	3.29	4.62
4	50	0.52	0.52	4.33	5.81
5	100	0.56	0.56	4.78	6.91
Total	238	25	0.44	3.29	17.73

Chart A Drainage Summary Chart - Rational Method

Drainage Basin	Drainage Area	Return Period	Tc (min)	Intensity (in/hr)	Peak Discharge (cfs)
1	2	0.44	0.44	4.18	0.38
2	10	0.44	0.44	4.18	0.40
3	25	0.57	0.57	5.83	0.72
4	50	0.60	0.60	6.24	0.86
5	100	0.62	0.62	6.63	0.97
Total	0.23	15	15	6.83	0.56

Chart B Drainage Summary Chart - Rational Method

Drainage Basin	Drainage Area	Return Period	Tc (min)	Intensity (in/hr)	Peak Discharge (cfs)
1	2	0.44	0.44	4.18	0.33
2	10	0.44	0.44	4.18	0.43
3	25	0.57	0.57	5.83	0.72
4	50	0.60	0.60	6.24	0.86
5	100	0.62	0.62	6.63	0.96
Total	0.2	15	15	6.83	0.56



APPROVED

C.O.W.

9-13-18

See file

CERTIFIED ENGINEERING DESIGN, P.A.

1935 WEST MAPLE STREET
 WICHITA, KANSAS 67213
 PH: (316) 262-8808
 FAX: (316) 262-1869

CIVIL DRAWINGS PREPARED BY:

NOTE: BOUNDARY SURVEY COMPLETED BY ANDERSON WICHITA, KANSAS 67211 (316) 263-0082

DATE: NOV 18, 2018

TOTAL 1