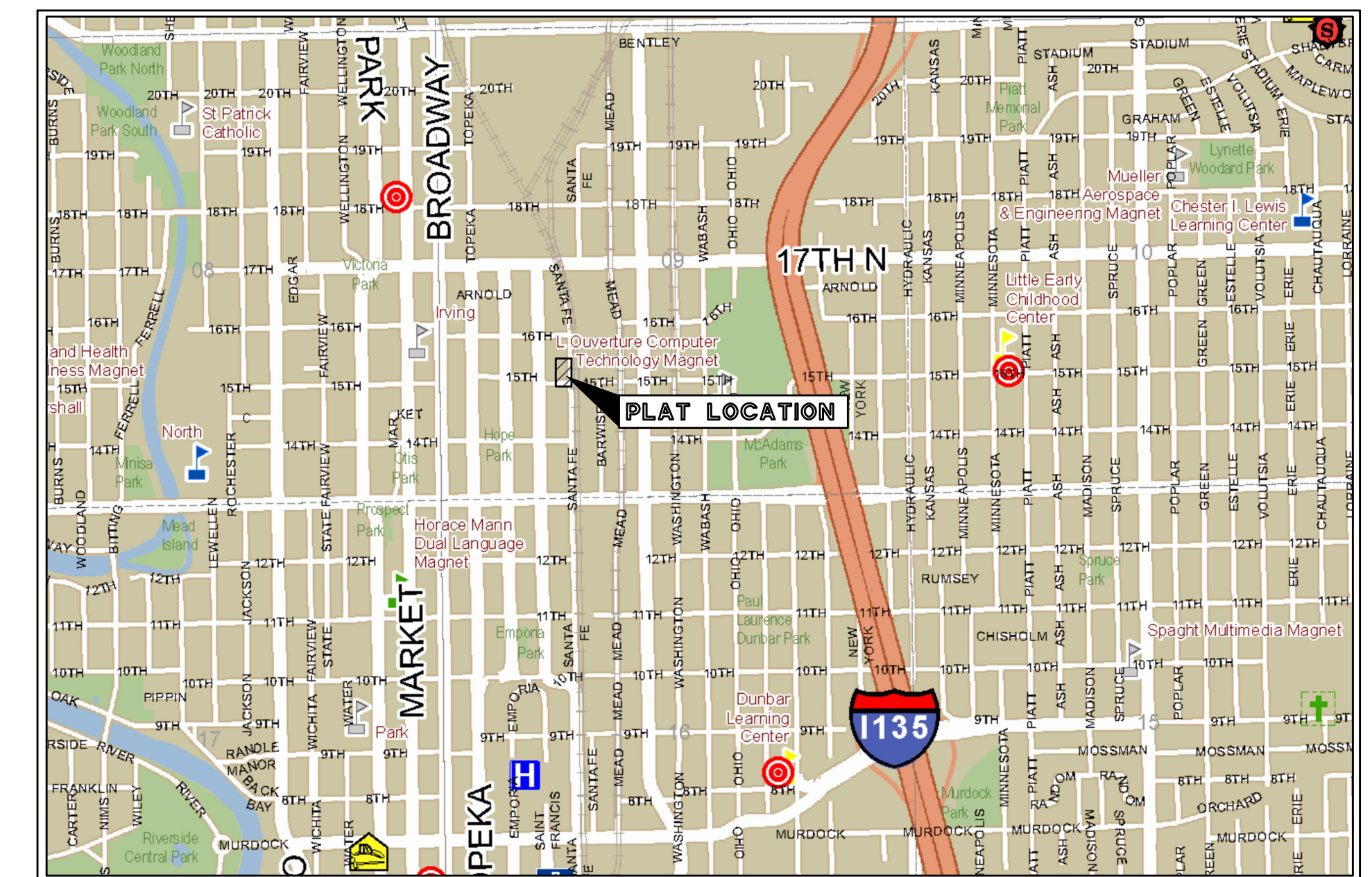


DRAINAGE PLAN BOOZE ADDITION

A PORTION OF THE SOUTHWEST QUARTER OF THE NORTHEAST QUARTER OF SECTION 9, TOWNSHIP 27 SOUTH, RANGE 1 EAST OF THE 6TH PRINCIPAL MERIDIAN, WICHITA, SEDGWICK COUNTY, KANSAS



VICINITY MAP
1"=1600'

ENGINEERING NOTES:

1. THE RATIONAL METHOD EQUATIONS WERE USED TO COMPUTE THE PEAK DISCHARGES FOR EXISTING DRAINAGE AND PROPOSED DRAINAGE.
2. THE PROPERTY IS LOCATED IN ZONE X ON THE FEMA FLOOD MAP (FIRM #2017300354G), EFFECTIVE DATE DECEMBER 22, 2016.
3. WATER QUALITY TREATMENT AND DETENTION ARE NOT REQUIRED FOR THIS DEVELOPMENT SINCE THE DISTURBED ACREAGE IS PROJECTED TO BE MINIMAL. PROPOSED IMPERVIOUS AREA IS PROJECTED TO BE UNDER ONE ACRE.

LEGAL DESCRIPTION:

LOTS 11, 13, 15, 17, 19, 21, 23, 25, AND 27, FIFTH AVE, NOW SANTA FE AVE, NORTH PARK ADDITION TO WICHITA, SEDGWICK COUNTY, KANSAS.

Existing Drainage Basin A - Rational Method

Drainage Basin	Drainage Area	Return Period	Rational C	Tc (min.)	Intensity (in/hr)	Peak Discharge (cfs)
Total	0.14	2	0.68	15	3.34	0.32
		5	0.69		4.18	0.40
		10	0.73		4.81	0.49
		25	0.75		5.63	0.59
		50	0.78		6.24	0.68
100	0.80	6.83	0.76			

Existing Drainage Basin B - Rational Method

Drainage Basin	Drainage Area	Return Period	Rational C	Tc (min.)	Intensity (in/hr)	Peak Discharge (cfs)
Total	0.57	2	0.60	15	3.34	1.14
		5	0.62		4.18	1.48
		10	0.66		4.81	1.81
		25	0.69		5.63	2.21
		50	0.72		6.24	2.56
100	0.74	6.83	2.88			

Developed Drainage Basin A - Rational Method

Drainage Basin	Drainage Area	Return Period	Rational C	Tc (min.)	Intensity (in/hr)	Peak Discharge (cfs)
Total	0.14	2	0.68	15	3.34	0.32
		5	0.69		4.18	0.40
		10	0.73		4.81	0.49
		25	0.75		5.63	0.59
		50	0.78		6.24	0.68
100	0.80	6.83	0.76			

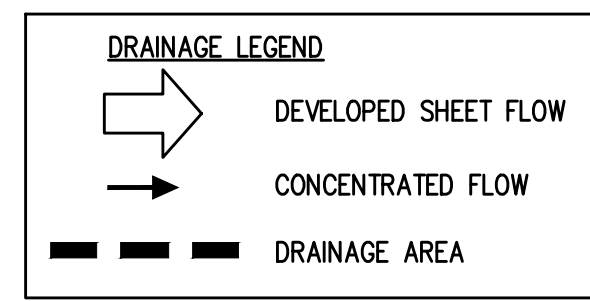
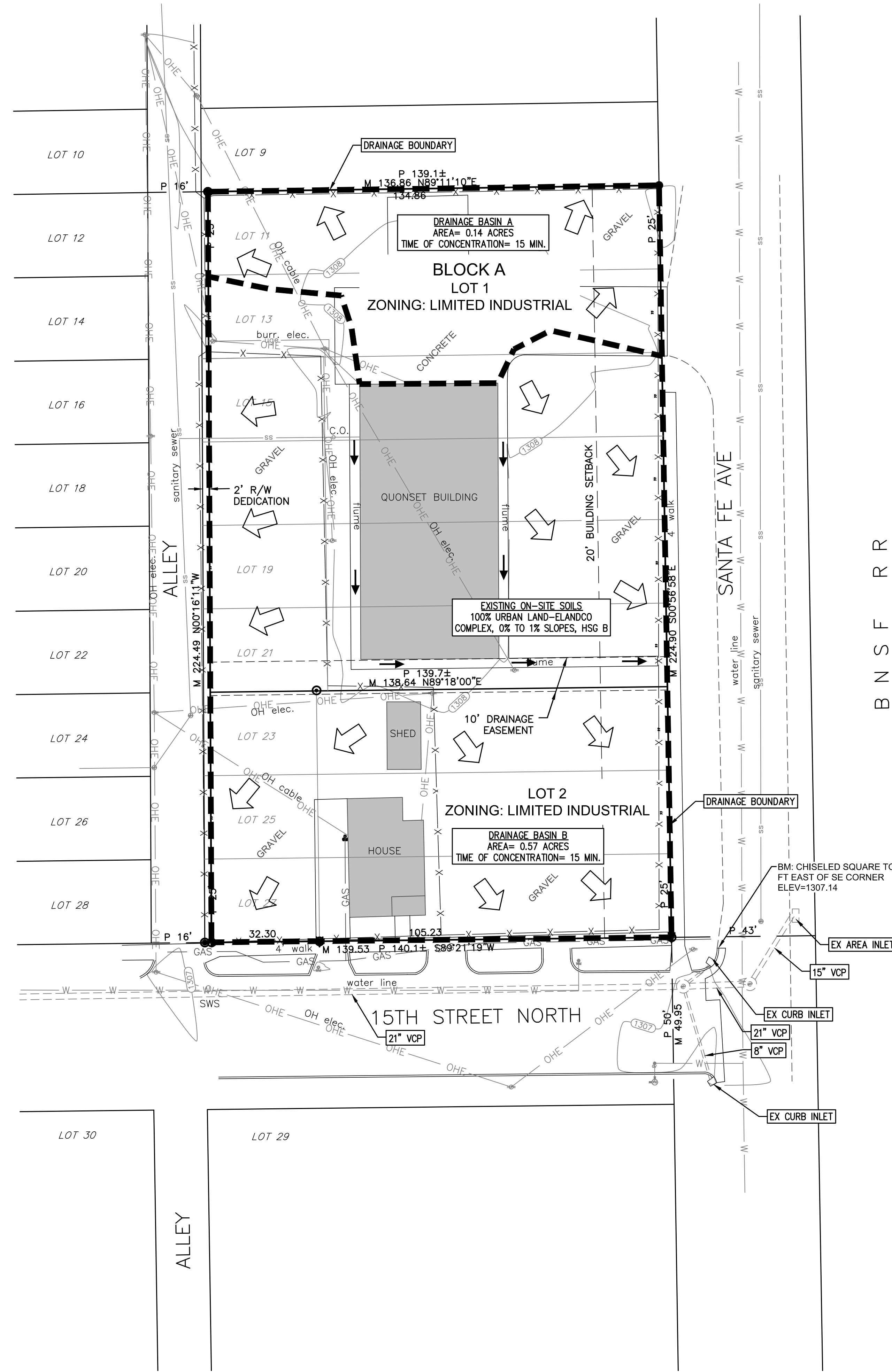
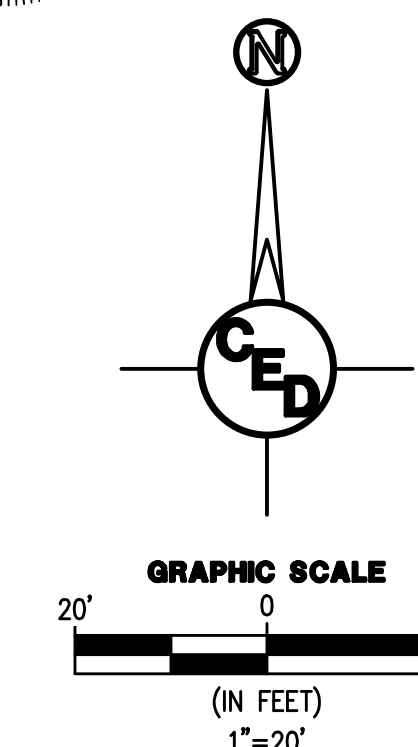
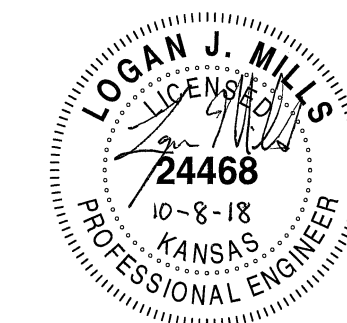
Developed Drainage Basin B - Rational Method

Drainage Basin	Drainage Area	Return Period	Rational C	Tc (min.)	Intensity (in/hr)	Peak Discharge (cfs)
Total	0.57	2	0.68	15	3.34	1.29
		5	0.69		4.18	1.64
		10	0.73		4.81	2.00
		25	0.75		5.63	2.41
		50	0.78		6.24	2.77
100	0.80	6.83	3.11			

LEGEND

- M MEASURED DISTANCE
- R RECORDED DISTANCE
- P PLATTED DISTANCE
- "LS-780" CAPPED REBAR SET
- "SAVOY" CAPPED REBAR FOUND
- "BAUGHMAN" CAPPED REBAR FOUND
- 1/2" IRON PIPE FOUND
- CHISELED "V" IN CONCRETE FOUND
- POWER POLE
- LIGHT POLE
- MANHOLE
- GAS METER
- WATER METER
- WATER VALVE
- FIRE HYDRANT

BENCHMARK:
CHISELED SQUARE ON TOP OF CURB LOCATED APPROXIMATELY 14.5' EAST OF SE CORNER OF LOT 27, FIFTH AVE, NOW SANTA FE AVE, NORTH PARK ADDITION TO WICHITA, SEDGWICK COUNTY, KANSAS ELEV = 1307.14 NAVD88



OWNERS:
BOOZE RENTAL LLC
CONTACT: LARRY BOOZE
105 N LINCOLN ST
CHENEY, KS 67025

BOOZE, LARRY & SUE
10818 E MAPLE GROVE RD
MT HOPE, KS 67108

SURVEYOR:
ARMSTRONG LAND SURVEY, P.A.
1601 E. HARRY
WICHITA, KANSAS 67211
(316) 263-0082

NOTE: BOUNDARY SURVEY COMPLETED BY ARMSTRONG LAND SURVEY, P.A., ON OR ABOUT OCTOBER 2, 2018.

CIVIL DRAWINGS PREPARED BY:

CERTIFIED ENGINEERING DESIGN, P.A.

1935 WEST MAPLE STREET
WICHITA, KANSAS 67213
PH: (316) 262-8808
FAX: (316) 262-1669

SHEET 1
TOTAL 1