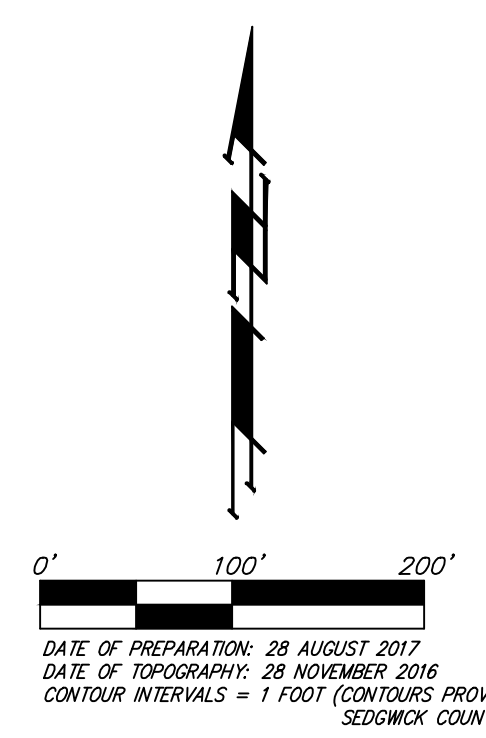
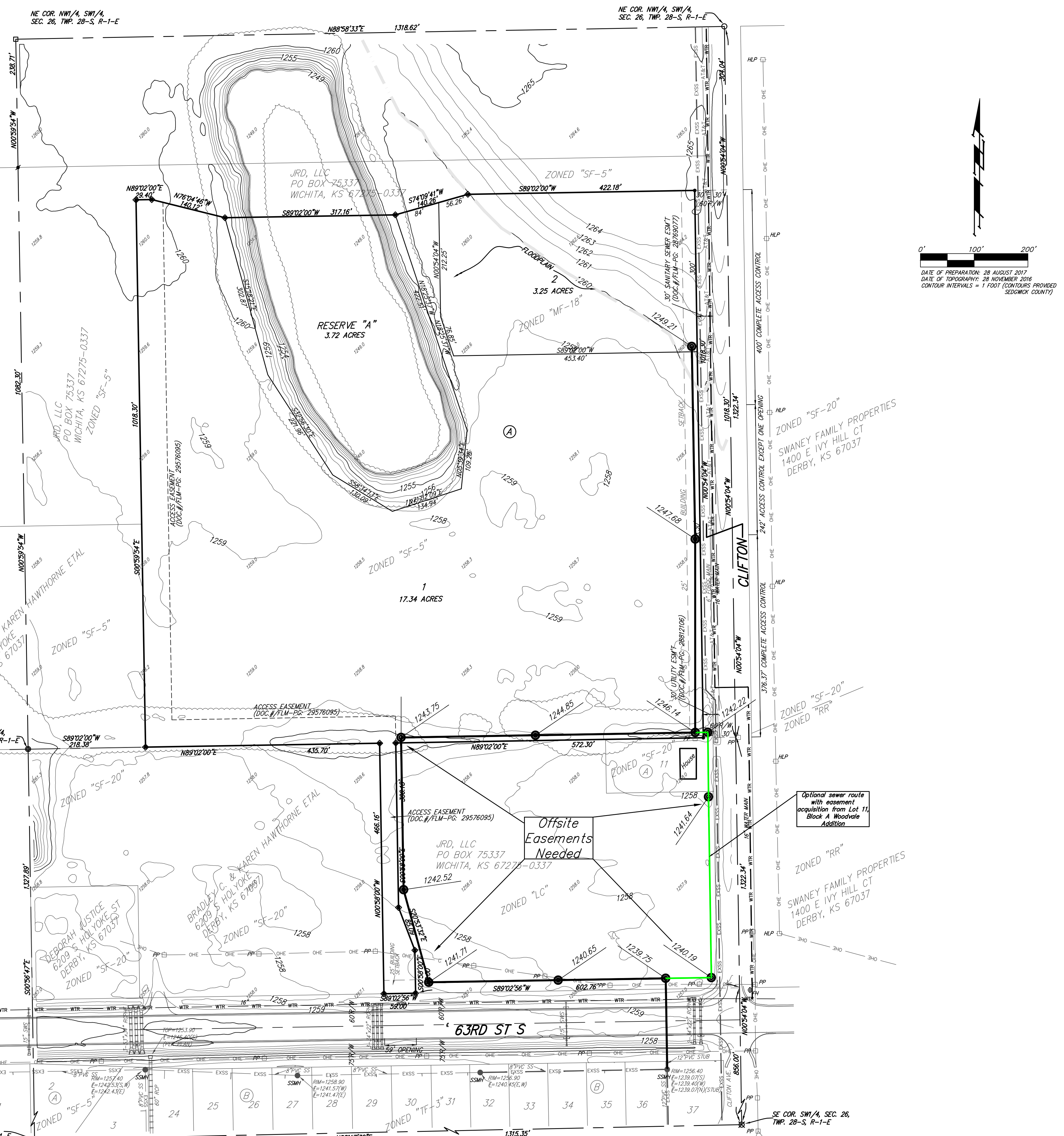


# UTILITY PLAN

## THE WELL ADDITION

### WICHITA, SEDGWICK COUNTY, KANSAS



**LEGEND**

	Proposed Water Line (8" Unless Noted Otherwise)
	Existing Water Line (8" Unless Noted Otherwise)
	Proposed Fire Hydrant
	Existing Fire Hydrant
	Existing Fire Hydrant Removed
	Proposed Sanitary Sewer Line (8" Unless Noted Otherwise)
	Existing Sanitary Sewer Line (8" Unless Noted Otherwise)
	Existing Sanitary Sewer Manhole
	Proposed Sanitary Sewer Manhole
	Proposed Sanitary Sewer Cleanout
	Proposed Sanitary Sewer Flow
	Zero to Marginal Basement Service

**BENCHMARK:**  
CHISELED SQUARE ON TOP OF CATCH BASIN, 43.5' N. & 20.4' W. OF THE NORTHWEST CORNER OF LOT 24, BLOCK B, VASSAR ADDITION.  
ELEV. = 1260.00 NAVD88

**BENCHMARK:**  
CHISELED CROSS ON TOP OF CATCH BASIN, 48.2' N. & 41.2' W. OF THE NORTHEAST CORNER OF LOT 37, BLOCK B, VASSAR ADDITION.  
ELEV. = 1258.91 NAVD88

**BENCHMARK:**  
CHISELED CROSS ON WALK, MOST EASTERLY CORNER, (BLOCK CORNER), LOT 4, BLOCK D, CLIFTON COVE ADDITION, 35.2' W. & 8.5' S. OF THE NORTHWEST CORNER, LOT 20, BLOCK B, VASSAR ADDITION.  
ELEV. = 1259.07 NAVD88

NOTE: FEMA Floodplain Boundaries are scaled per location per the FEMA FIRM Panel 508 of 690, for Sedgwick County, Kansas, Map Number 2017300508C.

- = #4 REBAR W/ "BAUGHMAN" CAP (SET)
- = #4 REBAR W/ "BAUGHMAN" CAP (FOUND)
- = #4 REBAR W/ "1.5" 780" CAP (FOUND)
- = #4 REBAR W/ "BAUGHMAN" CAP OVER 4"x6" STONE (FOUND)
- ⊗ = 1" IRON OVER 11"x12" STONE (FOUND)
- = 1/2" IRON OVER 3"x6" STONE (FOUND)
- = #5 REBAR W/ "SRB" CAP (FOUND)
- △ = STONE (FOUND)

WTR	WTR	WATER LINE	WTR	WTR
AT&T	AT&T	AT&T LINE	AT&T	AT&T
OHE	OHE	OVERHEAD ELECTRIC LINE	OHE	OHE
EXSS	EXSS	SANITARY SEWER	EXSS	EXSS
EXSS	EXSS	STORMWATER SEWER	EXSS	EXSS

- PP □ = Power Pole
- FH ● = Fire Hydrant
- SSMH ● = Stormwater Sewer Manhole
- HLP □ = High Line Pole
- SSMH ● = Sanitary Sewer Manhole



SEC. 27, T28S, R1E SEC. 26, T28S, R1E  
SEC. 34, T28S, R1E SEC. 35, T28S, R1E

**THE WELL ADDITION**  
August 24th, 2017

**Baughman Company, P.A.**  
315 Ellis St. Wichita, KS 67211 F 316-262-7271 F 316-262-0148  
ENGINEERING | SURVEYING | PLANNING | LANDSCAPE ARCHITECTURE

NOTE:  
A drainage plan has been developed for the plot and all drainage easements, rights-of-way, or reserves shall remain at established grades or as modified with the approval of the applicable City or County Engineer and unobstructed to allow for the conveyance of stormwater.