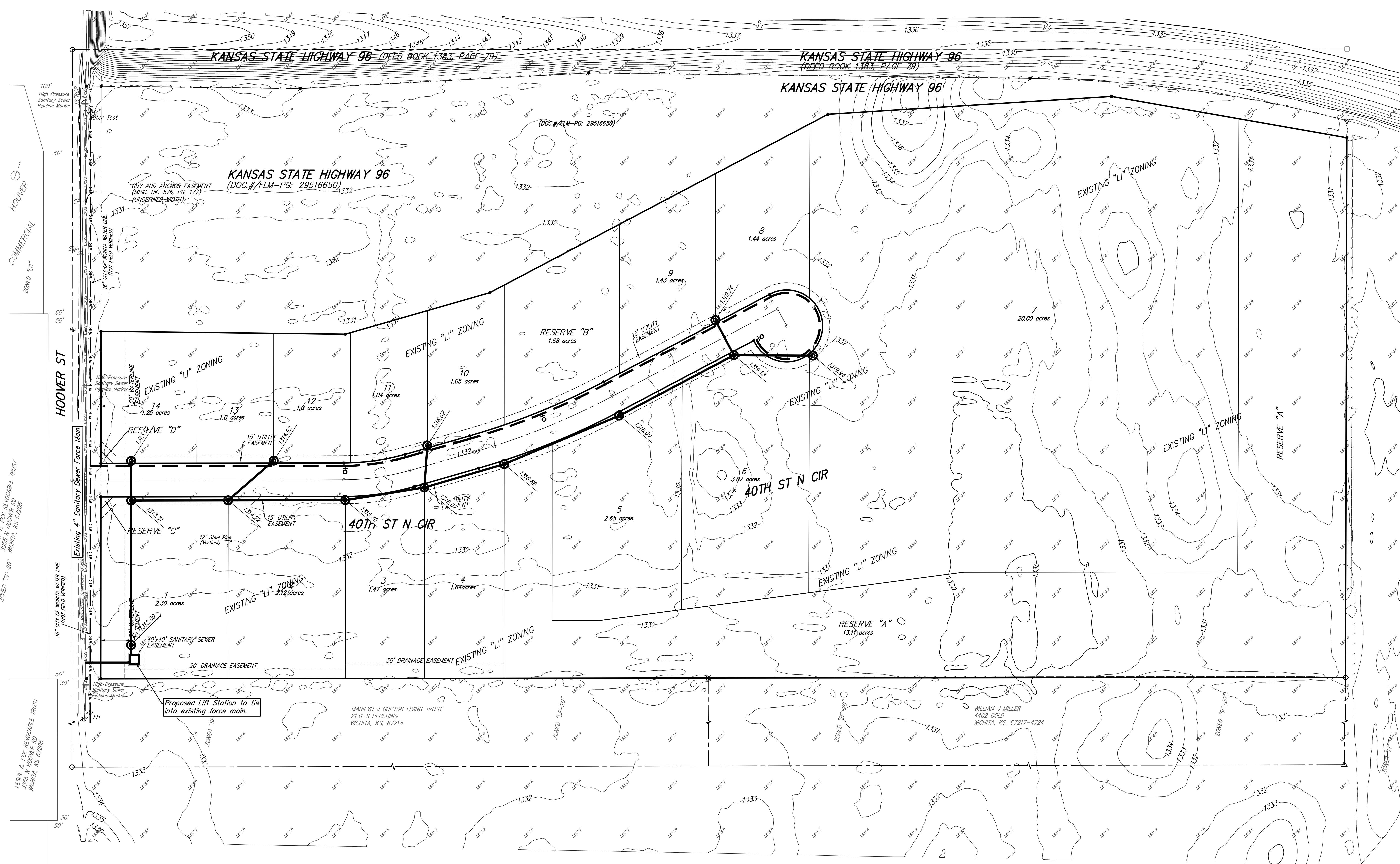
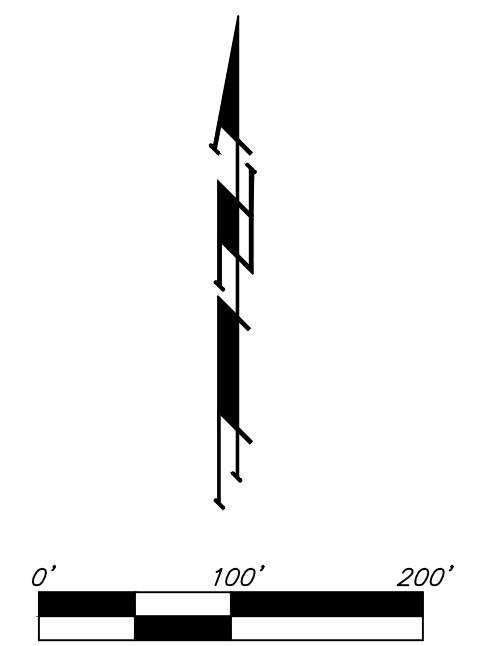


# UTILITY PLAN

## HOOVER INDUSTRIAL PARK 2ND ADDITION

### SEDGWICK COUNTY, KANSAS

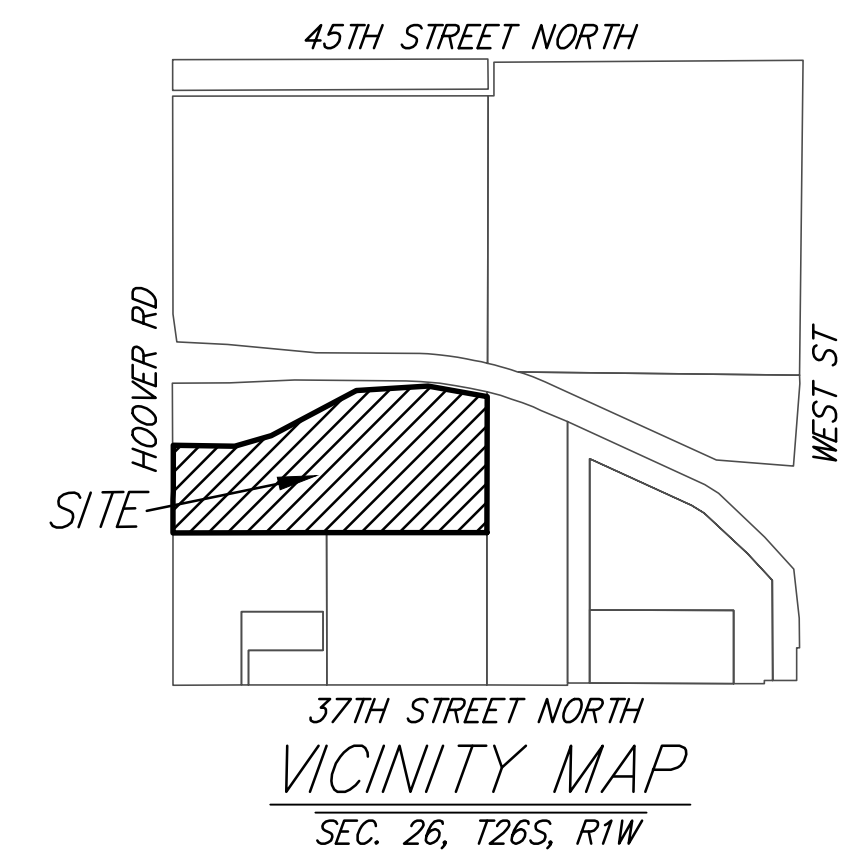


**LEGEND**

	Proposed Water Line (8" Unless Noted Otherwise)
	Existing Water Line (8" Unless Noted Otherwise)
	Proposed Fire Hydrant
	Existing Fire Hydrant
	Existing Fire Hydrant Removed
	Proposed Sanitary Sewer Line (8" Unless Noted Otherwise)
	Existing Sanitary Sewer Line (8" Unless Noted Otherwise)
	Existing Sanitary Sewer Manhole
	Proposed Sanitary Sewer Manhole
	Proposed Sanitary Sewer Cleanout
	Proposed Sanitary Sewer Flow
	Zero to Marginal Basement Service

	WATER LINE
	AT&T LINE
	GAS LINE
	CABLE, TV
	OVERHEAD ELECTRIC LINE
	SANITARY SEWER
	UNDERGROUND ELECTRIC LINE
	STORMWATER SEWER

FH ○ FH = Fire Hydrant  
 GP ○ GP = Guy Pole  
 GA = Guy Anchor  
 Sign □ Sign = Sign  
 WV ○ WV = Water Valve



**HOOVER INDUSTRIAL PARK 2ND ADDITION**  
 08/23/17

**Baughman Company, P.A.**  
 315 Ellis St. Wichita, KS 67211 P 316-262-7271 F 316-262-0149  
 ENGINEERING | SURVEYING | PLANNING | LANDSCAPE ARCHITECTURE