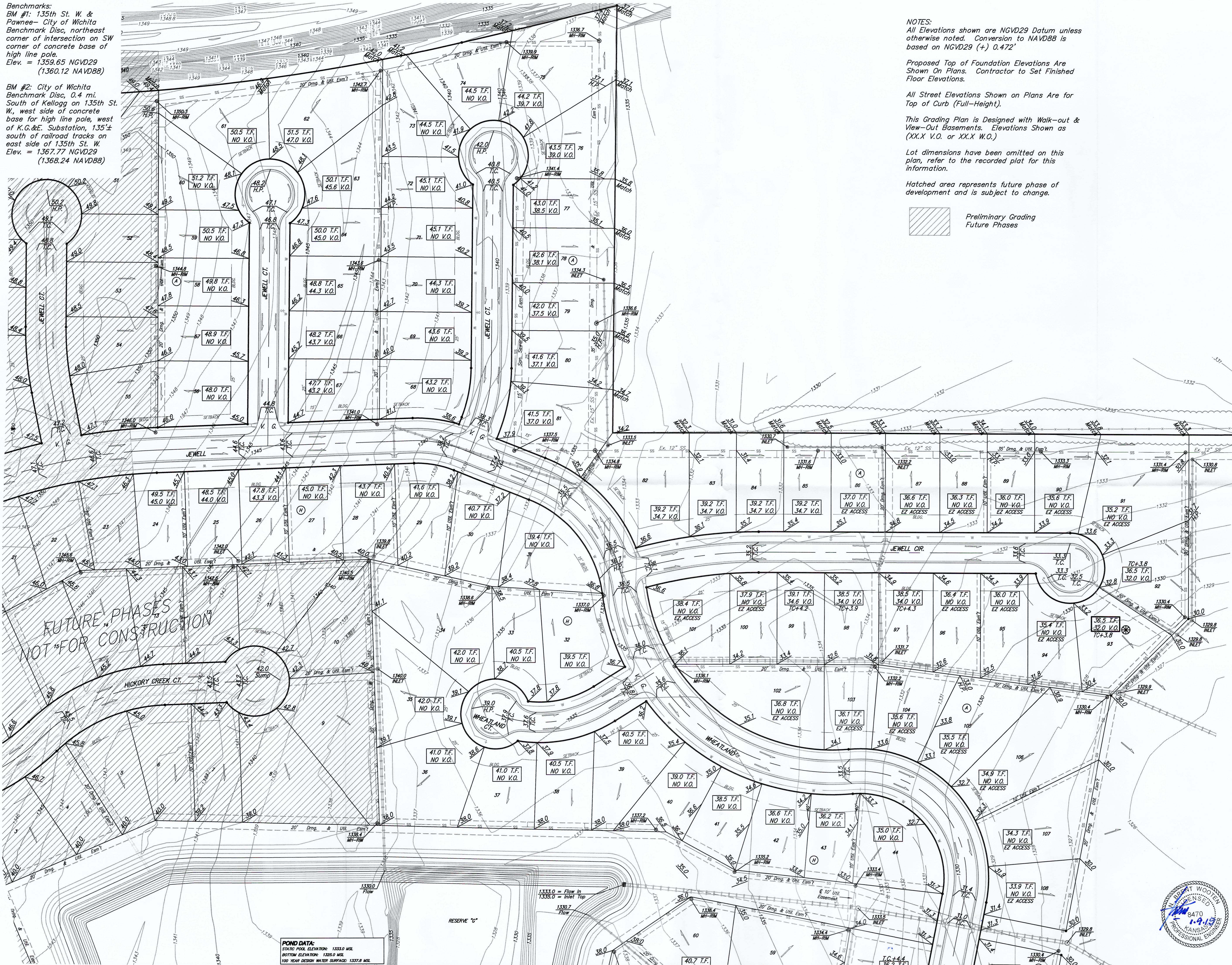


Benchmarks:  
 BM #1: 135th St. W. & Pawnee - City of Wichita Benchmark Disc, northeast corner of intersection on SW corner of concrete base of high line pole.  
 Elev. = 1359.65 NGVD29 (1360.12 NAVD88)

BM #2: City of Wichita Benchmark Disc, 0.4 mi. South of Kellogg on 135th St. W., west side of concrete base for high line pole, west of K.G.&E. Substation, 135'± south of railroad tracks on east side of 135th St. W.  
 Elev. = 1367.77 NGVD29 (1368.24 NAVD88)



NOTES:  
 All Elevations shown are NGVD29 Datum unless otherwise noted. Conversion to NAVD88 is based on NGVD29 (+) 0.472'

Proposed Top of Foundation Elevations Are Shown On Plans. Contractor to Set Finished Floor Elevations.

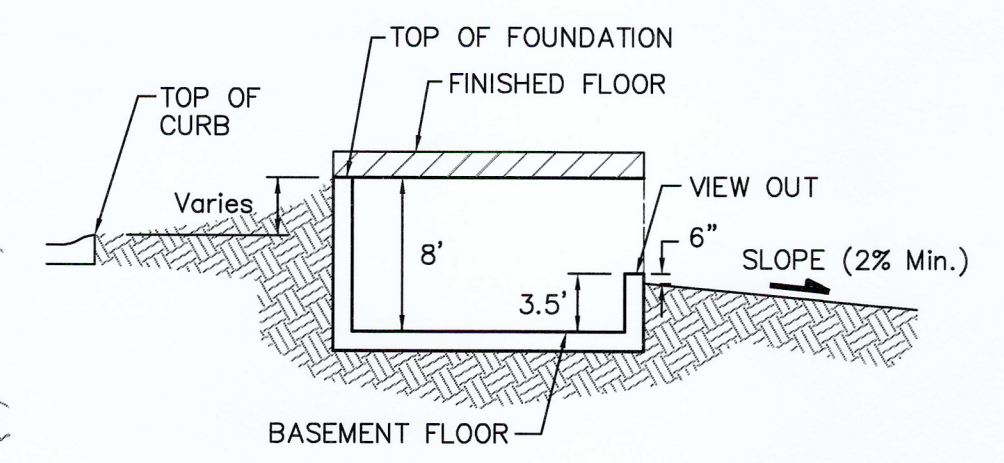
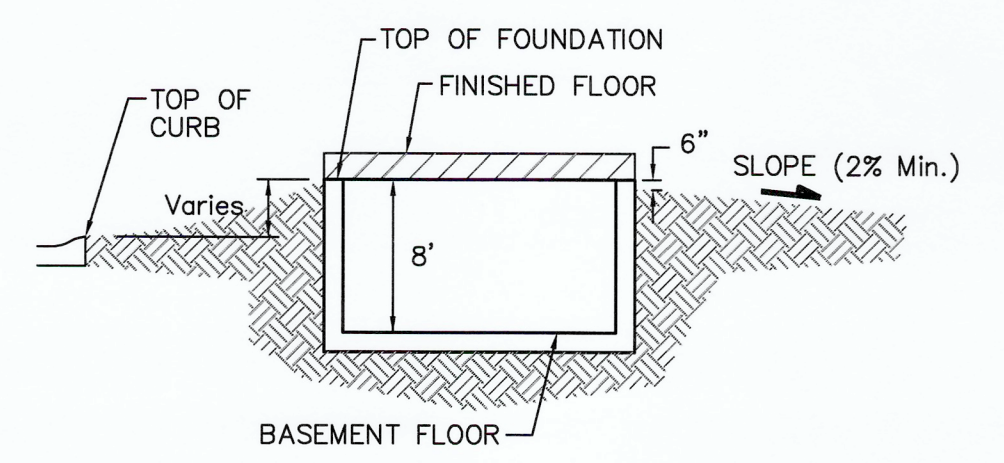
All Street Elevations Shown on Plans Are for Top of Curb (Full-Height).

This Grading Plan is Designed with Walk-out & View-Out Basements. Elevations Shown as (XX.X V.O. or XX.X W.O.)

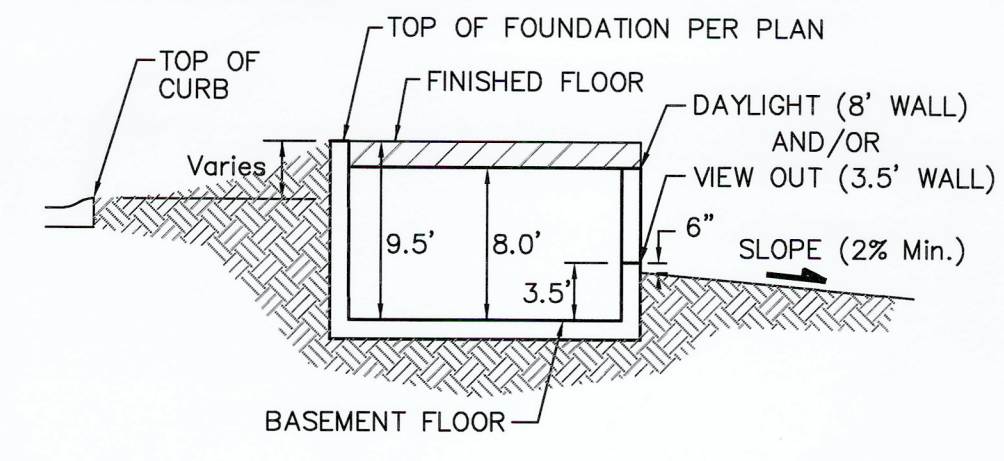
Lot dimensions have been omitted on this plan, refer to the recorded plat for this information.

Hatched area represents future phase of development and is subject to change.

Preliminary Grading Future Phases



Lots shown with "⊗" symbol indicates that extra deep foundations may be required.



Lots shown with "⊗" symbol indicates that extra deep foundations may be required.

2/1/2018 - Lot 86, Blk A, west lot line rear esmt grade raised to flatten rear yard slope per builder request - AEG

		Turkey Creek 3rd Addition Wichita, Kansas	
Baughman Company, P.A. 315 Ellis St. Wichita, KS 67211 F 316-262-7271 F 316-262-0149 ENGINEERING   SURVEYING   PLANNING   LANDSCAPE ARCHITECTURE			
PROJECT NUMBER	DESIGN	DRAWN	
6.20.11	NBW	JAK	
APPROVED	DATE		
	6/11		
REVISIONS:	JAK		
6.20.11	JAK		
9/07/18	JAK		
1-9-19	JAK		
SCALE		1" = 60'	
SHEET		2 OF 10	

E:\GRADE\Turkey Creek 3rd\grade.dwg