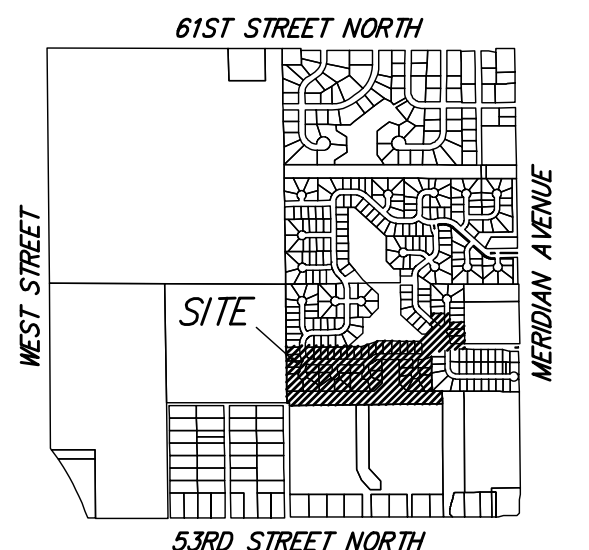
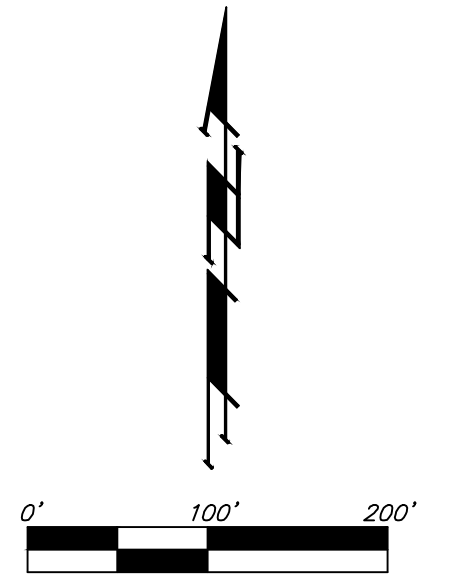


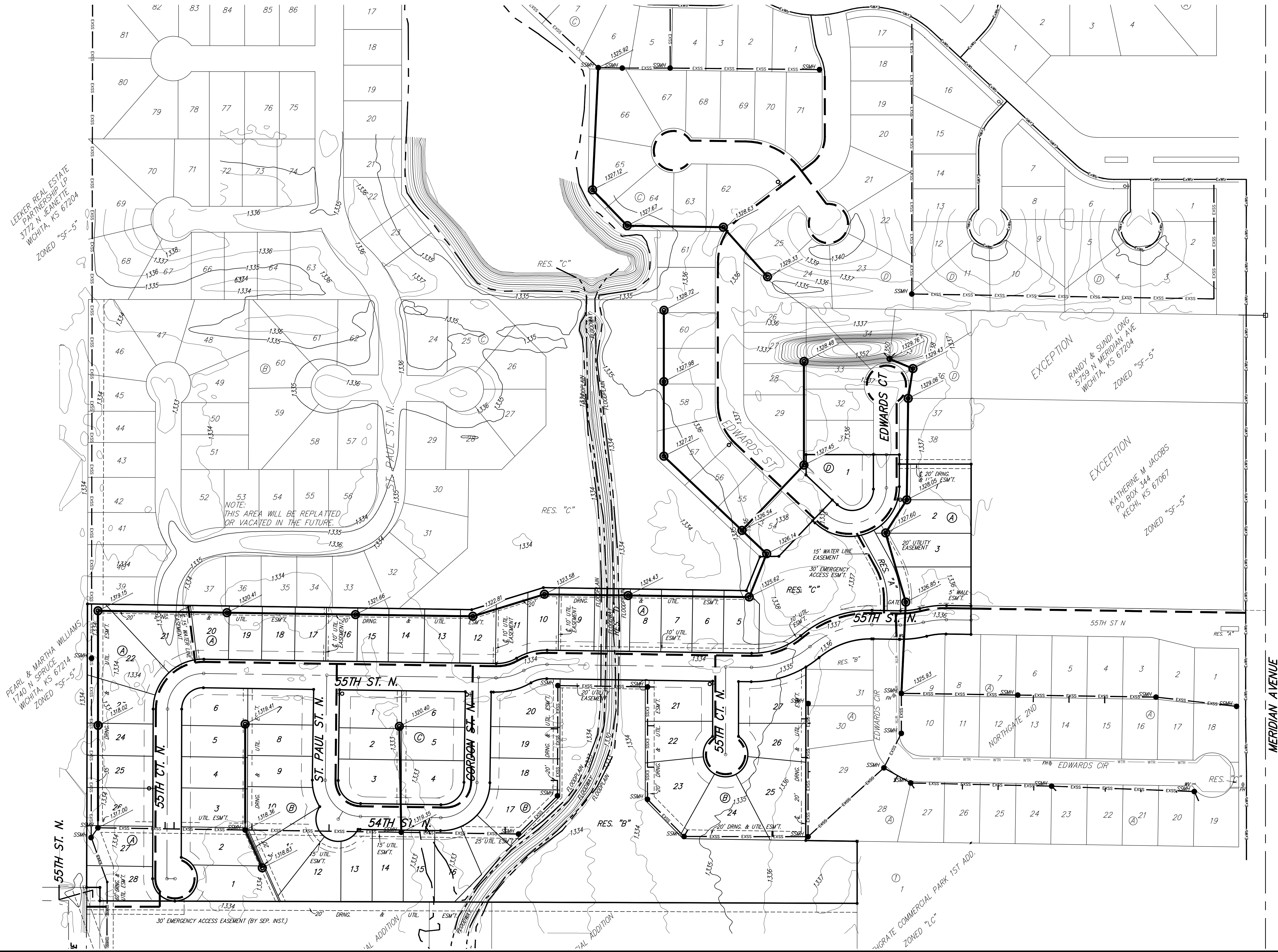
UTILITY CONCEPT  
**NORTHGATE 3RD ADDITION**  
 WICHITA, SEDGWICK COUNTY, KANSAS



VICINITY MAP  
 SEC. 13, T26S, R1W

**LEGEND**

- Proposed Water Line (8" Unless Noted Otherwise)
- Existing Water Line (8" Unless Noted Otherwise)
- Proposed Fire Hydrant
- Existing Fire Hydrant
- Proposed Sanitary Sewer Line (8" Unless Noted Otherwise)
- Existing Sanitary Sewer Line (8" Unless Noted Otherwise)
- Existing Sanitary Sewer Manhole
- Proposed Sanitary Sewer Manhole
- Proposed Sanitary Sewer Cleanout
- Proposed Sanitary Sewer Flow



LEEKER REAL ESTATE  
 PARTNERSHIP LP  
 3772 N JEANETTE  
 WICHITA, KS 67204  
 ZONED "SF-5"

EXCEPTION  
 RANDY & SUNDI LONG  
 5759 N MERIDIAN AVE  
 WICHITA, KS 67204  
 ZONED "SF-5"

EXCEPTION  
 KATHERINE M JACOBS  
 PO BOX 344  
 KECHI, KS 67067  
 ZONED "SF-5"

PEARL & MARTHA WILLIAMS,  
 1740 N SPRUCE  
 WICHITA, KS 67214  
 ZONED "SF-5"

**NORTHGATE 3RD ADDITION**

**Baughman Company, P.A.**  
 315 Ellis St. Wichita, KS 67211 P 316-262-7271 F 316-262-0149  
 ENGINEERING | SURVEYING | PLANNING | LANDSCAPE ARCHITECTURE  
 C:\Northgate 3rd\Northgate 3rd - NEW PLAT UC.dwg:RKR

14 August 2019