

PLOTTED: Monday, December 02, 2019 @ 04:21 PM

J:\PROJECTS\2016\16010221_PERFECTION_AUBURN_LAKES\1621_CAD\SSHS\505 CIVIL\ACPP\PH2\1621_COPR_P2.DWG

MODIFIED POND EAST BASIN A-EAST
 NP= 1326.5
 BFE= 1330.2



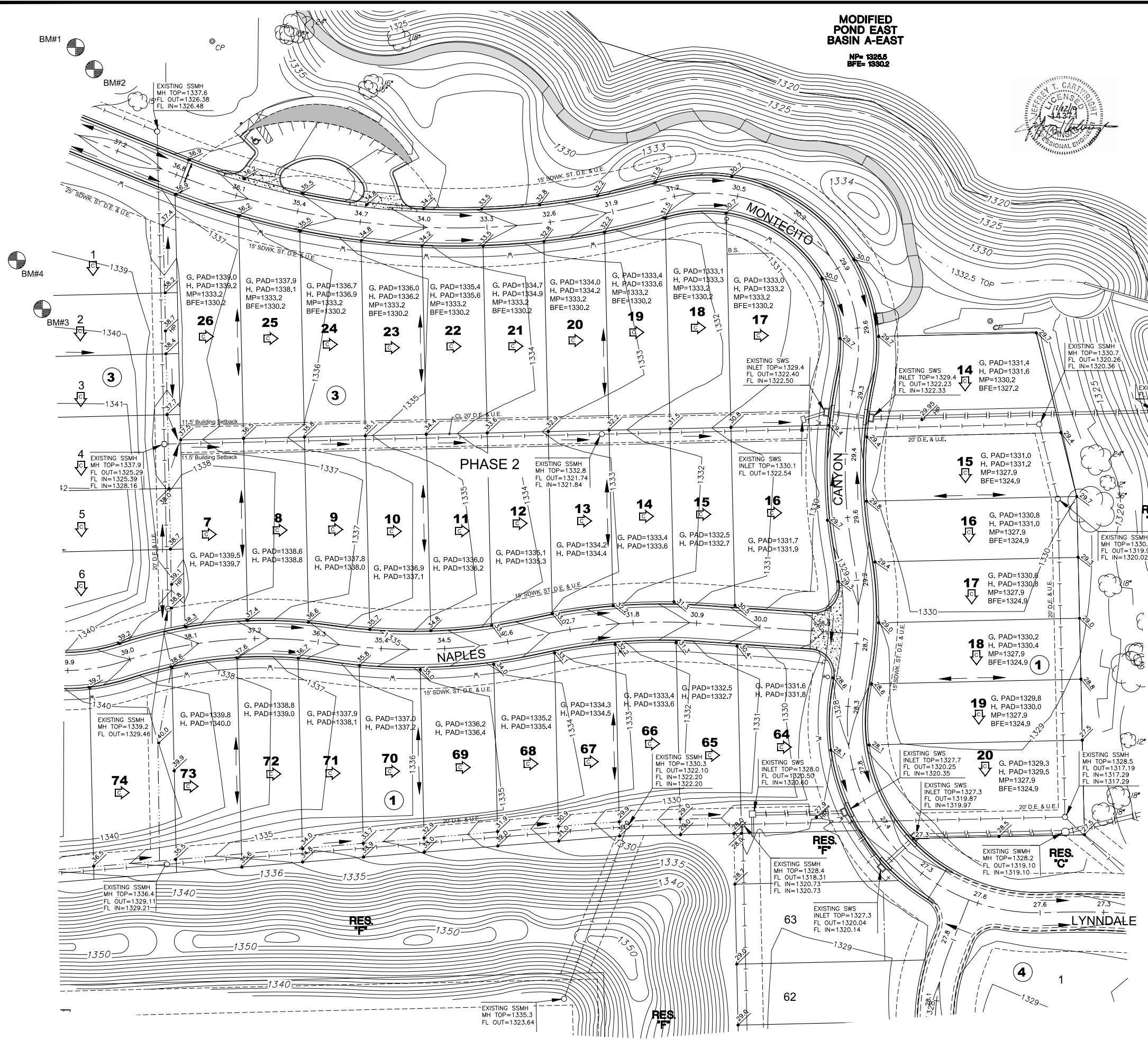
Table 7-2. Proposed Conditions for Modified Pond East for Proposed Basin A-East.

Basin Name	2-Yr	5-Yr	10-Yr	25-Yr	50-Yr	100-Yr
Flow In (cfs)	255	354	442	573	678	787
Flow Out (cfs)	222	313	395	514	616	738
Storage Vol. (ac-ft)	9.3	12.2	14.7	18.2	20.8	22.8
Water Sur. Elev. (ft)	1327.7	1328.3	1328.8	1329.4	1329.9	1330.2
Outlet Structure	20' Rectangular Weir at 1325.5', 55' Rectangular Weir at 1329.5'					

Table 9. Proposed Conditions for Lower Central Pond for Proposed Basin C

Basin Name	2-Yr	5-Yr	10-Yr	25-Yr	50-Yr	100-Yr
Flow In (cfs) *	-	-	-	-	-	-
Flow Out (cfs)	241	327	410	534	633	759
Storage Vol. (ac-ft)	2.7	3.3	4.0	4.8	5.5	6.3
Water Sur. Elev. (ft)	1322.8	1323.2	1323.6	1324.1	1324.4	1324.9
Outlet Structure	30' Rectangular Weir at 1321.0'					

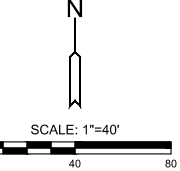
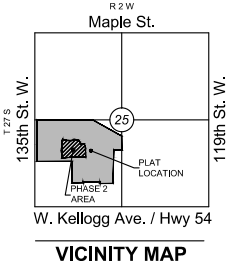
*No flow due to modeling as an interconnected pond



CENTRAL POND BASIN C
 NP= 1321.0
 100-Yr= 1324.9

MINIMUM PAD ELEVATIONS
 LOWEST OPENINGS

LOT(S)	BLOCK	ELEVATION	LOT(S)	BLOCK	ELEVATION
1	1	1342.5	41-43	1	1326.6
2	1	1339.5	44-47	1	1326.7
3-5	1	1337.2	48-52	1	1326.8
6-9	1	1333.2	53	1	1331.5
10	1	1328.0	89	1	1342.5
11	1	1326.5	1	2	1341.0
14	1	1330.2	15	2	1337.2
15-28	1	1327.9	1	3	1337.2
29	1	1327.5	17-26	3	1333.2
30	1	1327.0	1-16	4	1329.2
31-38	1	1326.6			



REVISION HISTORY

DATE	REVISION	REASON

LEGEND

- IN - CONIFEROUS TREE & DIAMETER
- DN - DECIDUOUS TREE & DIAMETER
- SN - SIGN
- B - BUSH
- ET - EDGE OF TREES
- F - FENCE
- SMH - SANITARY SEWER MANHOLE
- GM - GAS METER
- PP - POLE POLE
- HLP - HIGH LINE POLE
- G - GATE
- W - WALL
- LP - LIGHT POLE
- FH - FIRE HYDRANT
- WV - WATER VALVE
- WM - WATER METER
- PK - POWER POLE AND GUY ANCHOR
- TR - TELEPHONE RISER
- INLET
- STORM SEWER PIPE
- WATER LINE
- SANITARY SEWER LINE
- GAS LINE
- TELEPHONE LINE
- PROP. CONTOURS
- EXIST. CONTOURS
- UNDERGROUND ELECTRIC LINE
- OVERHEAD TELEPHONE
- OVERHEAD ELECTRIC
- UNDERGROUND FIBER OPTIC CABLE
- SECTION CORNER
- PROPERTY CORNER FOUND
- BENCHMARK
- WALKOUT
- VIEWOUT
- TERRACED VIEWOUT
- TERRACED WALKOUT
- SPOT ELEV. (ADD 1300 TO NAVD88 DATUM)
- PROP. HOUSE ELEV.
- MINIMUM PAD
- BASEMENT FLOOR
- TOP OF FOUNDATION
- GARAGE PAD
- HOUSE PAD
- DIRECTION OF PATIO/COURTYARD
- DIRECTION OF FLOW

NOTES:
 VERTICAL DATUM USED IS NAVD88.
 ALL STREET GRADES SHOWN ARE TO TOP OF PAVEMENT.



FOUR CORNER GRADING PLAN FOR
AUBURN LAKES ADDITION
 PHASE 2

©2019 MKEC Engineering
 All Rights Reserved
 www.mkec.com
 These drawings and their contents, including, but not limited to, all concepts, designs, & ideas are the exclusive property of MKEC Engineering (MKEC), and may not be used or reproduced in any way without the express consent of MKEC.

FOUR CORNER GRADING PLAN
 PHASE 2

PROJECT NO.	1601010221	
DATE	DECEMBER 2019	
SCALE	1"=40'	
DESIGNED	JTC	
DRAWN	ABW	
CHECKED	KLA	
NO.	REVISION	DATE
SHEET NO.		
01 OF 01		