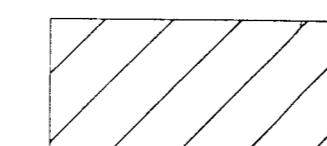
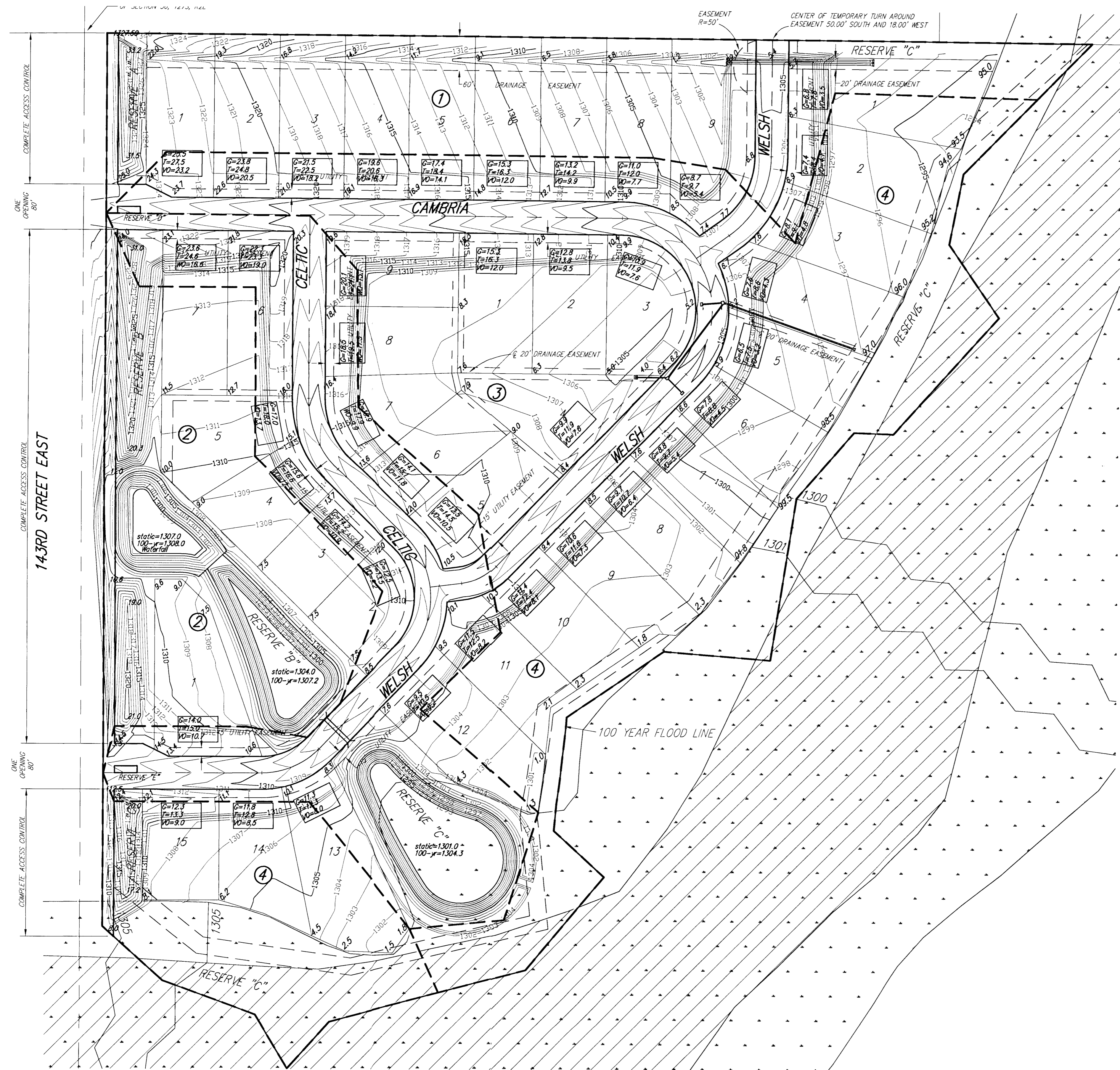


GRADING PLAN FOR CAMBRIA ADDITION WICHITA, SEDGWICK COUNTY, KANSAS



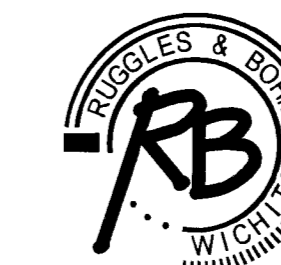
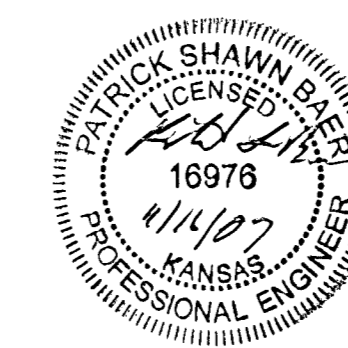
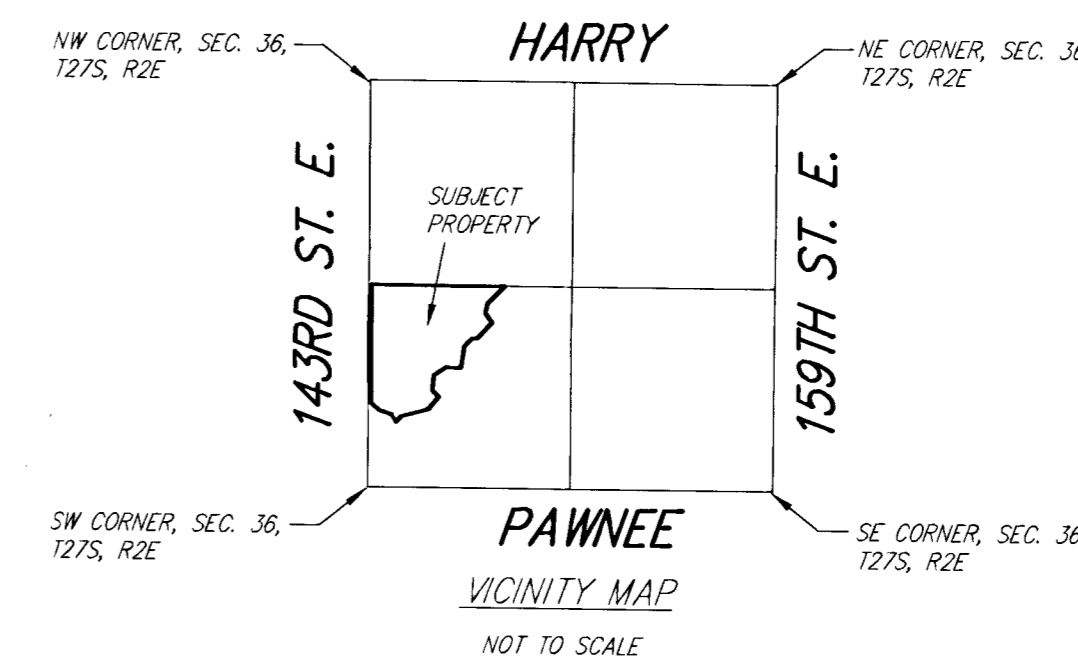
FLOODWAY AREA



FLOODPLAIN AREA

BENCH MARK: R.R. SPIKE 32.39' E & 40.87' N. OF THE CENTERLINE INTERSECTION PAWNEE AVENUE & 127TH STREET EAST
ELEV.=1348.62 (NGVD) = 161.22 (CITY DATUM)

BENCH MARK: SRB BRASS DISC 1008.17' E. & 55.63' N. OF THE CENTERLINE INTERSECTION PAWNEE AVENUE & 127TH STREET EAST
ELEV.=1436.63 (NGVD) = 149.23 (CITY DATUM)



Ruggles & Bohm, P.A.
Engineering, Surveying, Land Planning
924 North Main
Wichita, Kansas 67203
www.rbkansas.com
(316) 264-8008
(316) 264-4621 fax
E-mail: info@rbkansas.com