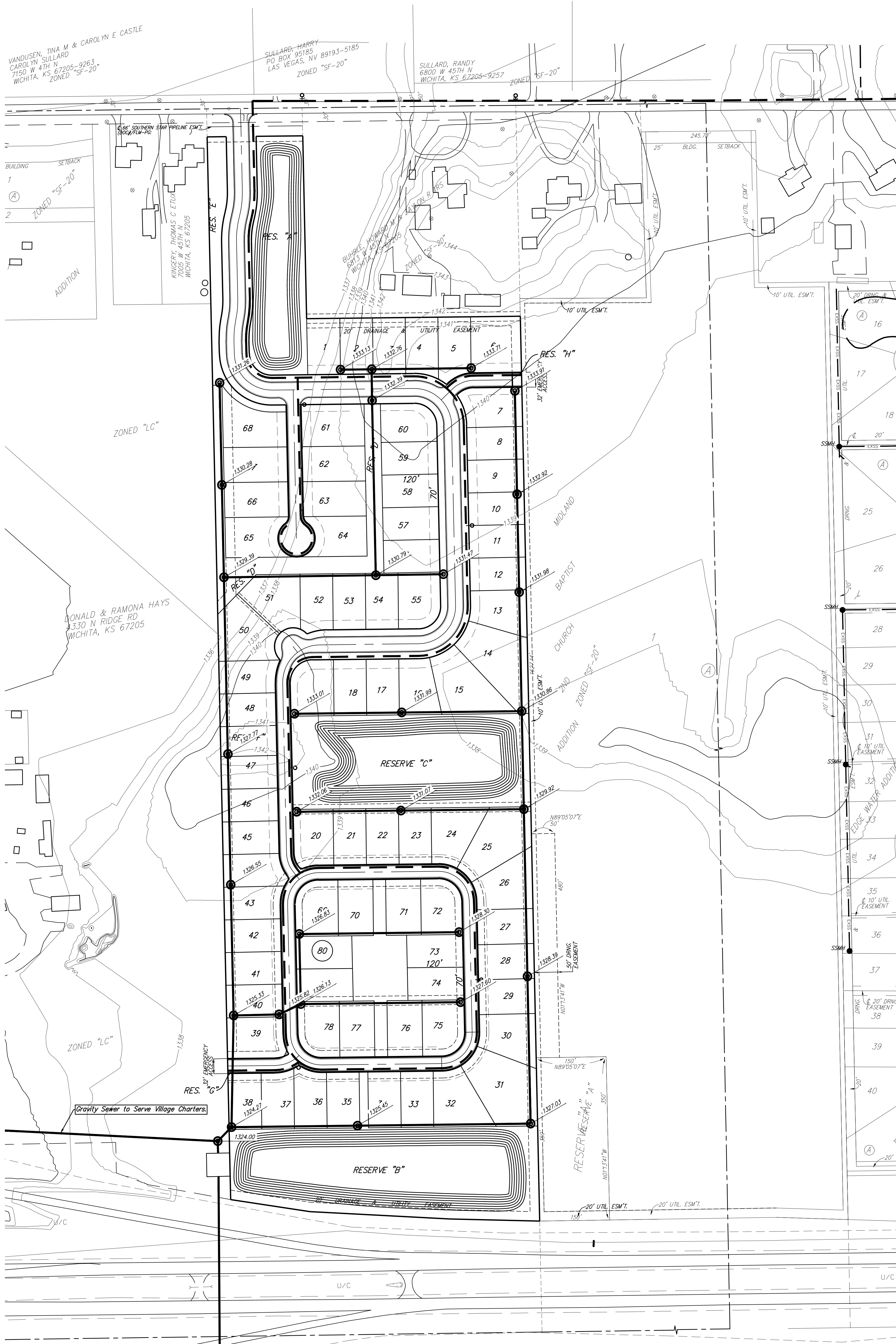


# UTILITY CONCEPT

## NORTH FORTY-FIFTH ADDITION WICHITA, SEDGWICK COUNTY, KANSAS



VANDUSEN, TINA M & CAROLYN E CASTLE  
CAROLYN SULLARD  
7150 W 4TH N  
WICHITA, KS 67205-9263  
ZONED "SF-20"

SULLARD, HARRY  
PO BOX 95185  
LAS VEGAS, NV 89193-5185  
ZONED "SF-20"

SULLARD, RANDY  
6800 W 45TH N  
WICHITA, KS 67205-9257  
ZONED "SF-20"

BUILDING SETBACK  
1  
2  
ZONED "SF-20"  
ADDITION

0.66' SOUTHERN STAR PIPELINE ESMT.  
KINGERY, THOMAS C ETUX  
7005 W 42ND ST  
WICHITA, KS 67205

BUJWEL, HOWARD W  
8013 W 45TH N  
WICHITA, KS 67205  
ZONED "SF-20"

DONALD & RAMONA HAYS  
1330 N RIDGE RD  
WICHITA, KS 67205

ZONED "LC"

Gravity Sewer to Serve Village Charters.

### LEGEND

- Proposed Water Line (8" Unless Noted Otherwise)
- Existing Water Line (8" Unless Noted Otherwise)
- Proposed Fire Hydrant
- Proposed Sanitary Sewer Line (8" Unless Noted Otherwise)
- Existing Sanitary Sewer Line (8" Unless Noted Otherwise)
- Existing Sanitary Sewer Manhole
- Proposed Sanitary Sewer Manhole
- Proposed Sanitary Sewer Flow

### NORTH FORTY-FIFTH ADDITION

4 NOVEMBER, 2019

**Baughman Company, P.A.**  
315 Ellis St. Wichita, KS 67211 P 316-262-7271 F 316-262-0149  
ENGINEERING | SURVEYING | PLANNING | LANDSCAPE ARCHITECTURE

