

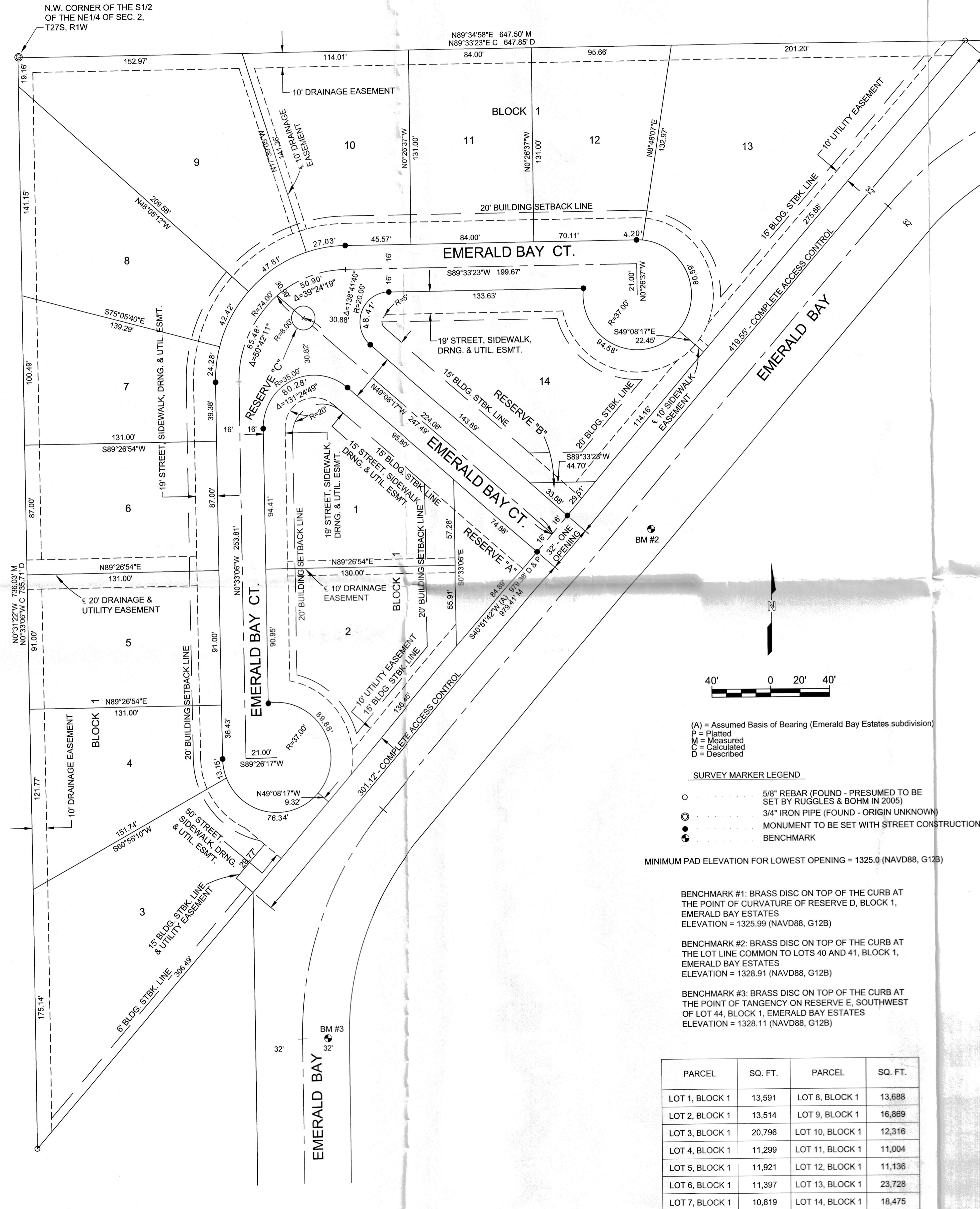
REVISED COPY

FINAL TRACING REC'D 5-02-19

CITY HALL - ENGINEERING  
MAIL STOP 1-71  
Arceli Rosas  
FOR YOUR FILES

# EMERALD BAY ESTATES 5TH ADDITION

Wichita, Sedgwick County, Kansas



(A) = Assumed Basis of Bearing (Emerald Bay Estates subdivision)  
 P = Platted  
 M = Measured  
 C = Calculated  
 D = Described

**SURVEY MARKER LEGEND**

- 5/8" REBAR (FOUND - PRESUMED TO BE SET BY RUGGLES & BOHM IN 2005)
- 3/4" IRON PIPE (FOUND - ORIGIN UNKNOWN)
- MONUMENT TO BE SET WITH STREET CONSTRUCTION PROJECT
- BENCHMARK

MINIMUM PAD ELEVATION FOR LOWEST OPENING = 1325.0 (NAVD88, G12B)

BENCHMARK #1: BRASS DISC ON TOP OF THE CURB AT THE POINT OF CURVATURE OF RESERVE D, BLOCK 1, EMERALD BAY ESTATES  
 ELEVATION = 1325.99 (NAVD88, G12B)

BENCHMARK #2: BRASS DISC ON TOP OF THE CURB AT THE LOT LINE COMMON TO LOTS 40 AND 41, BLOCK 1, EMERALD BAY ESTATES  
 ELEVATION = 1328.91 (NAVD88, G12B)

BENCHMARK #3: BRASS DISC ON TOP OF THE CURB AT THE POINT OF TANGENCY ON RESERVE E, SOUTHWEST OF LOT 44, BLOCK 1, EMERALD BAY ESTATES  
 ELEVATION = 1328.11 (NAVD88, G12B)

PARCEL	SQ. FT.	PARCEL	SQ. FT.
LOT 1, BLOCK 1	13,591	LOT 8, BLOCK 1	13,888
LOT 2, BLOCK 1	13,514	LOT 9, BLOCK 1	16,869
LOT 3, BLOCK 1	20,796	LOT 10, BLOCK 1	12,316
LOT 4, BLOCK 1	11,299	LOT 11, BLOCK 1	11,004
LOT 5, BLOCK 1	11,921	LOT 12, BLOCK 1	11,136
LOT 6, BLOCK 1	11,397	LOT 13, BLOCK 1	23,728
LOT 7, BLOCK 1	10,819	LOT 14, BLOCK 1	18,475

State of Kansas)  
SS  
Sedgwick County)

We, Garver, LLC, Land Surveyors in aforesaid county and state, do hereby certify that, under the supervision of the undersigned, we have surveyed and platted "EMERALD BAY ESTATES 5TH ADDITION", Wichita, Sedgwick County, Kansas, and that the accompanying plat is a true and correct exhibit of the property surveyed, described as follows:

That part of the South Half of the Northeast Quarter of Section 2, Township 27 South, Range 1 West of the 6th P.M., Sedgwick County, Kansas described as beginning at the N.W. corner thereof; thence east along the north line of said South Half, 647.85 feet; thence southwesterly 979.38 feet to a point on the west line of said South Half, said point being 735.71 feet south of the place of beginning; thence north along said west line to the place of beginning.

All public easements and dedications are hereby vacated by virtue of K.S.A. 12-512b, as amended.

Garver, LLC  
Land Surveyor  
William K. Clevenger, PS #1437

State of Kansas)  
SS  
Sedgwick County)

The foregoing instrument acknowledged before me this \_\_\_ day of \_\_\_, 2019, by \_\_\_, Commercial Banker, on behalf of Emprise Bank, Notary Public

My appointment expires \_\_\_\_\_.

This plat of "EMERALD BAY ESTATES 5TH ADDITION", Wichita, Sedgwick County, Kansas, has been submitted to and approved by the Wichita-Sedgwick County Metropolitan Area Planning Commission, Wichita, Kansas.

Dated this \_\_\_ day of \_\_\_, 2019.

Wichita-Sedgwick County Metropolitan Area Planning Commission  
\_\_\_\_\_  
Chair  
Cindy Miles  
\_\_\_\_\_  
Secretary  
Dale Miller

This plat approved and all dedications shown hereon accepted by the City Council of the City of Wichita, Kansas, this \_\_\_ day of \_\_\_, 2019.

At the Direction of the City Council  
\_\_\_\_\_  
Mayor  
Jeff Longwell  
\_\_\_\_\_  
City Clerk  
Karen Sublett

Reviewed in accordance with K.S.A. 58-2005 on this \_\_\_ day of \_\_\_, 2019.

Deputy County Surveyor  
Sedgwick County Kansas  
Tricia L. Robello, PS #1246

Entered on transfer record this \_\_\_ day of \_\_\_, 2019.  
\_\_\_\_\_  
County Clerk  
Kelly B. Arnold

State of Kansas)  
SS  
Sedgwick County)

This is to certify that this plat has been filed for record in the office of the Register of

Deeds, this \_\_\_ day of \_\_\_, 2019, at \_\_\_ o'clock \_\_\_ M, and is duly recorded.

\_\_\_\_\_  
Register of Deeds  
Tonya Buckingham  
\_\_\_\_\_  
Deputy  
Kenly Zehring

State of Kansas)  
SS  
Sedgwick County)

The foregoing instrument acknowledged before me, this \_\_\_ day of 2019, by Gaylan W. Nett, Jr., President, on behalf of SNAR, LLC.

SNAR, LLC  
President  
Gaylan W. Nett, Jr.

Notary Public

My appointment expires \_\_\_\_\_.

We the undersigned, holders of a mortgage on a portion of the above described property, do hereby consent to this plat of "EMERALD BAY ESTATES 5TH ADDITION", Wichita, Sedgwick County, Kansas.

Emprise Bank  
Commercial Banker

DWG FILE: EMERALD BAY 5TH  
SURVEY BASE  
PROJECT NO. 18266001  
APRIL 17, 2019

