

# HANGING ROCK RANCH

an Addition to  
Sedgwick County, Kansas.

State of Kansas) SS  
Sedgwick County)

This plat of "HANGING ROCK RANCH", an Addition to Sedgwick County, Kansas has been submitted to and approved by the Wichita-Sedgwick County Metropolitan Area Planning Commission, Wichita, Kansas.  
Dated this \_\_\_\_\_ day of \_\_\_\_\_, 2019.

We, Savoy Company, P.A., Surveyors in aforesaid county and state do hereby certify that, under the supervision of the undersigned, we have surveyed and platted "HANGING ROCK RANCH", an Addition to Sedgwick County, Kansas and that the accompanying plat is a true and correct exhibit of the property surveyed, described as follows:

Wichita-Sedgwick County Metropolitan Area Planning Commission

The South half of the East half of the Southeast Quarter of the Southeast Quarter of Section 24, Township 26 South, Range 2 East of the 6th P.M., Sedgwick County, Kansas.

\_\_\_\_\_ Chair  
Cindy Miles

All Public easements and dedications being vacated by virtue of K.S.A. 12-512b as amended.

\_\_\_\_\_ Secretary  
Dale Miller

Savoy Company, P.A.

This plat approved and all dedications shown hereon, are hereby accepted by the Board of County Commissioners, Sedgwick County, Kansas, this \_\_\_\_\_ day of \_\_\_\_\_, 2019.

Date: \_\_\_\_\_  
Mark A. Savoy PS #788  
Surveyor

\_\_\_\_\_ Chairman  
David T. Dennis, Third District

\_\_\_\_\_ County Clerk  
Kelly B. Arnold

Know all men by these presents that we, the undersigned, have caused the land described in the surveyors certificate to be platted into a Lots, Block and Streets to be known as "HANGING ROCK RANCH", an Addition to Sedgwick County, Kansas. The streets are hereby dedicated to and for the use of the public. The drainage and utility easements are hereby granted for construction and maintenance of all public utilities and for drainage purposes. Access Controls are hereby granted as indicated on the face of the plat.

Reviewed in accordance with K.S.A. 58-2005 on this \_\_\_\_\_ day of \_\_\_\_\_, 2019.

Hanging Rock Inc., a Kansas corporation

Deputy County Surveyor  
Sedgwick County, Kansas  
Tricia L. Robella, PS #1246

Timothy G. Pierce  
President

State of Kansas) SS  
Sedgwick County)

Entered on transfer record this \_\_\_\_\_ day of \_\_\_\_\_, 2019.

The foregoing instrument acknowledged before me, this \_\_\_\_\_ day of \_\_\_\_\_, 2019, by Timothy G. Pierce, President of Hanging Rock Inc., a Kansas corporation, on behalf of the corporation.

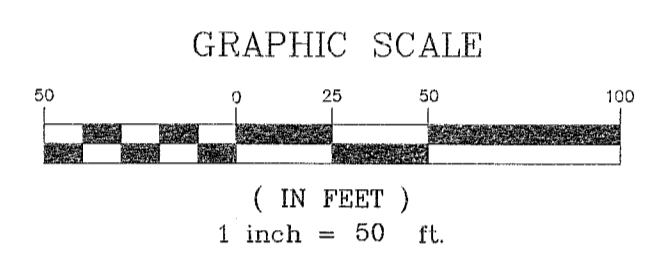
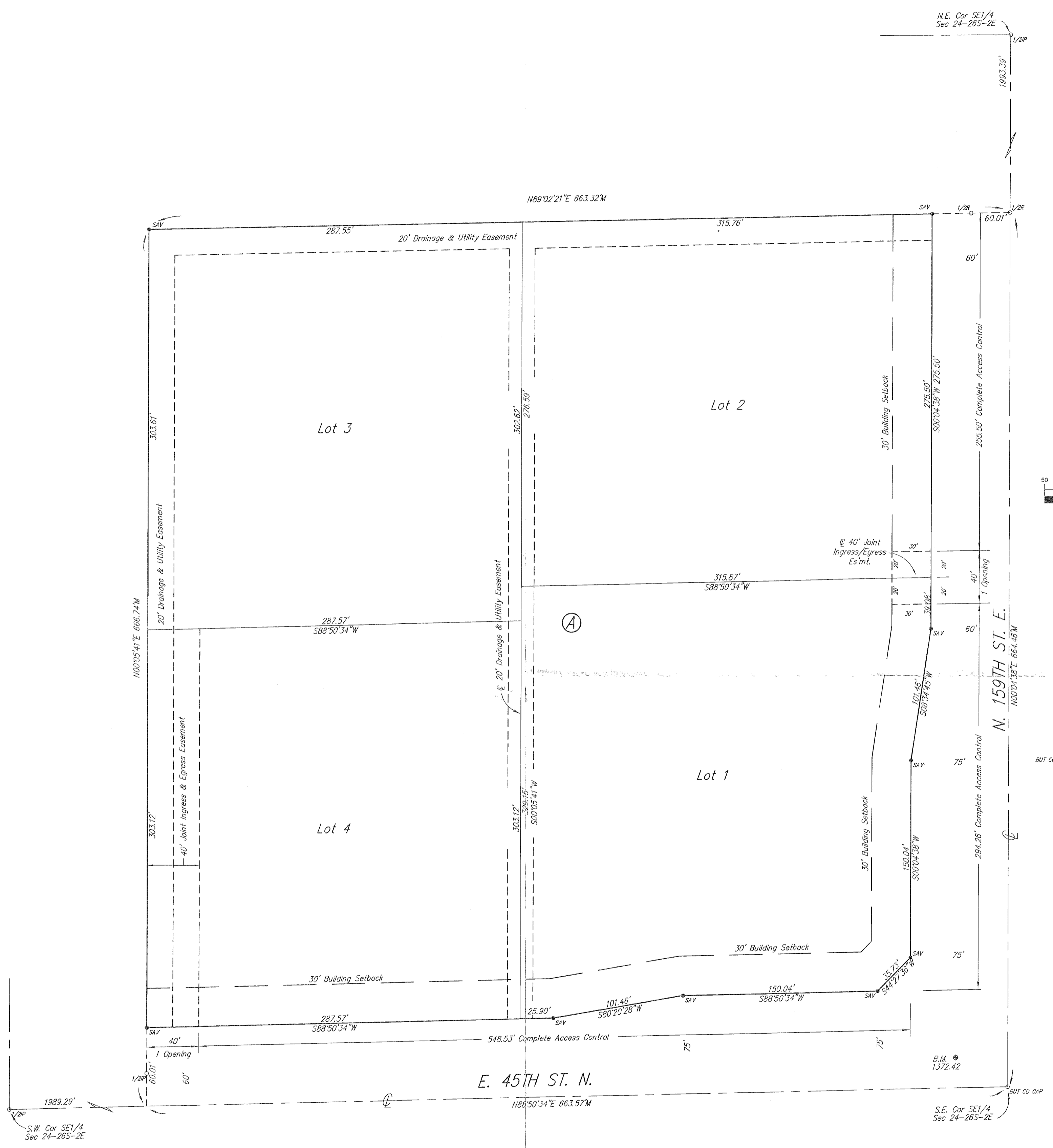
\_\_\_\_\_ County Clerk  
Kelly B. Arnold

My App't. Exp \_\_\_\_\_  
Notary Public

State of Kansas) SS  
Sedgwick County)  
This is to certify that this plat has been filed for record in the office of the Register of Deeds, this \_\_\_\_\_ day of \_\_\_\_\_, 2019, at \_\_\_\_\_ o'clock \_\_\_\_\_ M.: and is duly recorded.

\_\_\_\_\_ Register of Deeds  
Tonya Buckingham

\_\_\_\_\_ Deputy  
Kenly Zehring



Benchmark: 24" Rebar w/Savoy Drainage Cap  
76.1' S. & 34.9' E. of the Easterly most S.E. Cor.  
of Lot 1, Block A, Hanging Rock Ranch Add.  
Elevation = 1372.42 NAVD88

- Survey Marker Legend
- 1/2" = 1/2" Iron Pipe (Found - Origin Unknown)
  - 1/2" = 1/2" Rebar (Found - Origin Unknown)
  - BUT TO CAP = 1/2" Rebar w/Butler Co. Cap (Found)
  - SAV = 1/2" Rebar w/Savoy Cap (Set)