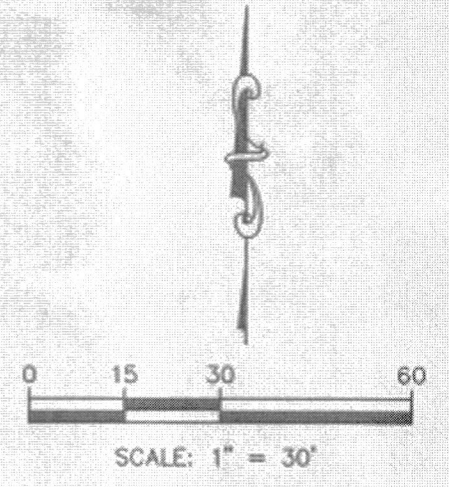
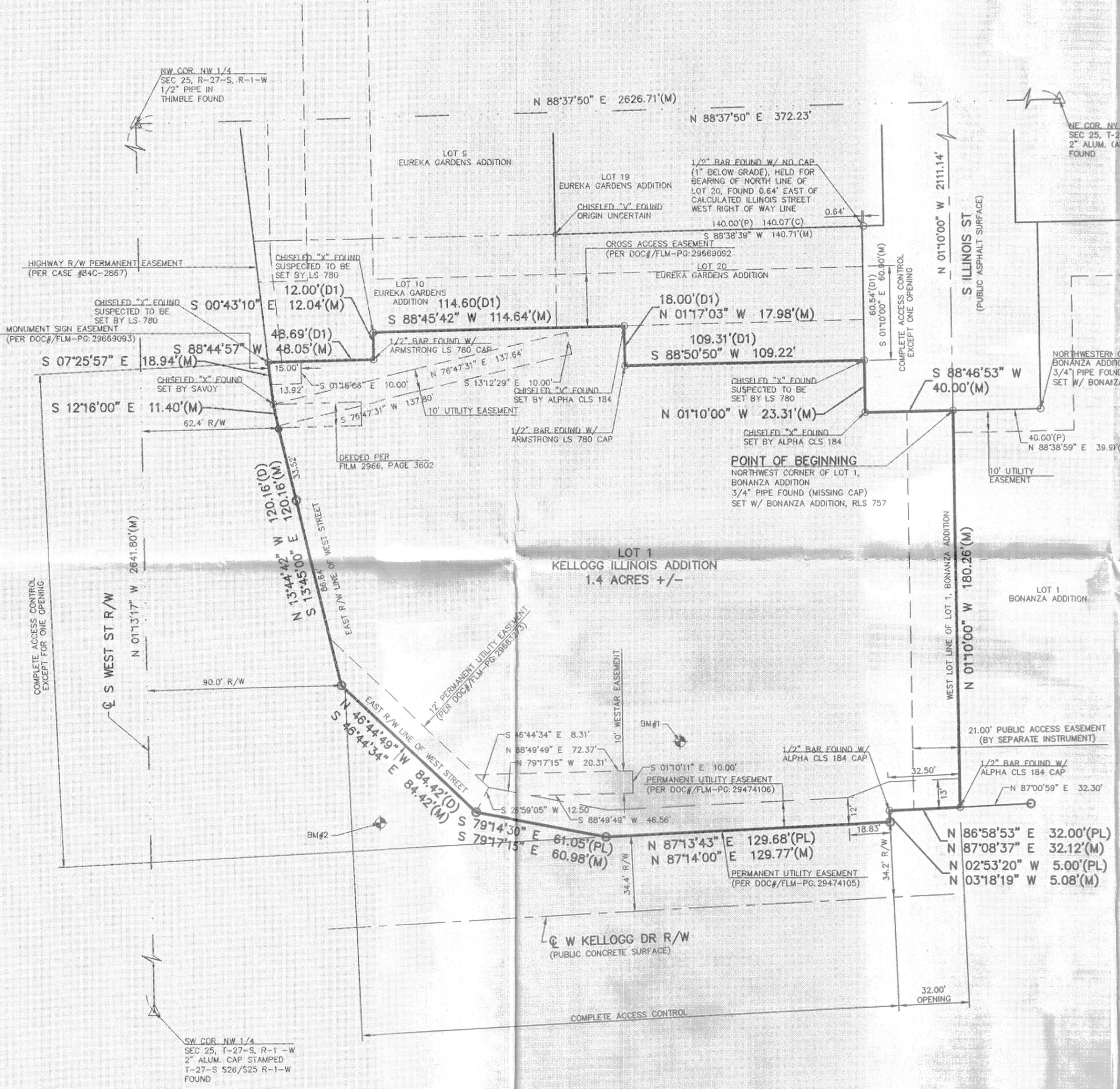
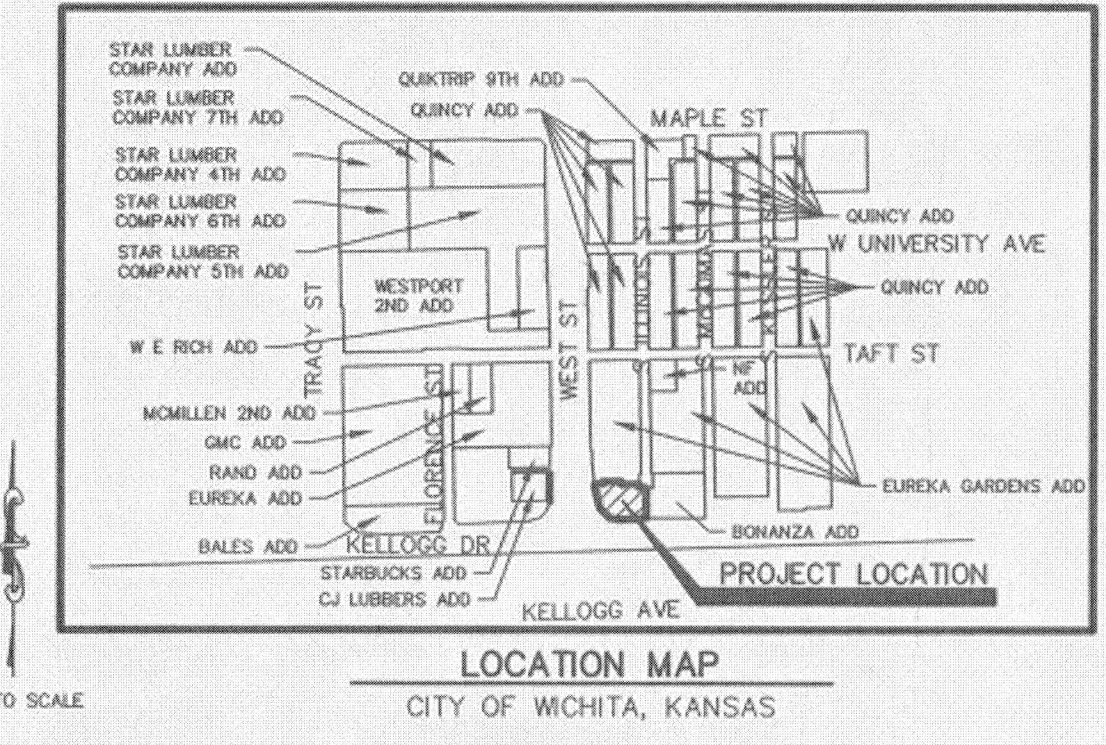


FINAL TRACING REC'D 1-25-19

REVISED COPY

# KELLOGG ILLINOIS ADDITION

WICHITA, SEDGWICK COUNTY, KANSAS  
A PORTION OF NW 1/4 SEC. 25, TOWNSHIP 27 SOUTH, RANGE 1 WEST  
WICHITA, SEDGWICK COUNTY, KANSAS



- LEGEND**
- △ SECTION CORNER FOUND
  - MONUMENT FOUND
  - 5/8" REBAR W/ ALUM. KDOT RIGHT OF WAY CAP FOUND
  - 1/2" X 24" REBAR W/ KVE CLS 20 CAP SET
  - (P) PLATTED
  - (PL) BEARING & DISTANCE PER KDOT PLAN 235-87 KA-0161-04
  - (D) DESCRIBED PER FILM 2968, PAGE 3273
  - (D1) DESCRIBED PER FILM 2967, PAGE 5223
  - (C) CALCULATED
  - (M) MEASURED
  - LINE NOT DRAWN TO SCALE

### OWNER'S CERTIFICATE

STATE OF KANSAS }  
COUNTY OF SEDGWICK } SS

KNOW ALL MEN BY THESE PRESENTS THAT WE, THE UNDERSIGNED, HAVE CAUSED THE LAND DESCRIBED IN THE SURVEYOR'S CERTIFICATE TO BE PLATTED INTO A LOT AND BLOCK AND TO BE KNOWN AS "KELLOGG ILLINOIS ADDITION," WICHITA, SEDGWICK COUNTY, KANSAS.

NO SIGNS, LIGHT POLES, PRIVATE DRAINAGE SYSTEMS, MASONRY FENCES, MASONRY TRASH ENCLOSURES OR OTHER STRUCTURES SHALL BE LOCATED WITHIN PUBLIC UTILITY EASEMENTS UNLESS A USE OF EASEMENT PERMIT IS OBTAINED FROM THE CITY OF WICHITA PUBLIC WORKS & UTILITIES DEPARTMENT.

UTILITY EASEMENTS ARE HEREBY GRANTED AS INDICATED FOR THE CONSTRUCTION AND MAINTENANCE OF ALL PUBLIC UTILITIES. UTILITY EASEMENTS ARE HEREBY GRANTED FOR THE CONSTRUCTION AND MAINTENANCE OF UTILITY AND SANITARY SEWER LINES.

A DRAINAGE PLAN HAS BEEN DEVELOPED FOR THIS PLAT AND ALL RIGHTS-OF-WAY SHALL REMAIN AT ESTABLISHED GRADES, OR AS MODIFIED WITH THE APPROVAL OF THE CITY ENGINEER AND UNOBTAINED TO ALLOW FOR THE CONVEYANCE OF STORMWATER IN ACCORDANCE WITH THE STORMWATER MANUAL.

ACCESS CONTROLS PER CITY OF WICHITA ACCESS MANAGEMENT STANDARDS AND THE APPROVAL OF THE CITY TRAFFIC ENGINEER. THIS ADDITION SHALL BE SUBJECT TO THE GENERAL PROVISIONS OF EUREKA GARDENS COMMUNITY UNIT PLAN (DP-332).

KELLOGG AND WEST, LLC  
A KANSAS LIMITED LIABILITY COMPANY

*Christian Ablah*  
MANAGING MEMBER

### NOTARY CERTIFICATE

STATE OF KANSAS }  
COUNTY OF SEDGWICK } SS

THE INSTRUMENT WAS ACKNOWLEDGED BEFORE ME, THIS 24<sup>th</sup> DAY OF January, 2019, BY CHRISTIAN ABLAH, MANAGING MEMBER OF KELLOGG AND WEST, LLC, A KANSAS LIMITED LIABILITY COMPANY, ON BEHALF OF THE COMPANY.

*Levi Bond* NOTARY PUBLIC

MY APP'T. EXP. 1-16-2022

*Levi Bond* NOTARY PUBLIC - State of Kansas  
My Appt Expires

### MORTGAGE CERTIFICATE

WE THE UNDERSIGNED HOLDERS OF MORTGAGE ON THE ABOVE DESCRIBED PROPERTY, DO HEREBY CONSENT TO THIS PLAT OF "KELLOGG ILLINOIS ADDITION," WICHITA, SEDGWICK COUNTY, KANSAS.

FIDELITY BANK  
*Brett M. Wegeng*  
NAME: Brett M. Wegeng  
TITLE: Vice President

### NOTARY CERTIFICATE

STATE OF KANSAS }  
COUNTY OF SEDGWICK } SS

THE INSTRUMENT WAS ACKNOWLEDGED BEFORE ME, THIS 24<sup>th</sup> DAY OF January, 2019, BY Brett M. Wegeng, Vice President of FIDELITY BANK.

*Levi Bond* NOTARY PUBLIC

MY COMMISSION EXPIRES: 2-16-2022

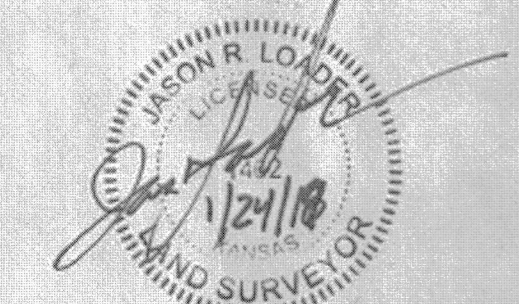
**SURVEYOR'S SUBJECT PROPERTY DESCRIPTION:**  
THAT PORTION OF LOTS 1, 2, 3 AND 4 OF PARKWAY ADDITION BEING RECORDED AS FILM/PAGE P02-7 AND THAT PORTION OF LOTS 10 AND 20, OF EUREKA GARDENS BEING RECORDED AS FILM/PAGE E-8-9, IN THE CITY OF WICHITA, COUNTY OF SEDGWICK, STATE OF KANSAS, BEING MORE PARTICULARLY DESCRIBED AS FOLLOWS:

BEGINNING AT THE NORTHWEST CORNER OF LOT 1 BONANZA ADDITION BEING RECORDED AS FILM/PAGE PC45-2; THENCE WEST ON THE NORTH LINE OF LOTS 3 AND 4 OF PARKWAY ADDITION, S88°46'53"W 40.00 FEET TO THE WEST RIGHT-OF-WAY LINE OF ILLINOIS STREET; THENCE ON SAID WEST RIGHT-OF-WAY LINE, N01°10'00"W 23.31 FEET TO THE SOUTHEAST CORNER OF A TRACT OF LAND DESCRIBED IN DOC.#FLM-PG 29675223; THENCE ON THE SOUTH LINE OF SAID TRACT OF LAND, S88°50'50"W 109.22 FEET; THENCE CONTINUING ON SAID SOUTH LINE, N01°17'03"W 17.98 FEET; THENCE CONTINUING ON SAID SOUTH LINE, S88°45'42"W 114.64 FEET; THENCE CONTINUING ON SAID SOUTH LINE, S00°43'10"E 12.04 FEET; THENCE CONTINUING ON SAID SOUTH LINE, S88°44'57"W 48.05 FEET TO THE EAST RIGHT-OF-WAY LINE OF WEST STREET; THENCE ON SAID EAST RIGHT-OF-WAY LINE, S07°25'57"E 18.94 FEET; THENCE CONTINUING ON SAID EAST RIGHT-OF-WAY LINE, S12°16'00"E 11.40 FEET; THENCE CONTINUING ON SAID EAST RIGHT-OF-WAY LINE, S13°45'00"E 120.16 FEET; THENCE CONTINUING ON SAID EAST RIGHT-OF-WAY LINE OF US HIGHWAY 54 (WEST KELLOGG AVENUE); THENCE ON SAID NORTH RIGHT-OF-WAY LINE, S79°17'15"E 60.98 FEET; THENCE CONTINUING ON SAID NORTH RIGHT-OF-WAY LINE, N87°14'00"E 129.77 FEET; THENCE CONTINUING ON SAID NORTH RIGHT-OF-WAY LINE, N03°18'19"W 5.08 FEET; THENCE CONTINUING ON SAID NORTH RIGHT-OF-WAY LINE, N87°08'37"E 32.12 FEET TO THE WEST LINE OF SAID LOT 1, BONANZA ADDITION; THENCE ON SAID WEST LINE, N01°10'00"W 180.26 FEET TO THE POINT OF BEGINNING.

I, JASON R. LOADER (LS), BEING A DULY LICENSED AND REGISTERED LAND SURVEYOR IN THE STATE OF KANSAS, HEREBY CERTIFY THAT THIS MAP OR PLAT AND THE SURVEY ON WHICH IT WAS BASED, WAS MADE IN ACCORDANCE WITH THE CURRENT KANSAS MINIMUM STANDARDS FOR BOUNDARY SURVEYS, WAS MADE BY ME OR UNDER MY DIRECT SUPERVISION, AND IS CORRECT TO THE BEST OF MY BELIEF AND ABILITY.

ALL EASEMENTS ARE HEREBY VACATED BY VIRTUE OF K.S.A. 12-512(b) AS AMENDED.

DATE OF SURVEY: JANUARY 15, 2019



JASON R. LOADER  
KANSAS RLS NO. 1462  
loaderj@kvensg.com

### PLANNING COMMISSION CERTIFICATE

STATE OF KANSAS }  
COUNTY OF SEDGWICK } SS

THIS PLAT OF "KELLOGG ILLINOIS ADDITION," WICHITA, SEDGWICK COUNTY, KANSAS, HAS BEEN SUBMITTED TO AND APPROVED BY THE WICHITA-SEDGWICK COUNTY METROPOLITAN AREA PLANNING COMMISSION, WICHITA, SEDGWICK COUNTY, KANSAS, DATED THIS 24<sup>th</sup> DAY OF January, 2019.

WICHITA-SEDGWICK COUNTY METROPOLITAN AREA PLANNING COMMISSION

*Cindy Miles* CHAIR  
*Dale Miller* SECRETARY

### GOVERNING BODY CERTIFICATE

STATE OF KANSAS }  
COUNTY OF SEDGWICK } SS

THIS PLAT APPROVED AND ALL DEDICATIONS SHOWN HEREON, ACCEPTED BY THE CITY COUNCIL OF THE CITY OF WICHITA, KANSAS, DATED THIS \_\_\_ DAY OF \_\_\_, 2019.

*Jeff Longwell* MAYOR  
*Karen Sublett* CITY CLERK

### REGISTER OF DEEDS CERTIFICATE

STATE OF KANSAS }  
COUNTY OF SEDGWICK } SS

THIS IS TO CERTIFY THAT THIS INSTRUMENT WAS FILED FOR RECORD IN THE REGISTER OF DEEDS OFFICE, AT \_\_\_ A.M. ON \_\_\_ DAY OF \_\_\_, 2019.

*Tonya Buckingham* REGISTER OF DEEDS  
*Judy J. Paget* DEPUTY

### DEPUTY COUNTY SURVEYOR CERTIFICATE

THIS PLAT HAS BEEN REVIEWED IN ACCORDANCE WITH K.S.A. 58-2005 ON THIS \_\_\_ DAY OF January, 2019.

*Tricia L. Robello*  
PS-1246  
TRICIA L. ROBELLO, P.S. #1246  
DEPUTY COUNTY SURVEYOR  
SEDGWICK COUNTY, KANSAS

### TRANSFER RECORD

ENTERED ON TRANSFER RECORD THIS \_\_\_ DAY OF \_\_\_, 2019.

\_\_\_ COUNTY CLERK  
*Kelly B. Arnold*

ONE-STEP FINAL PLAT  
**KELLOGG ILLINOIS ADDITION**  
TO  
WICHITA, SEDGWICK COUNTY, KANSAS  
**KAW VALLEY ENGINEERING, INC.**



820 N. EMPORIA, SUITE 100  
WICHITA, KANSAS 67202  
PH. (316) 440-4304 | FAX (316) 440-4309  
wh@kvensg.com | www.kvensg.com