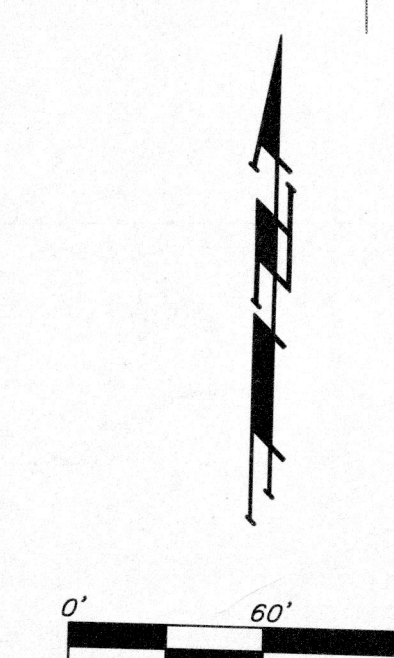
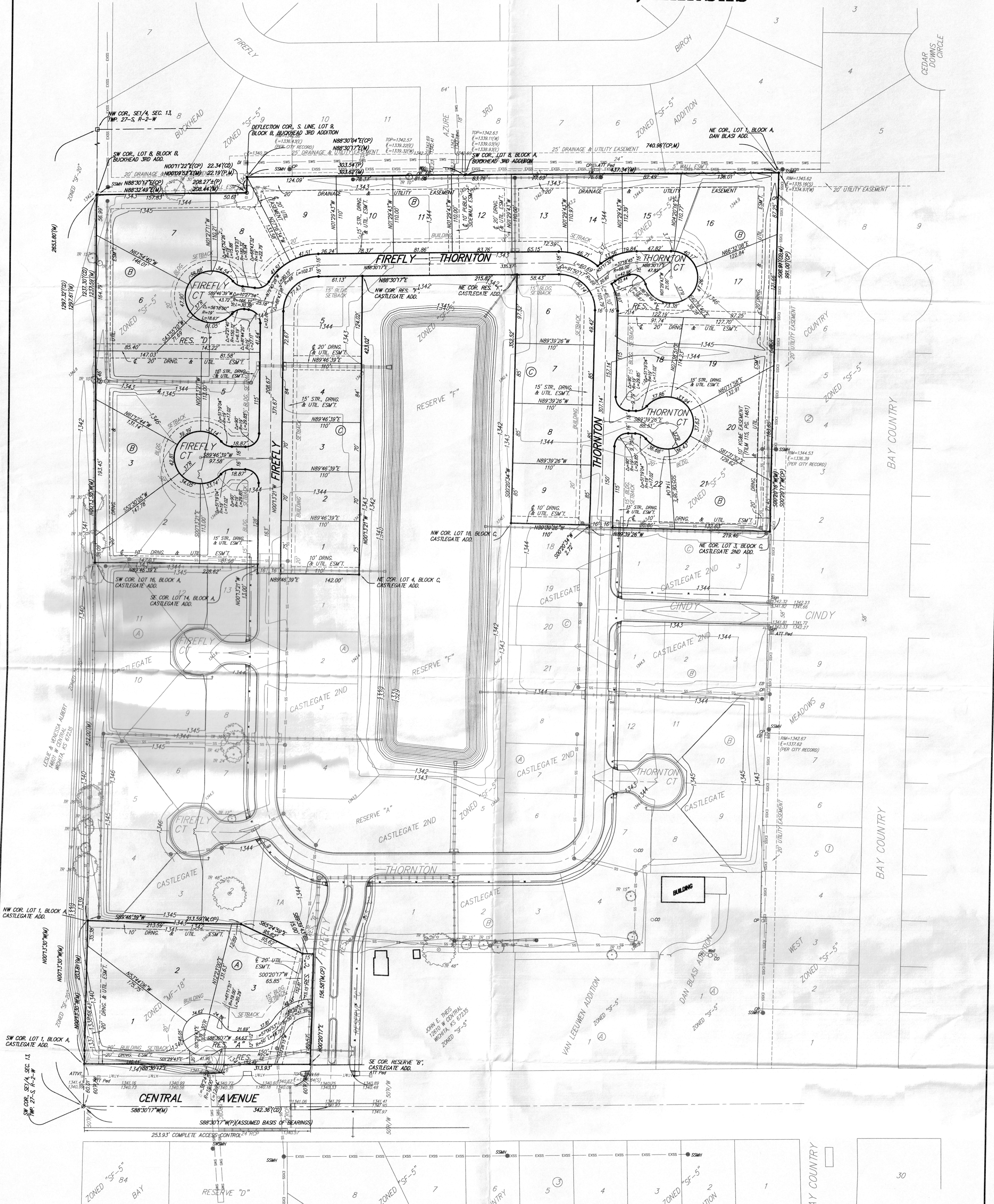


CASTLEGATE 3RD ADDITION

WICHITA, SEDGWICK COUNTY, KANSAS



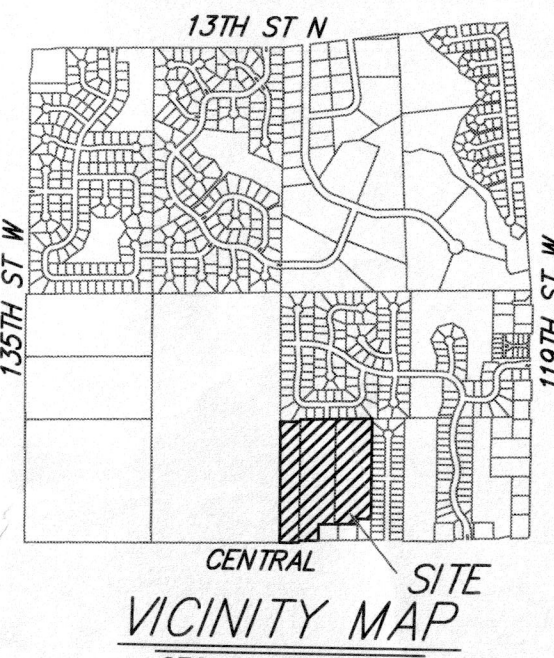
DATE OF PREPARATION: 13 MAY 2019
DATE OF TOPOGRAPHY: 31 JAN. 2014, 16 OCT. 2017, 8 APRIL 2019
CONTOUR INTERVALS = 1 FOOT

- = #4 REBAR W/ "BAUGHMAN" CAP (SET)
 - = #4 REBAR W/ "BAUGHMAN" CAP (FOUND)
 - = 1" IRON IN THIMBLE (FOUND/ORIGIN UNKNOWN)
 - = 3/4" IRON (FOUND/ORIGIN UNKNOWN)
 - = 1/2" IRON (FOUND/ORIGIN UNKNOWN)
 - = #4 REBAR (FOUND/ORIGIN UNKNOWN)
 - = #6 REBAR (FOUND/ORIGIN UNKNOWN)
- (M) = MEASURED
(D) = DESCRIBED
(P) = PLATTED
(CP) = CALCULATED PER PLATTED INFO.
(CD) = CALCULATED PER DESCRIBED INFO.
(CM) = CALCULATED PER MEASURED INFO.

LOT	BLOCK	ELEVATION
1-9	C	1340.0

BENCHMARK:
CHISELED CROSS CUT ON TOP OF CHISELED SQUARE CUT, TOP OF CURB ON NORTH SIDE OF CINDY, 21' SOUTH & 14.9' EAST OF THE SOUTHWEST CORNER OF RESERVE "E", CASTLEGATE ADDITION.
ELEVATION = 1341.99 (NAVD88)

CHISELED PLUS CUT INSIDE OF CHISELED SQUARE CUT, TOP OF CURB ON NORTH SIDE OF CINDY, 21' SOUTH & 14.9' EAST OF THE SOUTHWEST CORNER OF RESERVE "E", CASTLEGATE ADDITION.
ELEVATION = 1342.39 (NAVD88)



DRAINAGE PLAN NOTE:
A master drainage plan has been developed for this plat. All drainage easements, rights-of-way, and reserves shall remain at established grades (unless modified with the approval of the City Engineer) and shall be unobstructed to allow for the conveyance of stormwater in accordance with the Stormwater Manual. The maintenance of all drainageways and drainage facilities in backyard drainage easements and reserves shall be the responsibility of the property owner, and shall be enforced by the Homeowners' Association and be provided for in the Homeowners' Association covenants.

OWNER/DEVELOPER:
CASTLEGATE DEVELOPMENT, LLC
ATTN: RANDY HARDER
3308 N. LAKECREST
WICHITA, KS 67205

- SSMH ● = Sanitary Sewer Manhole
- EB □ = Electric Box
- PH ◆ = Fire Hydrant
- ATT Ped □ = ATT Pedestal
- EB □ = Electric Box
- CB □ = Catch Basin
- CO ○ = Cleanout
- CP ○ = Cable TV Pedestal
- DI ○ = Drop Inlet
- WTR WTR = WATER LINE
- AT&T AT&T = AT&T
- CoTV CoTV = CABLE TV
- FENCE FENCE = FENCE
- OHE OHE = OVERHEAD ELECTRIC LINE
- EXSS EXSS = SANITARY SEWER
- EXSS EXSS = EXCESS
- USE USE = UNDERGROUND ELECTRIC LINE
- USE USE = STORMWATER SEWER

CASTLEGATE 3RD ADDITION

Bayhman Company, P.A.
315 Ella St. Wichita, KS 67211 P 316-262-7271 F 316-262-0149
Bayhman ENGINEERING | SURVEYING | PLANNING | LANDSCAPE ARCHITECTURE