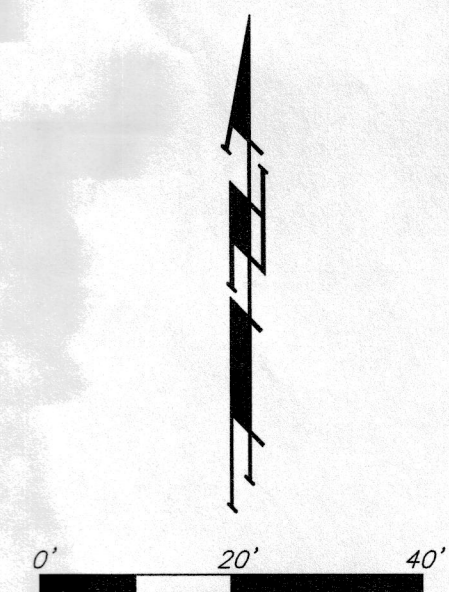


PRELIMINARY PLAT

# FIDELTY BANK ADDITION

## WICHITA, SEDGWICK COUNTY, KANSAS



DATE OF PREPARATION: 31 JULY 2017  
 DATE OF TOPOGRAPHY: 10 FEBRUARY 2016, 19 JULY 2017  
 CONTOUR INTERVALS = 1 FOOT

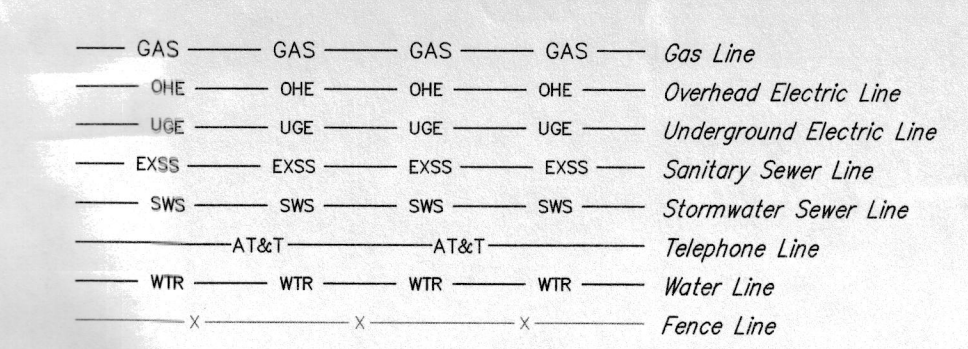
OWNER:  
 FIDELTY BANK  
 100 E ENGLISH ST  
 WICHITA, KS 67202-3706

LEGAL DESCRIPTION:  
 LOT 2, ROBSON HEIGHTS, SEDGWICK COUNTY, KANSAS, EXCEPT THE WEST 10 FEET THEREOF TAKEN FOR STREET IN CONDEMNATION CASE #4-77429, TOGETHER WITH LOT 3, EXCEPT THE NORTH 137.51 FEET THEREOF, ROBSON HEIGHTS, SEDGWICK COUNTY, KANSAS, TOGETHER WITH THE SOUTH HALF OF LOT 4, ROBSON HEIGHTS, SEDGWICK COUNTY, KANSAS, EXCEPT THE NORTH 6 FEET THEREOF, TOGETHER WITH THE SOUTH HALF OF LOT 5, ROBSON HEIGHTS, SEDGWICK COUNTY, KANSAS, EXCEPT THE NORTH 6 FEET THEREOF.

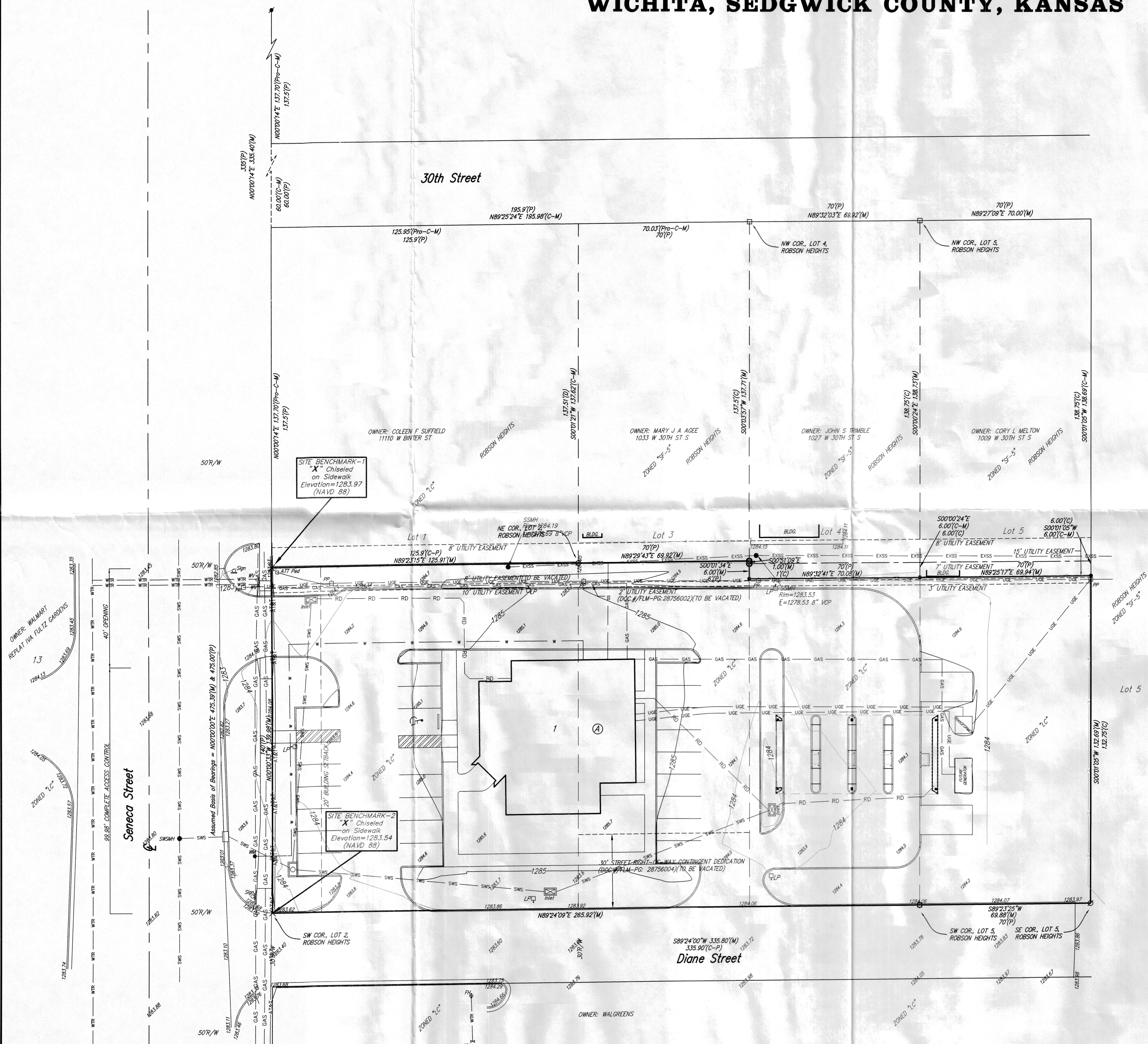
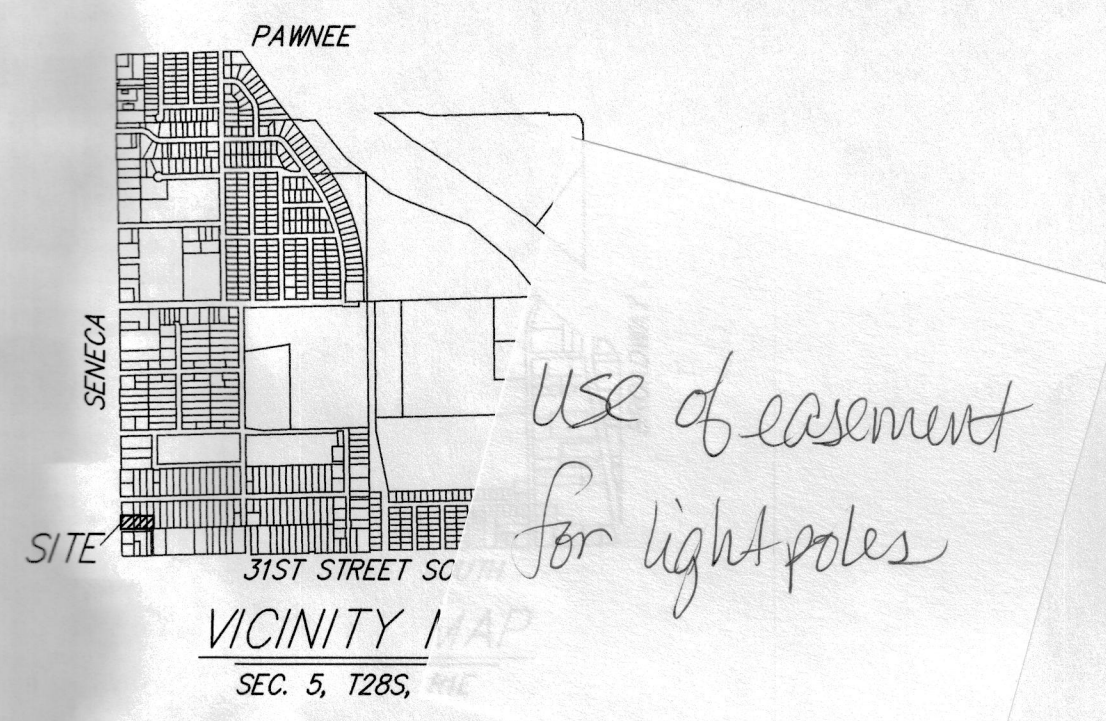
BENCHMARKS:  
 AS SHOWN ON FACE OF THE PLAT.

- = #4 Baughman Rebar Set
- X = Chiseled "X" Found (Origin Unknown)
- ⊙ = #4 Armstrong Land Surveyor Capped Rebar Found
- ⊕ = #4 Savoy Land Surveyor Capped Rebar Found
- ⊖ = Mag Nail Found
- ⊗ = 1/2" Iron Pipe Found (Origin Unknown)
- = #4 Rebar Found

- (C) = Calculated
- CH = Chord Length
- CH BR = Chord Bearing
- Δ = Delta Angle
- D = Degree of Curve
- (D) = Described
- L = Arc Length
- (M) = Measured
- (P) = Plotted
- (Pr) = Protracted
- R = Radius



- PP □ = Power Pole
- Sign □ = Sign
- ATT Ped □ = ATT Pedestal
- SMW ● = Stormwater Sewer Manhole
- WM ● = Water Meter
- WV ● = Water Valve
- PH ● = Fire Hydrant
- SSMH ● = Sanitary Sewer Manhole



### FIDELTY BANK ADDITION

Baughman Company, P.A.  
 315 Ellis St. Wichita, KS 67211 P 316-262-7271 F 316-262-0149  
 ENGINEERING | SURVEYING | PLANNING | LANDSCAPE ARCHITECTURE