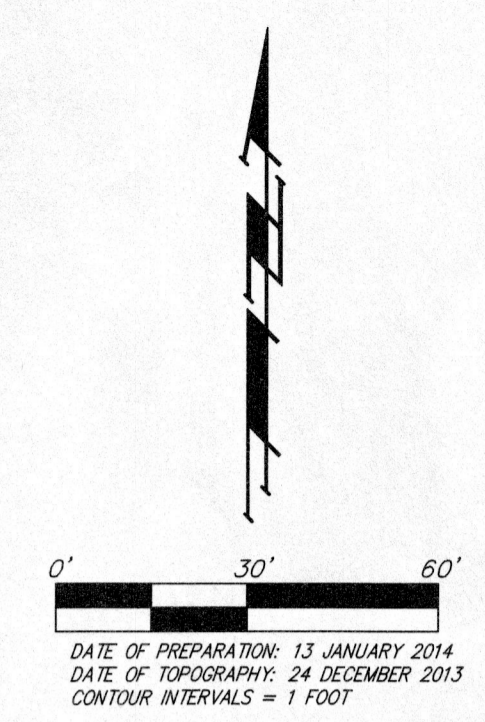
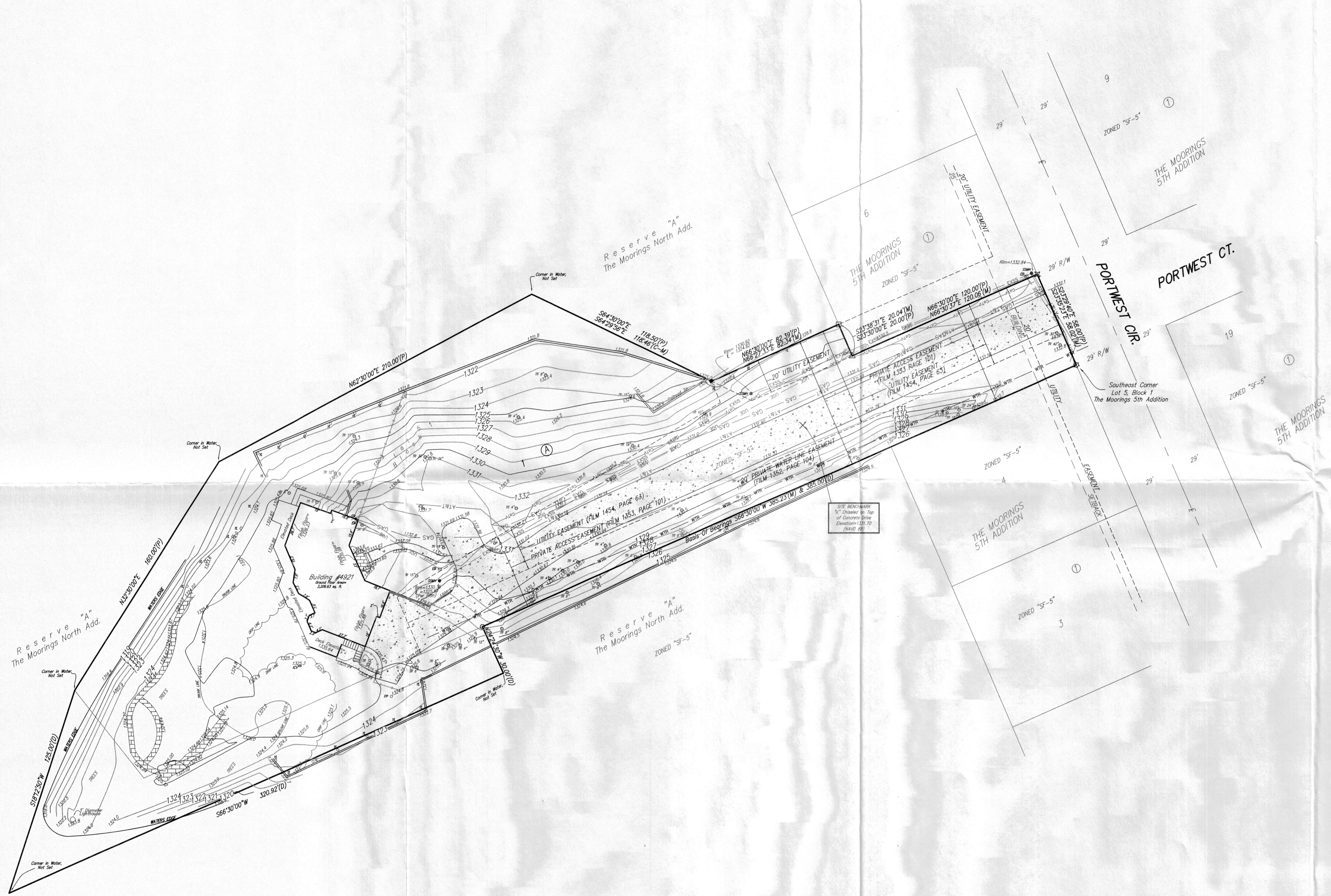


PRELIMINARY PLAT

# GRUNDMEYER ADDITION AT THE MOORINGS

## WICHITA, SEDGWICK COUNTY, KANSAS



DATE OF PREPARATION: 13 JANUARY 2014  
 DATE OF TOPOGRAPHY: 24 DECEMBER 2013  
 CONTOUR INTERVALS = 1 FOOT

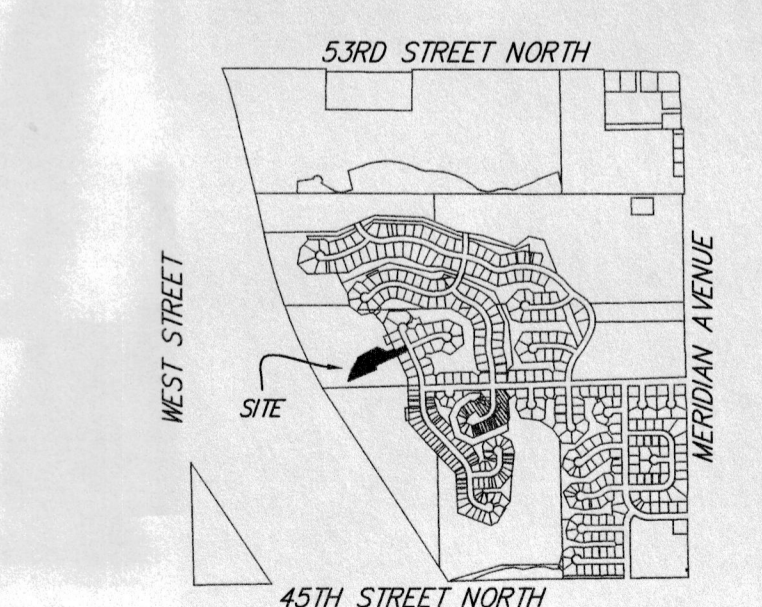
**OWNER:**  
 RAYMOND W GRUNDMEYER III  
 4921 N PORTWEST CIR  
 WICHITA, KS 67204

**LEGAL DESCRIPTION:**  
 LOT 5, BLOCK 1, THE MOORINGS 5TH ADDITION TO WICHITA, SEDGWICK COUNTY, KANSAS TOGETHER WITH THAT PART OF RESERVE "A", THE MOORINGS NORTH, AN ADDITION TO WICHITA, SEDGWICK COUNTY, KANSAS DESCRIBED AS COMMENCING AT A CORNER COMMON TO LOTS 4 AND 5 IN BLOCK 1, THE MOORINGS 5TH ADDITION TO WICHITA, SEDGWICK COUNTY, KANSAS; THENCE S86°30'W ALONG THE COMMON LINE OF SAID LOT 5, 385 FEET FOR A POINT OF BEGINNING; THENCE CONTINUING S86°30'W ALONG THE COMMON LINE OF SAID LOT 5 AND SAID RESERVE "A", 220 FEET TO A COMMON CORNER OF SAID LOT 5 AND SAID RESERVE "A"; THENCE N38°45'06"W ALONG A COMMON LINE OF SAID LOT 5 AND SAID RESERVE "A", 65.62 FEET TO A COMMON CORNER OF SAID LOT 5 AND SAID RESERVE "A"; THENCE S18°12'50"W, 125 FEET; THENCE N86°30'E, 320.92 FEET; THENCE N24°24'30"W, 30 FEET TO THE POINT OF BEGINNING.

**BENCHMARK:**  
 "X" CUT ON TOP OF CONCRETE DRIVE ON SUBJECT PROPERTY.  
 ELEV. = 1331.70 (NAVD 88)

- |   |  |
|---|--|
| <ul style="list-style-type: none"> <li>CONCRETE</li> <li>BRICK</li> </ul> | <ul style="list-style-type: none"> <li>(C) = CALCULATED</li> <li>(D) = DESCRIBED</li> <li>(M) = MEASURED</li> <li>(P) = PLATTED</li> <li>(PRO) = PRORATED</li> </ul> |
|---|--|
- 
- |   |  |
|---|--|
| <ul style="list-style-type: none"> <li>SMW = SANITARY SEWER MANHOLE</li> <li>OP = TREE</li> <li>OP = CABLE TV PEDESTAL</li> <li>EM = ELECTRIC METER</li> <li>EB = ELECTRIC BOX</li> <li>GM = GAS METER</li> <li>FP = FLAG POLE</li> <li>CV = IRRIGATION CONTROL VALVE - VALVE BOX</li> <li>HL = YARD LIGHT</li> </ul> | <ul style="list-style-type: none"> <li>○ = #4 BAUGHMAN REBAR SET</li> <li>○ = #4 BAUGHMAN REBAR FOUND</li> <li>□ = #4 REBAR FOUND WITH "1.5 1117" CAP FOUND</li> <li>△ = #5 REBAR FOUND (ORIGIN UNKNOWN)</li> <li>× = CHISELED "X" FOUND (ORIGIN UNKNOWN)</li> <li>○ = #4 REBAR WITH "1.5 350" CAP FOUND</li> <li>○ = #4 REBAR WITH "SRB" CAP FOUND</li> </ul> |
|---|--|

- |           |           |           |           |           |                             |
|-----------|-----------|-----------|-----------|-----------|-----------------------------|
| — CTV —   | — CTV —   | — CTV —   | — CTV —   | — CTV —   | — Cable Line                |
| — GAS —   | — GAS —   | — GAS —   | — GAS —   | — GAS —   | — Gas Line                  |
| — OHE —   | — OHE —   | — OHE —   | — OHE —   | — OHE —   | — Overhead Electric Line    |
| — UGE —   | — UGE —   | — UGE —   | — UGE —   | — UGE —   | — Underground Electric Line |
| — EXSS —  | — EXSS —  | — EXSS —  | — EXSS —  | — EXSS —  | — Sanitary Sewer Line       |
| — SWS —   | — SWS —   | — SWS —   | — SWS —   | — SWS —   | — Stormwater Sewer Line     |
| — AT&T —  | — AT&T —  | — AT&T —  | — AT&T —  | — AT&T —  | — Telephone Line            |
| — WTR —   | — WTR —   | — WTR —   | — WTR —   | — WTR —   | — Water Line                |
| — — — — — | — — — — — | — — — — — | — — — — — | — — — — — | — Fence Line                |



VICINITY MAP  
 SEC. 24, T26S, R1W

### GRUNDMEYER ADDITION AT THE MOORINGS

13 JANUARY 2014

**Baughman Company, P.A.**  
 315 Ellis St. Wichita, KS 67211 P 316-262-7271 F 316-262-0149

ENGINEERING | SURVEYING | PLANNING | LANDSCAPE ARCHITECTURE

E:\PROJECTS\GRUNDMEYER ADD\_13-11-PO5\GRUNDMEYER\_OSF.DWG\NWL