

HOME BASE ADDITION

TO WICHITA, SEDGWICK COUNTY, KANSAS
PRELIMINARY PLAT

PIN #: 00276987

PIN #: 00276982

UNPLATTED
Owner: Murfin Acres LLP
Wichita, KS

UNPLATTED
Owner: Rizwan I. Husami
Wichita, KS

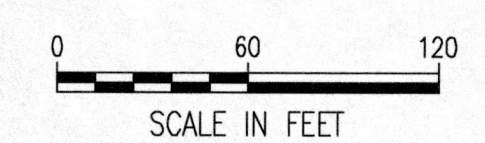
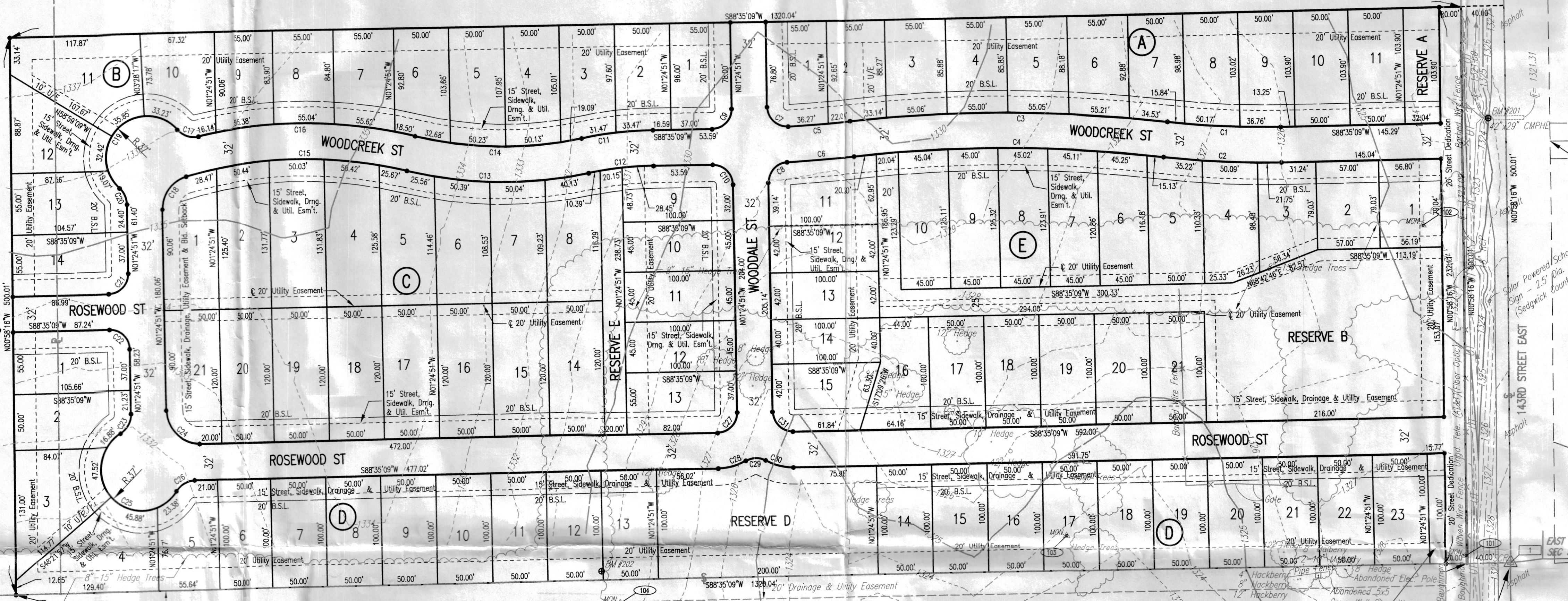
UNPLATTED
Owner: Rizwan I. Husami
Wichita, KS

CAMBRIA ADDITION

CURVE NO.	RADIUS	DELTA	LENGTH
C1	768.00'	7°40'03"	102.78'
C2	800.00'	7°40'03"	107.06'
C3	1282.00'	12°52'15"	287.99'
C4	1250.00'	12°52'15"	280.80'
C5	1250.00'	2°40'21"	58.31'
C6	1282.00'	2°48'40"	62.90'
C7	18.00'	92°31'50"	29.07'
C8	18.00'	87°36'07"	27.52'
C9	18.00'	90°00'00"	28.27'
C10	18.00'	90°00'00"	28.27'

CURVE NO.	RADIUS	DELTA	LENGTH
C11	350.00'	10°37'48"	64.93'
C12	318.00'	10°37'48"	59.00'
C13	380.00'	25°02'49"	168.12'
C15	400.00'	29°22'03"	205.02'
C16	432.00'	26°37'00"	200.69'
C17	20.00'	61°36'28"	21.51'
C18	30.00'	75°02'58"	39.30'
C19	37.00'	186°42'35"	120.57'
C20	20.00'	47°18'05"	16.51'
C21	18.00'	90°00'00"	28.27'

CURVE NO.	RADIUS	DELTA	LENGTH
C22	18.00'	90°00'00"	28.27'
C23	20.00'	59°30'43"	20.77'
C24	30.00'	90°00'00"	47.12'
C25	37.00'	206°59'15"	133.67'
C26	20.00'	57°28'31"	20.06'
C27	18.00'	90°00'00"	28.27'
C28	50.00'	30°00'01"	26.18'
C29	18.00'	60°00'01"	18.85'
C30	50.00'	30°00'02"	26.18'
C31	18.00'	90°00'00"	28.27'



CONTROL POINTS

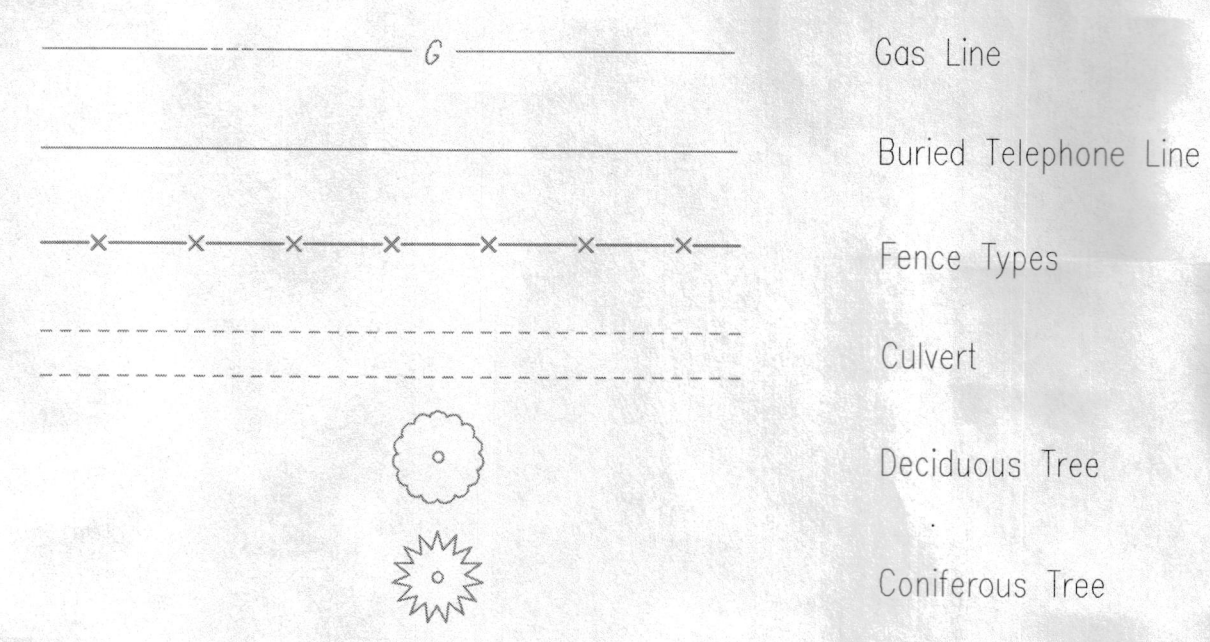
- Pt. No. 101
1/2" REBAR WITH CONTROL CAP
N: 1,675,898.2930, E: 1,696,923.112
1. 7.4' SOUTH SOUTHEAST TO BAUGHMAN BAR AT SOUTHEAST CORNER OF PROPERTY.
2. 20.5' SOUTHWEST TO BAUGHMAN BAR AT SOUTHEAST CORNER OF PROPERTY.
3. 41.6' EAST TO CENTERLINE OF 143RD STREET EAST.
- Pt. No. 102
1/2" REBAR WITH CONTROL CAP
N: 1,676,194.8370, E: 1,696,881.8520
1. 75.5' EAST TO CENTERLINE OF 143RD STREET EAST.
2. 113.1' NORTHEAST TO BENCHMARK #201.
3. 299.4' SOUTH SOUTHEAST TO HCP #101.
- Pt. No. 103
1/2" REBAR WITH CONTROL CAP
N: 1,675,850.8520, E: 1,696,155.0320
1. 33.6' NORTHWEST TO BENCHMARK #202
2. 409' EAST NORTHEAST TO HORIZONTAL CONTROL POINT #103
3. 810' EAST TO CENTERLINE OF 143RD STREET EAST

SECTION CORNER

- Pt. No. 1
EAST 1/4 CORNER, SEC 35, T27S, R2E
N: 1,675,891.9884, E: 1,696,964.4045
3/4" IRON PIPE IN LINE WITH CENTERLINE OF ASPHALT ROAD
40.00' WEST TO 5/8" REBAR WITH BAUGHMAN CAP.
60.00' WEST TO 5/8" REBAR WITH BAUGHMAN CAP.
- Pt. No. 4
NORTH 1/4 CORNER, SEC 35, T27S, R2E
N: 1,678,484.2476, E: 1,694,280.2778
3/4" IRON PIPE
46.50' SOUTHEAST TO 3 NAILS IN FENCE POST.
57.65' NORTHEAST TO A CHISELED CROSS ON A FENCE POST.
34.03' SOUTH TO THE TOP CENTER OF A FIRE HYDRANT.
- Pt. No. 5
NORTHEAST CORNER, SEC 35, T27S, R2E
N: 1,678,539.0198, E: 1,695,919.5354
3/4" IRON PIPE
69.63' SOUTHEAST TO A 60D NAIL IN THE SOUTHWEST FACE OF POWER POLE.
73.73' NORTHWEST TO A 40D NAIL IN THE SOUTHWEST FACE OF A LIGHT POLE.
51.95' NORTHEAST TO THE CENTER OF A WATER VALVE IN ASPHALT PAVEMENT.
- Pt. No. 1500
SOUTH 1/4 CORNER, SEC 35, T27S, R2E
N: 1,673,150.3632, E: 1,694,369.7070
5/8" REBAR WITH GARBER CAP
40.40' NORTH TO 3 NAILS IN WEST FACE OF FENCE CORNER POST.
52.00' NORTHEAST TO 3 NAILS IN EAST FACE OF HEDGE FENCE POST.
53.50' SOUTHEAST TO 3 NAILS IN WEST FACE OF CEDAR TREE.

BENCH MARK LIST

- BM #201 - CHISELED SQUARE ON CENTER OF WEST HUBGUARD OVER CORRUGATED METAL PIPE UNDER 143RD STREET EAST.
ELEV. = 1326.38
- (NAVD88)
- BM #202 - TOP OF "T" POST NORTH NORTHWEST OF HORIZONTAL CONTROL POINT #104
ELEV. = 1329.68
- (NAVD88)



LEGAL DESCRIPTION:
THE SOUTH 500 FEET OF THE EAST 1,360 FEET OF THE NORTHEAST QUARTER SECTION 35, TOWNSHIP 27 SOUTH, RANGE 2 EAST, 6TH PRINCIPAL MERIDIAN, SEDGWICK COUNTY, KANSAS.

DATE OF PREPARATION: JUNE 25, 2018
DATE OF SURVEY: JUNE 4, 2018
OWNERS AND SUB-DIVIDERS:

MURFIN ACRES, LLP
250 N. WATER, SUITE 300
WICHITA, KS 67202

SURVEYOR:
PROFESSIONAL ENGINEERING CONSULTANTS, P.A.
303 S. TOPEKA
WICHITA, KS 67202

