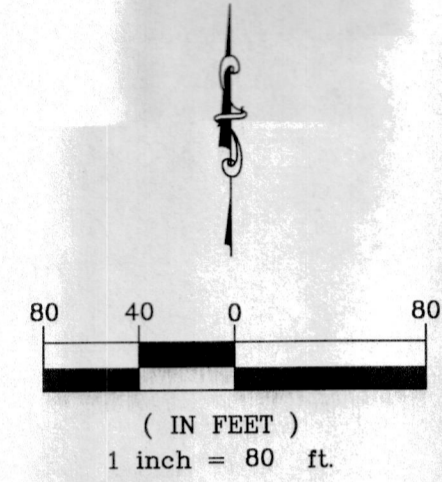
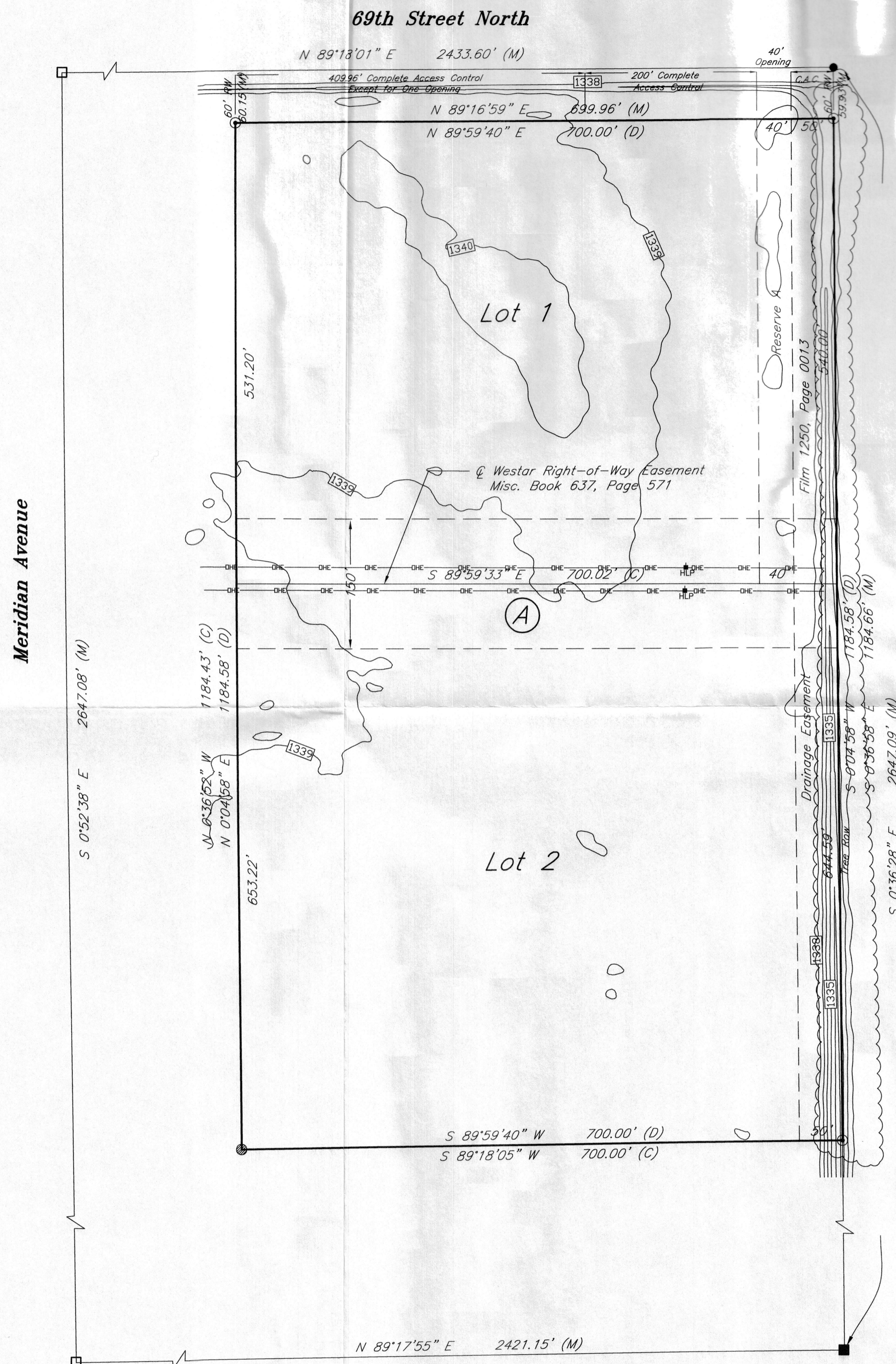


One-Step Final Plat Islamic Cemetery Addition Sedgwick County, Kansas

Part of the NW ¼, Section 7, Township 26 South, Range 1 East



- Legend**
- M Measured
 - D Deeded
 - 1/2" Rebar (found) Savoy
 - Aluminum Cap (found)
 - 3/8" Rebar (found) no cap
 - 1" Square Bar (found)
 - ⊙ 3/8" Rebar (set) KEMPA CLS #157

State of Kansas)
County of Sedgwick) SS

I, Bradley C. Ward, a licensed land surveyor of the State of Kansas, do hereby certify that the following described tract of land was surveyed on this 20th day of May, 2018 and the accompanying one-step final plat prepared and that all the monuments shown herein actually exist and their positions are correctly shown to the best of my knowledge and belief:

LEGAL DESCRIPTION

Part of the Northwest Quarter of Section 7, Township 26 South, Range 1 East of the Sixth Principal Meridian, Sedgwick County, Kansas, being more particularly described as: Beginning at the Northeast corner of the Northwest Quarter of Section 7; thence South, on the East line of said Northwest Quarter, a distance of 1244.58 feet; thence West, parallel with the North line of said Northwest Quarter, a distance of 700 feet; thence North, parallel with the East line of said Northwest Quarter, a distance of 1244.58, to the North line of said Northwest Quarter; thence East, on the North line of said Northwest Quarter, a distance of 700 feet, to the Point of Beginning. EXCEPT the North 60 feet for right of way.

Tract contains 829,156 square feet ±, or 19.0 acres ±.

All easements and rights-of-way within said tract are hereby vacated by virtue of KSA 12-512b amended.

Bradley C. Ward, PS #920

State of Kansas)
County of Sedgwick) SS

Know all men by these presents, that we, the undersigned, have caused the land described in the surveyor's certificate to be platted into Lots and a Block to be known as the Islamic Cemetery Addition, Wichita, Sedgwick County, Kansas. Any street dedications shown are dedicated to and for the use of the public. The access controls are hereby granted to the appropriate governing body as shown hereon. Reserve A shall be used for a private drive, utilities and signage and shall be maintained by the owners of Lot 2. A drainage plan has been developed for the plat and that all drainage easements, rights-of-way, and reserves shall remain at established grades or as modified with the approval of the applicable City or County Engineer, and unobstructed to allow for the conveyance of stormwater in accordance with the Stormwater Manual. And further that the land contained herein is held and shall be conveyed subject to any applicable restrictions, reservations and covenants now on file or hereafter filed in the Office of the Register of Deeds of Sedgwick County, Kansas.

By: _____ Date _____
Hussam Madi
Islamic Society of Wichita, Inc.

State of Kansas)
County of Sedgwick) SS

This instrument was acknowledged before me on this _____ day of _____, 2018, Hussam Madi, Islamic Society of Wichita.

Notary Public _____
My Commission Expires: _____

BASIS OF BEARING:
ASTRONOMIC - DERIVED FROM GLOBAL POSITIONING SYSTEM OBSERVATIONS. ALL LINES HEREON STAND ALONE AS A TRUE SURFACE BEARING.

State of Kansas)
City of Wichita) SS

This plat of the Islamic Cemetery Addition, Wichita, Sedgwick County, Kansas, has been submitted to and approved by the Wichita-Sedgwick County Metropolitan Area Planning Commission, Wichita, Kansas. Dated this _____ day of _____, 2018.
Wichita-Sedgwick County Metropolitan Area Planning Commission.

David W. Foster, Chair
Dale Miller, Secretary

State of Kansas)
City of Wichita) SS

This plat approved and all dedications shown hereon accepted by the Board of County Commissioners, Sedgwick County, Kansas, this _____ day of _____, 2018.

David T. Dennis, Chairman, Third District

Kelly B. Arnold, County Clerk

Entered on transfer record this _____ day of _____, 2018.

Kelly B. Arnold, County Clerk

State of Kansas)
County of Sedgwick) SS

This is to certify that this plat has been filed for record in the Office of the Register of Deeds this _____ day of _____, 2018, at _____ o'clock _____M, and is duly recorded.

Tonya Buckingham, Register of Deeds

Judy J. Paget, Deputy

Reviewed in accordance with K.S.A. 58-2005 on this _____ day of _____, 2018.

Tricia L. Robello, L.S. #1246
Deputy County Surveyor
Sedgwick County, Kansas

18074 Islamic Cemetery ONE STEP FINAL PLAT.dwg Prepared: 5/23/18

117 E. Lewis, Wichita, KS 67202 (316)264-0242