

PRELIMINARY PLAT 47TH AND WEBB ADDITION

Sedgwick County, Kansas

Legal Description:

That part of the NE1/4 of Sec. 20, Twp. 28-S, R-2-E of the 6th P.M., Sedgwick County, Kansas described as beginning at the S.E. Corner thereof; thence N01°23'52"W, along the east line of said NE1/4, 466.95 feet; thence S89°00'58"W, parallel with the south line of said NE1/4, 526.95 feet; thence S01°23'52"E, parallel with the east line of said NE1/4, 466.95 feet to the south line of said NE1/4; thence N89°00'58"E, along the south line of said NE1/4, 526.95 feet to the point of beginning.

OWNER:
 Kansas Gas and Electric Company
 % Westar Energy
 Attn: Sabrena Gonzalez
 818 S. Kansas Avenue
 Topeka, KS 66601
 Ph 785-575-8478

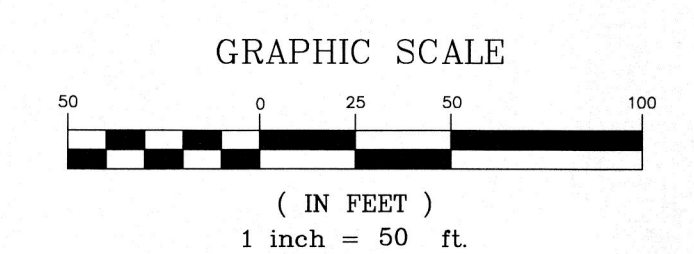
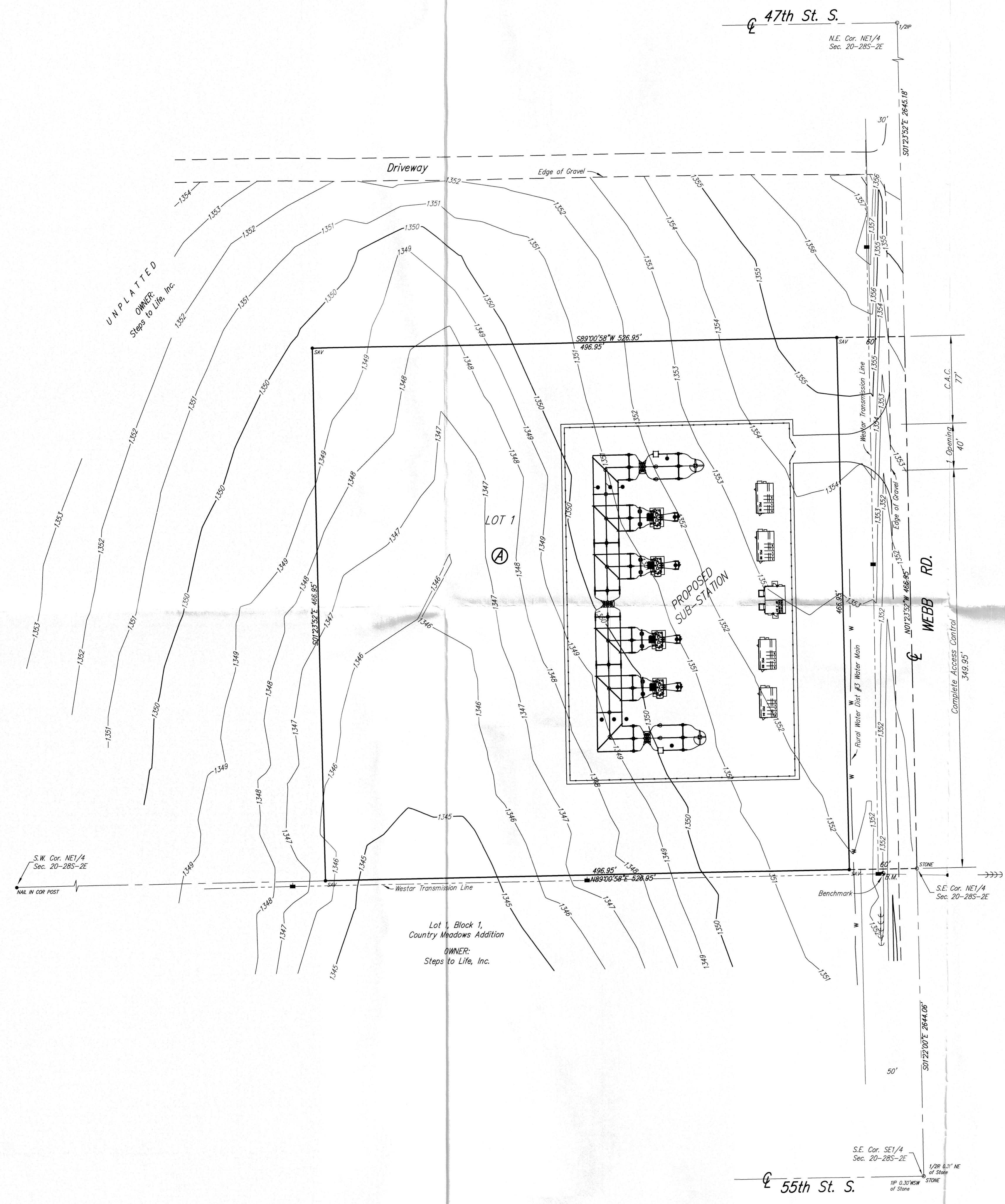
GROSS SIZE
 246048.92 Sq. Ft.
 5.65 Acres±

NET SIZE
 218031.98 Sq. Ft.
 5.01 Acres±

MINIMUM LOT SIZE
 218031.98 Sq. Ft.
 5.01 Acres±

ZONING
 RR - Rural Residential

CONTROL NUMBER
 265811



- C.A.C. = Complete Access Control
- Benchmark: R.R. Spike in Power Pole
 25' E. of S.E. Corner of Lot 1, Block A,
 47th and Webb Addition
 Elevation = 1352.96 (NAVD88)
- 1/2" = 1/2" Iron Pipe (Found)
 - 1/2" = 1/2" Rebar (Found)
 - 1" = 1" Iron Pipe (Found)
 - stone = Original Government Stone (Found)
 - SA = 1/2" Rebar w/Savoy Cap (Set)
 - NAI IN COR POST = 60d Nail in Fence Corner Post (Set)

- LEGEND**
- G = GAS MAIN
 - W = WATER MAIN
 - SS = SANITARY SEWER
 - SWS = STORM WATER SEWER
 - UGE = UNDER GROUND ELECTRIC
 - UGT = UNDER GROUND TELEPHONE
 - B.M. = BENCH MARK
 - ← = GUY ANCHOR
 - = GUY POLE
 - = HIGH LINE POLE

