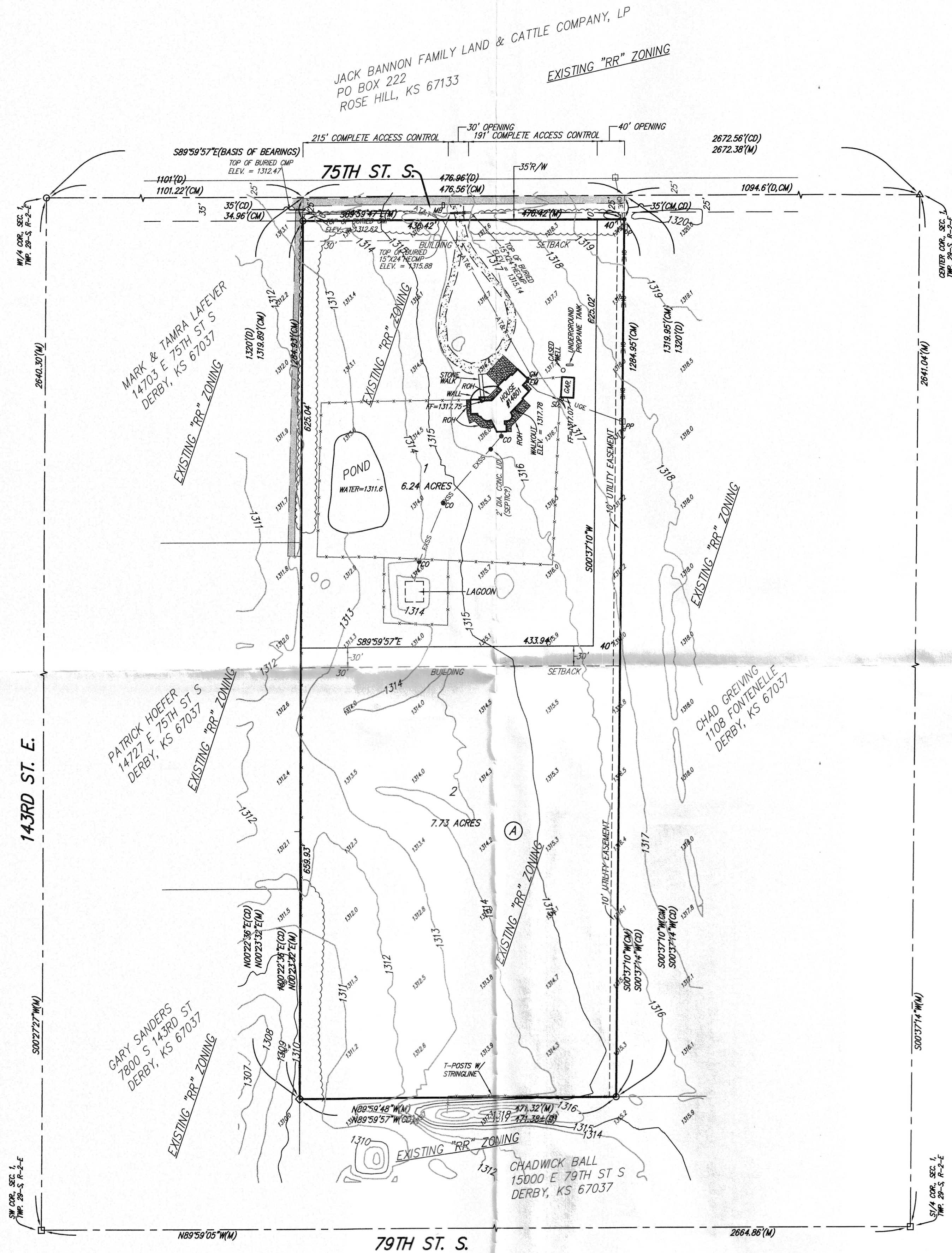


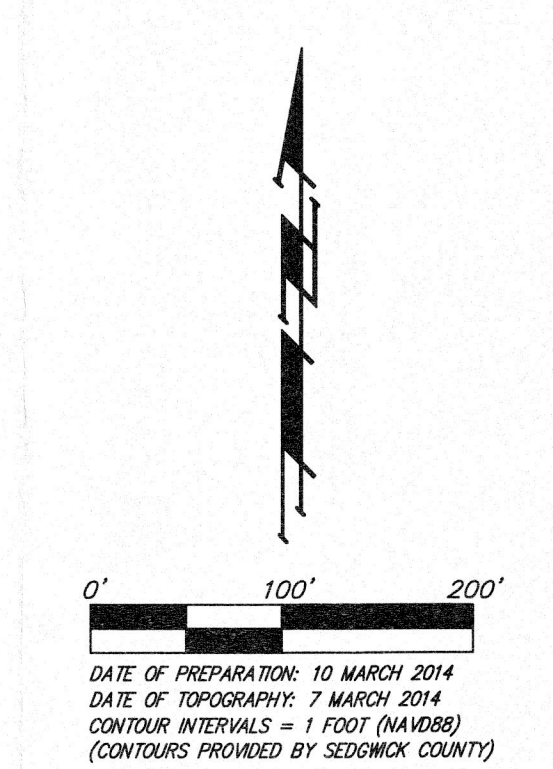
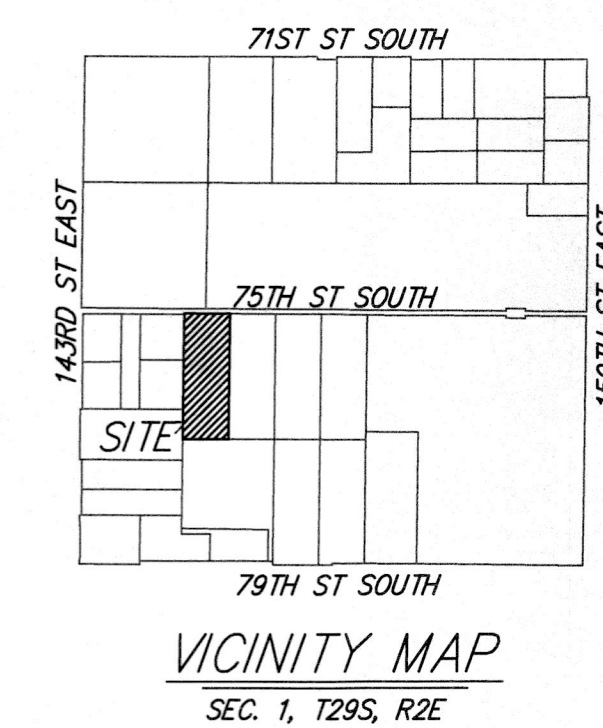
PRELIMINARY PLAT
GLASER ADDITION
 SEDGWICK COUNTY, KANSAS



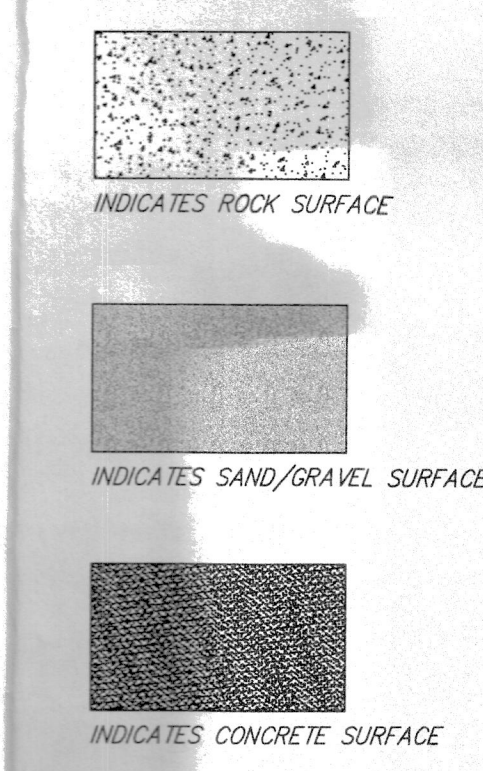
OWNER/DEVELOPER:
 GARRETT GLASER
 14801 E. 75TH ST S
 DERBY, KS 67037

LEGAL DESCRIPTION:
 A TRACT IN THE SOUTHWEST QUARTER OF SECTION 1,
 TOWNSHIP 29 SOUTH, RANGE 2 EAST OF THE 6TH P.M.,
 SEDGWICK COUNTY, KANSAS, DESCRIBED AS BEGINNING AT A
 POINT 1094.6 FEET WEST OF THE NORTHEAST CORNER
 THEREOF; THENCE WEST ALONG THE NORTH LINE OF SAID
 SW 1/4, 476.96 FEET TO A POINT 1101 FEET EAST OF THE
 NORTHWEST CORNER THEREOF; THENCE WITH AN ANGLE TO
 THE LEFT OF 89° 37' 27" A DISTANCE OF 1320 FEET; THENCE
 EAST PARALLEL WITH THE NORTH LINE OF SAID SW 1/4,
 471.38 FEET, MORE OR LESS TO A POINT 1094.6 FEET WEST
 OF THE EAST LINE OF SAID SW 1/4; THENCE NORTH 1320
 FEET TO BEGINNING.

BENCHMARK:
 RAILROAD SPIKE IN WEST FACE
 OF POWER POLE, 11.4' S. & 1.0'
 W. OF NE COR., LOT 2, BLOCK A.
 ELEV. = 1321.17 NAVD88



- FF = FINISHED FLOOR ELEVATION
 ROH = ROOF OVERHANG
- = #4 REBAR W/ "BAUGHMAN" CAP (SET)
 - = 1/2" IRON PIPE (FOUND)(ORIGIN UNKNOWN)
 - △ = 3/4" IRON PIPE (FOUND)(ORIGIN UNKNOWN)
 - = #5 REBAR (FOUND)(ORIGIN UNKNOWN)
 - = #4 REBAR (FOUND)(ORIGIN UNKNOWN)
- (M) = MEASURED
 (D) = DESCRIBED
 (CM) = CALCULATED PER MEASURED INFO.
 (CD) = CALCULATED PER DESCRIBED INFO.
- PP □ = Power Pole
 SD = Satellite Dish
 CM = Gas Meter
 MB □ = Mail Box
 CA = Curb Anchor
 EM = Electric Meter
 CS = Sanitary Sewer Cleanout



- TREE ROW DRIP LINE
- OHE — OHE — OHE — OHE — OHE — OHE — OHE — OVERHEAD ELECTRIC LINE
- EXSS — EXSS — EXSS — EXSS — EXSS — EXSS — EXSS — SANITARY SEWER LINE
- STORM SEWER LINE
- AT&T — AT&T — AT&T — AT&T — AT&T — TELEPHONE LINE
- FENCE LINE
- UGE — UGE — UGE — UGE — UGE — UNDERGROUND ELECTRIC LINE

NOTE:
 A DRAINAGE PLAN HAS BEEN DEVELOPED FOR THIS SUBDIVISION
 AND IS ON FILE WITH SEDGWICK COUNTY OR THE APPROPRIATE
 GOVERNING BODY. DRAINAGE INTENT SHALL REMAIN AS
 DEPICTED OR AS MODIFIED WITH THE APPROVAL OF THE
 ENGINEER FOR SEDGWICK COUNTY OR THE ENGINEER FOR THE
 APPROPRIATE GOVERNING BODY. NO OBSTRUCTIONS WHICH
 IMPED THE FLOW OF THIS DRAINAGE PLAN SHALL BE ALLOWED.

GLASER ADDITION
 10 MARCH 2014

Baughman Company, P.A.
 315 Ellis St. Wichita, KS 67211 P 316-262-7271 F 316-262-0149

Baughman ENGINEERING | SURVEYING | PLANNING | LANDSCAPE ARCHITECTURE

E:\PROJECTS\GLASER ADDITION\PLAT.DRAWINGS\GLASER P.DWG-MGC