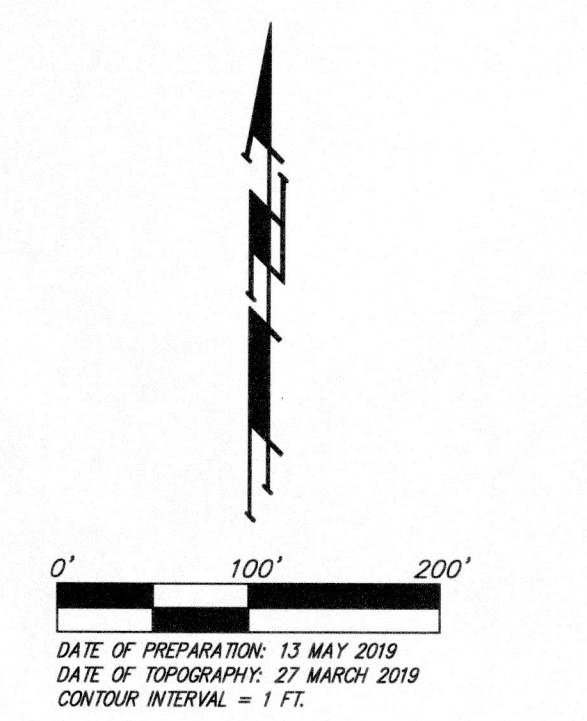
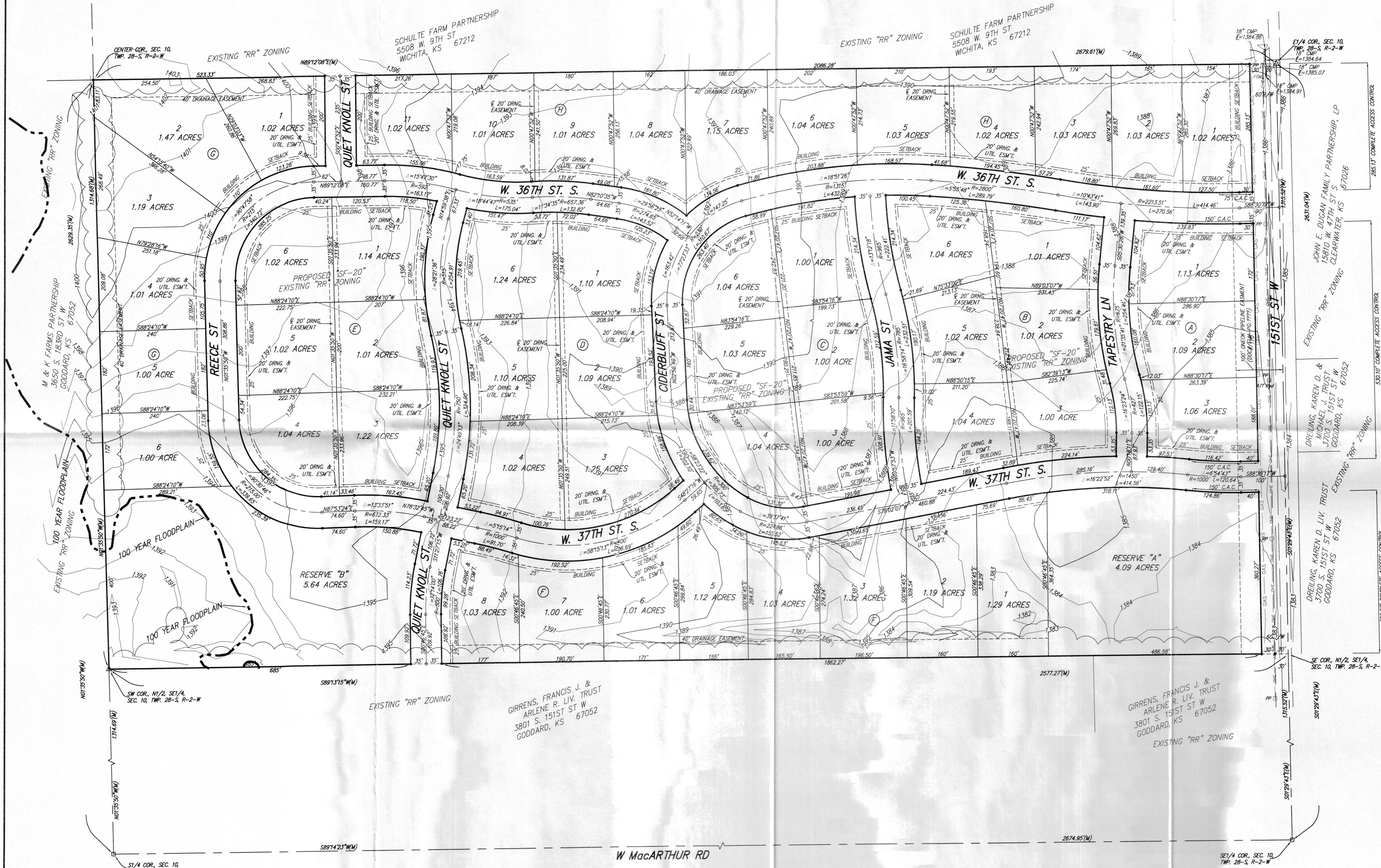


PRELIMINARY PLAT
OSAGE COUNTRY ADDITION
 SEDGWICK COUNTY, KANSAS



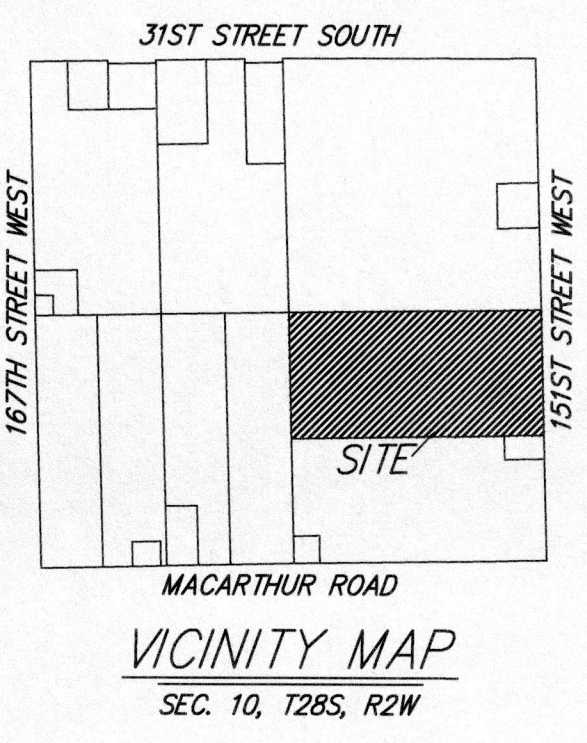
OWNER/DEVELOPER:
 KELLEY COMMERCIAL, INC.
 A/T/N: STEVE KELLEY
 633 N. KESSLER
 WICHITA, KS 67203

LEGAL DESCRIPTION:
 THE NORTH HALF OF THE SOUTHEAST
 QUARTER OF SECTION 10, TOWNSHIP 28
 SOUTH, RANGE 2 WEST OF THE SIXTH
 PRINCIPAL MERIDIAN, SEDGWICK COUNTY,
 KANSAS, SUBJECT TO ROAD
 RIGHTS-OF-WAY OF RECORD.

BENCHMARK:
 TOP OF "T" POST, 23.9' E. & 55.7' S.
 OF THE NW COR., LOT 2, BLOCK G.
 ELEV. = 1401.14 (NAVD08B)
 TOP OF "T" POST, 93.5' E. & 194.2' N.
 OF THE SW COR., RESERVE B.
 ELEV. = 1391.62 (NAVD08B)
 TOP OF "T" POST, 51.5' W. & 55.1' S.
 OF THE NE COR., LOT 7, BLOCK H.
 ELEV. = 1389.93 (NAVD08B)

- = #4 REBAR (FOUND)
- = #4 REBAR W/ "BAUGHMAN" CAP (SET)
- = #5 REBAR (FOUND)
- △ = STONE (FOUND)
- (M) = MEASURED
- (D) = DESCRIBED
- (P) = PLATED
- (C) = CALCULATED
- C.A.C. = COMPLETE ACCESS CONTROL
- RESERVE "A" IS RESERVED FOR OPEN SPACE, BERMS, LAKES, LANDSCAPING, ENTRY MONUMENTS, & DRAINAGE PURPOSES.
- RESERVE "B" IS RESERVED FOR OPEN SPACE, BERMS, LAKES, LANDSCAPING, FLOODPLAIN & DRAINAGE PURPOSES.

- DRIP LINE OF TREE ROW
- SWS = SWS = Corrugated Metal Pipe
- GAS = GAS = Gas Line
- OHE = OHE = Overhead Electric Line
- GRV = GRV = Gravel Road
- ATT Ped □ = ATT Pedestal
- FOW □ = Fiber Optic Marker
- PP □ = Power Pole



OSAGE COUNTRY ADDITION

Baughman Company, P.A.
 315 Ellis St. Wichita, KS 67211 P 316-262-7271 F 316-262-0149
 Baughman ENGINEERING | SURVEYING | PLANNING | LANDSCAPE ARCHITECTURE