

One-Step Final Plat Leak Addition Sedgwick County, Kansas

Part of the SE 1/4, Section 23, Township 25 South, Range 1 East

State of Kansas)
County of Sedgwick) SS

State of Kansas)
City of Wichita) SS

I, Keith Severns, a licensed land surveyor of the State of Kansas, do hereby certify that the following described tract of land was surveyed on the 30th day of August, 2018 and the accompanying one-step final plat prepared and that all the monuments shown herein actually exist and their positions are correctly shown to the best of my knowledge and belief:

This plat of the Leak Addition, Sedgwick County, Kansas, has been submitted to and approved by the Wichita-Sedgwick County Metropolitan Area Planning Commission, Wichita, Kansas. Dated this _____ day of _____, 2019.
Wichita-Sedgwick County Metropolitan Area Planning Commission.

Cindy Miles, Chair

Dale Miller, Secretary

State of Kansas)
City of Wichita) SS

This plat approved and all dedications shown hereon accepted by the Board of County Commissioners, Sedgwick County, Kansas, this _____ day of _____, 2019.

Pete Meitzner, Chairman, Fourth District

Kelly B. Arnold, County Clerk

Entered on transfer record this _____ day of _____, 2019.

Kelly B. Arnold, County Clerk

State of Kansas)
County of Sedgwick) SS

This is to certify that this plat has been filed for record in the Office of the Register of Deeds this _____ day of _____, 2019, at _____ o'clock ____M; and is duly recorded.

Tonya Buckingham, Register of Deeds

Kenly Zehring, Deputy

Reviewed in accordance with K.S.A. 58-2005 on this _____ day of _____, 2019.

Tricia L. Robello, L.S. #1246
Deputy County Surveyor
Sedgwick County, Kansas

State of Kansas)
County of Sedgwick) SS

Know all men by these presents, that we, the undersigned, have caused the land described in the surveyor's certificate to be platted into Lots and a Block to be known as the Leak Addition, Sedgwick County, Kansas. Any street dedications shown are dedicated to and for the use of the public. The access controls are hereby granted to the appropriate governing body as shown hereon. Reserve A shall be used for a private drive, utilities and signage. A drainage plan has been developed for the plat and that all drainage easements, rights-of-way, and reserves shall remain at established grades or as modified with the approval of the applicable City or County Engineer, and unobstructed to allow for the conveyance of stormwater in accordance with the Stormwater Manual. And further that the land contained herein is held and shall be conveyed subject to any applicable restrictions, reservations and covenants now on file or hereafter filed in the Office of the Register of Deeds of Sedgwick County, Kansas.

By: _____ Date _____
Michael and Janelle Leak, Owner

State of Kansas)
County of Sedgwick) SS

This instrument was acknowledged before me on this _____ day of _____, 2019, by Michael and Janelle Leak, Owners.

Notary Public

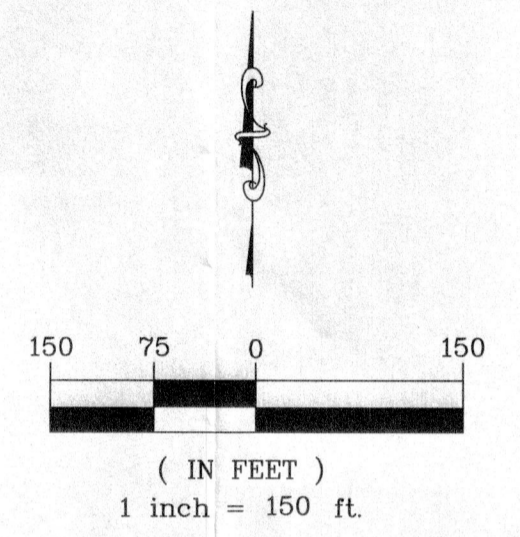
My Commission Expires: _____

18116193RD AND OLIVER BOUNDARY.dwg Prepared: 5/22/19

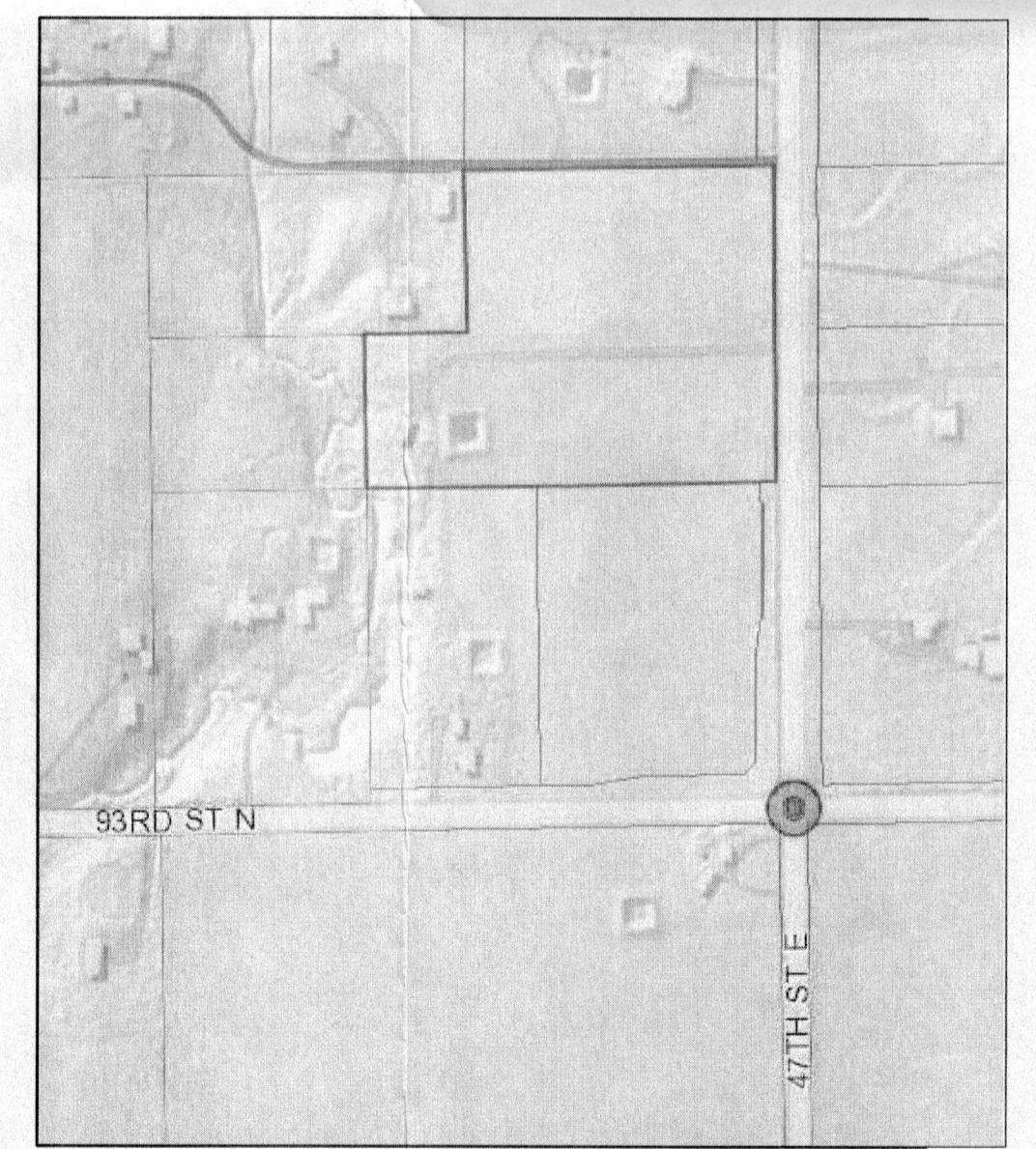


KEMILLER
ENGINEERING PA

117 E. Lewis, Wichita, KS 67202 (316)264-0242



- Legend**
- M Measured
 - D Deeded
 - 1/2" Rebar (found) Smith and Oakes
 - 5/8" Rebar (found) Garber
 - 3/4" Iron Pipe (found)
 - ⊗ 3/8" Rebar (found)
 - ⊕ 3/8" Rebar (set) KEMPA CLS # 157



Benchmark
Top of Rebar marking the SE corner of Leak Addition in Sedgwick County Kansas.
Elevation=1415.09 NAVD 88



S 1/4
Sec. 23, T25S, R1E
3/4" Iron Pipe (found)