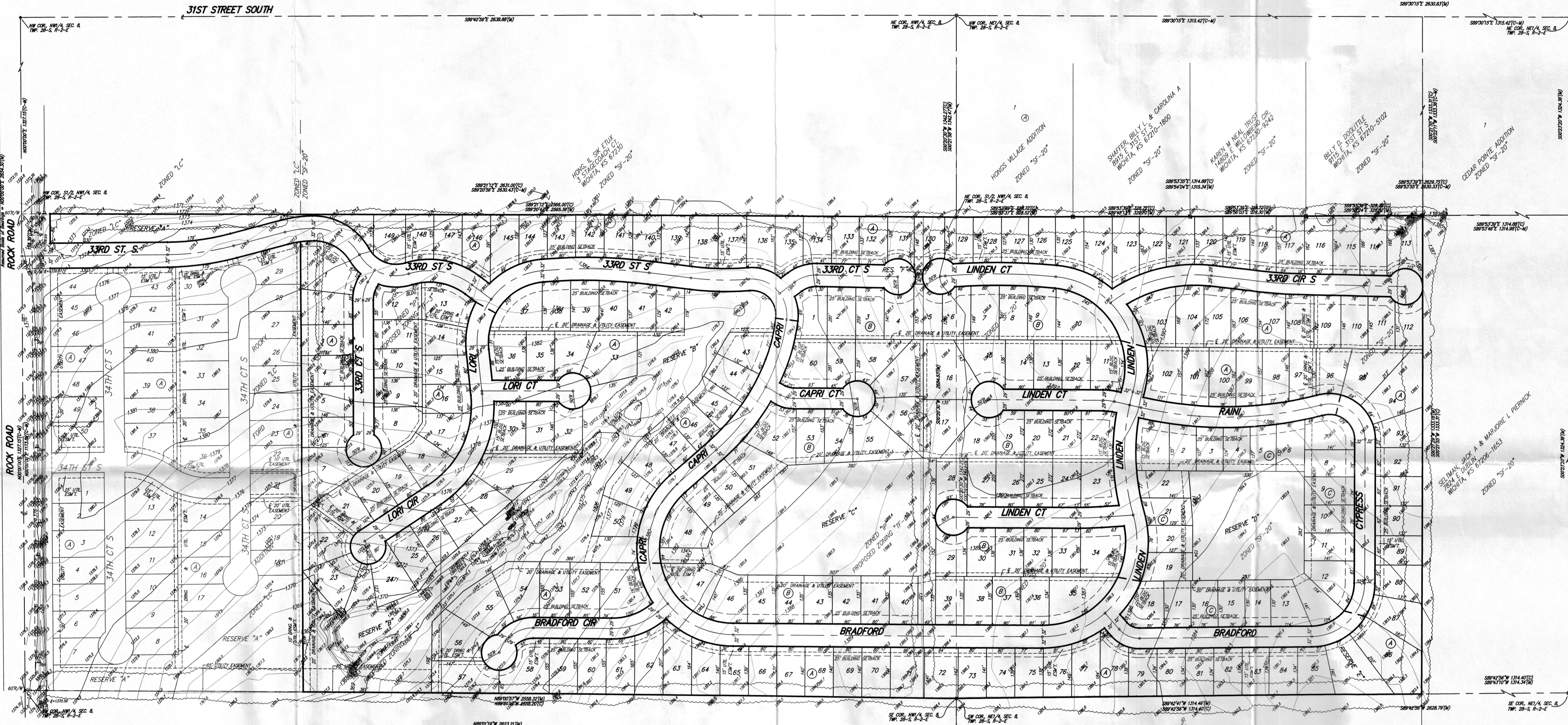
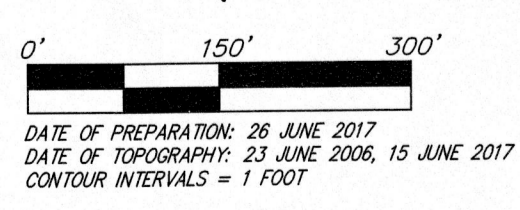
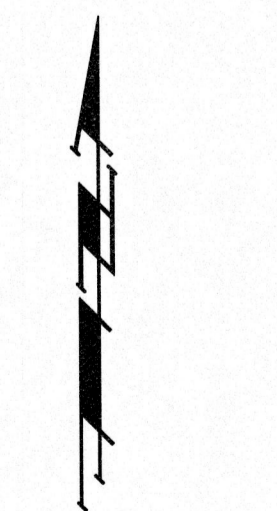


PRELIMINARY PLAT  
**ROCKY FORD 2ND ADDITION**  
 WICHITA, SEDGWICK COUNTY, KANSAS



PW&U-ENGINEERING 1-71  
 \*Julianne Kallman  
 Plat(s) for 7.13.17 Subdivision Mtg.

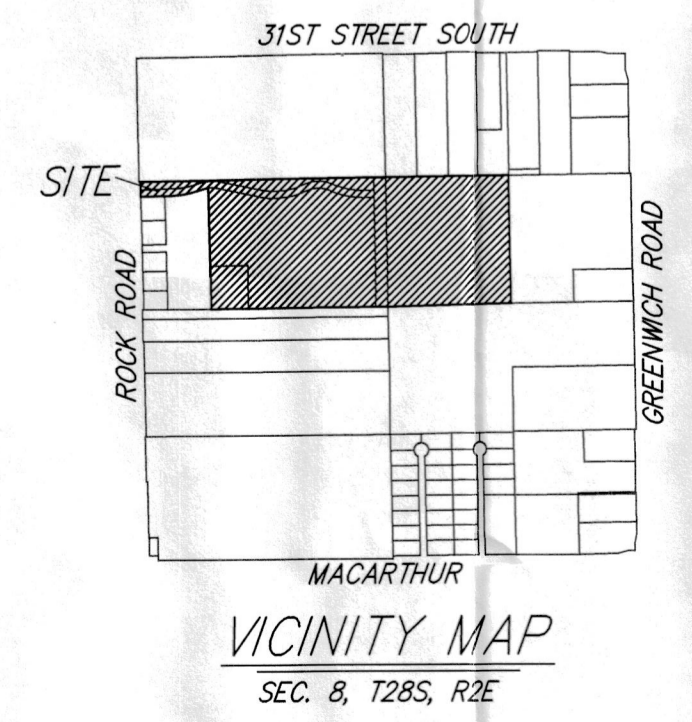


DATE OF PREPARATION: 26 JUNE 2017  
 DATE OF TOPOGRAPHY: 23 JUNE 2006, 15 JUNE 2017  
 CONTOUR INTERVALS = 1 FOOT

OWNER/CONTRACT PURCHASER:  
 31ST SOUTH ROCK INVESTMENTS, LLC  
 ATTN: JAY RUSSELL  
 PO BOX 78337  
 WICHITA, KS 67275

LEGAL DESCRIPTION:  
 LOT 7, BLOCK A, ROCKY FORD INDUSTRIAL PARK, SEDGWICK COUNTY, KANSAS, TOGETHER WITH RESERVE "A", RESERVE "B" AND RESERVE "C" AS PLATTED IN SAID ROCKY FORD INDUSTRIAL ADDITION, TOGETHER WITH THE EAST 118.50 FEET OF THE S1/2 OF THE NW1/4 OF SEC. 8, TWP. 28-S, R-2-E OF THE 6TH P.M., TOGETHER WITH THE SW1/4 OF THE NE1/4 OF SEC. 8, TWP. 28-S, R-2-E OF THE 6TH P.M. ALL BEING SUBJECT TO ROAD RIGHTS-OF-WAY OF RECORD.

BENCHMARK:  
 CITY OF WICHITA BENCHMARK DISK AT SOUTH END OF HUBGARD ON THE SW COR. OF R.C.B.C., WEST SIDE OF ROCK ROAD, 706' NORTH-NORTHWEST OF THE NORTHWEST CORNER OF LOT 44, BLOCK A, ROCKY FORD ADDITION. ELEV. = 1368.14 NAVD88



- = #4 REBAR W/ "BAUGHMAN" CAP (FOUND)
- = #5 REBAR (FOUND)
- = #4 REBAR (FOUND)
- = #5 REBAR W/ "MKEC" CAP (FOUND)
- △ = #4 REBAR W/ "MKEC" CAP (FOUND)
- ⊙ = 3/4" IRON PIPE W/ SEDGWICK CO. CAP (FOUND)
- = STONE (FOUND)
- = 1" IRON PIPE (FOUND)
- ⊗ = 1/2" IRON PIPE (FOUND)
- ⊙ = 3/4" IRON PIPE (FOUND)

FENCE LINE  
 GAS GAS GAS GAS GAS  
 GAS LINE

Sign = Sign  
 MB = Mailbox  
 PM = Pipeline Marker

RESERVE "A" IS RESERVED FOR OPEN SPACE, LANDSCAPING, DRAINAGE PURPOSES, BERMS, SIGNAGE, AND ENTRY MONUMENTS.

RESERVES "B", "C" AND "D" ARE RESERVED FOR OPEN SPACE, LAKES, LANDSCAPING, DRAINAGE PURPOSES, BERMS, WALKING PATHS AND UTILITIES AS CONFINED TO EASEMENTS.

RESERVE "E" IS RESERVED FOR OPEN SPACE, LANDSCAPING, DRAINAGE PURPOSES, AND UTILITIES AS CONFINED TO EASEMENTS.

RESERVE "F" IS RESERVED FOR OPEN SPACE, LANDSCAPING, EMERGENCY ACCESS, SIDEWALK, AND PEDESTRIAN ACCESS.

**ROCKY FORD 2ND ADDITION**

26 June 2017  
**Baughman Company, P.A.**  
 315 Ellis St. Wichita, KS 67211 P 316-262-7271 F 316-262-0149  
 ENGINEERING | SURVEYING | PLANNING | LANDSCAPE ARCHITECTURE

A:\Projects\Rocky Ford 2nd Addition\Plan Drawings\Rocky Ford 2nd Addition\_Plow.RXR