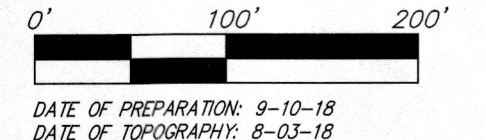
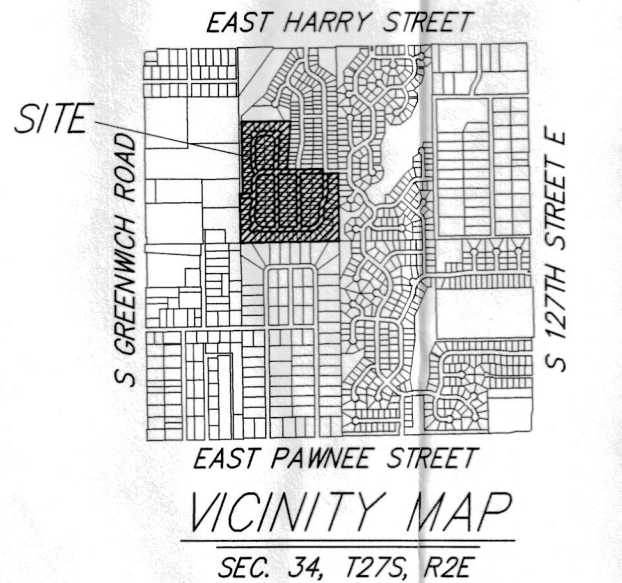
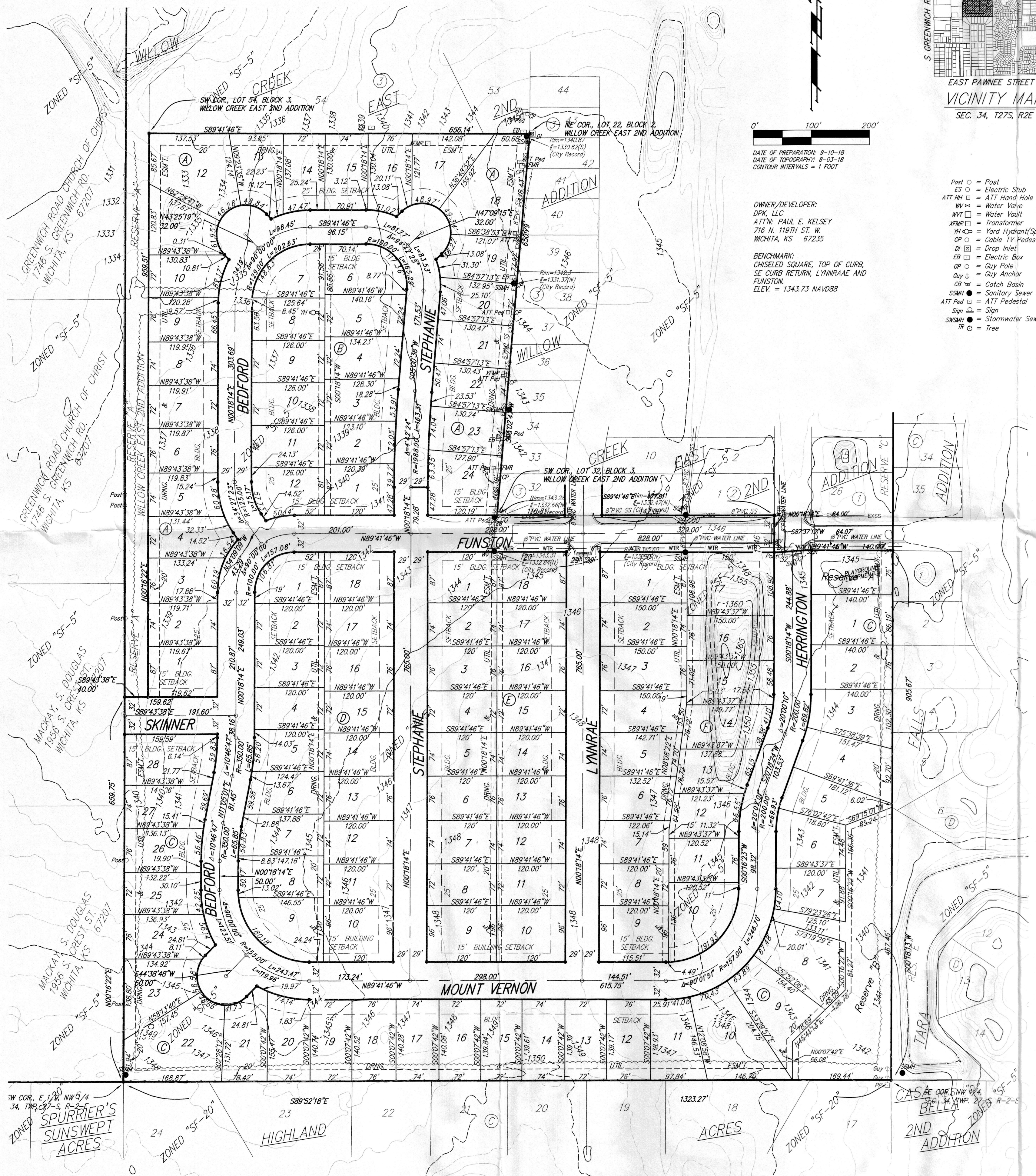


ONE STEP FINAL PLAT

WILLOW CREEK EAST 3RD ADDITION

WICHITA, SEDGWICK COUNTY, KANSAS

- GAS — GAS — GAS — Gas Line
 - OHE — OHE — OHE — Overhead Electric Line
 - UGE — UGE — UGE — Underground Electric Line
 - EXSS — EXSS — EXSS — Sanitary Sewer Line
 - SWS — SWS — SWS — Stormwater Sewer Line
 - TEL — TEL — TEL — Telephone Line
 - WTR — WTR — WTR — Water Line
 - FENCE — FENCE — FENCE — Fence Line
- = #4 REBAR W/ "BAUGHMAN" CAP (SET)
 - = 1/2" IRON PIPE (FOUND)(ORIGIN UNKNOWN)
 - = #4 REBAR (FOUND)(ORIGIN UNKNOWN)
 - = #4 REBAR W/ ALUMINUM CAP (FOUND)(ORIGIN UNKNOWN)
 - = #5 REBAR (FOUND)(ORIGIN UNKNOWN)



DATE OF PREPARATION: 9-10-18
 DATE OF TOPOGRAPHY: 9-03-18
 CONTOUR INTERVALS = 1 FOOT

OWNER/DEVELOPER:
 DPK, LLC
 ATTN: PAUL E. KELSEY
 716 N. 119TH ST. W.
 WICHITA, KS 67235

BENCHMARK:
 CHASED SQUARE, TOP OF CURB,
 SE CURB RETURN, LYNRAE AND
 FUNSTON.
 ELEV. = 1343.73 NAVD88

- Post ○ = Post
- ES ○ = Electric Stub
- ATT HW ○ = ATT Hand Hole
- WV ○ = Water Valve
- WVF ○ = Water Vault
- TRM ○ = Transformer
- YH ○ = Yard Hydrant(Spigot)
- CP ○ = Cable TV Pedestal
- DI ○ = Drop Inlet
- EB ○ = Electric Box
- GP ○ = Guy Pole
- GA ○ = Guy Anchor
- CB ○ = Catch Basin
- SSM ○ = Sanitary Sewer Manhole
- ATT Ped ○ = ATT Pedestal
- Sign ○ = Sign
- SSM ○ = Stormwater Sewer Manhole
- TR ○ = Tree

State of Kansas) SS We, Baughman Company, P.A., Surveyors in
 Sedgwick County) the above described county and state do hereby certify that we have surveyed and
 platted "WILLOW CREEK EAST 3RD ADDITION", Wichita, Sedgwick County, Kansas and that the accompanying plat is a true and correct exhibit of
 the property surveyed, described as All of Lots 1, 2, 3, 4, 5, 6, 7, 8, 9,
 10, 11, 12, 13, 14, 15, 16, 17, 18, 19, 20, 21, 22, 23, 24, 25, 26, 27, 28,
 29, 30, and 31, Block 3, TOGETHER with all of Lots 1, 2, 3, 4, 5, 6, 7, 8,
 9, 10, 11, 12, 13, and 14, Block 4, TOGETHER with all of Lots 1, 2, 3, 4,
 5, 6, 7, 8, 9, 10, 11, 12, 13, 14, 15, 16, 17, 18, 19, 20, 21, 22, 23, 24,
 25, 26, 27, 28, 29, 30, 31, 32, 33, and 34, Block 5, TOGETHER with all
 of Lots 1, 2, 3, 4, 5, 6, 7, 8, 9, 10, 11, 12, 13, 14, 15, 16, 17, 18, 19,
 20, 21, 22, 23, and 24, Block 6, TOGETHER with all of Lots 1, 2, 3, 4, 5,
 6, 7, 8, 9, 10, 11, 12, 13, 14, 15, 16, 17, 18, 19, 20, 21, 22, 23, and 24,
 Block 7, TOGETHER with all of Lots 1, 2, 3, 4, 5, 6, 7, 8, 9, 10, 11, 12,
 13, 14, 15, 16, 17, 18, 19, 20, 21, 22, and 23, Block 8, TOGETHER with all
 of Reserve "B", TOGETHER with all of Bedford, Stephanie, Herrington, and
 Mt. Vernon, all as platted and dedicated in Willow Creek East 2nd Addition,
 Wichita, Sedgwick County, Kansas, TOGETHER with that part of Reserve "A"
 as dedicated in said Willow Creek East 2nd Addition lying south and of
 abutting the following described line: Beginning at the northwest corner
 of Lot 16 in said Block 3; thence N89°41'46"W along the westerly
 prolongation of the north line of Lot 16 in said Block 3, 40.00 feet to a
 point on the west line of said Reserve "A", and for a point of termination,
 TOGETHER with that part of Lynnrae as dedicated in said Willow Creek
 East 2nd Addition lying south of and abutting the following described line:
 Beginning at the northeast corner of Lot 24 in said Block 7; thence
 S89°41'46"E, 58.00 feet to the northwest corner of Lot 1 in said Block 8,
 and for a point of termination, and TOGETHER with that part of Funston
 as dedicated in said Willow Creek East 2nd Addition lying west of and
 abutting the following described line: Beginning at the northeast corner
 of Lot 1 in said Block 7; thence N00°28'26"E, 64.00 feet to the
 southeast corner of Lot 31 in said Block 3, and for a point of termination.

Existing public easements, building setbacks,
 access controls, and dedications, if any,
 being vacated by virtue of K.S.A. 12-512b, as amended.
 All being situated in the Northwest Quarter of Section
 34, Township 27 South, Range 2 East of the Sixth
 Principal Meridian, Sedgwick County, Kansas.

Baughman Company, P.A.

Michael G. Conrey, Surveyor

Know all men by these presents that we,
 the undersigned, have caused the land in the surveys certificate to be
 platted into Lots, Blocks, Streets and Reserves, to be known as "WILLOW
 CREEK EAST 3RD ADDITION", Wichita, Sedgwick County, Kansas. The utility
 easements are hereby granted as indicated for the construction and
 maintenance of all public utilities. The drainage easements are hereby
 granted as indicated for drainage purposes and for the construction and
 maintenance of all public utilities. The drainage and utility easements are
 hereby granted as indicated for drainage purposes and for the construction
 and maintenance of all public utilities. No signs, light poles, private
 drainage systems, masonry trash enclosures or other structures shall be
 located within public utility easements unless permitted by the Public
 Works Department of the appropriate governing body. The streets are
 hereby dedicated to and for the use of the public. Reserve "A" is hereby
 reserved for open space, landscaping, irrigation, berms, drainage purposes,
 sidewalks, gazebos, a playground and playground equipment, and utilities
 as confined to easements. Reserve "B" is hereby reserved for open space,
 landscaping, drainage purposes, berms, sidewalks, lakes, and utilities as
 confined to easements. Reserves "A" and "B" shall be owned and
 maintained by the homeowners association for the addition. The Minimum
 Building Pad Elevations for the lowest opening to the structures shall be
 as indicated on the face of the plat.

DPK, LLC,
 a Kansas limited liability company

Paul E. Kelsey, Member

State of Kansas) SS The foregoing instrument acknowledged before
 Sedgwick County) me, this ____ day of _____, 2018, by Paul E. Kelsey, Member of
 DPK, LLC, a Kansas limited liability company, on behalf of the limited
 liability company.

_____, Notary Public

My App't. Exp. _____

We, the undersigned holders of a mortgage on the
 above described property, do hereby consent to this plat of "WILLOW
 CREEK EAST 3RD ADDITION", Wichita, Sedgwick County, Kansas.

Legacy Bank

State of Kansas) SS The foregoing instrument acknowledged before
 Sedgwick County) me, this ____ day of _____, 2018, by _____
 of Legacy Bank, on behalf of the bank.

_____, Notary Public

My App't. Exp. _____

This plat of "WILLOW CREEK EAST 3RD
 ADDITION", Wichita, Sedgwick County, Kansas has been submitted to and
 approved by the Wichita-Sedgwick County Metropolitan Area Planning
 Commission, Wichita, Kansas.

Dated this ____ day of _____, 2018,
 Wichita-Sedgwick County Metropolitan Area Planning Commission

Joseph A. Johnson, Chairman

Dale Miller, Secretary

This plat approved and all dedications
 shown hereon accepted by the City Council of the City of Wichita,
 Kansas, this ____ day of _____, 2018.

Jeff Longwell, Mayor,
 City of Wichita

Karen Sublett, City Clerk

Reviewed in accordance with K.S.A. 58-2005
 on this ____ day of _____, 2018.

Tricia L. Robello, P.S. #1246
 Deputy County Surveyor
 Sedgwick County, Kansas

Entered on transfer record this ____ day
 of _____, 2018.

Kelly B. Arnold, County Clerk

State of Kansas) SS This is to certify that this plat has been
 Sedgwick County) filed for record in the office of the Register of Deeds, this ____ day
 of _____, 2018 at ____ o'clock ____ M.; and is duly recorded.

Tonya Buckingham, Register of Deeds

Judy J. Paget, Deputy

WILLOW CREEK EAST 3RD ADDITION

Baughman Company, P.A.
 315 Ellis St. Wichita, KS 67211 P 316-262-7271 F 316-262-0149
 Baughman ENGINEERING | SURVEYING | PLANNING | LANDSCAPE ARCHITECTURE