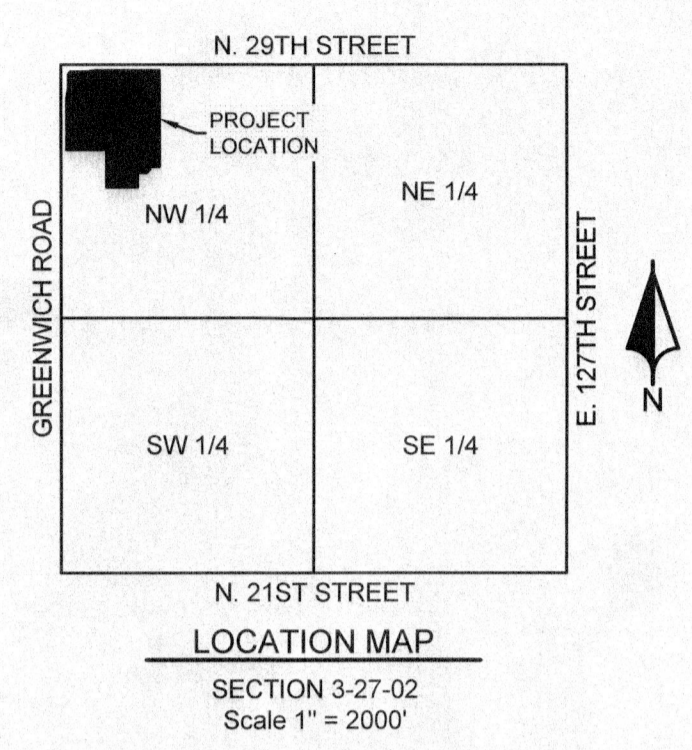
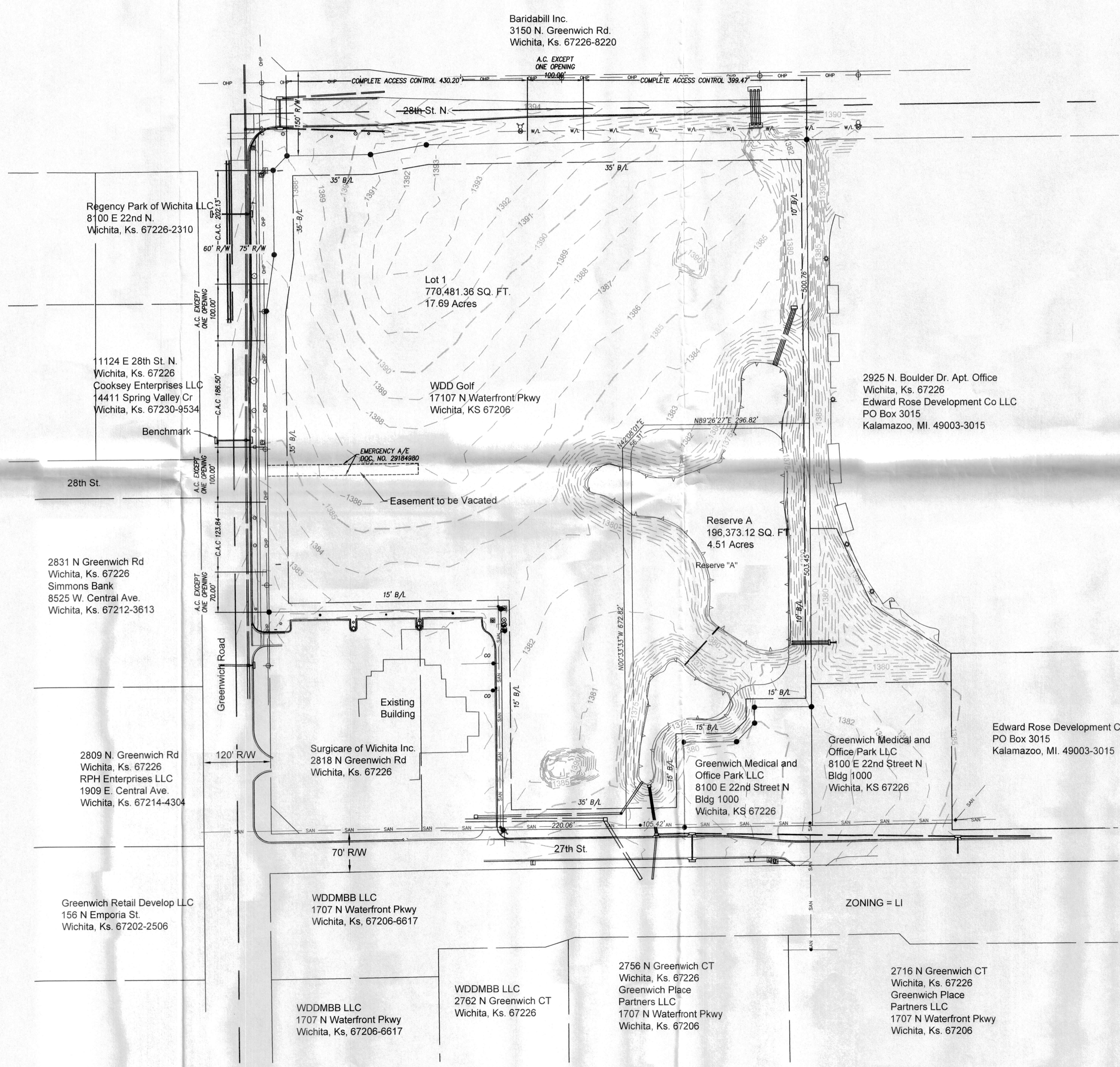


# One-Step Final Plat For SG ADDITION

City of Wichita, Sedgwick County, Kansas  
S03, T27S, R02E



Preliminary Plat  
19-0110  
WDD SWING  
Wichita, Sedgwick County, Kansas

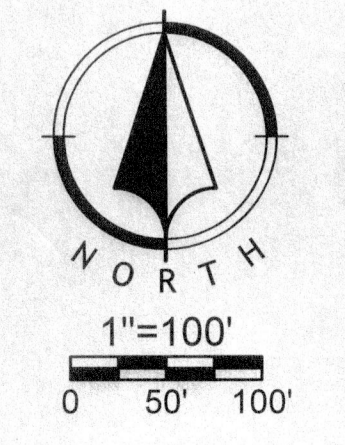
Existing Conditions

NO.	BY	DATE	REVISION
1	TUA	02/20/19	Preliminary Plat
2	DBB	02/20/19	REVISION

Land Surveyor  
Brent Thompson, PLS  
132 Abbie Ave.  
Kansas City, KS 66103

Benchmark Description  
A Benchmark was Found as a Square Cut on the Northwest Corner of a Curb Inlet Located Approximately 60 feet North of the Northwest Corner of Greenwich Road and 28th Street.  
Elev.: 1384.56

Topographic Survey Date:  
09/27/2019



**Renaissance Infrastructure Consulting**

913.317.9500  
WWW.RIC-CONSULT.COM

132 ABBIE AVENUE  
KANSAS CITY, KANSAS 66103

KS Certificate of Authority: E-1814