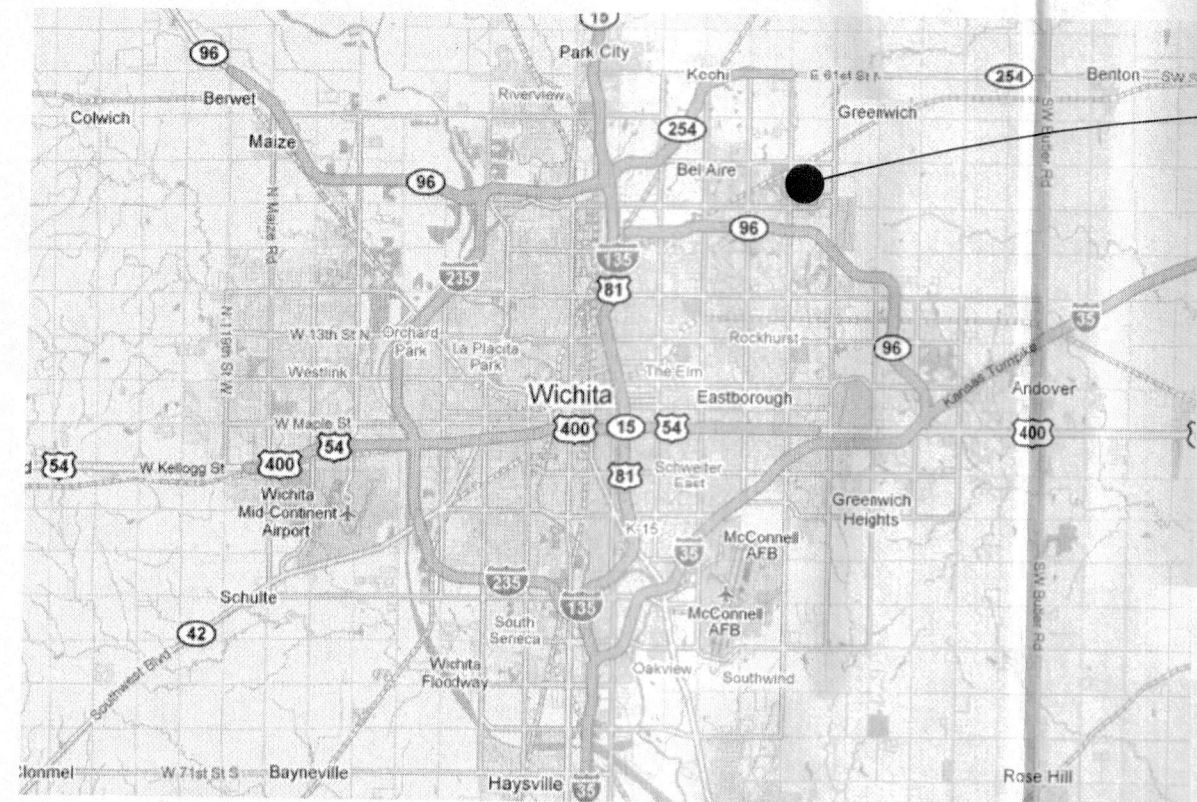
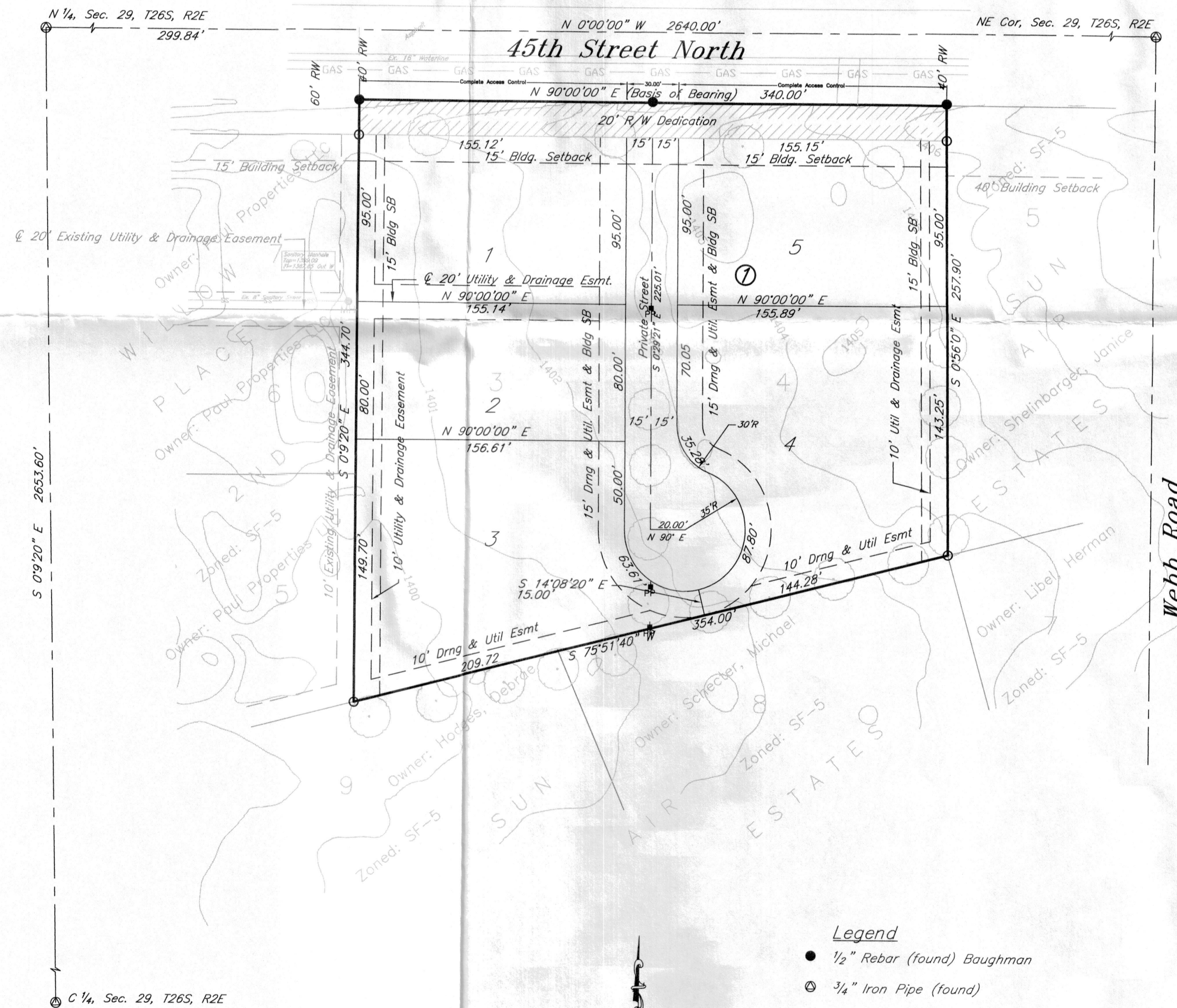


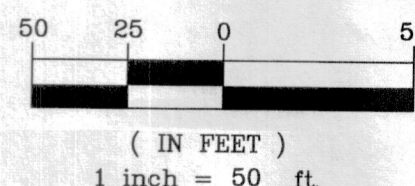
*One-Step Final Plat  
Sun-Air Estates, 2nd Addition  
A Replat of Part of Sun-Air Estates  
Wichita, Sedgwick County, Kansas*



VICINITY MAP



- Legend**
- 1/2" Rebar (found) Baughman
  - ⊙ 3/4" Iron Pipe (found)
  - ⊙ 3/8" Rebar (set) KEMPA CLS #157



**Benchmark:**  
0.5 miles east of Rock Road on  
37th Street North COW Bench  
Mark. South side of 37th St., on  
the northeast corner of the  
base for railroad signal.  
Elevation=1412.42 NAVD 88

State of Kansas )  
County of Sedgwick ) SS

I, Bradley C. Ward, a licensed land surveyor of the State of Kansas, do hereby certify that the following described tract of land was surveyed on this 20th day of June, 2016 and the accompanying final plat prepared and that all the monuments shown herein actually exist and their positions are correctly shown to the best of my knowledge and belief.

**LEGAL DESCRIPTION**  
Lots 3 & 4 of Sun-Air Estates, Sedgwick County, Kansas

All easements and rights-of-way within said tract are hereby vacated by virtue of KSA 12-312b amended.

Bradley C. Ward, L.S. #920

State of Kansas )  
County of Sedgwick ) SS

Know all men by these presents, that we, the undersigned, have caused the land described in the surveyor's certificate to be platted into Lots, Blocks, and Streets to be known as Sun-Air Estates, 2nd Addition, Wichita, Sedgwick County, Kansas. Any street dedications shown are dedicated to and for the use of the public. The drainage and utility easements are hereby granted as indicated for drainage purposes and for the construction and maintenance of all public utilities. The access controls are hereby granted to the appropriate governing body as shown hereon. A drainage plan has been developed for the plat and that all drainage easements, rights-of-way, or reserves shall remain at established grades or as modified with the approval of the applicable City or County Engineer, and unobstructed to allow for the conveyance of stormwater. And further that the land contained herein is held and shall be conveyed subject to any applicable restrictions, reservations and covenants now on file or hereafter filed in the Office of the Register of Deeds of Sedgwick County, Kansas. All abutter's right of access to and from 45th Street is hereby granted to the appropriate governing body as shown on the plat.

By: Musa Nyang, Manager date  
Quality Unique Individualized Care, LLC

State of Kansas )  
County of Sedgwick )

This instrument was acknowledged before me on this \_\_\_\_\_ day of \_\_\_\_\_, 2016, Quality Unique Individualized Care, LLC, Musa Nyang, Manager.

Notary Public  
My Commission Expires: \_\_\_\_\_

State of Kansas )  
City of Wichita ) SS

This plat of Sun-Air Estates, 2nd Addition, Wichita, Sedgwick County, Kansas, has been submitted to and approved by the Wichita-Sedgwick County Metropolitan Area Planning Commission, Wichita, Kansas. Dated this \_\_\_\_\_ day of \_\_\_\_\_, 2016.  
Wichita-Sedgwick County Metropolitan Area Planning Commission.

Carol Chapman Neugent, Chair

Dale Miller, Secretary

State of Kansas )  
City of Wichita ) SS

This plat approved and all dedications shown hereon accepted by the City Council of the City of Wichita, Kansas, this \_\_\_\_\_ day of \_\_\_\_\_, 2016.

At the Direction of the City Council

Jeff Longwell, Mayor

Karen Sublett, City Clerk

Entered on transfer record this \_\_\_\_\_ day of \_\_\_\_\_, 2016.

Kelly B. Arnold, County Clerk

State of Kansas )  
County of Sedgwick ) SS

This is to certify that this plat has been filed for record in the Office of the Register of Deeds this \_\_\_\_\_ day of \_\_\_\_\_, 2016, at \_\_\_\_\_ o'clock \_\_\_\_\_ M, and is duly recorded.

Tonya Buckingham, Register of Deeds

Judy J. Paget, Deputy

Reviewed in accordance with K.S.A. 58-2005 on this \_\_\_\_\_ day of \_\_\_\_\_, 2016.

Tricia L. Robello, L.S. #1246  
Deputy County Surveyor  
Sedgwick County, Kansas

16080 Sun-Air Estates, 2nd Addition prepared: 6-22-2016

**KEMILLER**  
ENGINEERING PA  
117 E. Lewis, Wichita, KS 67202 (316)264-0242