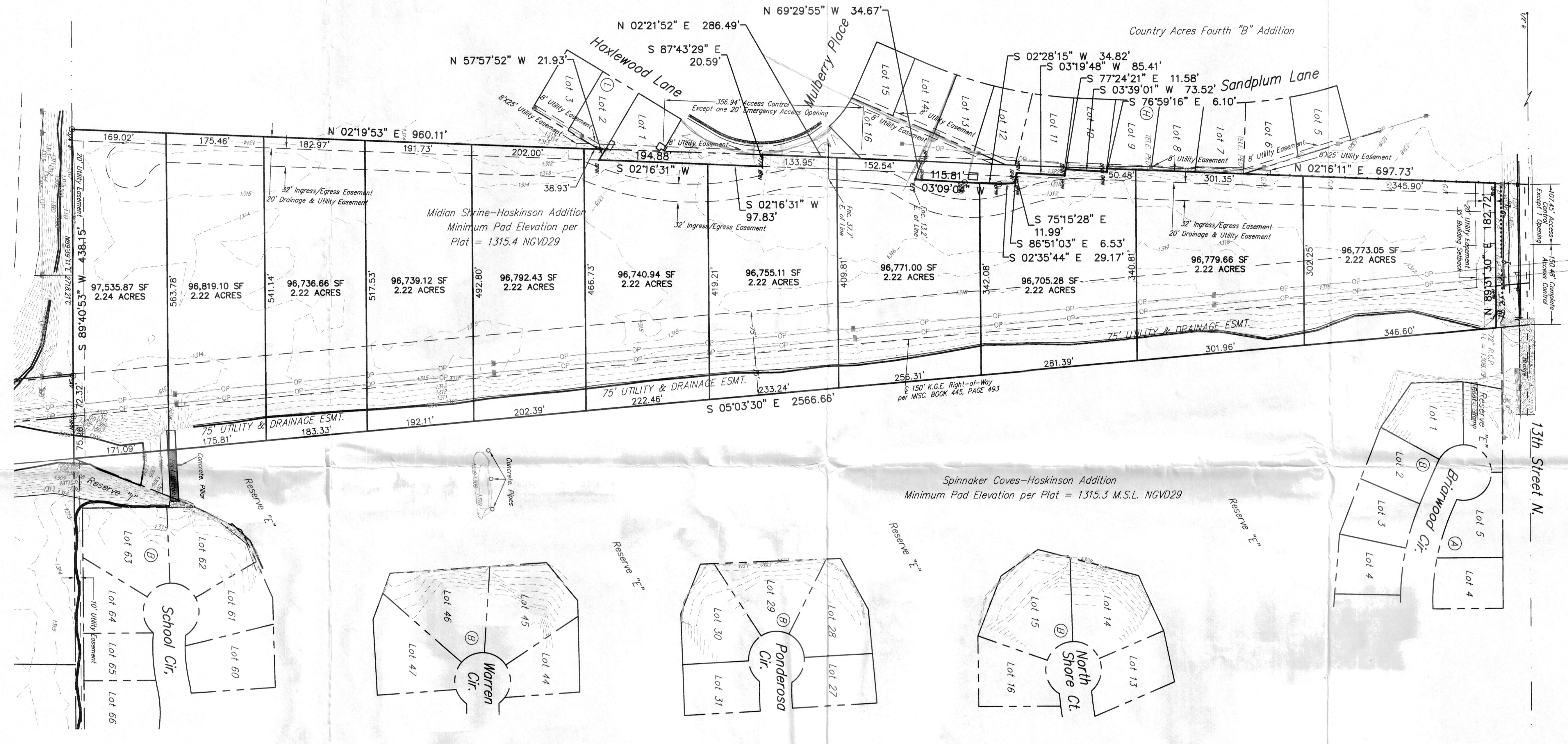


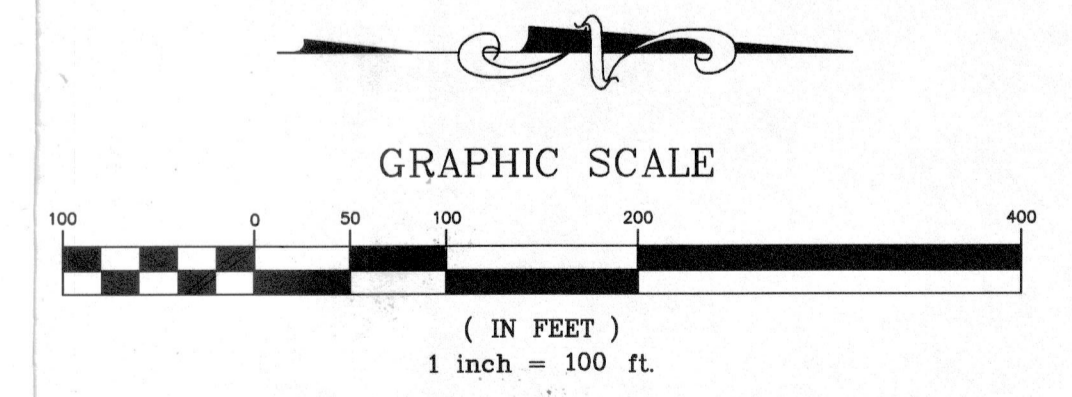
VAL
 Firm 806
 P# 1562
 Ord 35-057

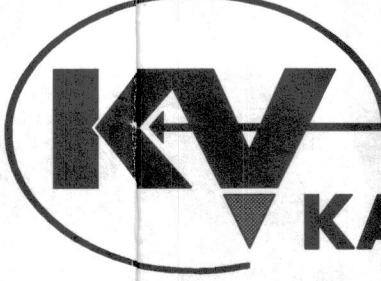
SKETCH PLAT

TRANQUILITY BAY
 WICHITA, SEDGWICK COUNTY, KANSAS



Spinner Cove-Hoskinson Addition
 Minimum Pad Elevation per Plat = 1315.3 M.S.L. NGVD29



 KAW VALLEY ENGINEERING	200 N. EMPORIA, SUITE 100 WICHITA, KANSAS 67202 PH. (316) 440-4304 FAX (316) 440-4309 wh@kvang.com www.kvang.com		PROJECT NO. DRAWN BY CHECKED BY CFN SHEET
			MLT TRA PRLM 1 OF 1
	PREPARED FOR:		KAW VALLEY ENGINEERING, INC. IS AUTHORIZED TO OFFER SURVEYING SERVICES BY KANSAS STATE CERTIFICATE OF AUTHORIZATION NO. LS-20. EXPIRES 12/31/16

THIS DRAWING SHALL NOT BE UTILIZED BY ANY PERSON, FIRM, OR CORPORATION IN WHOLE OR IN PART WITHOUT THE SPECIFIC PERMISSION OF KAW VALLEY ENGINEERING, INC.