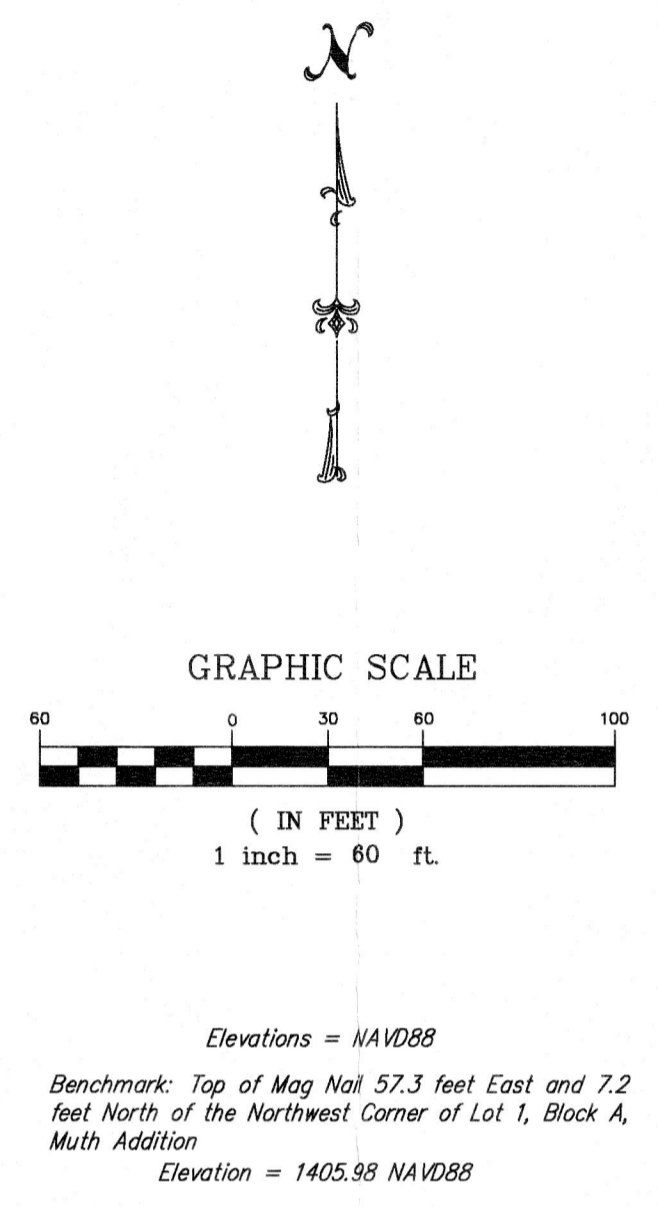
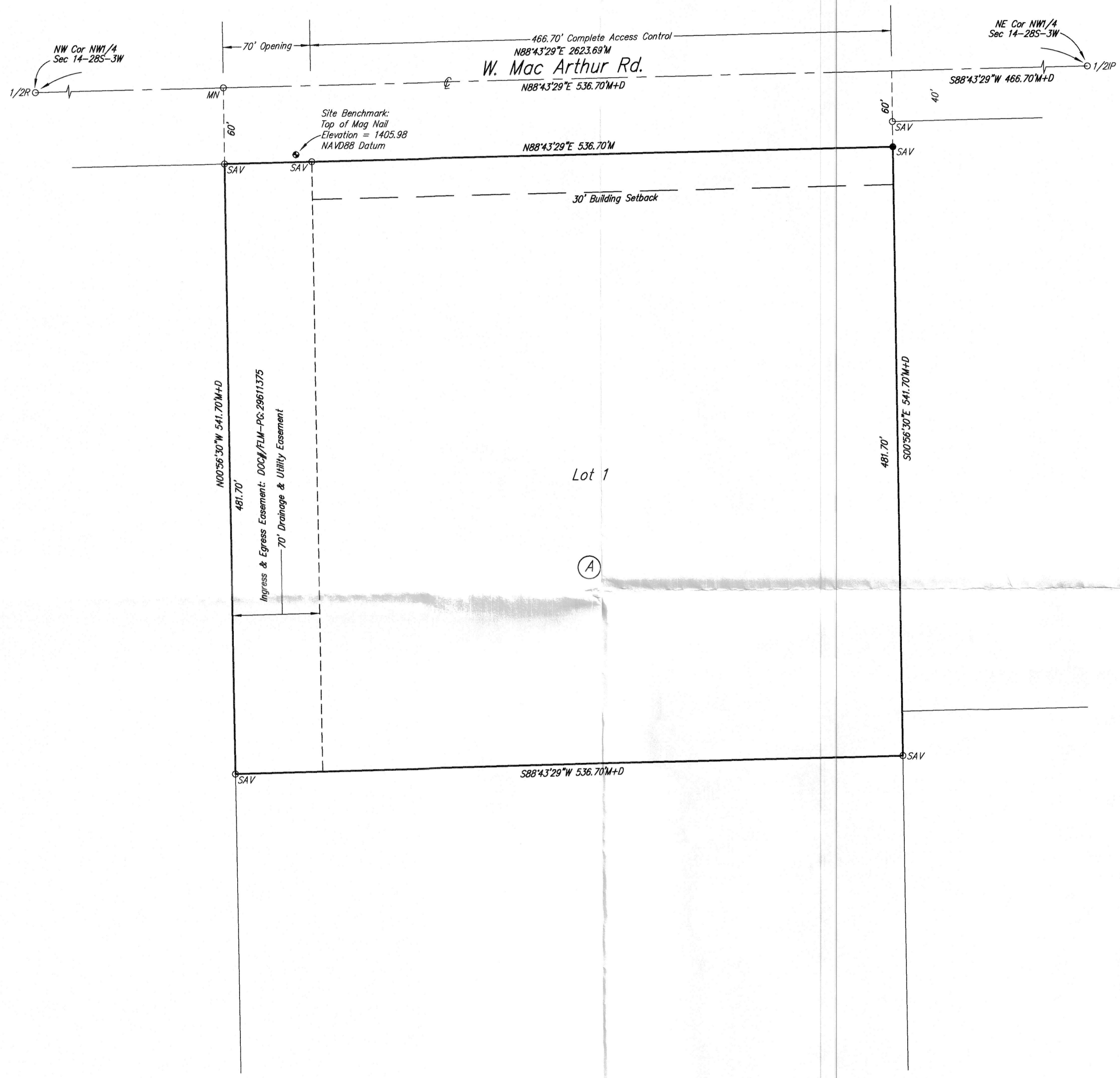


MUTH ACRES

AN ADDITION TO SEDGWICK COUNTY, KANSAS



State of Kansas) SS
Sedgwick County)

We, Savoy Company, P.A., Surveyors in aforesaid county and state do hereby certify that, under the supervision of the undersigned, we have surveyed and platted "Muth Acres", an Addition to Sedgwick County, Kansas and that the accompanying plat is a true and correct exhibit of the property surveyed, described as follows:

That part of the NW1/4 of Section 14, Township 28 South, Range 3 West of the 6th P.M., Sedgwick County, Kansas, Commencing at the N.E. Corner of said NW1/4; thence S88°43'29"W, along the North line of said NW1/4, 466.70 feet to the Point of Beginning; thence S00°56'30"E, 541.70 feet; thence S88°43'29"W, 536.70 feet; thence N00°56'30"E, 541.70 feet to the North line of said NW1/4; thence N88°43'29"E, along the North line of said NW1/4, 536.70 feet to the Point of Beginning.

All Public easements and dedications being vacated by virtue of K.S.A. 12-512b, as amended.

Date: _____
Savoy Company, P.A.
Mark A. Savoy PS #788 Surveyor

Know all men by these presents that we, the undersigned, have caused the land described in the surveyors certificate to be platted into a Lot, Block and Street to be known as "Muth Acres", an Addition to Sedgwick County, Kansas. The street is hereby dedicated to and for the use of the public. The drainage and utility easement is hereby granted to the public as indicated for drainage purposes and for the construction and maintenance of all public utilities. Access Controls are hereby granted to the appropriate governing body as indicated on the face of the plat.

Jeremy R. Muth Christiane M. Muth

State of Kansas) SS
Sedgwick County)
The foregoing instrument acknowledged before me, this _____ day of _____, 2020, by Jeremy R. Muth and Christiane M. Muth, husband and wife.

My App't. Exp _____ Notary Public

This plat of "Muth Acres", an Addition to Sedgwick County, Kansas has been submitted to and approved by the Wichita-Sedgwick County Metropolitan Area Planning Commission, Wichita, Kansas.
Dated this _____ day of _____, 2020.

Wichita-Sedgwick County Metropolitan Area Planning Commission

Chair
Charles A. Warren

Secretary
Scott A. Wadle

This plat approved and all dedications shown hereon, are hereby accepted by the Board of County Commissioners, Sedgwick County, Kansas, this _____ day of _____, 2020.

Chairman
Peter F. Meitzner, First District

County Clerk
Kelly B. Arnold

Reviewed in accordance with K.S.A. 58-2005 on this _____ day of _____, 2020.

Deputy County Surveyor
Sedgwick County, Kansas
Tricia L. Robello PS #1246

Entered on transfer record this _____ day of _____, 2020.

County Clerk
Kelly B. Arnold

State of Kansas) SS
Sedgwick County)
This is to certify that this plat has been filed for record in the office of the Register of Deeds, this _____ day of _____, 2020, at _____ o'clock _____ M. and is duly recorded.

Register of Deeds
Tonya Buckingham

Deputy
Kenly Zehring

