

OWNER'S CERTIFICATE AND DEDICATION

Know all men by these presents that we, the undersigned, have caused the land in the surveyors certificate to be platted into a Lot, Block, and Streets, to be known as "MULTIMODAL FACILITY ADDITION", Wichita, Sedgwick County, Kansas. The utility easements are hereby granted to the public as indicated for the construction and maintenance of all public utilities. No signs, light poles, private drainage systems, masonry fences, masonry trash enclosures or other structures shall be located within public utility easements unless a Use of Easement Permit is obtained from the City of Wichita Public Works & Utilities Department. The streets are hereby dedicated to and for the use of the public.

Brandon J. Whipple, Mayor, City of Wichita

NOTARY CERTIFICATE

State of Kansas, County of Sedgwick, SS ) This instrument was acknowledged before me on this \_\_\_ day of \_\_\_, 2022, by Brandon J. Whipple, Mayor of the City of Wichita, Kansas, a municipal corporation. Seal or stamp \_\_\_, Notary Public

My commission expires: \_\_\_\_\_

PLANNING COMMISSION CERTIFICATE

This plat of "MULTIMODAL FACILITY ADDITION" has been submitted to and approved by the Wichita-Sedgwick County Metropolitan Area Planning Commission, Wichita, Kansas.

Dated this \_\_\_ day of \_\_\_, \_\_\_. Wichita-Sedgwick County Metropolitan Area Planning Commission

By William M. Johnson, Chairman

ATTEST: Scott A. Wadle, Secretary

GOVERNING BODY CERTIFICATE

This plat approved and all dedications shown hereon, if any, accepted by the City Council of the City of Wichita, Kansas, this \_\_\_ day of \_\_\_, \_\_\_. At the Direction of the City Council

Brandon J. Whipple, Mayor, City of Wichita

ATTEST: Karen Sublett, City Clerk

COUNTY CLERK TRANSFER RECORD

Entered on transfer record this \_\_\_ day of \_\_\_, \_\_\_. Kelly B. Arnold, County Clerk

REGISTER OF DEEDS' CERTIFICATE

State of Kansas, County of Sedgwick, SS) This is to certify that this instrument was filed for record in the Register of Deeds Office, at \_\_\_ a.m. - p.m., on the \_\_\_ day of \_\_\_, \_\_\_. Toyna Buckingham, Register of Deeds

Kenly Zehring, Deputy

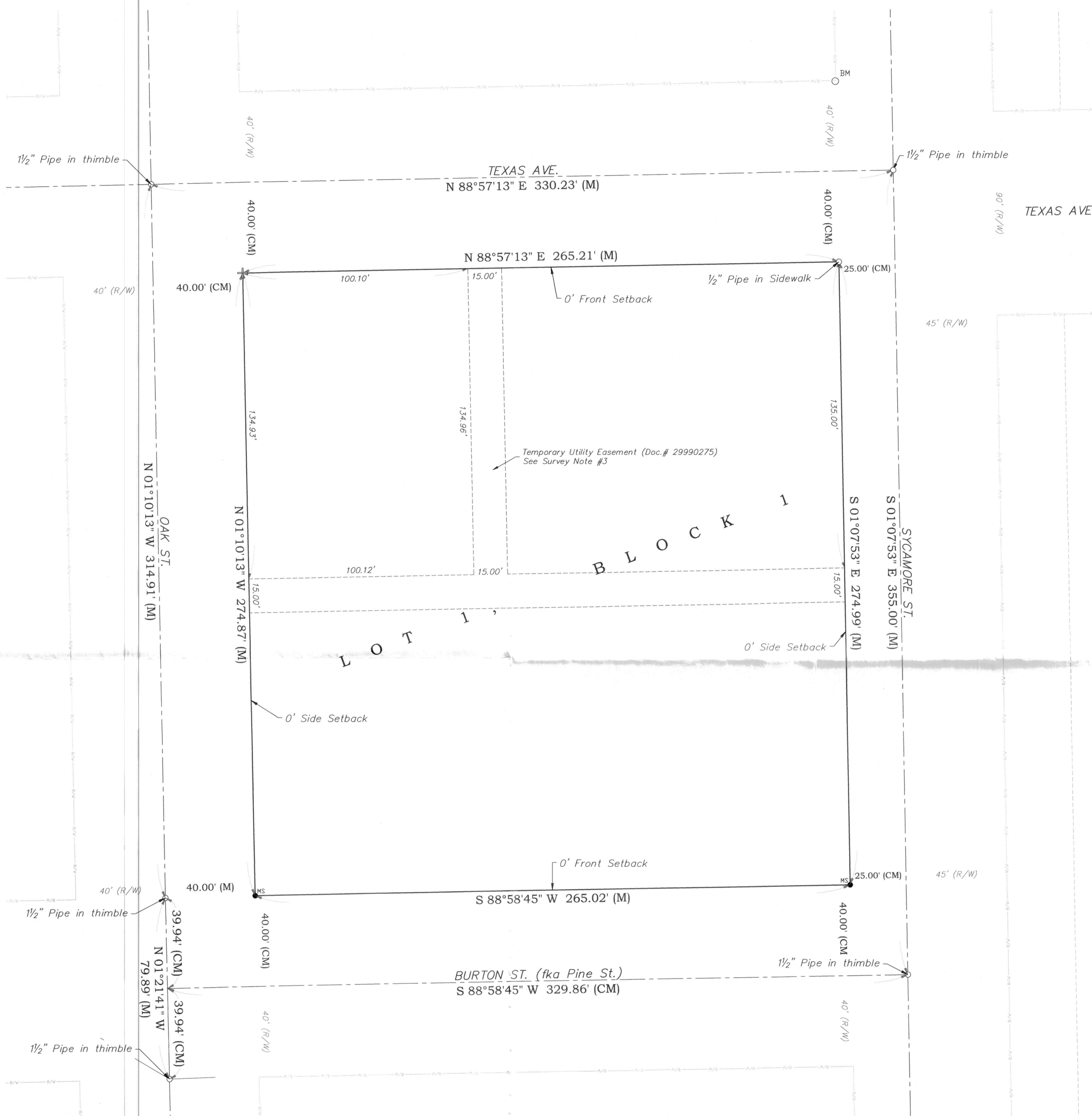
1641 N. Andover Rd. Andover, KS 67002



P:316-425-7770 F:316-425-7773

PROJECT NUMBER 21-05-157 SHEET 1 OF 1

MULTIMODAL FACILITY ADDITION WICHITA, SEDGWICK COUNTY, KANSAS



SURVEYOR'S CERTIFICATE AND DESCRIPTION

State of Kansas, County of Sedgwick, SS) We, Merestone Surveying LLC, Surveyors in aforesaid county and state do hereby certify that we have surveyed and platted "MULTIMODAL FACILITY ADDITION", Wichita, Sedgwick County, Kansas and that the accompanying plat is a true and correct exhibit of the property surveyed, described as

Parcel 1: Lots 2, 4, 6, 8 and 10, on Burton Street, McKee's Resurvey of Lots 90, 92, 94, 96, 98 and 100, on Texas Avenue, and Lots 2, 4, 6, 8 and 10, on Oak Street, Sedgwick County, Kansas, together with the South half of the vacated alley adjacent on the North.

Parcel 2: Lots 91, 93, 95, 97 and 99, Pine, now Burton Street, West Wichita Addition, Sedgwick County, Kansas, together with the South half of the vacated alley adjacent on the North.

Parcel 3: Lot 1, on Sycamore Avenue, in McKee's Resurvey of Lots 90, 92, 94, 96, 98 and 100, on Texas Avenue, and Lots 2, 4, 6, 8 and 10, on Oak Street, West Wichita, Sedgwick County, Kansas, together with the East half of the vacated alley adjacent on the West, and the North Half of the vacated alley adjacent on the South.

Parcel 4: Lot 3, Sycamore Street, McKee's Resurvey of Lots 90, 92, 94, 96, 98, 100, Texas Avenue and Lots 2, 4, 6, 8, 10, Oak Street, West Wichita, Sedgwick County, Kansas; together with the East Half of the vacated alley adjacent on the West.

Parcel 5: Lot 5, EXCEPT the West 65 feet thereof, Sycamore Street, McKee's Resurvey of Lots 90, 92, 94, 96, 98, 100, Texas Avenue and Lots 2, 4, 6, 8, 10, Oak Street, West Wichita, Sedgwick County, Kansas.

Parcel 6: The West 65 feet Lot 5, Sycamore Street, McKee's Resurvey of Lots 90, 92, 94, 96, 98, 100, Texas Avenue and Lots 2, 4, 6, 8, 10, Oak Street, West Wichita, Sedgwick County, Kansas; together with the East Half of the vacated alley adjacent on the West.

Parcel 7: Lots 86 and 88, Texas Avenue, West Wichita, Sedgwick County, Kansas, together with the West half of the vacated alley adjacent on the East, and the North Half of the vacated alley adjacent on the South.

Parcel 8: Lots 82 and 84, on Texas Avenue, West Wichita, Sedgwick County, Kansas, together with the North half of the vacated alley adjacent on the South.

All being situated in the Southwest Quarter of Section 20, Township 27 South, Range 1 East of the 6th P.M., Sedgwick County, Kansas.

Existing public easements and dedications being vacated by virtue of K.S.A. 12-512b, as amended.

Todd P. Hornbaker, P.S. #1532 Merestone Surveying LLC, (CLS-179) 1641 N. Andover Rd. Andover, KS 67002

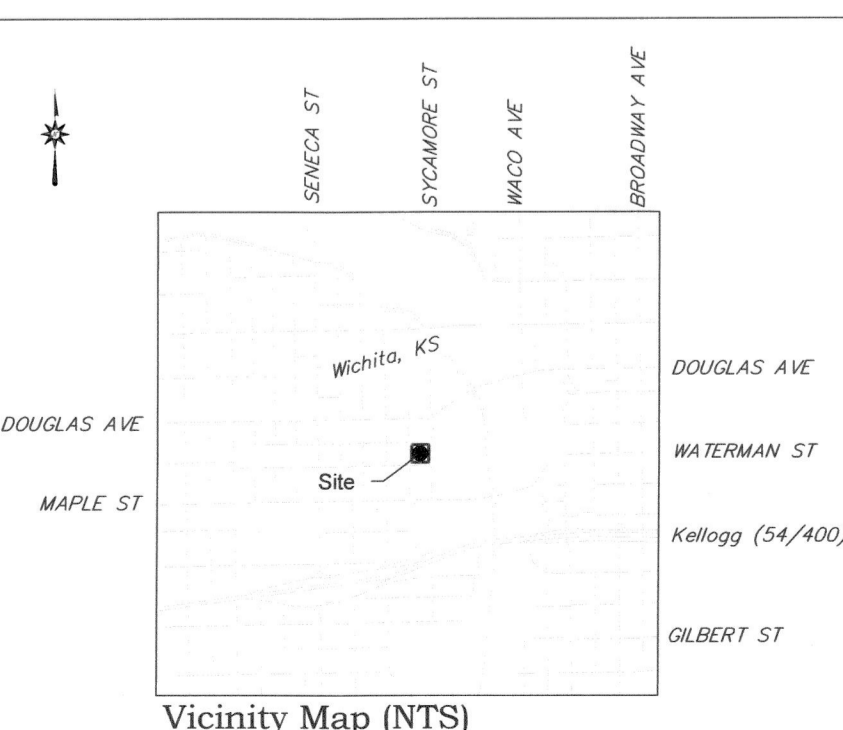
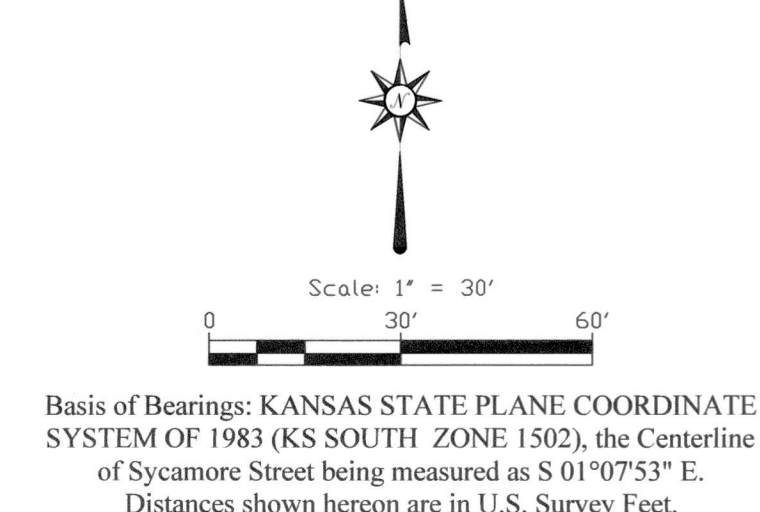
COUNTY SURVEYOR'S CERTIFICATE

Reviewed in accordance with K.S.A. 58-2005 on this \_\_\_ day of \_\_\_, \_\_\_. Tricia L. Robello, P.S. 1246 Deputy County Surveyor Sedgwick County, Kansas

SURVEY NOTES:

- 1. Date of Preparation: December 21st, 2021.
2. A master grading plan has been developed for this plat. All drainage easements, rights-of-way, and reserves shall remain at established grades (unless modified with the approval of the City Engineer) and shall be unobstructed to allow for the conveyance of Stormwater Manual.
3. 15' platted alley (West Wichita) was vacated by Doc.# 29970009, (VAC2020-00014). A Temporary utility easement was created by Doc.#/Flm-Pg: 29990275 to protect existing utilities until such time that they are removed or abandoned, at the time of survey the utilities still exist.

- (M) = Measured Bearing/Distance
(CM) = Calc'd from Measured
(P) = Platted
+ = 1/2" x 24" Iron Bar w/ orange cap stamped "Merestone CLS-179"
+ = 1/4" Cut Set in Concrete
o = Found Iron Pipe as noted.
o BM = Benchmark



Drawing Name: K:\CAD\Design\Survey\01-Trans\Systems\21-05-157 Wichita Transit\Platting\21-05-157 Wichita Transit FINAL Platting.dwg