

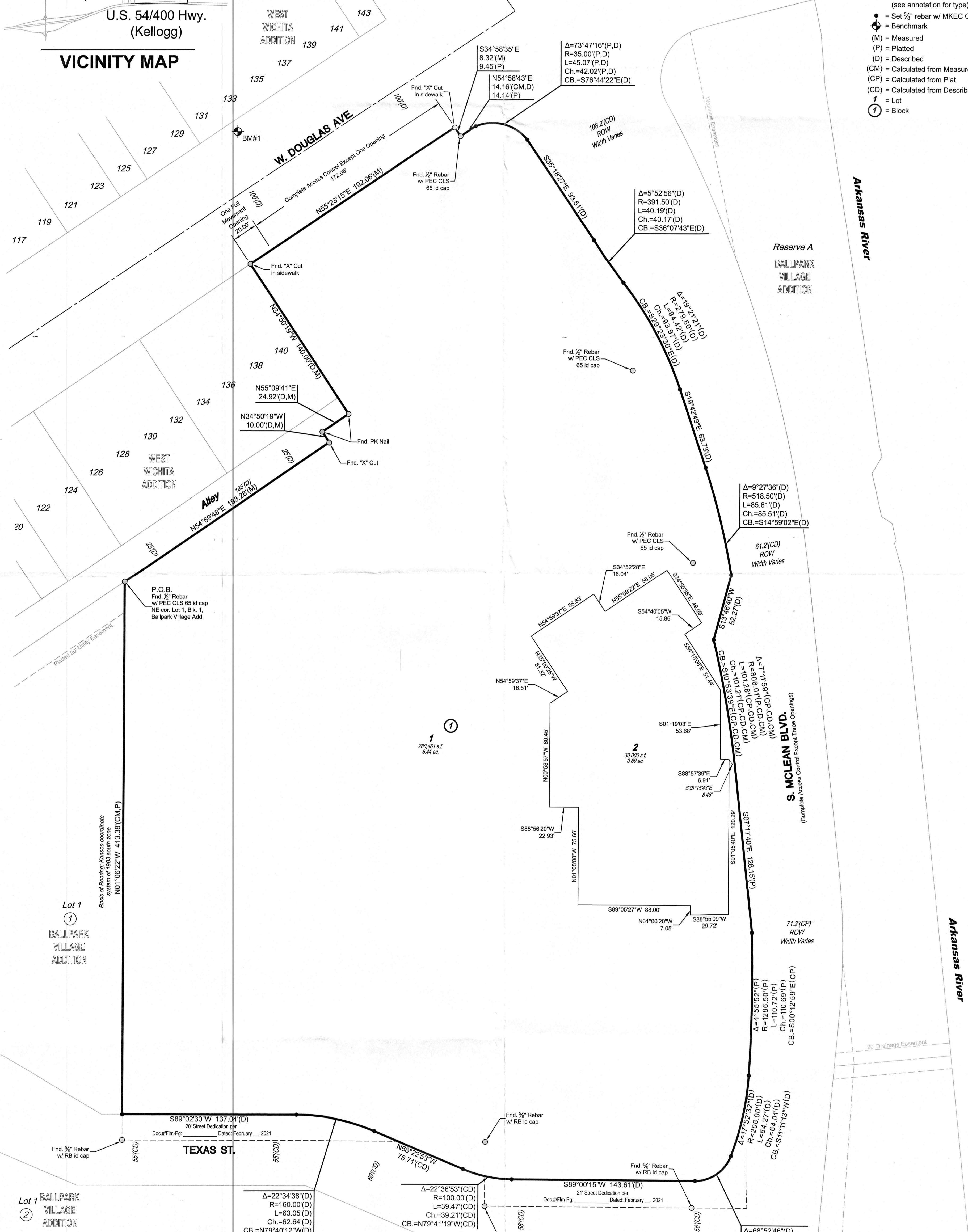
FINAL PLAT RIVERFRONT VILLAGE ADDITION AN ADDITION TO WICHITA, SEDGWICK COUNTY, KANSAS



VICINITY MAP

LEGEND

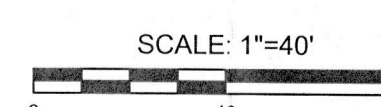
- Date of Survey: June 2020
- = Found monument (see annotation for type)
 - = Set 1/2" rebar w/ MKEC CLS 39 id. cap
 - ⊕ = Benchmark
 - (M) = Measured
 - (P) = Platted
 - (D) = Described
 - (CM) = Calculated from Measured
 - (CP) = Calculated from Plat
 - (CD) = Calculated from Described
 - ① = Lot
 - ② = Block



- ### NOTES
- A portion of Lot 1 Block 1 is subject to a Private Parking and Access Easement recorded on Doc.#Fim-Pg: 28668339, Dated: April 26, 2005. Said easement is not plotted hereon.
 - A portion of Lot 1, Block 1, is subject to private Covenants and Restrictions recorded on Film 598, Page 158 and Film 907, Page 1321. The limits of said covenants are not plotted hereon.

BENCHMARK

PK Nail in sidewalk on north side of Douglas, northeast of north access drive for 525 W. Douglas, lying 60 feet east of light pole, west of southwest drive to parking lot and 27 feet west of light pole east of southwest drive to parking lot.
Elev. = 1298.62 NAVD83



Basis of Bearings: Kansas coordinate system of 1983 south zone bearing of N01°06'22"W on the east line of Lot 1, Block 1, Ballpark Village Addition to Wichita, Sedgwick County, Kansas. This plat is surveyed and platted on NAD83 using Kansas state plane south zone coordinates, modified to the surface, having a combined adjustment scale factor of 1.000120014401728



