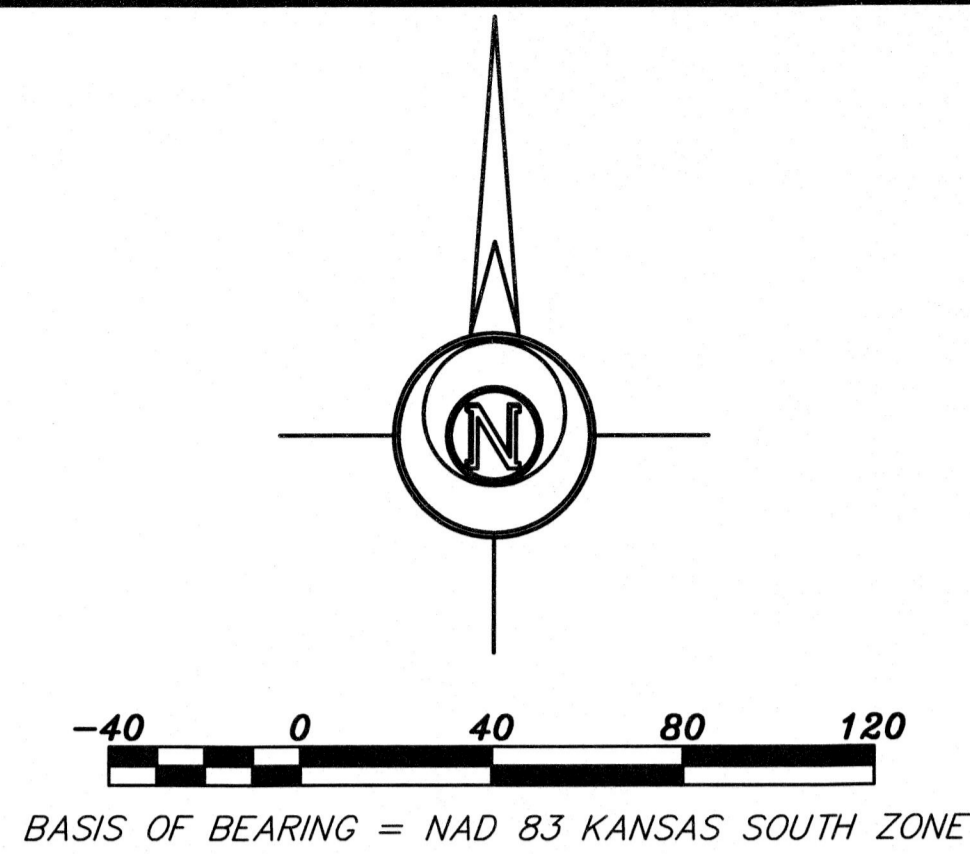
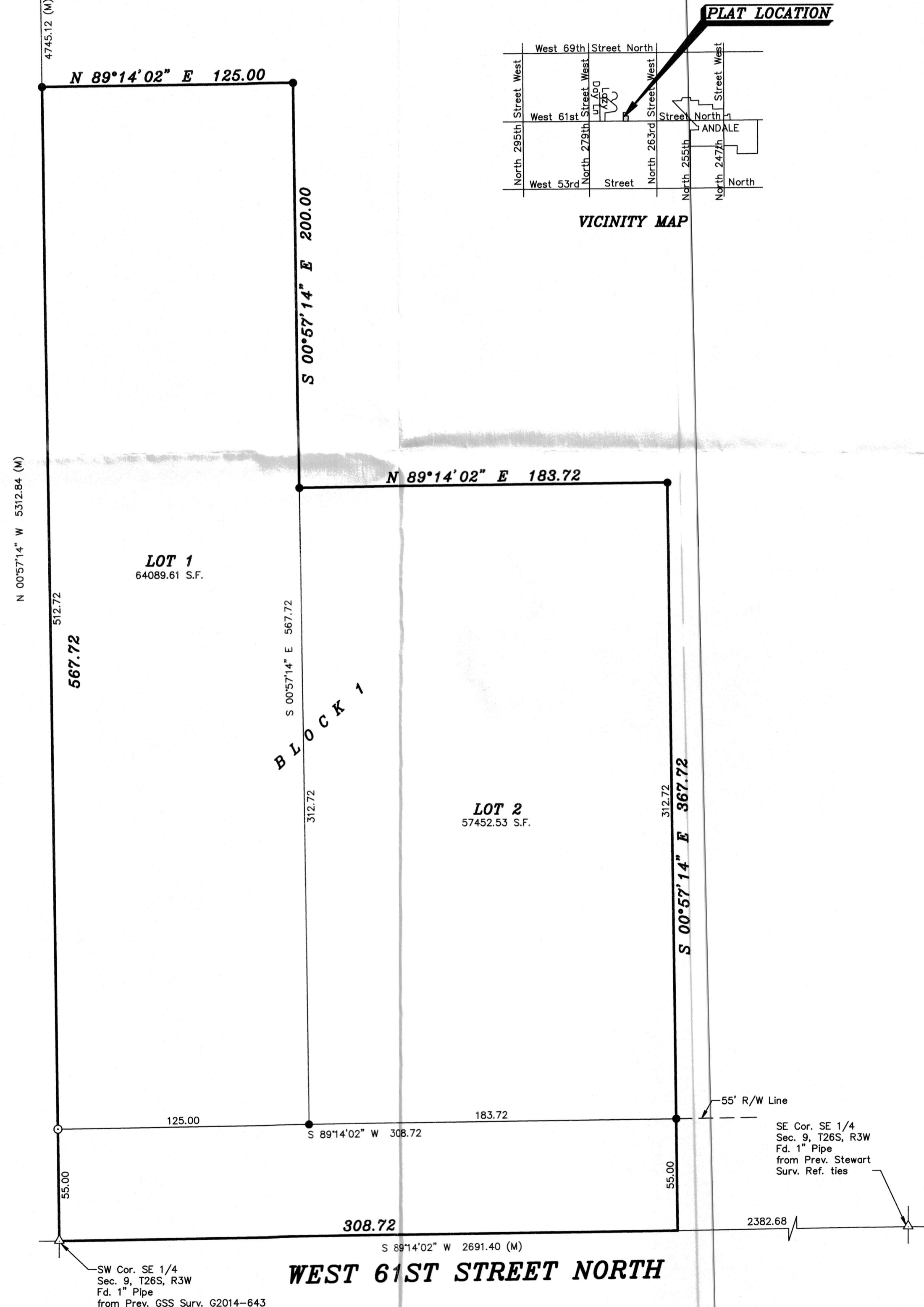


FINAL PLAT  
**SIGG ADDITION**  
 A PORTION OF THE SOUTHEAST QUARTER OF SECTION 9, TOWNSHIP 26  
 SOUTH, RANGE 3 WEST OF THE 6TH PRINCIPAL MERIDIAN, SEDGWICK COUNTY, KANSAS.



- LEGEND**
- △ - Sectional Monument Found
  - - Survey Monument Found
  - - 5/8" x 24" Iron Rebar Set w/G.S.S. Cap
  - - Guy Anchor
  - - Light Pole
  - - Mail Box
  - - Power Pole
  - - Water Well
  - - Guard Post
  - (C) - Calculated
  - (M) - Measured
  - (D) - Deeded (Bk. 1787, Pg. 1634)
  - (PS) - Previous GSS Survey G2014-643

NW Cor. NE 1/4  
 Sec. 9, T26S, R3W  
 Fd. 1" Pipe  
 from County Reference Ties



**LAND SURVEYOR'S CERTIFICATE AND DESCRIPTION**

I, the undersigned, licensed land surveyor of the State of Kansas, do hereby certify that the following described tract of land was surveyed on \_\_\_\_\_, 2015 and the accompanying final plat prepared and that all monuments shown herein actually exist and their positions are correctly shown to the best of my knowledge and belief:

**DESCRIPTION:**

A portion of the Southeast Quarter of Section 9, Township 26 South, Range 3 West of the 6th Principal Meridian in Sedgwick County, Kansas, more particularly described as follows:  
 Beginning at the Southwest corner of the Southeast Quarter of Section 9, Township 26 South, Range 3 West of the 6th Principal Meridian; thence with a bearing of bearings is NAD83 Kansas South Zone) North 00°57'14" West along the West line of said Southeast Quarter 567.72 feet; thence North 89°14'02" East parallel with the South line of said Southeast Quarter a distance of 125.00 feet; thence South 00°57'14" East parallel with the West line of said Southeast Quarter 200.00 feet; thence North 89°14'02" East 183.72 feet; thence South 00°57'14" East parallel with the West line of said Southeast Quarter 367.72 feet to the South line of said Southeast Quarter; thence South 89°14'02" West along the South line of said Southeast Quarter 308.72 feet to the point of beginning containing 3.180 Acres.

Date \_\_\_\_\_, 2015.

\_\_\_\_\_  
 Daniel E. Garber, RLS #683

**OWNER'S CERTIFICATE AND DEDICATION**

STATE OF KANSAS )  
 ) SS  
 COUNTY OF SEDGWICK )

Know all men by these presents that I, the undersigned, have caused the land described in the Surveyor's Certificate to be platted into a Lot and Block to be known as "SIGG ADDITION", a subdivision in the Southeast Quarter of Section 9, Township 26 South, Range 3 West of the 6th Principal Meridian in Sedgwick County, Kansas; and further that the land contained herein is held and shall be conveyed subject to any applicable restrictions, reservations, and covenants now on file or hereafter filed in the Office of the Register of Deeds of Sedgwick County, Kansas. Street Right-of-way shown hereon and not heretofore dedicated to the public is hereby dedicated to and for the use of the public.

\_\_\_\_\_  
 Gary L. Sigg

\_\_\_\_\_  
 Susan M. Sigg

**NOTARY CERTIFICATE**

STATE OF KANSAS )  
 ) SS  
 COUNTY OF SEDGWICK )

The foregoing instrument was acknowledged before me on this \_\_\_\_ day of \_\_\_\_\_, 2015 by Gary L. Sigg and Susan M. Sigg, who are personally known to me to be the persons who executed the above certificate and dedication.

\_\_\_\_\_  
 , Notary Public

My Commission Expires: \_\_\_\_\_

**PLANNING COMMISSION CERTIFICATE**

STATE OF KANSAS )  
 ) SS  
 COUNTY OF SEDGWICK )

This plat of "SIGG ADDITION", a subdivision of a portion of the Southeast Quarter of Section 9, Township 26 South, Range 3 West of the 6th Principal Meridian in Sedgwick County, Kansas; has been submitted to and approved by the Wichita-Sedgwick County Metropolitan Area Planning Commission, Wichita Kansas.

Dated this \_\_\_\_ day of \_\_\_\_\_, 2015.

Wichita-Sedgwick County Metropolitan Area Planning Commission

By \_\_\_\_\_, Chair  
 Carol Chapman Neugent

ATTEST: \_\_\_\_\_, Interim Secretary  
 W. David Barber

**GOVERNING BODY CERTIFICATE**

This plat approved and all dedications shown hereon, if any, accepted by the Board of County Commissioners of Sedgwick County, Kansas this \_\_\_\_ day of \_\_\_\_\_, 2015.

\_\_\_\_\_  
 Richard Ranzau, Chair - 5th District

ATTEST: \_\_\_\_\_, County Clerk  
 Kelly B. Arnold

**COUNTY SURVEYOR'S CERTIFICATE**

Reviewed in accordance with K.S.A. 58-2005 on this \_\_\_\_ day of \_\_\_\_\_, 2015.

STATE OF KANSAS )  
 ) SS  
 COUNTY OF SEDGWICK )

\_\_\_\_\_  
 Tricia L. Robello, L.S. #1246  
 Deputy County Surveyor  
 Sedgwick County, Kansas

**REGISTER OF DEEDS CERTIFICATE**

STATE OF KANSAS )  
 ) SS  
 COUNTY OF SEDGWICK )

This is to certify that this instrument was filed for record in the Register of Deeds Office at \_\_\_\_\_, m. on the \_\_\_\_ day of \_\_\_\_\_, 2015.  
 Book \_\_\_\_ Page \_\_\_\_

\_\_\_\_\_  
 Bill Meek, Register of Deeds

\_\_\_\_\_  
 Tonya E. Buckingham, Deputy

**TRANSFER OF RECORD**

STATE OF KANSAS )  
 ) SS  
 COUNTY OF SEDGWICK )

Entered on transfer record on this \_\_\_\_ day of \_\_\_\_\_, 2015.

\_\_\_\_\_  
 Kelly B. Arnold, County Clerk

<b>SIGG ADDITION</b>		<b>A PORTION OF THE SE 1/4 SECTION 9, T26S, R3W SEDGWICK COUNTY, KS.</b>	
Prepared By: <b>Garber Surveying Service, P.A.</b>			
<b>GSS</b>		HUTCHINSON (Main Office) 2908 North Plum St. 67502 Ph. 620-665-7032 Fax 620-663-7401 McPHERSON (Branch Office) 115 East Marlin 67460 Ph. 620-241-4441 Fax 620-241-4458 NEWTON (Branch Office) 511 North Poplar St. 67114 Ph. 316-283-5053 Fax 316-283-5073	
Drawn By: SLW	Scale: 1"=40'	Date of Field Work: June 17, 2015	Job No: G2015-408
Checked By: DEG	Date: 10/5/2015	Sheet 1 of 1 Sheet(s)	