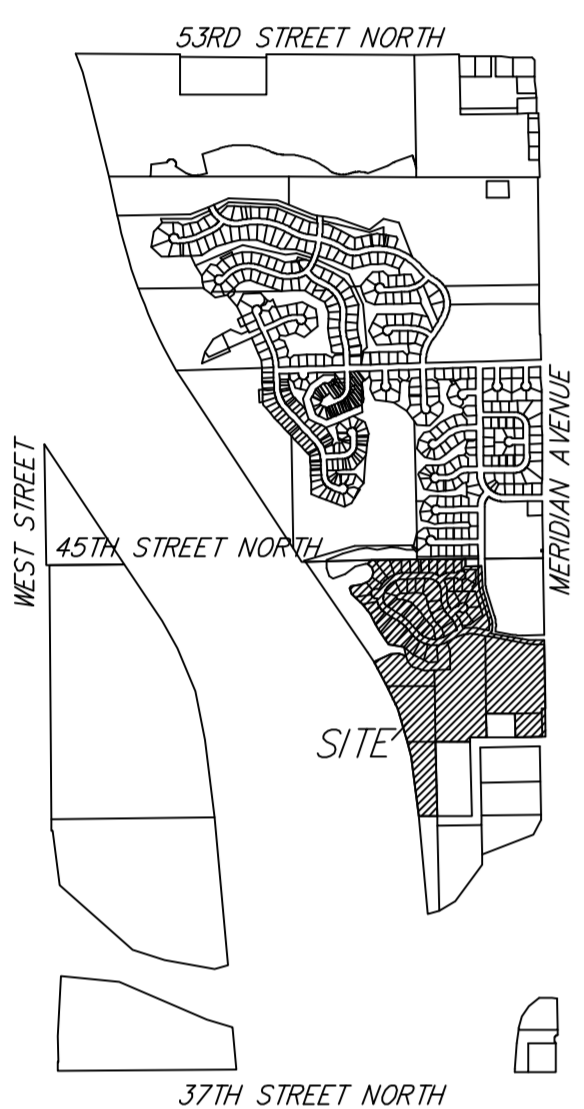
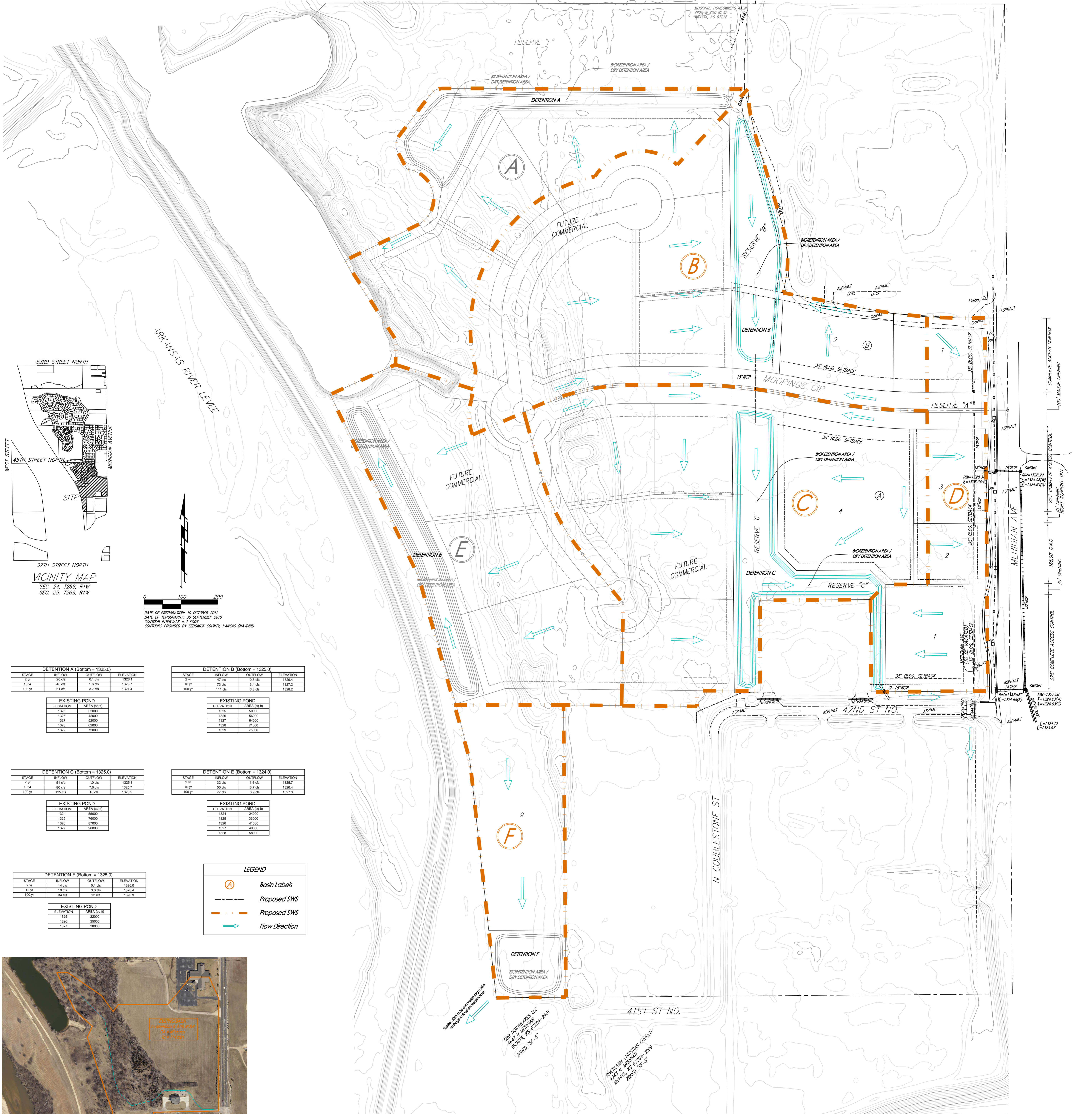


DRAINAGE PLAN

LAKESIDE AT THE MOORINGS

WICHITA, SEDGWICK COUNTY, KANSAS



DATE OF PREPARATION: 10 OCTOBER 2011
DATE OF TOPOGRAPHY: 30 SEPTEMBER 2010
CONTOUR INTERVALS = 1 FOOT
CONTOURS PROVIDED BY SEDGWICK COUNTY, KANSAS (NAVD83)

STAGE	INFLOW	OUTFLOW	ELEVATION
2 yr	28 cfs	0.1 cfs	1326.1
10 yr	40 cfs	1.0 cfs	1326.7
100 yr	61 cfs	3.7 cfs	1327.4

STAGE	INFLOW	OUTFLOW	ELEVATION
2 yr	47 cfs	0.8 cfs	1326.4
10 yr	73 cfs	2.4 cfs	1327.2
100 yr	111 cfs	6.3 cfs	1328.2

ELEVATION	AREA (sq ft)
1325	32000
1326	42000
1327	52000
1328	62000
1329	72000

ELEVATION	AREA (sq ft)
1325	50000
1326	58000
1327	66000
1328	71000
1329	73000

STAGE	INFLOW	OUTFLOW	ELEVATION
2 yr	51 cfs	1.0 cfs	1325.1
10 yr	80 cfs	3.0 cfs	1325.7
100 yr	125 cfs	18.0 cfs	1326.9

STAGE	INFLOW	OUTFLOW	ELEVATION
2 yr	32 cfs	1.8 cfs	1325.7
10 yr	50 cfs	3.7 cfs	1326.4
100 yr	77 cfs	6.9 cfs	1327.3

ELEVATION	AREA (sq ft)
1324	56000
1325	76000
1326	87000
1327	90000

ELEVATION	AREA (sq ft)
1324	26000
1325	30000
1326	41000
1327	49000
1328	58000

STAGE	INFLOW	OUTFLOW	ELEVATION
2 yr	14 cfs	0.1 cfs	1326.0
10 yr	19 cfs	0.6 cfs	1326.4
100 yr	34 cfs	1.2 cfs	1326.9

ELEVATION	AREA (sq ft)
1325	22000
1326	26000
1327	28000

LEGEND

- (A) Basin Labels
- - - Proposed SWS
- - - Proposed SWS
- Flow Direction



NOTES: No FEMA SFHA exists on this property as of this date.

The proposed bio-retention area / dry detention areas will be utilized for WQ, CP, and overall site detention. These areas may incorporate multiple TSS removal features. These areas will be above groundwater and will utilize infiltration into the in situ sandy soils.

WQv has been accounted for in the detention areas. Frontage lots to Meridian can discharge into the SWS system without treatment due to over-treatment in the basins. The ultimate discharge point is the same for both SWS and the detention basins.

Underground SWS is anticipated to be utilized on site per site development.

DRAINAGE PLAN

LAKESIDE AT THE MOORINGS

Baughman Company P.A.
 ENGINEERING | SURVEYING | PLANNING | LANDSCAPE ARCHITECTURE
115 EAST 51st, WICHITA, KS 67214 | P: 316.262.1771 | F: 316.262.0149
 REV 07 NOV 2013
 08 FEB 2012