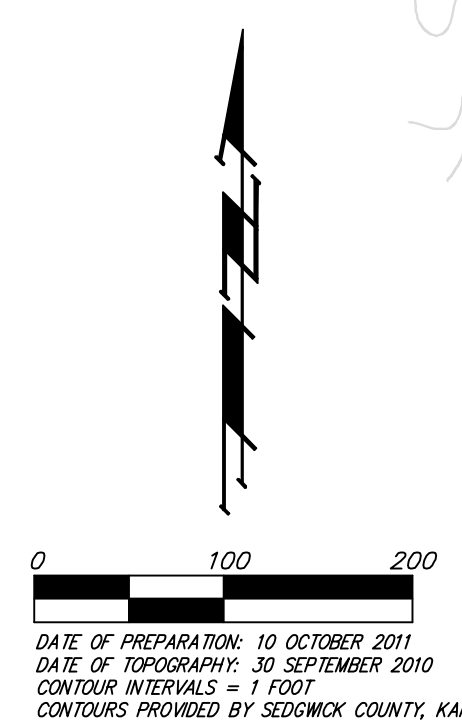
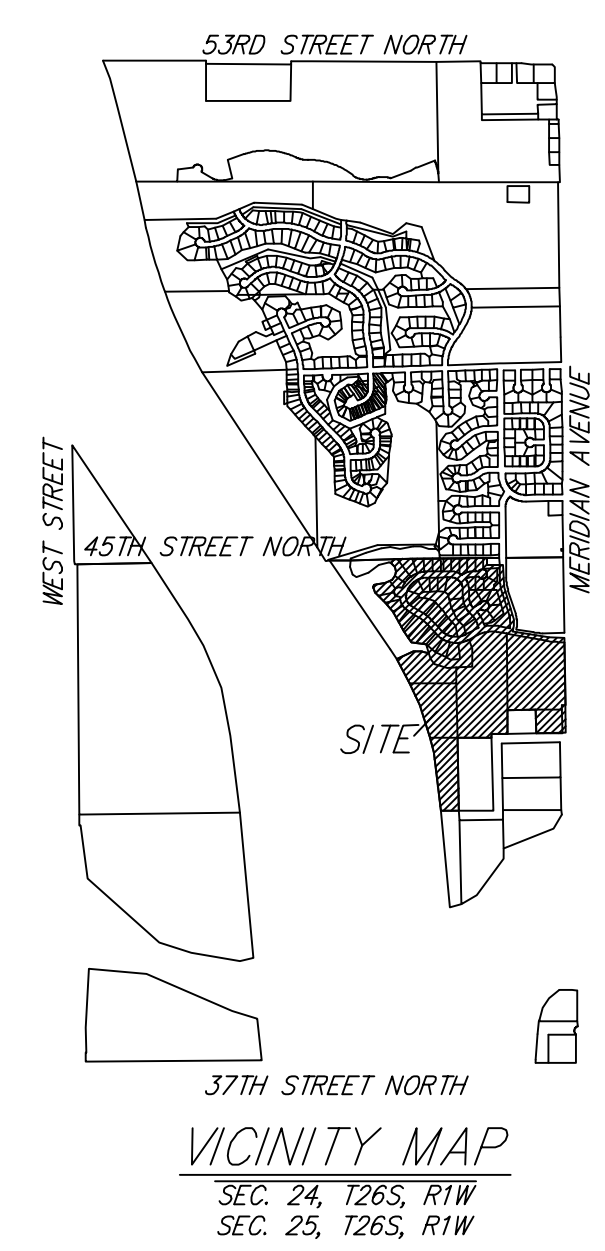


# DRAINAGE PLAN

## LAKESIDE AT THE MOORINGS WICHITA, SEDGWICK COUNTY, KANSAS



**DETENTION A (Bottom = 1325.0)**

STAGE	INFLOW	OUTFLOW	ELEVATION
2 ft	36 cfs	0.1 cfs	1326.4
10 ft	48 cfs	1.8 cfs	1326.7
100 ft	61 cfs	3.7 cfs	1327.4

**DETENTION B (Bottom = 1325.0)**

STAGE	INFLOW	OUTFLOW	ELEVATION
2 ft	47 cfs	1.0 cfs	1326.4
10 ft	73 cfs	4.4 cfs	1327.1
100 ft	111 cfs	8.5 cfs	1328.3

**EXISTING POND**

ELEVATION	AREA (SQ FT)
1326	2000
1325	4000
1324	6000
1323	8000
1322	10000
1321	12000

**EXISTING POND**

ELEVATION	AREA (SQ FT)
1326	2000
1325	4000
1324	6000
1323	8000
1322	10000
1321	12000

**DETENTION C (Bottom = 1325.0)**

STAGE	INFLOW	OUTFLOW	ELEVATION
2 ft	49 cfs	3.5 cfs	1326.4
10 ft	77 cfs	8.1 cfs	1326.9
100 ft	122 cfs	20 cfs	1327.1

**DETENTION E (Bottom = 1324.0)**

STAGE	INFLOW	OUTFLOW	ELEVATION
2 ft	30 cfs	1.6 cfs	1325.7
10 ft	50 cfs	3.7 cfs	1326.4
100 ft	77 cfs	8.4 cfs	1327.3

**EXISTING POND**

ELEVATION	AREA (SQ FT)
1324	2000
1323	4000
1322	6000
1321	8000
1320	10000
1319	12000

**EXISTING POND**

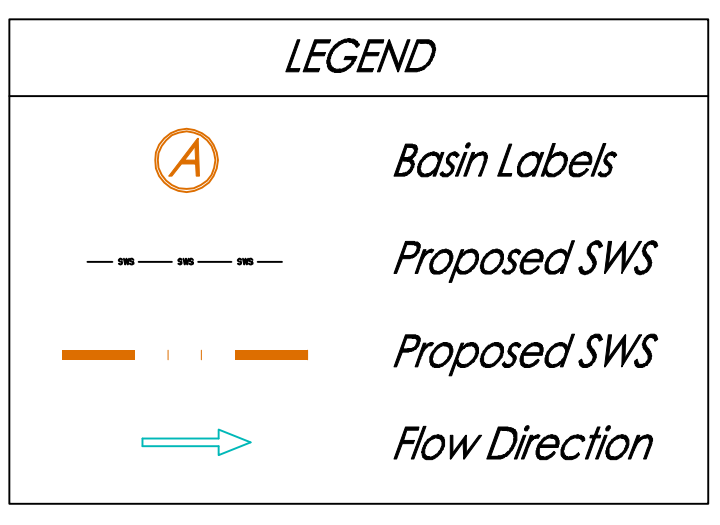
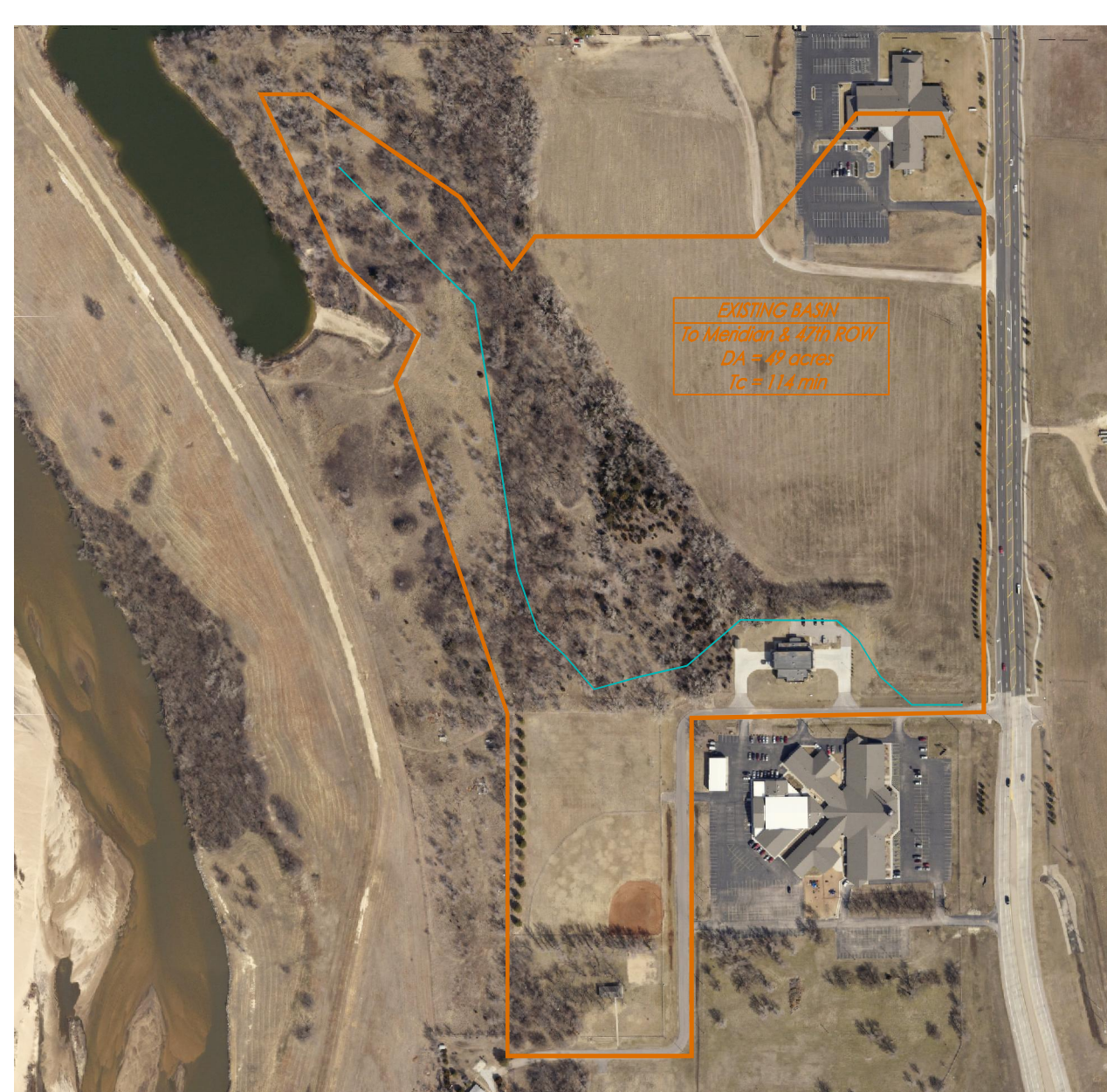
ELEVATION	AREA (SQ FT)
1324	2000
1323	4000
1322	6000
1321	8000
1320	10000
1319	12000

**DETENTION F (Bottom = 1325.0)**

STAGE	INFLOW	OUTFLOW	ELEVATION
2 ft	14 cfs	0.1 cfs	1326.0
10 ft	18 cfs	3.4 cfs	1326.4
100 ft	34 cfs	12 cfs	1326.9

**EXISTING POND**

ELEVATION	AREA (SQ FT)
1325	2000
1324	4000
1323	6000
1322	8000
1321	10000
1320	12000



**NOTES:** No FEMA SFHA exists on this property as of this date.

The proposed Bio-retention area / dry detention areas will be utilized for WQ, CP, and overall site detention. These areas may incorporate multiple TSS removal features. These areas will be above groundwater and will utilize infiltration into the in situ sandy soils.

Underground SWS is anticipated to be utilized on site per site development.

### DRAINAGE PLAN LAKESIDE AT THE MOORINGS

REV 25 OCT 2013  
06 FEB 2012

**Baughman Company, P.A.**  
315 E.H.S. Wichita, KS 67211 P 316.262.7271 F 316.262.0149  
ENGINEERING | SURVEYING | PLANNING | LANDSCAPE ARCHITECTURE

E:\Physical\Moorings Commercial\Water Resources\Moorings Commercial\_dra\plan\_10-25-11.dwg