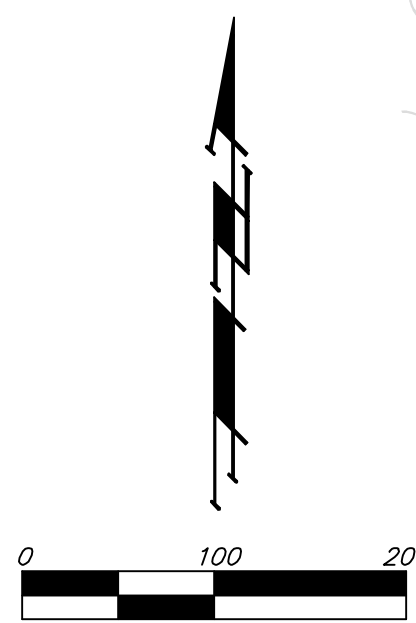
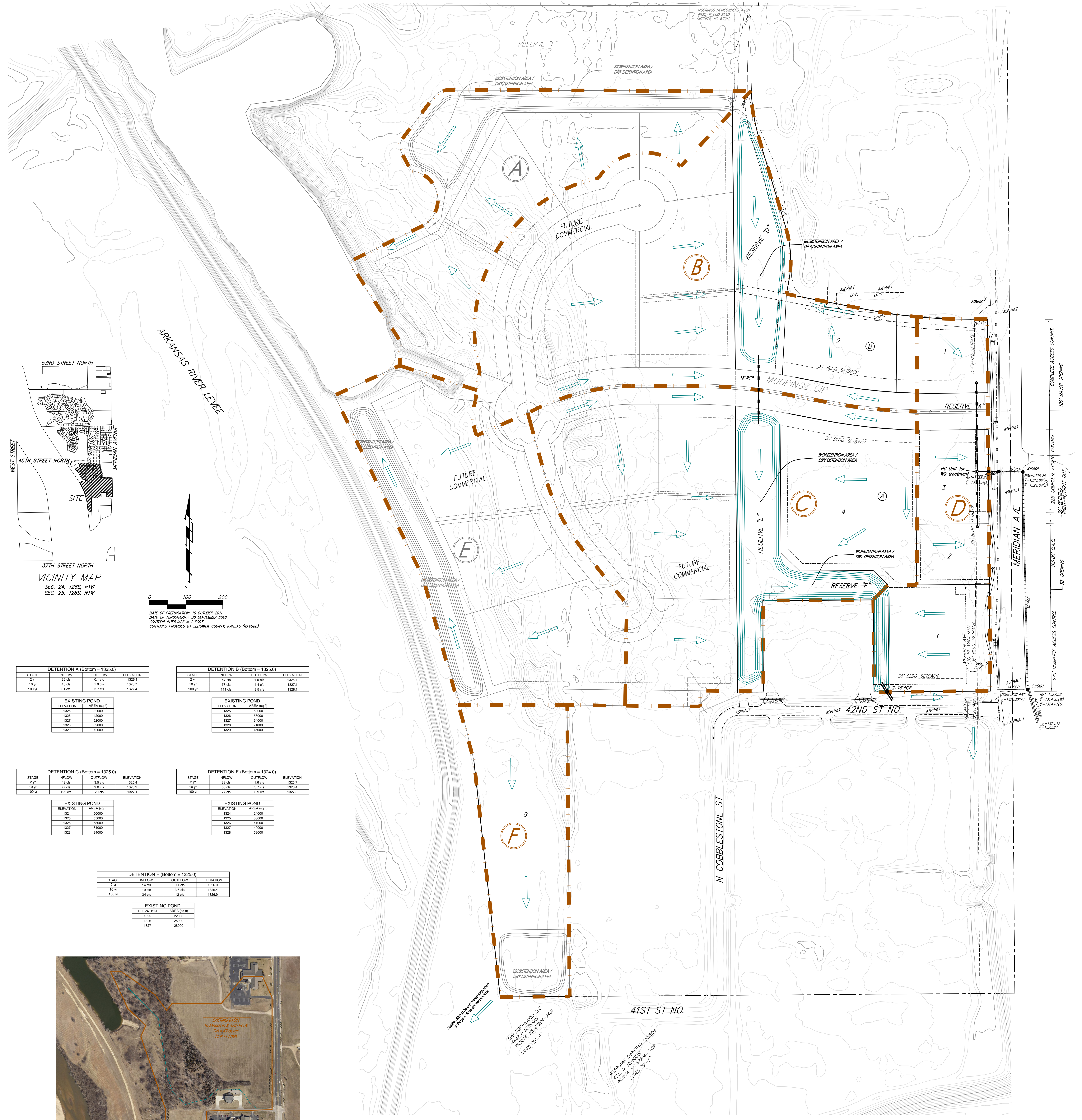


DRAINAGE PLAN LAKESIDE AT THE MOORINGS WICHITA, SEDGWICK COUNTY, KANSAS



DETENTION A (Bottom = 1325.0)

| STAGE | INFLOW | OUTFLOW | ELEVATION |
|--------|--------|---------|-----------|
| 2' F | 25.0% | 6.10% | 1326.1 |
| 10' F | 45.0% | 15.0% | 1328.7 |
| 100' F | 61.0% | 37.0% | 1331.4 |

DETENTION B (Bottom = 1325.0)

| STAGE | INFLOW | OUTFLOW | ELEVATION |
|--------|--------|---------|-----------|
| 2' F | 41.0% | 11.0% | 1326.4 |
| 10' F | 73.0% | 4.4.0% | 1327.1 |
| 100' F | 111.0% | 8.8.0% | 1328.8 |

EXISTING POND

| ELEVATION | AREA (SQ FT) |
|-----------|--------------|
| 1325 | 3000 |
| 1326 | 4000 |
| 1327 | 5000 |
| 1328 | 6000 |
| 1329 | 7000 |

EXISTING POND

| ELEVATION | AREA (SQ FT) |
|-----------|--------------|
| 1325 | 5000 |
| 1326 | 6000 |
| 1327 | 7000 |
| 1328 | 8000 |
| 1329 | 9000 |

DETENTION C (Bottom = 1325.0)

| STAGE | INFLOW | OUTFLOW | ELEVATION |
|--------|--------|---------|-----------|
| 2' F | 41.0% | 3.5.0% | 1325.4 |
| 10' F | 77.0% | 9.1.0% | 1326.1 |
| 100' F | 122.0% | 21.0% | 1327.1 |

DETENTION E (Bottom = 1324.0)

| STAGE | INFLOW | OUTFLOW | ELEVATION |
|--------|--------|---------|-----------|
| 2' F | 32.0% | 1.8.0% | 1325.7 |
| 10' F | 59.0% | 3.1.0% | 1326.4 |
| 100' F | 77.0% | 6.8.0% | 1327.3 |

EXISTING POND

| ELEVATION | AREA (SQ FT) |
|-----------|--------------|
| 1324 | 5000 |
| 1325 | 6000 |
| 1326 | 7000 |
| 1327 | 8000 |
| 1328 | 9000 |

EXISTING POND

| ELEVATION | AREA (SQ FT) |
|-----------|--------------|
| 1324 | 5000 |
| 1325 | 6000 |
| 1326 | 7000 |
| 1327 | 8000 |
| 1328 | 9000 |

DETENTION F (Bottom = 1325.0)

| STAGE | INFLOW | OUTFLOW | ELEVATION |
|--------|--------|---------|-----------|
| 1' F | 14.0% | 0.1.0% | 1324.4 |
| 10' F | 19.0% | 3.8.0% | 1324.4 |
| 100' F | 34.0% | 12.0% | 1325.4 |

EXISTING POND

| ELEVATION | AREA (SQ FT) |
|-----------|--------------|
| 1325 | 2000 |
| 1326 | 2000 |
| 1327 | 2000 |



LEGEND

- A Basin Labels
- Proposed SWS
- - - Proposed SWS
- Flow Direction

NOTES: No FEMA SFHA exists on this property as of this date.

The proposed Bio-retention area / dry detention areas will be utilized for WQ, CP, and overall site detention. These areas may incorporate multiple TSS removal features. These areas will be above groundwater and will utilize infiltration into the in situ sandy soils.

Frontage Lots to Meridian will need to provide alternate WQ treatment. Typically done with a Hydratguard unit or similar.

Underground SWS is anticipated to be utilized on site per site development.

**DRAINAGE PLAN
LAKESIDE AT THE MOORINGS**

REV 28 OCT 2011
18A FEB 2012

Baughman Company, P.A.
11501 S. WILSON, WICHITA, KS 67201 | P: 316.262.0149
F: 316.262.0149

ENGINEERING | SURVEYING | PLANNING | LANDSCAPE ARCHITECTURE

© Project/Moorings Commercial/River Renaissance/Moorings Commercial_Baughman_10.25.11.dwg