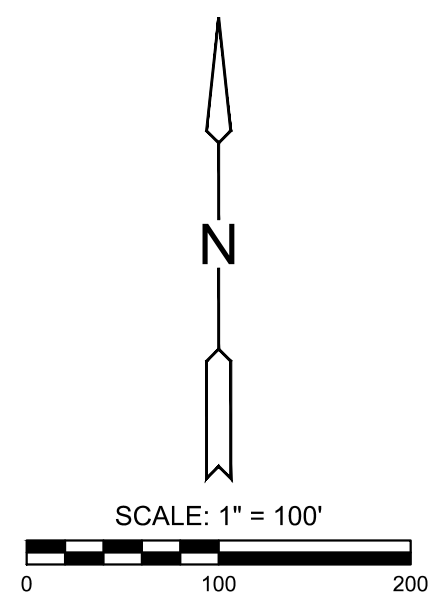
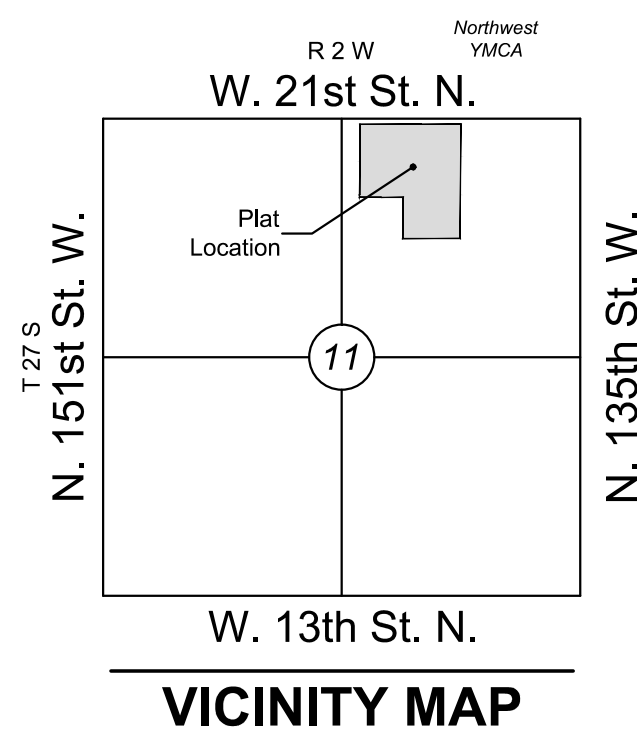


# FINAL PLAT

## YMCA ATHLETICS ADDITION

### AN ADDITION TO WICHITA, SEDGWICK COUNTY, KANSAS

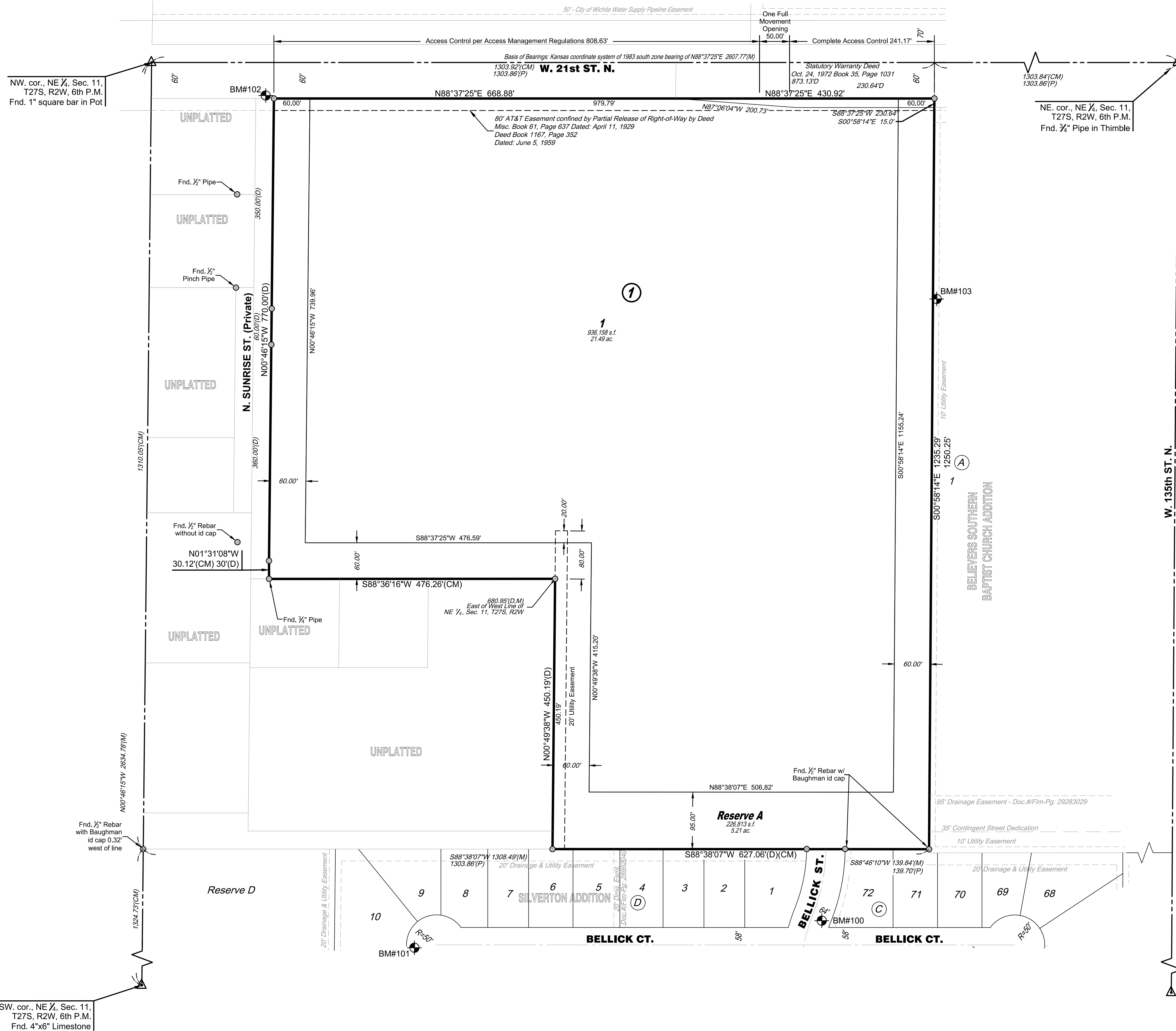


Basis of Bearings: Kansas coordinate system of 1983 south zone bearing of N88°37'25"E on the north line of Northeast Quarter, Section 11, Township 27 South, Range 2 West of the Sixth Principal Meridian, Wichita, Sedgwick County, Kansas.  
This PUD is surveyed on NAD83 using Kansas state plane south zone coordinates, modified to the surface, having a combined adjustment scale factor of 1.0001200144

#### LEGEND

Date of Survey: 6/29/2023

- △ = Section Corner Monument Found
- = Found 3/8" rebar w/ MKEC CLS 39 id. cap or see annotation for type
- = Set 3/8" rebar w/ MKEC CLS 39 id. cap
- ⊕ = Benchmark
- (M) = Measured
- (P) = Platted
- (D) = Described or Deeded
- (CM) = Calculated from Measurement
- (CP) = Calculated from Plat
- (CD) = Calculated from Described or Deeded
- Drng. = Drainage
- Util. = Utility
- Esmt. = Easement
- ① = Lot
- ① = Block



MINIMUM PAD ELEVATIONS LOWEST OPENINGS		
LOT	BLOCK	ELEVATION NAVD88
1	1	1363.1

#### BENCHMARKS

- ⊕ CP 100  
N: 1696934.271 E: 1600574.164  
Elev.=1363.24 NAVD88  
Description: + Cut
- ⊕ CP/BM 101  
N: 1696872.958 E: 1599897.124  
Elev.=1364.63 NAVD88  
Description: +Cut in Square Cut front center curb inlet west side cut-de-sac on N. Bellick Ct.
- ⊕ CP/BM 102  
N: 1698287.798 E: 1599624.848  
Elev.=1362.91 NAVD88  
Description: + Cut in square cut on street sign base south side southeast corner 21st North and Sunrise Ave.
- ⊕ CP 103  
N: 1697974.167 E: 1600740.656  
Elev.=1363.22 NAVD88  
Description: + Cut

#### NOTES:

- 1.) This plat of "YMCA ATHLETICS ADDITION" is subject to the conditions of the Planned Unit Development PUD No. 115. The platted building setbacks are established with the PUD or as shown hereon.

