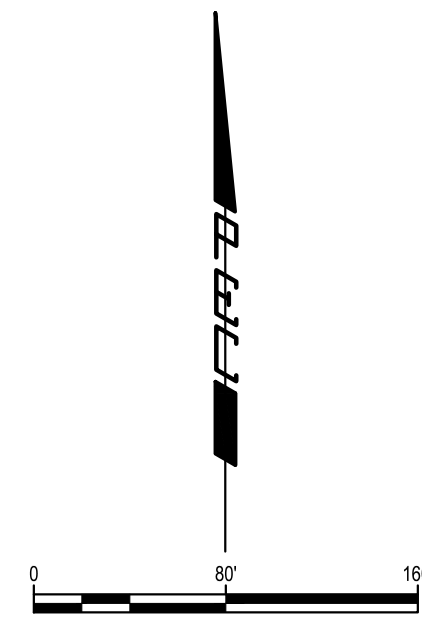


CYPRESS GLEN 2ND ADDITION

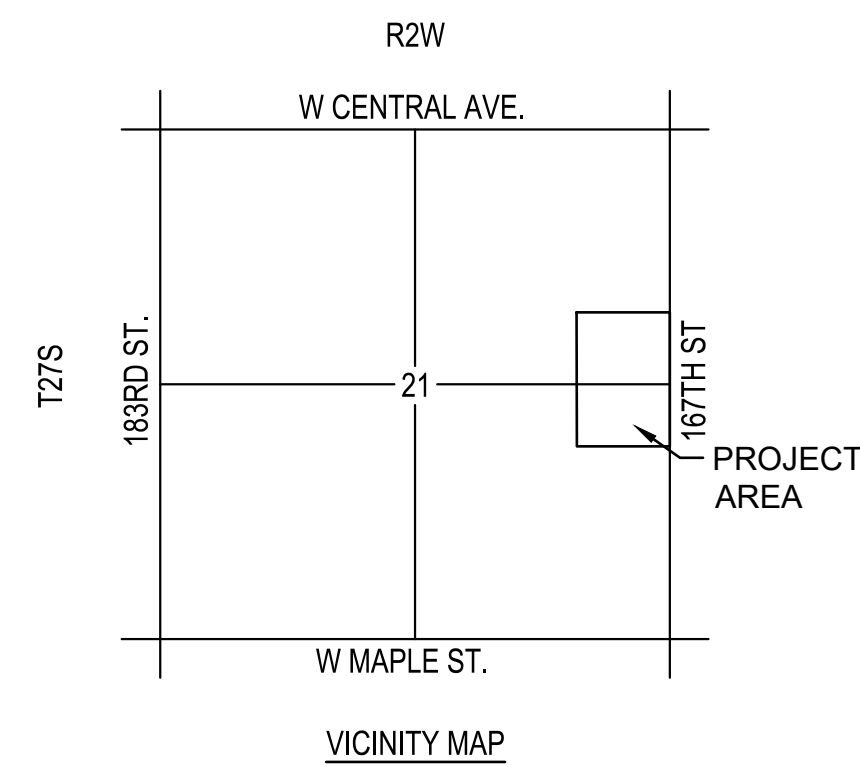
CITY OF WICHITA, SEDGWICK COUNTY, KANSAS

PRELIMINARY PLAT



PLAT LEGEND

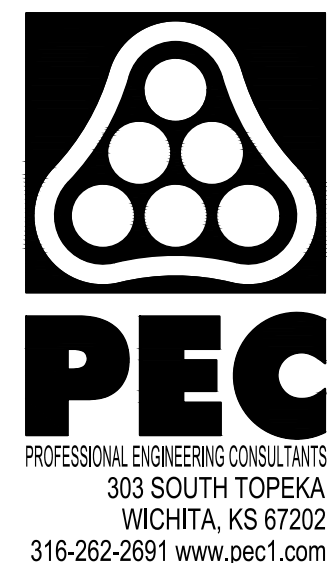
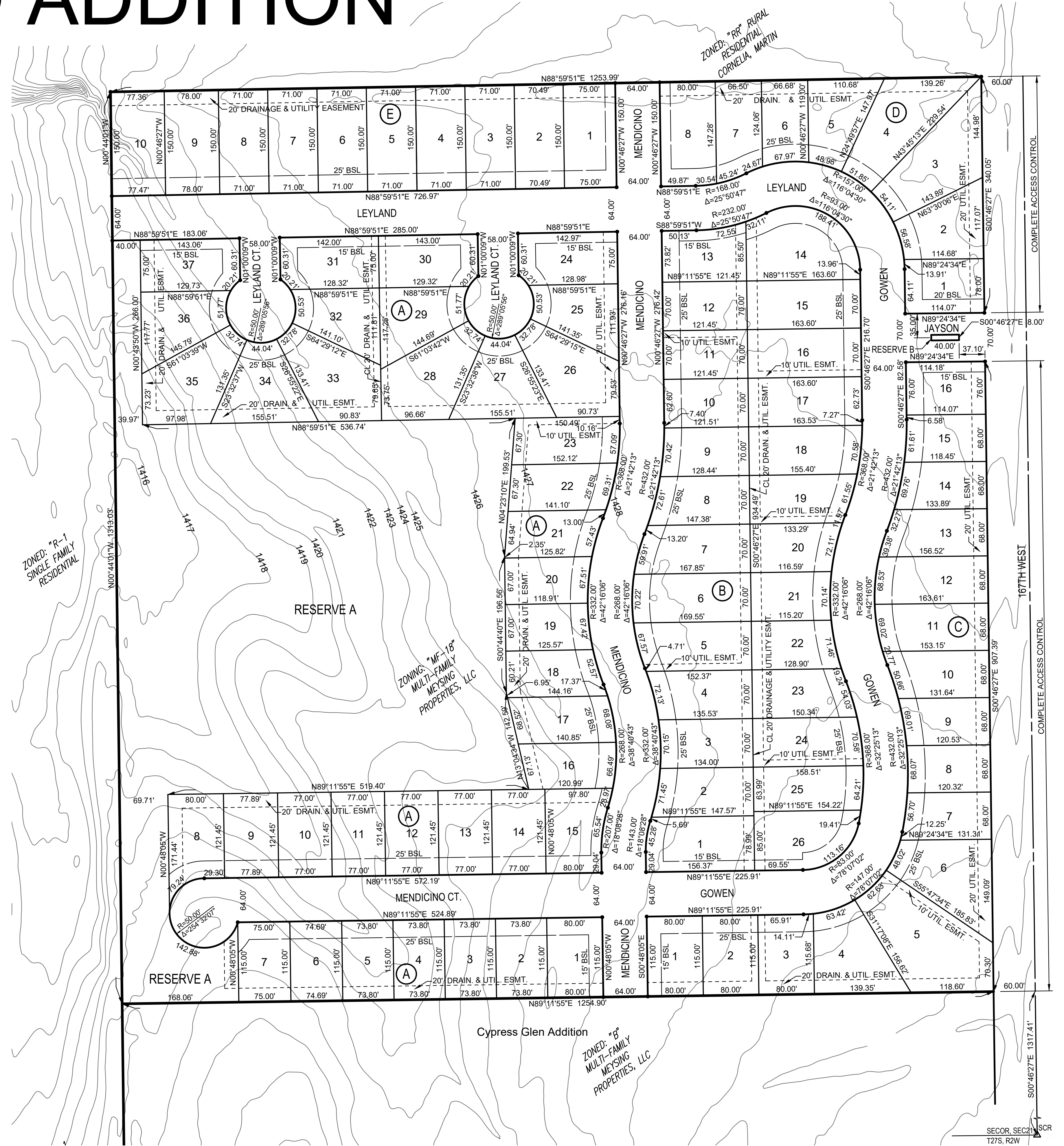
- △ FOUND CORNER AS NOTED
- SET 1/2" REBAR WITH PEC CAP
- FOUND 1/2" REBAR AS NOTED



LEGAL DESCRIPTION: LOT 9, BLOCK A, CYPRESS GLEN ADDITION

RESERVE "A" IS HEREBY PLATTED FOR OPEN SPACE, STORMWATER DETENTION, DRAINAGE, LANDSCAPING, RECREATIONAL USES, UTILITIES CONFINED TO EASEMENTS AND SIDEWALKS. RESERVE "B" IS HEREBY PLATTED FOR OPEN SPACE, ENTRY MONUMENTS, LANDSCAPING, AND UTILITIES CONFINED TO EASEMENTS. RESERVE "A" AND RESERVE "B" SHALL BE OWNED AND MAINTAINED BY AN HOMEOWNERS ASSOCIATION. COMPLIANCE WITH ANY PLATTED RESTRICTIONS AND APPLICABLE RESTRICTIVE COVENANTS AFFECTING SAID RESERVES SHALL BE BINDING ON ANY OWNERS, SUCCESSORS, HEIRS, OR ASSIGNS.

PROPERTY WILL BE SERVED BY CITY OF WICHITA INFRASTRUCTURE TO BE EXTENDED IN PHASES.



DRAWN: JACOB W. WILSON
 CHECKED: JACOB W. WILSON
 DATE: 07/20/23
 PROJECT: CYPRESS GLEN 2ND ADDITION, PHASE 2 PLAT
 DRAWING NO.: 2023-07-20-001

SECOR, SECT 21 SCR
T27S, R2W