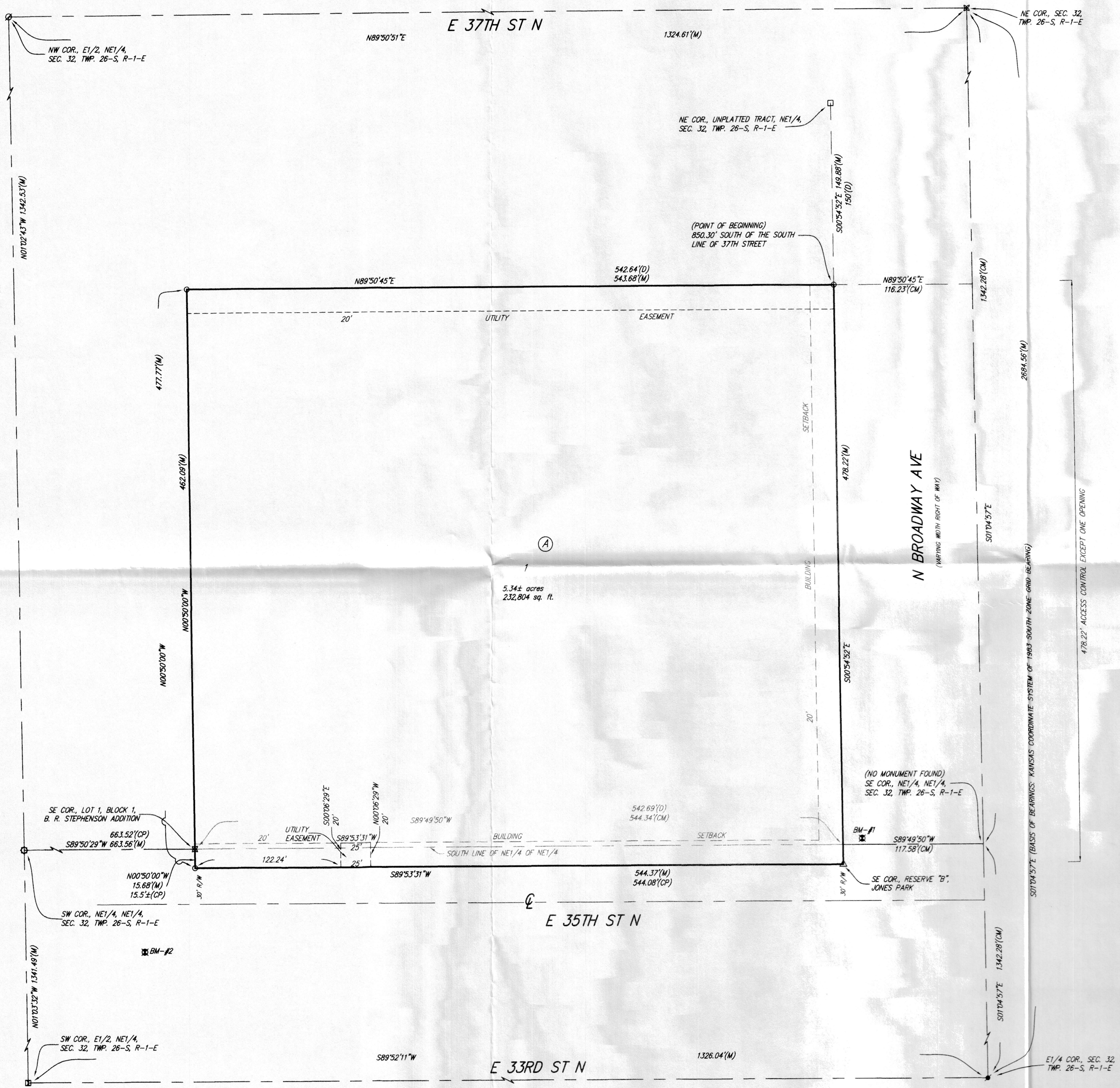


# WICHITA CONCRETE PIPE 2ND ADDITION

## WICHITA, SEDGWICK COUNTY, KANSAS

CITY HALL - ENGINEERING  
MAIL STOP 1-71  
Arcele Rosas  
FOR YOUR FILES

FINAL TRACING REC'D  
RECEIVED FEB 05 2024

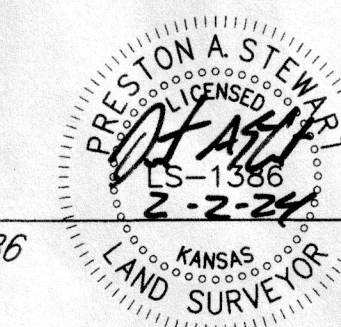


State of Kansas) SS  
Sedgwick County) We, Baughman Company, P.A., Surveyors in aforesaid county and state do hereby certify that we have surveyed and platted "WICHITA CONCRETE PIPE 2ND ADDITION", Wichita, Sedgwick County, Kansas and that the accompanying plat is a true and correct exhibit of the property surveyed, described as a tract of land in the Northeast Quarter of the Northeast Quarter of Section 32, Township 26 South, Range 1 East of the 6th P.M., Sedgwick County, Kansas more particularly described as follows: Beginning at a point on the West line of Broadway, said point being 850.3 feet South of the South line of 37th Street; thence South on the West line of Broadway to the North line of Reserve B, Jones Park Addition to North Wichita, Sedgwick County, Kansas; thence West on the North line of said Reserve B, 542.69 feet; thence North to a point 542.64 feet West of the point of beginning; thence East to the point of beginning; TOGETHER WITH the East 542.64 feet of Reserve B lying adjacent to the West line of Broadway, Jones Park Addition to North Wichita, Sedgwick County, Kansas.

Existing public easements and dedications being vacated by virtue of K.S.A. 12-512b, as amended.

All being situated in the Northeast Quarter of Section 32, Township 26 South, Range 1 East of the Sixth Principal Meridian, Sedgwick County, Kansas.

Baughman Company, P.A.



Preston A. Stewart, P.S. #1386, Surveyor

Know all men by these presents that we, the undersigned, have caused the land in the surveyors certificate to be platted into a Lot and a Block to be known as "WICHITA CONCRETE PIPE 2ND ADDITION", Wichita, Sedgwick County, Kansas. The utility easements are hereby granted to the public as indicated for the construction and maintenance of all public utilities. Access controls shall be as depicted on the face of the plat and are hereby granted to the appropriate governing body.

Wichita Concrete Pipe, Inc., a Kansas corporation

Wade A. Wentling, President

State of Kansas) SS  
Sedgwick County) The foregoing instrument acknowledged before me, this 1st day of February, 2024, by Wade A. Wentling, President of Wichita Concrete Pipe, Inc., a Kansas corporation, on behalf of the corporation.

My App'l. Exp. 09/20/2026  
LUNETTE A. SAUBER, Notary Public

This plat of "WICHITA CONCRETE PIPE 2ND ADDITION", Wichita, Sedgwick County, Kansas has been submitted to and approved by the Wichita-Sedgwick County Metropolitan Area Planning Commission, Wichita, Kansas.  
Dated this \_\_\_ day of \_\_\_, 2024.  
Wichita-Sedgwick County Metropolitan Area Planning Commission

Robert Dool, Chair  
Scott A. Wadle, Secretary

This plat approved and all dedications shown hereon accepted by the City Council of the City of Wichita, Kansas, this \_\_\_ day of \_\_\_, 2024.

Lily Wu, Mayor, City of Wichita  
Jamie Buster, City Clerk

Reviewed in accordance with K.S.A. 58-2005 on this \_\_\_ day of \_\_\_, 2024.

Tricia L. Robello, P.S. #1246  
Deputy County Surveyor  
Sedgwick County, Kansas

Entered on transfer record this \_\_\_ day of \_\_\_, 2024.

Kelly B. Arnold, County Clerk

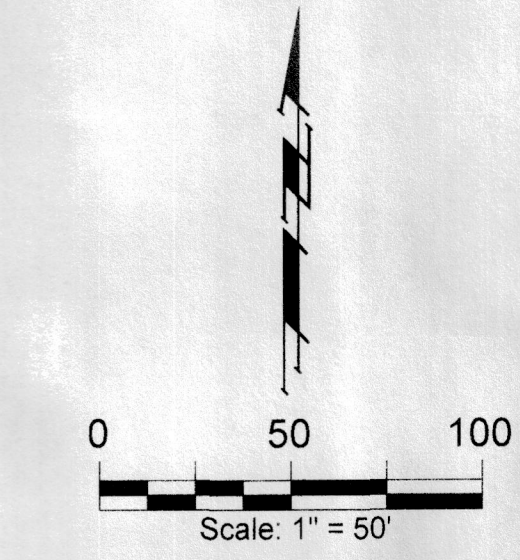
State of Kansas) SS  
Sedgwick County) This is to certify that this plat has been filed for record in the Office of the Register of Deeds, this \_\_\_ day of \_\_\_, 2024 at \_\_\_ o'clock \_\_\_ M.; and is duly recorded.

Tonya Buckingham, Register of Deeds

Kenly Zehring, Deputy

### WICHITA CONCRETE PIPE 2ND ADDITION

**BAUGHMAN COMPANY**  
315 Ellis St. Wichita, KS 67211 316-262-7271  
BaughmanCo.com



- = #4 REBAR W/ "BAUGHMAN" CAP (FOUND)
- ⊗ = #4 REBAR W/ "MASON" CAP (FOUND)
- ⊙ = #4 REBAR W/ "PEC" CAP (FOUND)
- ⊠ = #4 REBAR (FOUND)(ORIGIN UNKNOWN)
- ⊡ = #4 REBAR IN THIMBLE (FOUND)(ORIGIN UNKNOWN)
- = 1/2" IRON PIPE (FOUND)(ORIGIN UNKNOWN)
- △ = 3/4" IRON PIPE (FOUND)(ORIGIN UNKNOWN)
- ⊕ = BENCHMARK

BENCHMARK:  
BM-#1: SQUARE CUT ON NORTHWEST CORNER OF CURB INLET, 21.2'± NORTH AND 16.2'± EAST OF SE CORNER, LOT 1, BLOCK A, WICHITA CONCRETE PIPE 2ND ADDITION. ELEV. = 1318.81 NAVD88  
BM-#2: SQUARE CUT ON TOP OF CURB, WEST SIDE OF PARK PLACE, 69.6'± SOUTH AND 42.3'± WEST OF SW CORNER, LOT 1, BLOCK A, WICHITA CONCRETE PIPE 2ND ADDITION. ELEV. = 1318.68 NAVD88

NOTE:  
A MASTER DRAINAGE PLAN HAS BEEN DEVELOPED FOR THIS PLAT. ALL DRAINAGE EASEMENTS, RIGHTS-OF-WAY, AND RESERVES SHALL REMAIN AT ESTABLISHED GRADES (UNLESS MODIFIED WITH THE APPROVAL OF THE APPLICABLE CITY OR COUNTY ENGINEER) AND SHALL BE UNOBSTRUCTED TO ALLOW FOR THE CONVEYANCE OF STORMWATER IN ACCORDANCE WITH THE STORMWATER MANUAL.

- (D) = DESCRIBED
- (M) = MEASURED
- (P) = PLATTED
- (CD) = CALCULATED PER DESCRIBED INFO.
- (CM) = CALCULATED PER MEASURED INFO.
- (CP) = CALCULATED PER PLATTED INFO.

E:\Projects\Wichita Concrete Pipe 2nd Add\_23-09-2023\PlanDrawings\Wichita Concrete Pipe 2nd Add\_Mylar.dwg