

GRADING AND DRAINAGE PLAN

EASY CREDIT AUTO SALES ADDITION

WICHITA, SEDGWICK COUNTY, KANSAS

0 30 60
 DATE OF PREPARATION: 7 MAY 2007
 DATE OF TOPOGRAPHY: 25 MAY 2007
 CONTOUR INTERVALS = 1 FOOT

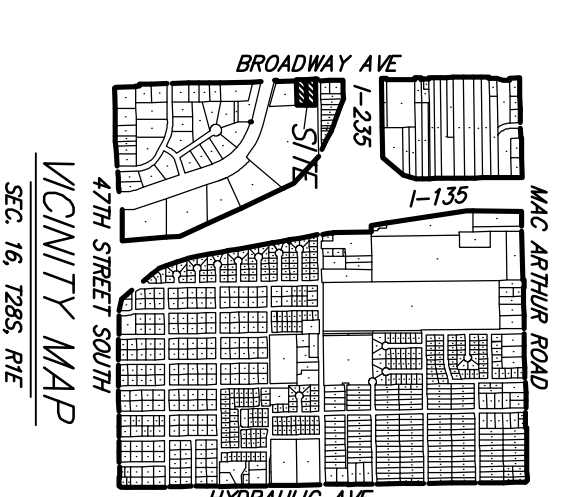


OWNER:
 EASY CREDIT AUTO SALES, INC
 333 S EMPORIA
 WICHITA, KS 67202
 393-1360

BENCHMARK:
 "D" CUT TOP CURB, SW CORNER OF
 44TH ST S & BROADWAY
 ELEV. = 1272.93 NGVD29

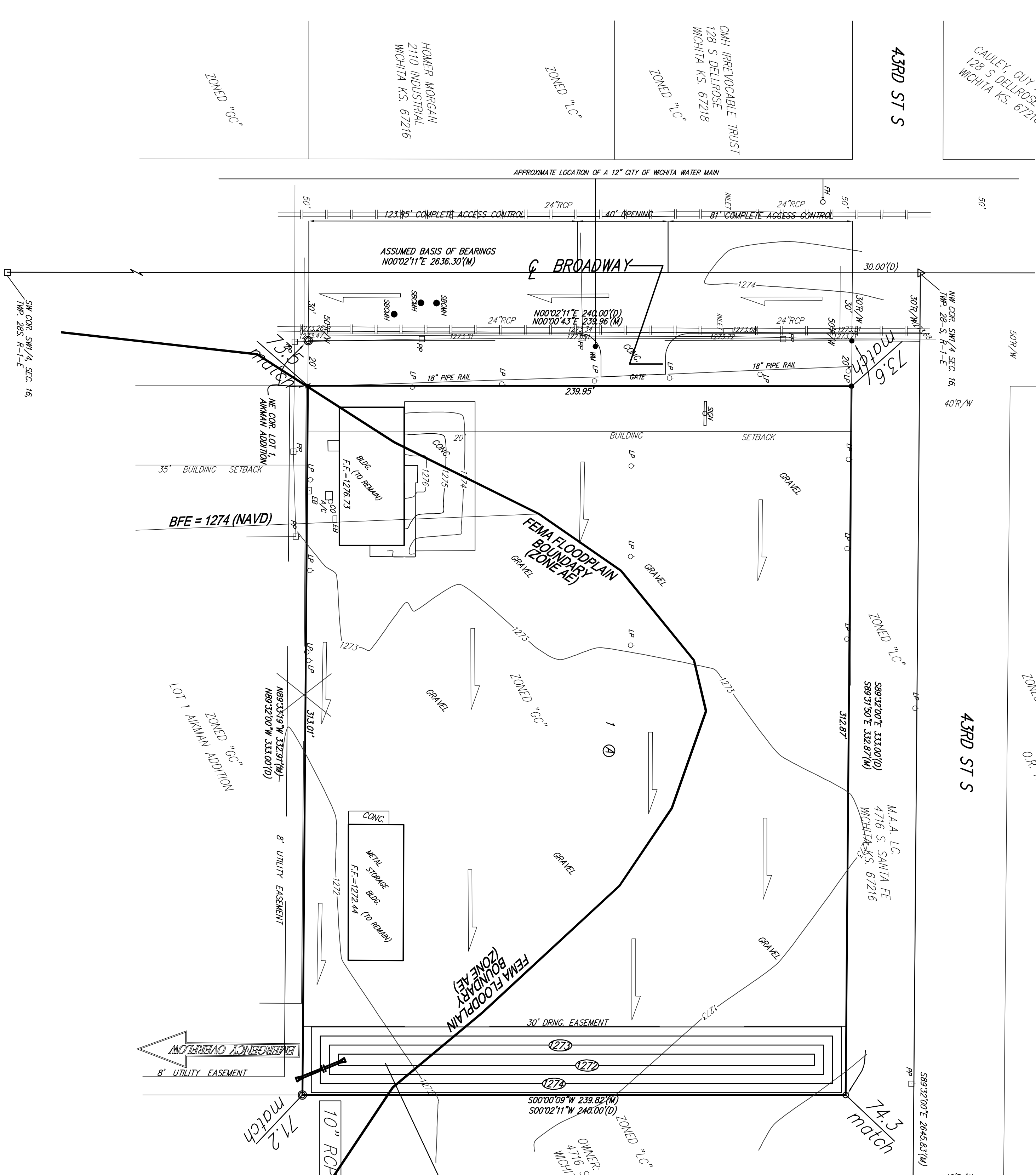
MINIMUM BUILDING PAD ELEVATIONS FOR LOWEST OPENING TO THE STRUCTURES			
LOT	BLOCK	ELEVATION	
1	A	1276.6	

SITE DRAINAGE			
Area = 1.72 acres			
Soil Type = C			
Tc = 15 min			
EXISTING CONDITIONS	DEVELOPED CONDITIONS	EXISTING CONDITIONS	DEVELOPED CONDITIONS
CN = 89	CN = 98	Qs = 1.4 cfs	Qs = 2.4 cfs
Qs = 2.0 cfs	Qs = 3.1 cfs	Q10 = 2.3 cfs	Q10 = 3.6 cfs
Q100 = 3.7 cfs	Q100 = 5.4 cfs		



PROPOSED POND (Bottom Elev. = 1272.0)			
STAGE	INFLOW	OUTFLOW	ELEVATION
5 yr	3.1 cfs	2.5 cfs	1273.6
10 yr	3.6 cfs	2.7 cfs	1273.7
100 yr	5.4 cfs	3.6 cfs	1274.5

PROPOSED POND		
ELEVATION	AREA (acres)	
1272	0.02	
1273	0.07	
1274	0.11	
1275	0.16	



NOTE:
 FEMA FLOODPLAIN BOUNDARIES ARE SCALED PER LOCATION PER FEMA MAP 20173C0505E FOR COMMUNITY OF CITY OF WICHITA, COMMUNITY #200328, EFFECTIVE DATE FEBRUARY 2, 2007.

NOTE:
 A KANSAS DIVISION OF WATER RESOURCES (DWR) FLOODPLAIN FILL PERMIT WILL BE REQUIRED BEFORE ANY GRADE CHANGES OCCUR WITHIN THE 100-YR FLOODPLAIN.