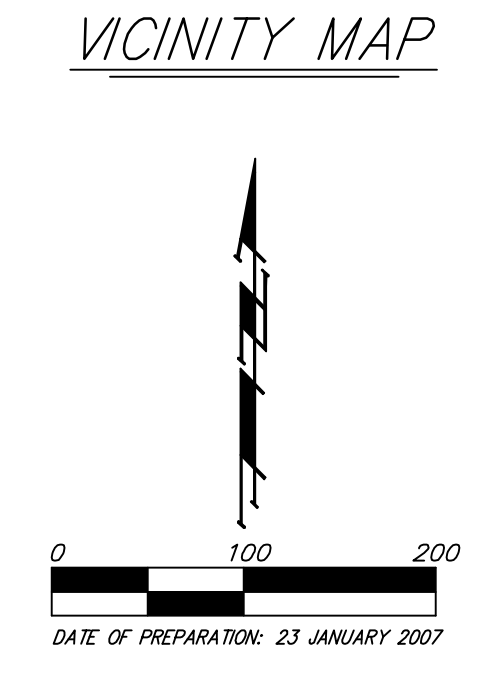
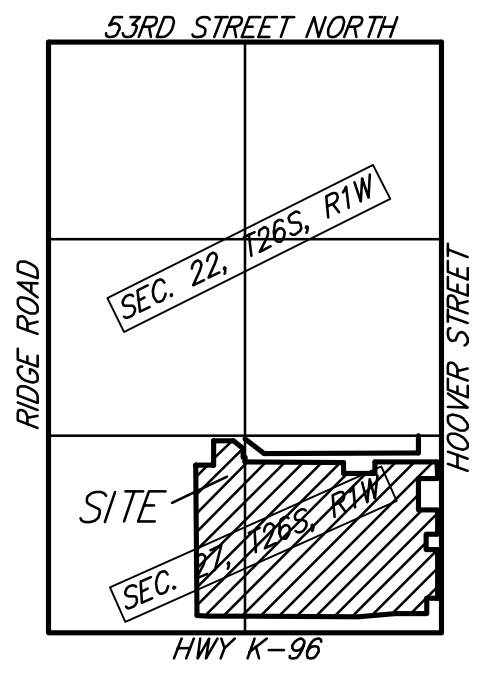
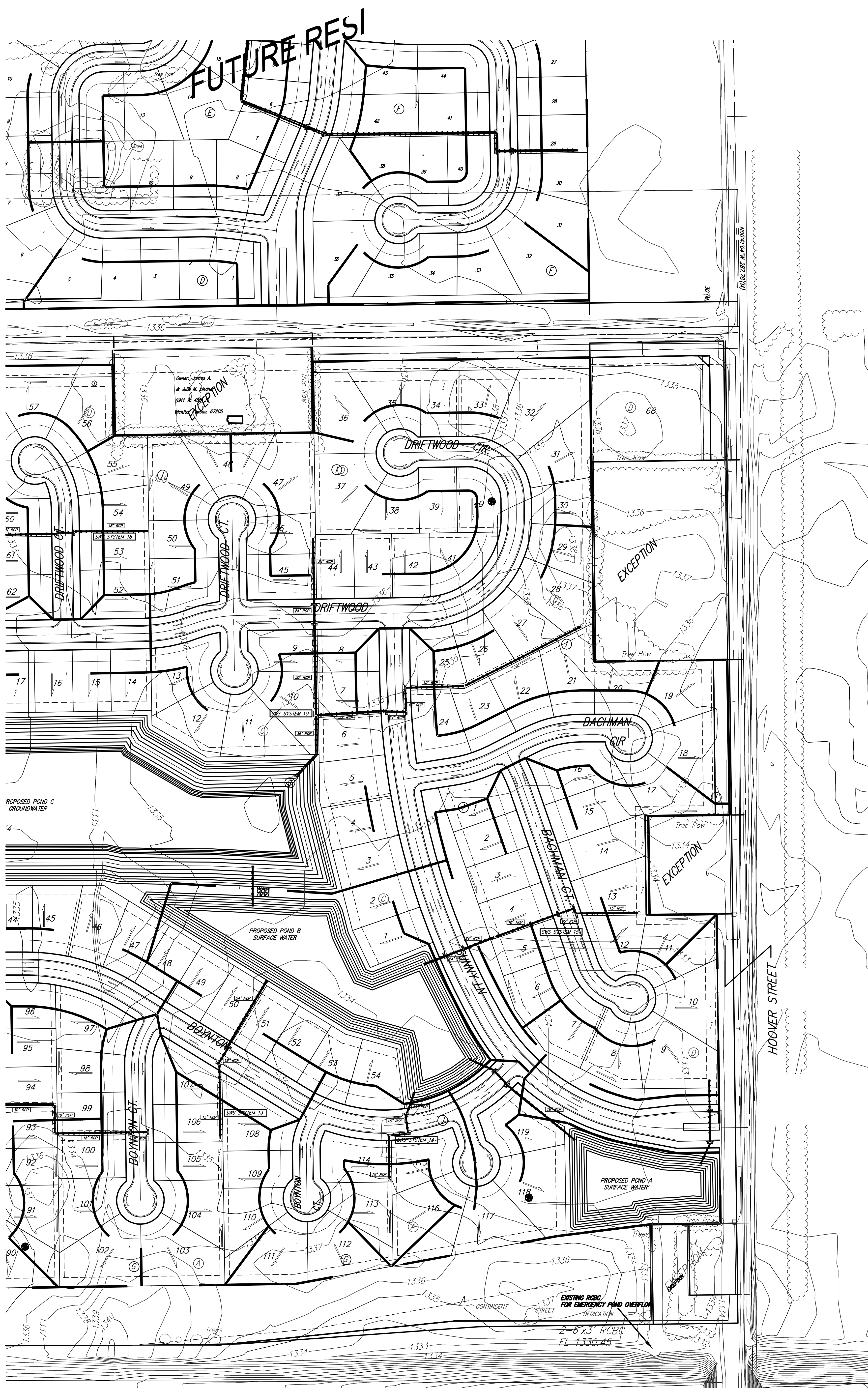


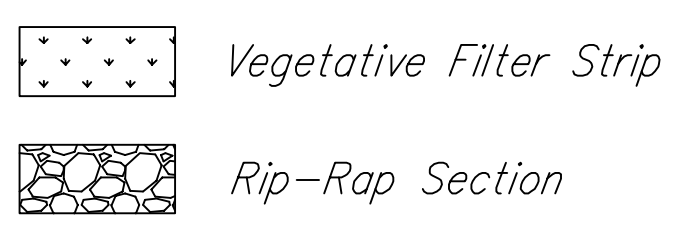
DRAINAGE PLAN EDGE WATER ADDITION WICHITA, SEDGWICK COUNTY, KANSAS



BENCHMARK:
 HOOPER 46TH ST. NORTH
 BENCHMARK NE CORNER OF INTERSECTION
 50.00 FT. ESE OF PP ON NW CORNER
 50.00 FT. NSE OF GAS LINE MARKER
 50.00 FT. NORTH OF GAS LINE MARKER
 14.50 FT. EAST OF CENTERLINE
 ELEVATION 1335.29 (NGVD 29)



Existing Basin ID	Area (acres)	Existing Flowrates			Developed Flowrates		
		2yr Intensity	5yr Intensity	100yr Intensity	2yr Intensity	5yr Intensity	100yr Intensity
1	0.9	0.9	1.1	3.4	1.4	1.8	4.2
2	2.3	2.2	2.9	9	3.6	4.6	10.7
3	2.1	2.0	2.7	8.0	3.0	4.2	9.8
4	2.0	1.9	2.6	7.7	3.1	4.0	9.3
5	2.0	1.9	2.6	7.7	3.1	4.0	9.3
6	0.6	0.6	0.8	2.3	0.9	1.2	2.8
7	1.0	1.0	1.3	3.8	1.6	2.0	4.6
8	3.4	3.3	4.3	13.0	5.3	6.8	15.8
9	1.1	1.1	1.4	4.2	1.7	2.2	5.1
10	1.7	1.6	2	7	2.7	3	7.9
11	0.8	0.8	1.0	3.1	1.3	1.6	3.7
12	1.4	1.3	2	5	2.2	3	6.5
13	4.1	3.9	5.2	15.7	6.4	8.2	19.0
14	2.9	2.8	3.7	11.1	4.6	5.8	13.5
15	1.5	1.4	1.9	5.7	2.4	3.0	7.0
16	0.8	0.8	1.0	3.1	1.3	1.6	3.7
17	1.2	1.1	1.5	5	1.9	2.4	5.6
18	2.6	2.5	3.3	10.0	4.1	5.2	12.1
19	1.8	1.7	2.3	6.9	2.8	3.6	8.4
20	5.9	5.6	7.5	23	9.3	11.8	27.4
21	1.9	1.8	2.4	7.3	3.0	3.8	8.8
22	1.0	0.9	1.2	4	1.5	1.9	4.5
23	1.3	1.2	1.6	5.7	2.3	3	7.1
24	0.9	0.9	1.1	3.4	1.4	1.8	4.2
25	1.2	1.1	1.5	4.6	1.9	2.4	5.6
26	0.8	0.8	1.0	3.1	1.3	1.6	3.7
27	2.3	2.2	2.9	8.8	3.6	4.6	10.7
28	2.9	2.8	3.7	11.1	4.6	5.8	13.5
29	1.1	1.1	1.4	4.2	1.7	2.2	5.1
30	8.1	7.6	10.3	31.0	12.7	16.3	37.8
31	1.7	1.6	2.2	6.5	2.7	3.4	7.9
32	1.3	1.2	1.6	5.7	2.3	3	7.1
33	4.2	4.0	5.4	16.1	6.6	8.4	19.5
34	16.1	15.4	20.6	61.7	25.3	32.3	74.8
35	3.0	2.8	3.8	11.4	4.7	6	13.8
36	1.0	1.0	1.3	3.8	1.6	2.0	4.6
37	1.1	1.1	1.4	4.2	1.7	2.2	5.1
38	1.8	1.7	2.3	6.9	2.8	3.6	8.4
39	1.6	1.5	2.0	6.1	2.5	3.2	7.4
40	1.8	1.7	2.3	6.9	2.8	3.6	8.4
41	2.7	2.6	3.4	10.3	4.2	5.4	12.5
42	2.0	1.9	2.5	7.5	3.1	4.0	9.1
43	0.6	0.6	0.7	2.2	0.9	1.2	2.7
44	2.4	2.3	3.1	9.3	3.8	4.9	11.3
45	0.5	0.5	0.6	1.9	0.8	1.0	2.3
46	2.4	2.3	3.1	9.2	3.8	4.8	11.1
47	1.1	1.1	1.4	4.2	1.7	2.2	5.1
48	3.5	3.4	4.5	13.4	5.5	7.0	16.3
49	1.2	1.1	1.5	4.5	1.8	2.4	5.5
50	4.5	4.3	5.7	17.1	7.0	8.9	20.7
51	2.1	2.0	2.6	7.9	3.2	4.1	9.6
52	0.4	0.4	0.5	1.6	0.7	0.9	2.0
53	2.5	2.4	3.2	9.7	4.0	5.1	11.6
54	4.7	4.5	6.0	18.1	7.4	9.3	22.0
55	1.2	1.1	1.5	4.6	1.9	2.4	5.6
56	2.2	2.1	2.7	8.2	3.4	4.3	10.0
57	1.0	0.9	1.2	3.7	1.5	1.9	4.5
58	3.4	3.2	4.0	12.8	5.3	6.7	15.6
59	3.1	3.0	4.0	12.0	4.9	6.2	14.6
60	1.0	1.0	1.3	3.8	1.6	2.0	4.6
61	0.8	0.7	1.0	3.0	1.2	1.6	3.6
62	1.1	1.1	1.4	4.2	1.7	2.2	5.1
63	1.8	1.7	2.3	6.9	2.8	3.6	8.4
64	1.7	1.6	2.1	6.3	2.6	3.3	7.7
65	3.1	3.0	4.0	11.9	4.9	6.2	14.6
66	0.9	0.9	1.1	3.4	1.4	1.8	4.2
67	1.3	1.2	1.7	5.0	2.0	2.6	6.0
68	2.3	2.2	2.9	8.8	3.6	4.6	10.7
69	2.2	2.1	2.8	8.4	3.5	4.4	10.2
70	6.2	5.9	7.9	23.8	9.7	12.4	28.8
71	1.9	1.8	2.4	7.3	3.0	3.7	8.6
72	3.7	3.5	4.7	14.0	5.7	7.3	17.0
73	1.4	1.4	1.8	5.5	2.2	2.9	6.6
74	1.0	1.0	1.3	3.8	1.6	2.0	4.6
75	0.9	0.9	1.1	3.4	1.4	1.8	4.1
76	10.3	9.8	13.1	39.4	16.1	20.6	47.7
77	0.6	0.6	0.8	2.4	1.0	1.3	2.9
78	1.0	0.9	1.2	3.7	1.5	1.9	4.4
79	1.5	1.4	1.9	5.6	2.3	2.9	6.7
80	4.2	4.0	5.4	16.1	6.6	8.4	19.5
81	2.5	2.4	3.2	9.5	3.9	5.0	11.5
82	0.6	0.6	0.8	2.3	0.9	1.2	2.8
83	1.9	1.7	2.3	6.9	2.8	3.6	8.4
84	4.2	4.0	5.4	16.1	6.6	8.4	19.5
85	1.6	1.6	2.1	6.3	2.6	3.3	7.6
86	1.6	1.5	2.0	6.0	2.5	3.2	7.4
87	1.7	1.6	2.1	6.4	2.6	3.4	7.8
88	1.5	1.4	1.9	5.7	2.4	3.0	7.0
89	2.6	2.4	3.2	9.6	3.9	5.0	11.6
90	19.7	18.9	25.2	75.5	30.9	39.5	91.5
91	1.0	0.9	1.2	3.7	1.5	2.0	4.5
92	3.2	3.1	4.1	12.3	5.0	6.4	14.9
93	0.9	0.9	1.1	3.4	1.4	1.8	4.2
94	1.4	1.3	1.7	5.3	2.2	2.7	6.4
95	2.1	2.0	2.7	8.0	3.3	4.2	9.8
96	3.6	3.4	4.6	13.7	5.6	7.2	16.6
97	1.0	1.0	1.3	3.8	1.6	2.0	4.6
98	1.5	1.5	1.9	5.8	2.4	3.0	7.1
99	1.7	1.6	2.2	6.5	2.7	3.4	7.9
100	1.7	1.6	2.1	6.4	2.6	3.3	7.7
101	1.6	1.6	2.1	6.4	2.6	3.3	7.7
102	1.7	1.6	2.1	6.4	2.6	3.3	7.7
103	0.7	0.7	0.9	2.8	1.1	1.5	3.4
104	1.7	1.6	2.1	6.4	2.6	3.3	7.7
105	1.3	1.2	1.6	4.8	2.0	2.5	5.8
106	2.4	2.3	3.1	9.4	3.8	4.9	11.3
107	1.4	1.3	1.8	5.4	2.2	2.9	6.5
108	1.6	1.5	2.0	6.1	2.5	3.2	7.4
109	0.8	0.8	1.0	3.1	1.3	1.6	3.7
110	1.0	1.0	1.3	4.0	1.6	2.0	4.6
111	3.0	2.8	3.8	11.3	4.6	5.9	13.7
112	0.8	0.8	1.0	3.1	1.3	1.6	3.7
113	0.6	0.5	0.7	2.1	0.9	1.1	2.6
114	2.3	2.2	2.9	8.8	3.6	4.6	10.7
115	0.7	0.7	0.9	2.8	1.1	1.5	3.4
116	4.6	4.4	5.9	17.7	7.3	9.3	21.5
117	1.7	1.6	2.2	6.5	2.7	3.4	7.8
118	0.8	0.8	1.0	3.1	1.3	1.6	3.7
119	6.3	6.0	8.0	24.1	9.9	12.6	29.3
120	3.0	2.8	3.8	11.3	4.6	5.9	13.7
121	0.7	0.7	0.9	2.8	1.1	1.5	3.4
TOTAL	278.0	266	355	1,065	437	558	1,291



HOVWAY K-96 per Road Book 1377-Page 307