

FINAL PLAT
AZMI ADDITION
 AN ADDITION TO SEDGWICK COUNTY, KANSAS.

LAND SURVEYOR'S CERTIFICATE AND DESCRIPTION

I, THE UNDERSIGNED, LICENSED PROFESSIONAL SURVEYOR IN KANSAS, DO HEREBY CERTIFY THAT UNDER MY SUPERVISION, THE FOLLOWING DESCRIBED TRACT OF LAND WAS SURVEYED BY ARMSTRONG LAND SURVEY, P.A., ON OR ABOUT DECEMBER 20, 2023 AND THAT THE ACCOMPANYING FINAL PLAT PREPARED AND ALL THE MONUMENTS SHOWN HEREIN EXIST AND THEIR POSITIONS ARE CORRECTLY SHOWN, UNLESS OTHERWISE NOTED, TO THE BEST OF MY KNOWLEDGE AND IS DESCRIBED AS FOLLOWS:

LEGAL DESCRIPTION:

A tract in the Northeast Quarter of Section 34, Township 25 South, Range 1 East of the 6th P.M., Sedgwick County, Kansas described as:

The South 822.12 feet of the North 1644.95 feet of the East Half of the Northeast Quarter of Section 34, Township 25 South, Range 1 East of the 6th P.M., Sedgwick County, Kansas, EXCEPT the South 762.12 feet of the East 600 feet thereof.

ALL PUBLIC EASEMENTS AND DEDICATIONS BEING VACATED BY VIRTUE OF K.S.A. 12-512b, AS AMENDED.

DONALD C. ARMSTRONG, RLS #780
 ARMSTRONG LAND SURVEY, P.A.

PLANNING COMMISSION CERTIFICATE

THIS PLAT OF "AZMI ADDITION" HAS BEEN SUBMITTED TO AND APPROVED BY THE WICHITA-SEDGWICK COUNTY METROPOLITAN AREA PLANNING COMMISSION, WICHITA, KANSAS.
 DATED THIS ____ DAY OF _____, 20__.

WICHITA-SEDGWICK COUNTY METROPOLITAN AREA PLANNING COMMISSION

BY: _____
 ROBERT DOOL, CHAIR

ATTEST: _____
 SCOTT A. WADLE, SECRETARY

COUNTY COMMISSIONER'S CERTIFICATE

STATE OF KANSAS) SS
 SEDGWICK COUNTY)

THIS PLAT APPROVED AND ALL DEDICATIONS SHOWN HEREON, IF ANY, ACCEPTED BY THE BOARD OF COUNTY COMMISSIONERS OF SEDGWICK COUNTY, KANSAS, THIS ____ DAY OF _____, 20__.

_____, CHAIRMAN
 RYAN BATY, FOURTH DISTRICT

ATTEST: _____ COUNTY CLERK
 KELLY B. ARNOLD

OWNER'S CERTIFICATE AND DEDICATION

STATE OF KANSAS) SS
 SEDGWICK COUNTY)

KNOW ALL MEN BY THESE PRESENTS THAT I, THE UNDERSIGNED, HAVE CAUSED THE LAND DESCRIBED IN THE SURVEYOR'S CERTIFICATE TO BE PLATTED INTO A LOT, BLOCK, AND STREET TO BE KNOWN AS "AZMI ADDITION", AN ADDITION TO SEDGWICK COUNTY, KANSAS. THE STREET IS HEREBY DEDICATED TO AND FOR THE USE OF THE PUBLIC. THE DRAINAGE EASEMENT IS HEREBY GRANTED TO THE PUBLIC AS INDICATED FOR DRAINAGE PURPOSES. ACCESS CONTROLS ARE HEREBY GRANTED TO THE APPROPRIATE GOVERNING BODY AS INDICATED ON THE FACE OF THE PLAT. LOTS PLATTED HEREIN MAY BE SUBJECT TO FUTURE GRADING PLANS. A MASTER DRAINAGE PLAN HAS BEEN DEVELOPED FOR THIS PLAT. ALL DRAINAGE EASEMENTS, RIGHTS-OF-WAY, AND RESERVES SHALL REMAIN AT ESTABLISHED GRADES (UNLESS MODIFIED WITH THE APPROVAL OF THE APPLICABLE CITY OR COUNTY ENGINEER) AND SHALL BE UNOBSTRUCTED TO ALLOW FOR THE CONVEYANCE IN ACCORDANCE WITH THE STORMWATER MANUAL.

RAISSA AZMI REVOCABLE FAMILY TRUST

RAISSA AZMI, TRUSTEE

STATE OF KANSAS) SS
 SEDGWICK COUNTY)

THIS INSTRUMENT WAS ACKNOWLEDGED BEFORE ME, THIS ____ DAY OF _____, 20__, BY RAISSA AZMI, TRUSTEE.

SEAL OR STAMP _____, NOTARY PUBLIC

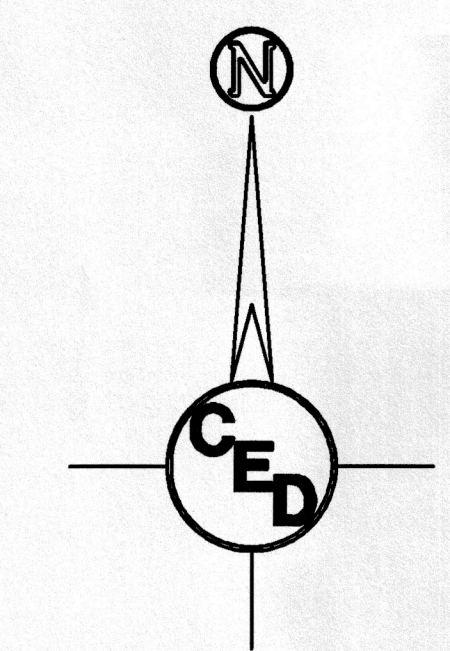
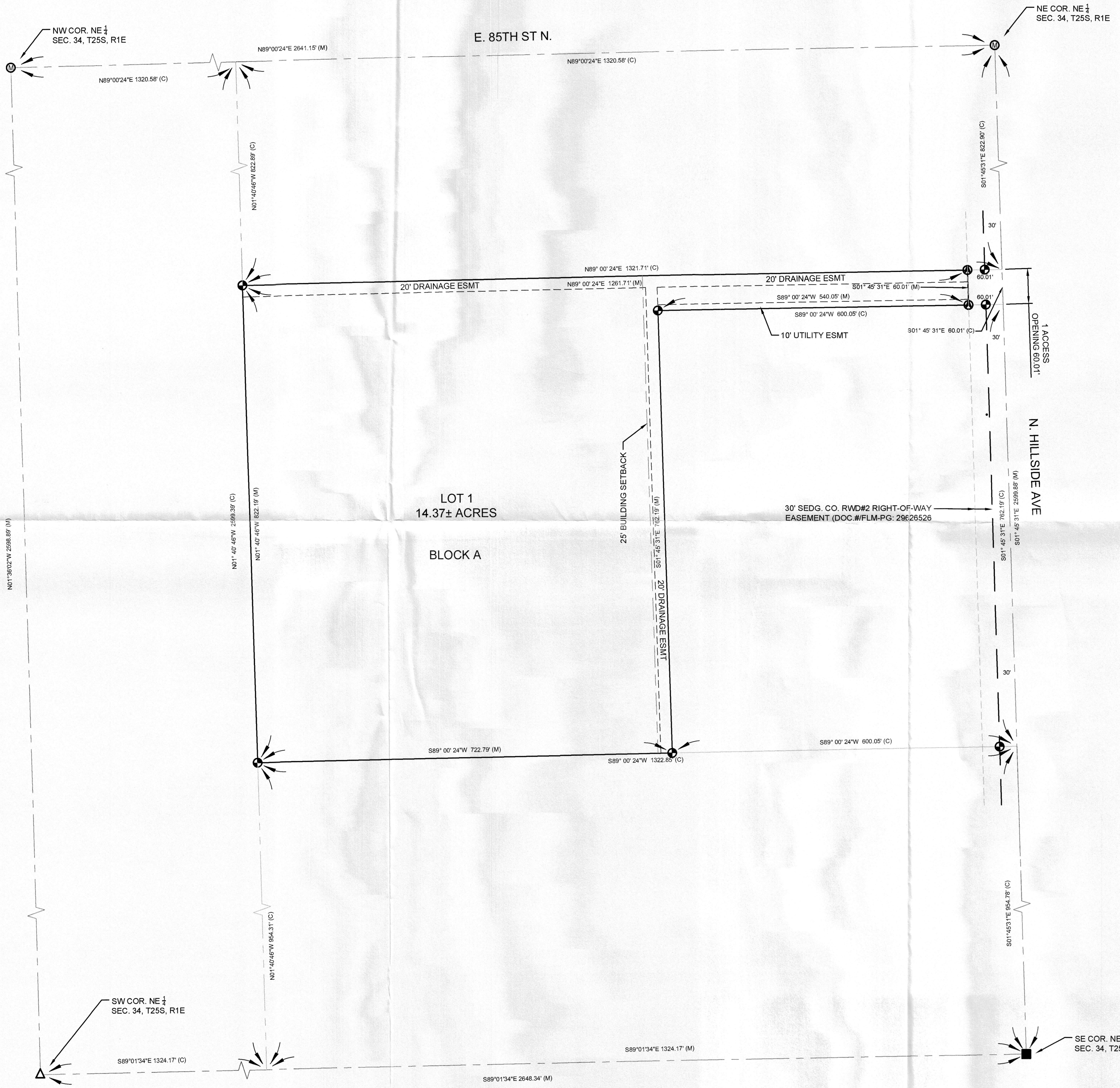
MY APPOINTMENT EXPIRES: _____

COUNTY SURVEYOR CERTIFICATE

STATE OF KANSAS) SS
 SEDGWICK COUNTY)

REVIEWED IN ACCORDANCE WITH K.S.A. 58-2005 ON THIS ____ DAY OF _____, 20__.

_____, DEPUTY COUNTY SURVEYOR
 TRICIA L. ROBELLO, PS #1246



LEGEND

- ⊙ - "ARMSTRONG" capped rebar set
- ⊕ - "ARMSTRONG" capped rebar found
- - #6 rebar found
- ⊙ - "MIKEC" capped rebar found
- △ - stone found
- M - measured distance
- P - plat distance
- D - deed distance
- C - calculated distance

BENCHMARK:
 CHISELED SQUARE CUT ON THE SOUTHWEST CORNER OF THE SOUTH HEADWALL OF ROBC LOCATED APPROXIMATELY 17 FT SOUTH AND 129 FT WEST OF THE NORTHEAST CORNER OF THE NORTHEAST QUARTER OF SEC 34, T25S, R1E. ELEV. = 1400.81 (NAVD88)

OWNER:
 RAISSA AZMI REVOCABLE FAMILY TRUST
 4094 N. EDINBURG CIR.
 WICHITA, KS 67220

SURVEYOR:
 ARMSTRONG LAND SURVEY, P.A.
 1601 E. HARRY ST.
 WICHITA, KANSAS 67211
 (316) 263-0082

NOTE: BOUNDARY SURVEY COMPLETED BY ARMSTRONG LAND SURVEY, P.A. ON OR ABOUT DECEMBER 20, 2023.

CERTIFIED ENGINEERING DESIGN, P.A.



1935 WEST MAPLE STREET
 WICHITA, KANSAS 67213
 PH: (316) 262-8808
 FAX: (316) 262-1669

SHEET 1
 TOTAL 1

FILE LOCATION: G:\Users\Arceli\OneDrive - CED\Projects\2023\20233340\DWG\Armi Plat.dwg, TAB NAME: FP, USER: Engineer, 1 - SAVED: 3/18/2024, 3:16 PM, PLOTTED: 3/21/2024, 9:46 AM