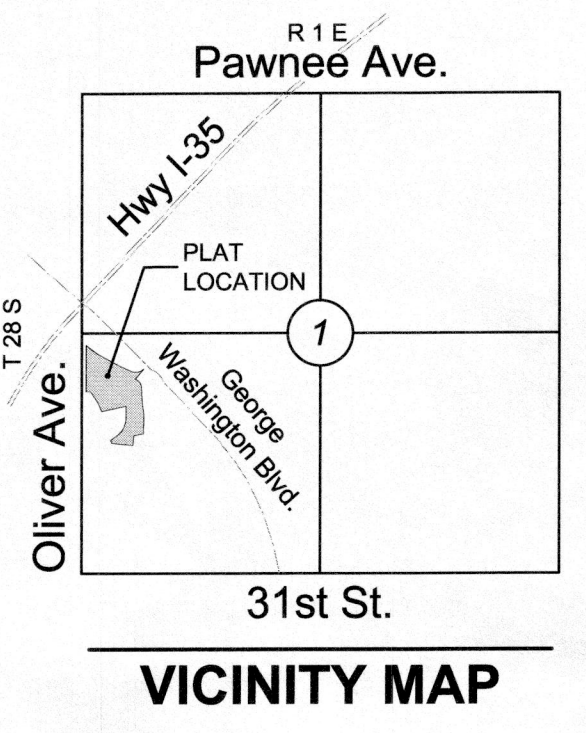


FINAL TRACING REC'D
RECEIVED MAR 29 2024

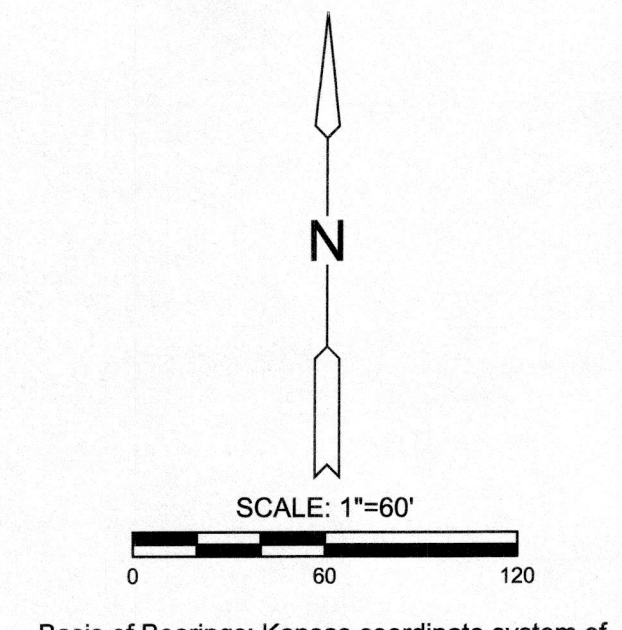
CITY HALL - ENGINEERING
MAIL STOP 1-71
Arecti@kansas.gov
FOR YOUR FILES



FINAL PLAT

BUNKER HILL ADDITION

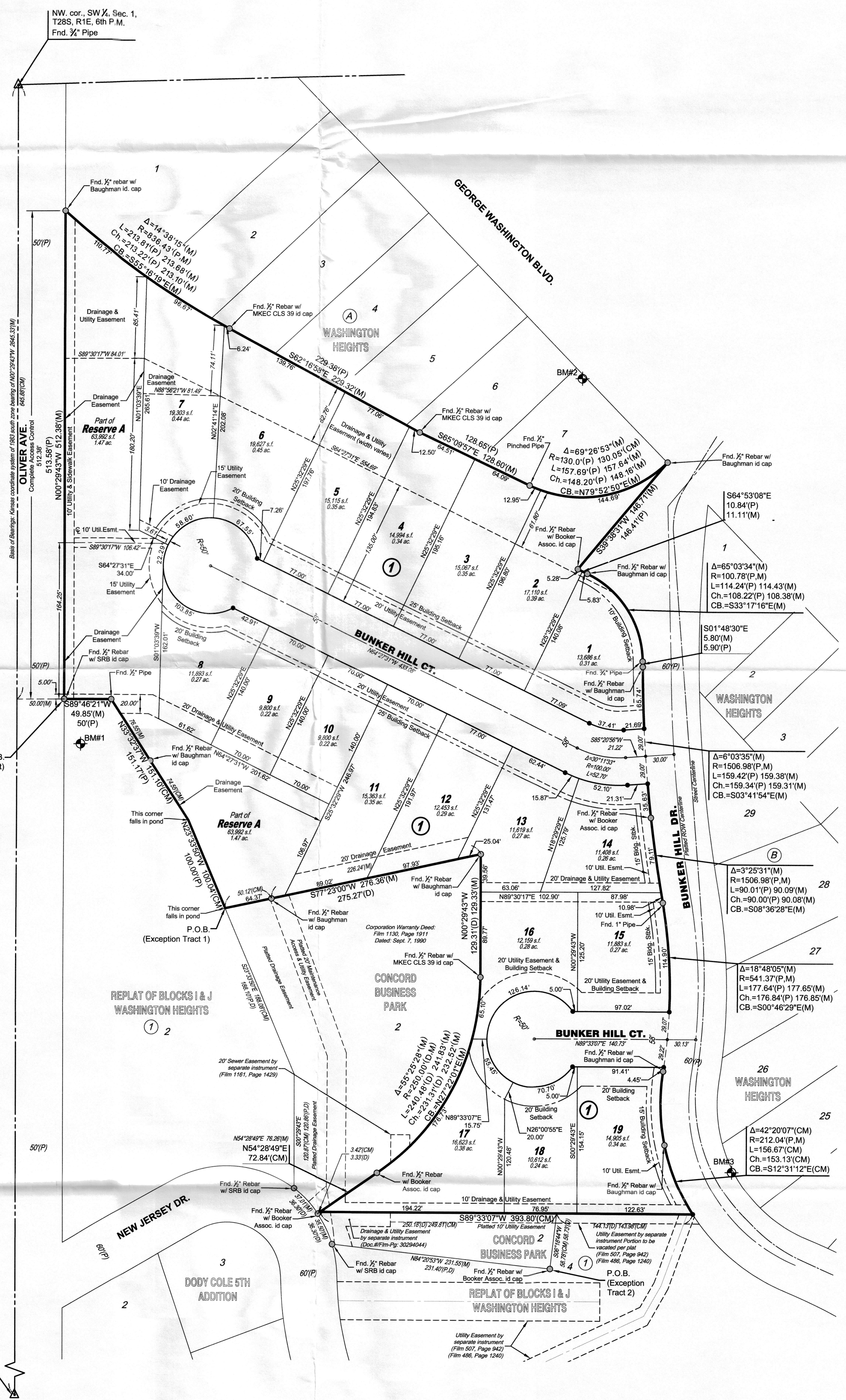
AN ADDITION TO WICHITA, SEDGWICK COUNTY, KANSAS



Basis of Bearings: Kansas coordinate system of 1983 south zone bearing of N00°29'43"W on the west line of Southwest Quarter, Section 1, Township 28 South, Range 1 East of the Sixth Principal Meridian, Sedgwick County, Kansas. This plat is surveyed and platted on NAD83 using Kansas state plane south zone coordinates, modified to the surface, having a combined adjustment scale factor of 1.0001200144

LEGEND

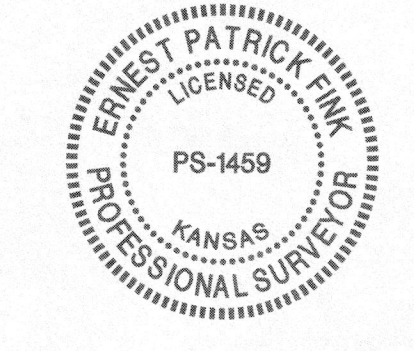
- Date of Survey: 12/27/2023
- △ = Section Corner Monument Found
 - = Found monument (see annotation for type)
 - = Set 1/2" rebar w/ MKEC CLS 39 id. cap
 - ⊕ = Benchmark
 - (M) = Measured
 - (P) = Platted
 - (D) = Described or Deeded
 - (CM) = Calculated from Measurement
 - Drng. = Drainage
 - Util. = Utility
 - Esmt. = Easement
 - ① = Lot
 - ⑦ = Block



BENCHMARKS

- BM#1 PK Nail and washer in top of curb lying 721.35 feet south and 71 feet east of the NW corner of the SE 1/4, Sec. 1, T28S, R1E and being northeasterly of the north entrance to parking lot on Oliver Ave. Elev. = 1322.835 NAVD88
- BM#2 Chiseled "*" in concrete lying 319.0 feet south and 589.45 feet east of the NW corner of the SE 1/4, Sec. 1, T28S, R1E and being in a parking lot northeast of the building located at 2835 S. George Washington Blvd. Elev. = 1318.282 NAVD88
- BM#3 Chiseled "*" in top of curb lying 4 feet north of a sidewalk to address 2934 Bunker Hill Drive, Wichita, KS 67210. Elev. = 1324.486 NAVD88

MINIMUM PAD ELEVATIONS (LOWEST OPENINGS)		
LOT(S)	BLOCK	ELEVATION (NAVD88)
1-7	1	1318.0
8-13	1	1320.0



C:\Users\patrik\OneDrive\Documents\Bunker Hill Addition\Bunker Hill Addition.dwg 1/28/2024 10:13:19 AM PST
 Bunker Hill Addition (SUB2024-00002)