

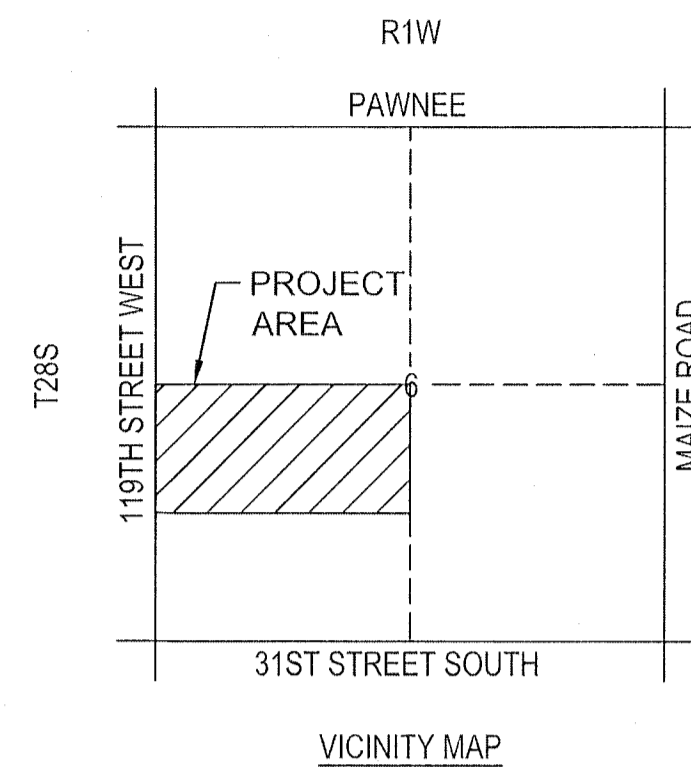


# BRIDGER PAWNEE ADDITION

WICHITA, SEDGWICK COUNTY, KANSAS

IN THE N1/2, SW1/4, SECTION 6, TOWNSHIP 28 SOUTH, RANGE 1 WEST OF THE SIXTH PRINCIPAL MERIDIAN

## FINAL PLAT



### LEGEND

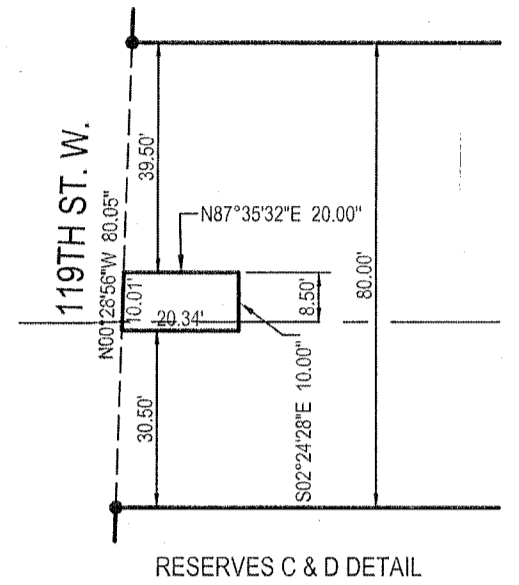
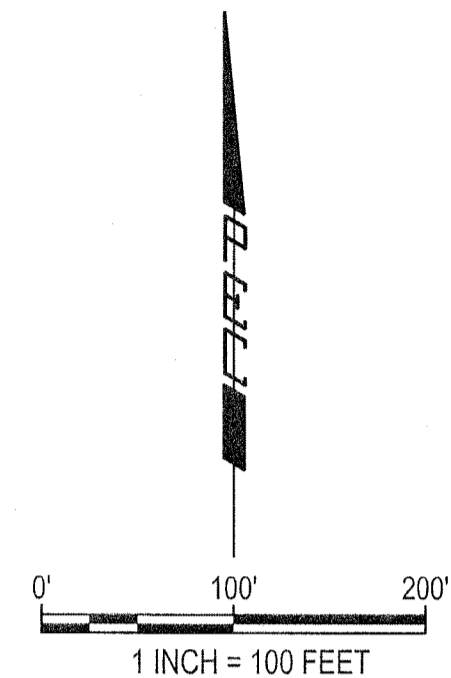
- △ FOUND SECTION CORNER AS NOTED
- SET 1/2" REBAR WITH PEC CAP
- (M) MEASURED
- (P) PLATTED
- (C.A.C.) COMPLETE ACCESS CONTROL
- (B.S.L.) BUILDING SETBACK LINE

### BENCH MARK LIST

- BM #201  
DISC ON TOP OF WEST END OF NORTH HEADWALL OF RCBC, 120' EAST OF 119TH STREET WEST, ON 31ST STREET, FROM SKYWAY WEST 4TH ADDITION (OFF-SITE)  
ELEVATION = 1344.96 (NAVD 88)
- BM #202  
TOP OF T-POST AT GROUND SURFACE, 70 FT. NORTH OF SW CORNER OF N 1/2, SW 1/4, SEC. 6 AND 34 FT. EAST OF CENTERLINE OF 119TH ST.  
ELEVATION = 1346.97 (NAVD 88)
- BM #203  
CHISELED "\*" ON SOUTH END 12" RCP, WEST SIDE 119TH ST. W/18" CONCRETE PILLARS N. AND S. OF DRIVE  
ELEVATION = 1334.41 (NAVD 88)

### MINIMUM PAD TABLE

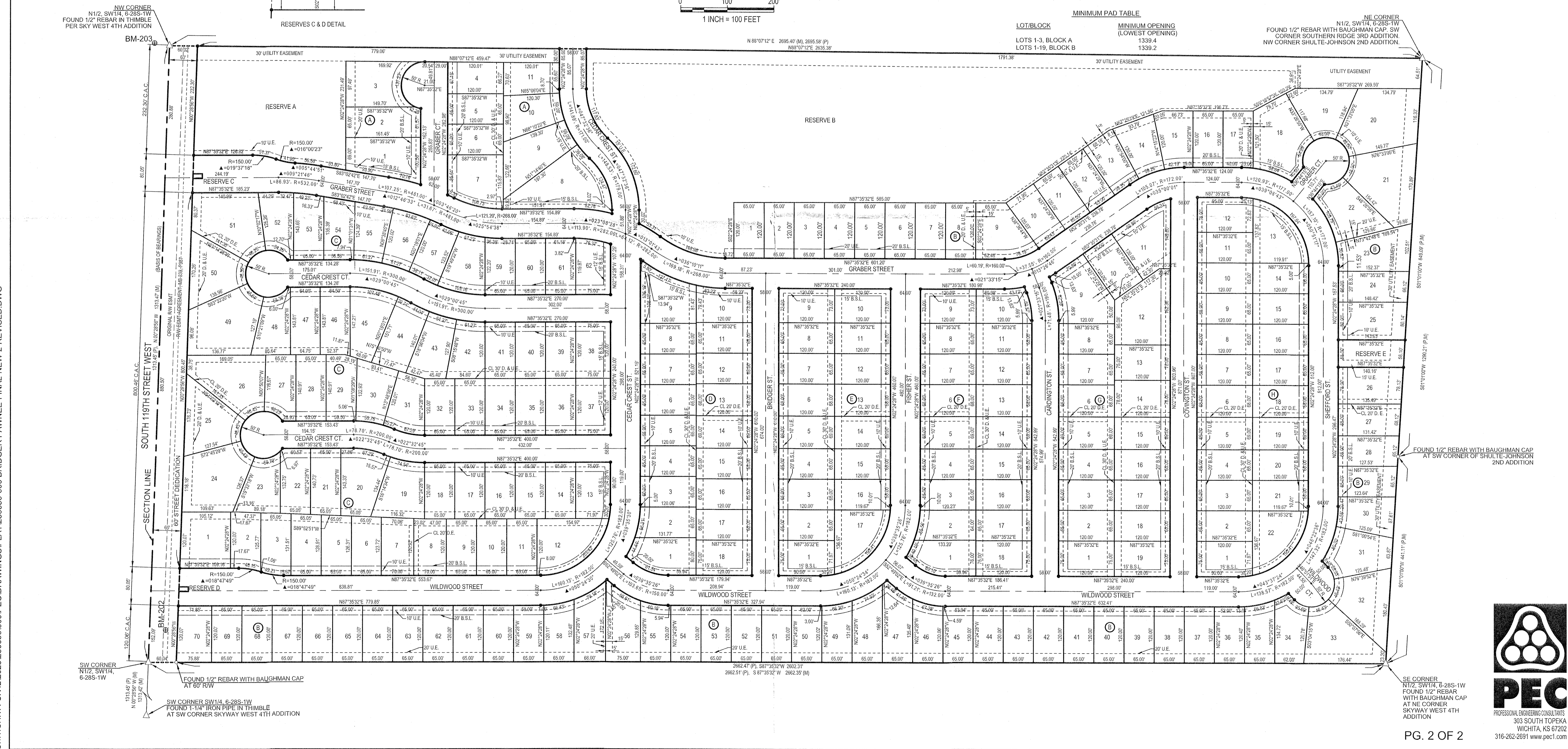
LOT/BLOCK	MINIMUM OPENING (LOWEST OPENING)
LOTS 1-3, BLOCK A	1339.4
LOTS 1-19, BLOCK B	1339.2



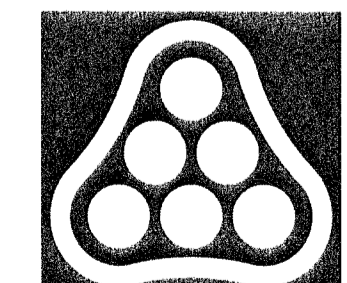
NW CORNER N1/2, SW1/4, 6-28S-1W FOUND 1/2" REBAR IN THIMBLE PER SKY WEST 4TH ADDITION

NE CORNER N1/2, SW1/4, 6-28S-1W FOUND 1/2" REBAR WITH BAUGHMAN CAP, SW CORNER SOUTHERN RIDGE 3RD ADDITION, NW CORNER SHULTE-JOHNSON 2ND ADDITION.

SAVED 6/12/2024 6:44:49 AM BY BILL SEASON PLOTTED 6/12/2024 8:18:12 AM BY BILL SEASON U:\WICHITA-CIVIL\2023\230656\000\PECDRAWINGS\PLAT1230656-000 BRIDGER PAWNEE FINAL-NEW-2-REVISED.DWG



SE CORNER N1/2 SW1/4, 6-28S-1W WITH BAUGHMAN CAP AT NE CORNER SKYWAY WEST 4TH ADDITION



**PEC**  
PROFESSIONAL ENGINEERING CONSULTANTS  
303 SOUTH TOPICKA  
WICHITA, KS 67202  
316-262-2691 www.pec1.com