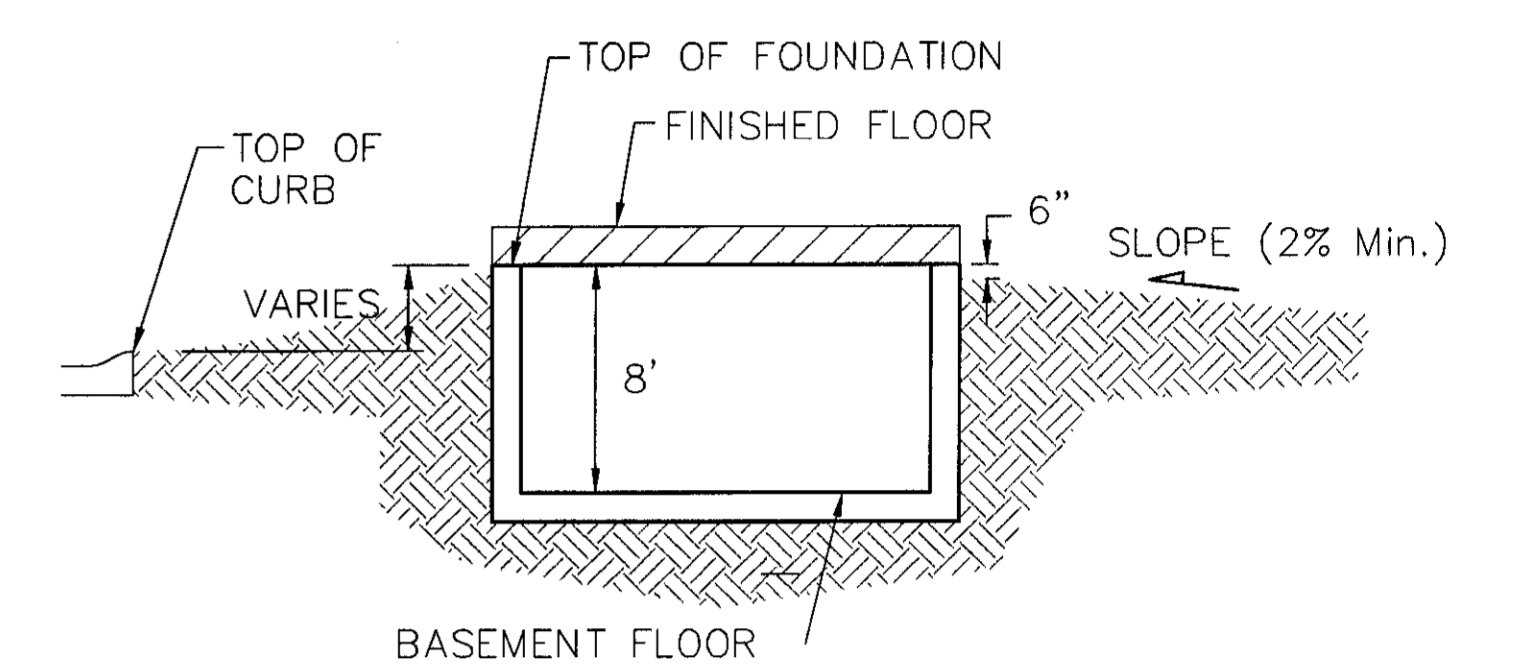
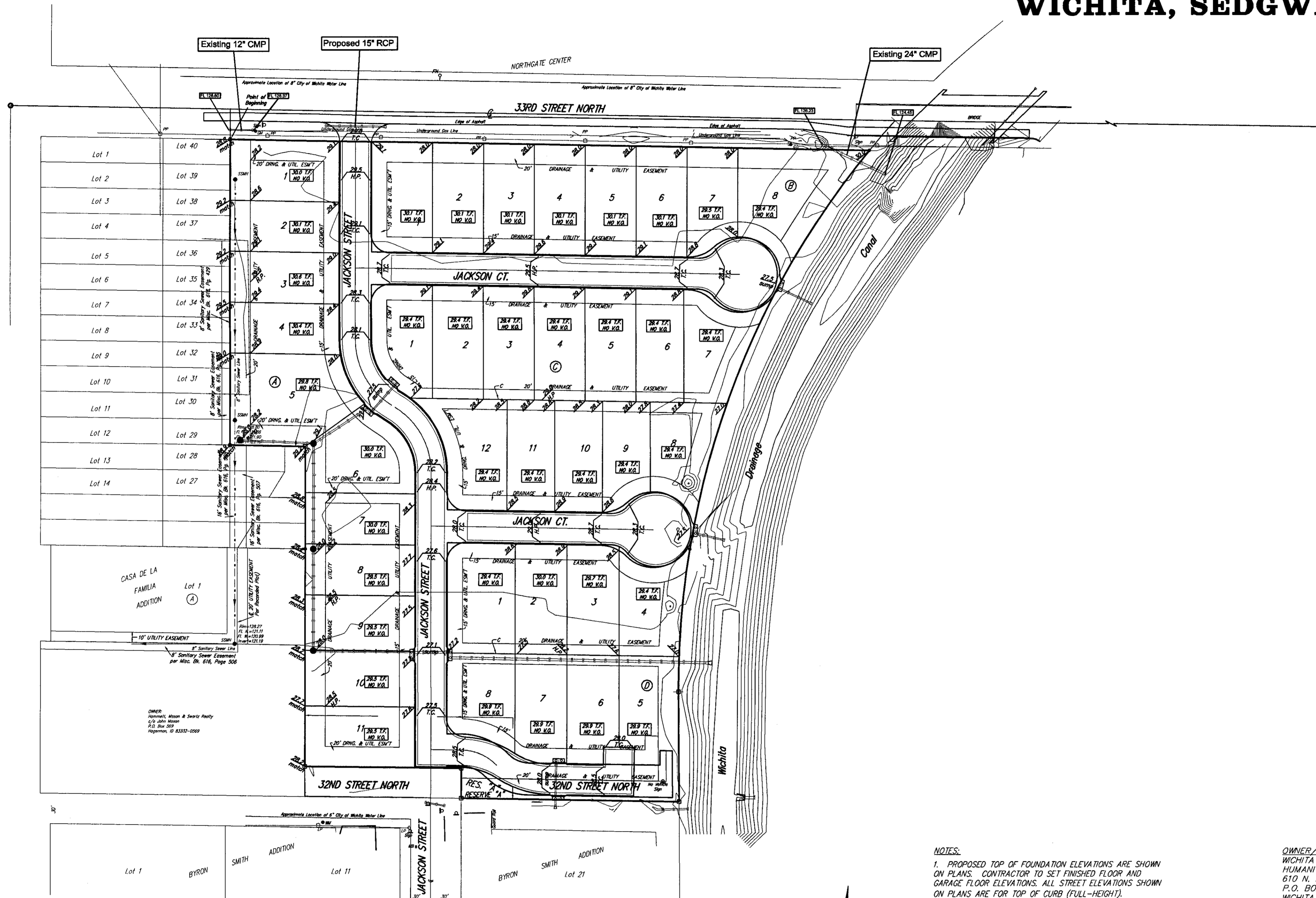
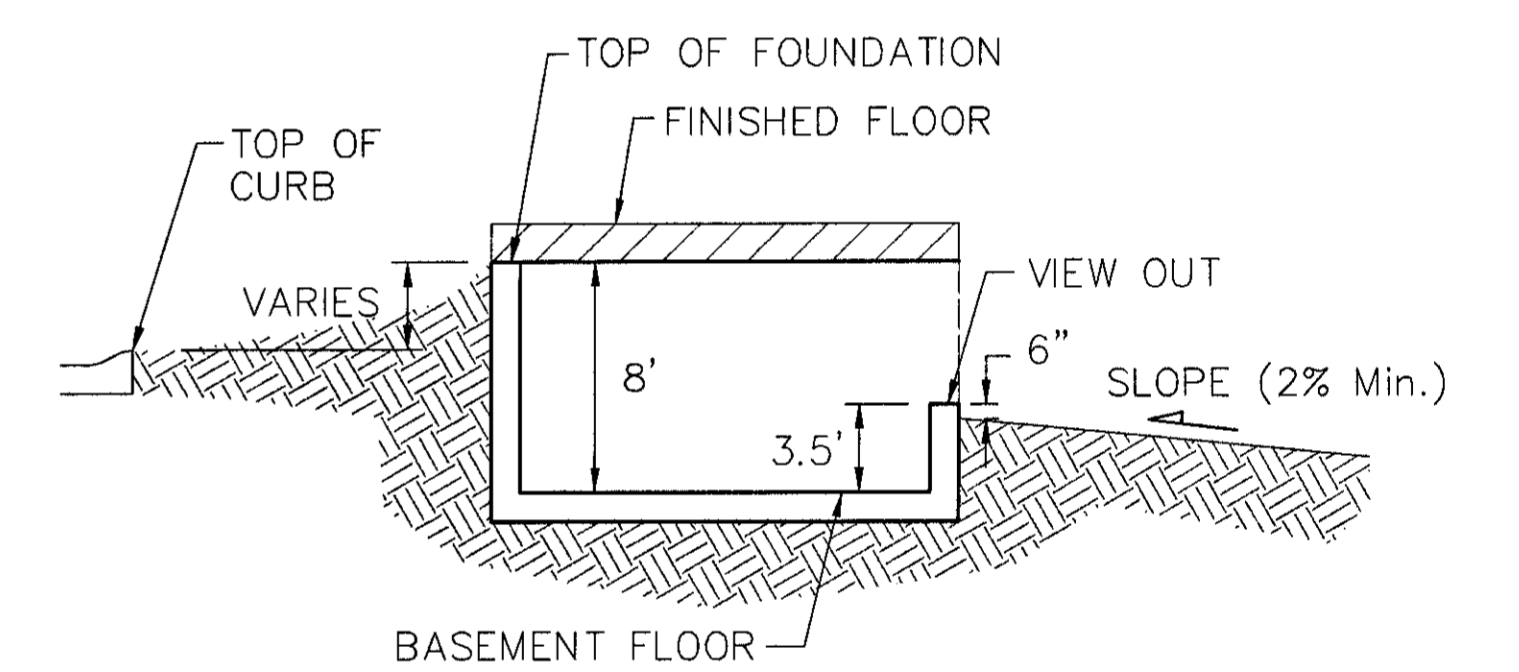


MASTER GRADING PLAN
SAVINA 5TH ADDITION
 WICHITA, SEDGWICK COUNTY, KANSAS



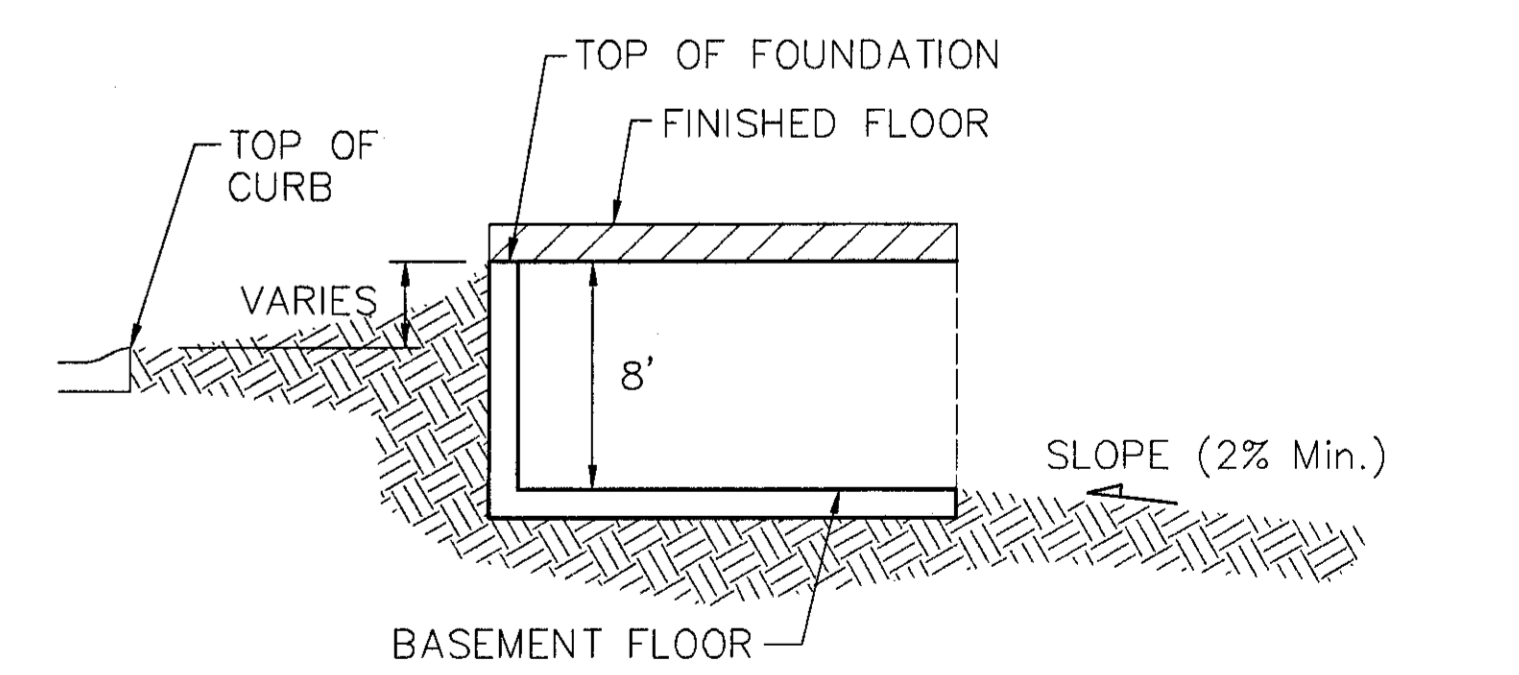
TYPICAL NON-VIEW OUT DETAIL

NO SCALE



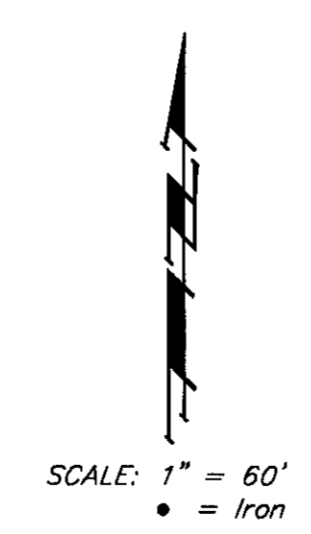
TYPICAL VIEW OUT DETAIL

NO SCALE



TYPICAL WALK OUT DETAIL

NO SCALE



- NOTES:**
1. PROPOSED TOP OF FOUNDATION ELEVATIONS ARE SHOWN ON PLANS. CONTRACTOR TO SET FINISHED FLOOR AND GARAGE FLOOR ELEVATIONS. ALL STREET ELEVATIONS SHOWN ON PLANS ARE FOR TOP OF CURB (FULL-HEIGHT).
 2. THIS GRADING PLAN IS DESIGNED WITH VIEW-OUTS AND WALK-OUTS. ELEVATIONS SHOWN AS XXX V.O. DEPICT VIEW-OUT STRUCTURES. ELEVATIONS SHOWN AS XXX W.O. DEPICT WALK-OUT STRUCTURES.
 3. LOT DIMENSIONS HAVE BEEN OMITTED ON THIS PLAN. REFER TO THE RECORDED PLAT FOR FINAL DIMENSION, EASEMENT, & BUILDING SETBACK INFORMATION.
 4. A DRAINAGE PLAN HAS BEEN DEVELOPED FOR THIS SUBDIVISION AND IS ON FILE WITH THE CITY OF WICHITA, KANSAS. DRAINAGE INTENT SHALL REMAIN AS DEPICTED OR AS MODIFIED WITH THE APPROVAL OF THE CITY ENGINEER OF THE CITY OF WICHITA, KANSAS. NO OBSTRUCTIONS WHICH IMPEDS THE FLOW OF THIS DRAINAGE PLAN SHALL BE ALLOWED.
 5. NOTE: No FEMA SFHA exists on this property as of March 05 2007.

OWNER/DEVELOPER:
 WICHITA HABITAT FOR HUMANITY, INC.
 610 N. MAIN
 P.O. BOX 114
 WICHITA, KS 67201
 LINDA STEWART
 EXECUTIVE DIRECTOR
 PHONE: (316) 264 1108

LEGAL DESCRIPTION:
 A REPLAT OF LOT 1, SAVINA 4TH ADDITION, WICHITA, KANSAS.

BENCHMARK:
 ARKANSAS AND 33RD ST. NORTH
 COW BENCHMARK
 32.00 FT SOUTH OF CENTERLINE OF 33RD ST. GOING EAST
 22.00 FT EAST OF CENTERLINE OF ARKANSAS
 ELEV= 1317.21 (NGVD 29)

COW DISK NE BRIDGE HEADWALL
 33RD AND DRAINAGE CANAL
 ELEV= 1320.98 (NGVD29)



Baughman		GRAY'S 6TH ADDITION SUBDIVISION GRADING PLAN WICHITA, KANSAS	
Baughman Company, P.A. 315 15th St. Wichita, KS 67211 F 3162637721 F 3162620149			
ENGINEERING SURVEYING PLANNING LANDSCAPE ARCHITECTURE			
PROJECT NUMBER	DESIGN NBW	DRAWN ATD	
REVISIONS	APPROVED	DATE 08/09/07	
	SCALE noted		
	SHEET		1 OF 1