

WADDINGTON

1

2

3

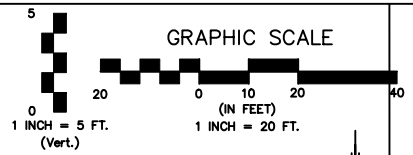
WESTERN GARDENS

4

5

6

7



CAUTION!!!
Underground Gas

10' DRAINAGE AND UTILITY EASEMENT

Sta. 0+00 Line No. 1
Connect to Existing
24" Storm Sewer
Using 10" ADS
Dual Wall Snap Coupling.
Contractor to Verify
Depth & Location Prior
To Sewer Construction

Sta. 0+15
Install 12" "Nyloplast"
Inline Drain
Top Elev.=143.57
FL Elev.=139.44

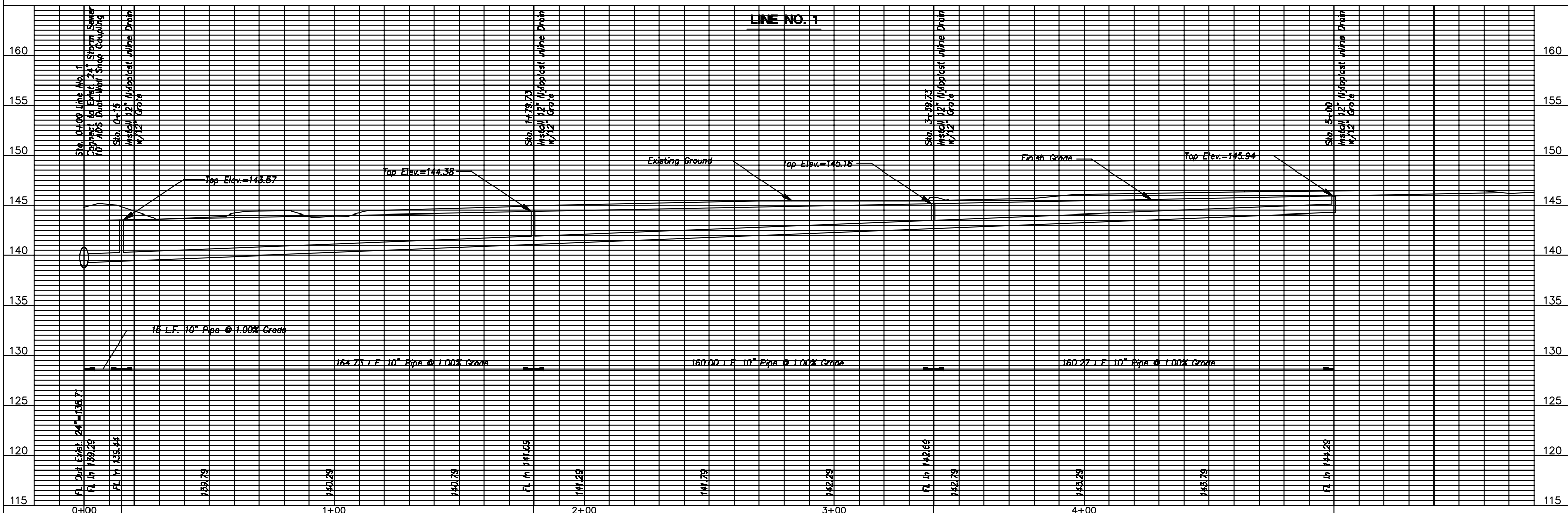
Sta. 1+79.73
Install 12" "Nyloplast"
Inline Drain
Top Elev.=144.38
FL Elev.=141.09

Sta. 3+39.73
Install 12" "Nyloplast"
Inline Drain
Top Elev.=145.16
FL Elev.=142.69

Sta. 5+00
Install 12" "Nyloplast"
Inline Drain
Top Elev.=145.94
FL Elev.=144.29



FOUR₃H ADDITION



No.	Date	By	Approved

FOUR H ADDITION
STORM SEWER IMPROVEMENTS
STORM SEWER LINE 1
CITY OF WICHITA, KANSAS
JAMES ARMOUR, P.E. - CITY ENGINEER
(CHANGE ORDER) C.O.W. Project # 472-82312/D.C.A. # 765923

POE & ASSOCIATES, INC.
CONSULTING ENGINEERS
5940 E. Central, Suite 200 Wichita, KS 67208-4242
Phone 316/685-4114 FAX 316/685-4444



PRELIM
Designed By: T. Austin
Drawn By: S. Schmidt
Poe Job No.: 1825
Date: July 2005
Sheet 4 of 20