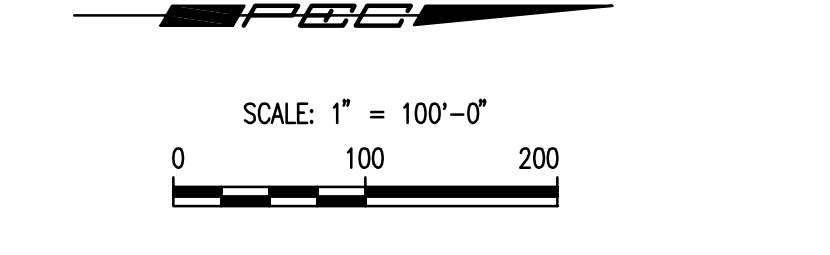
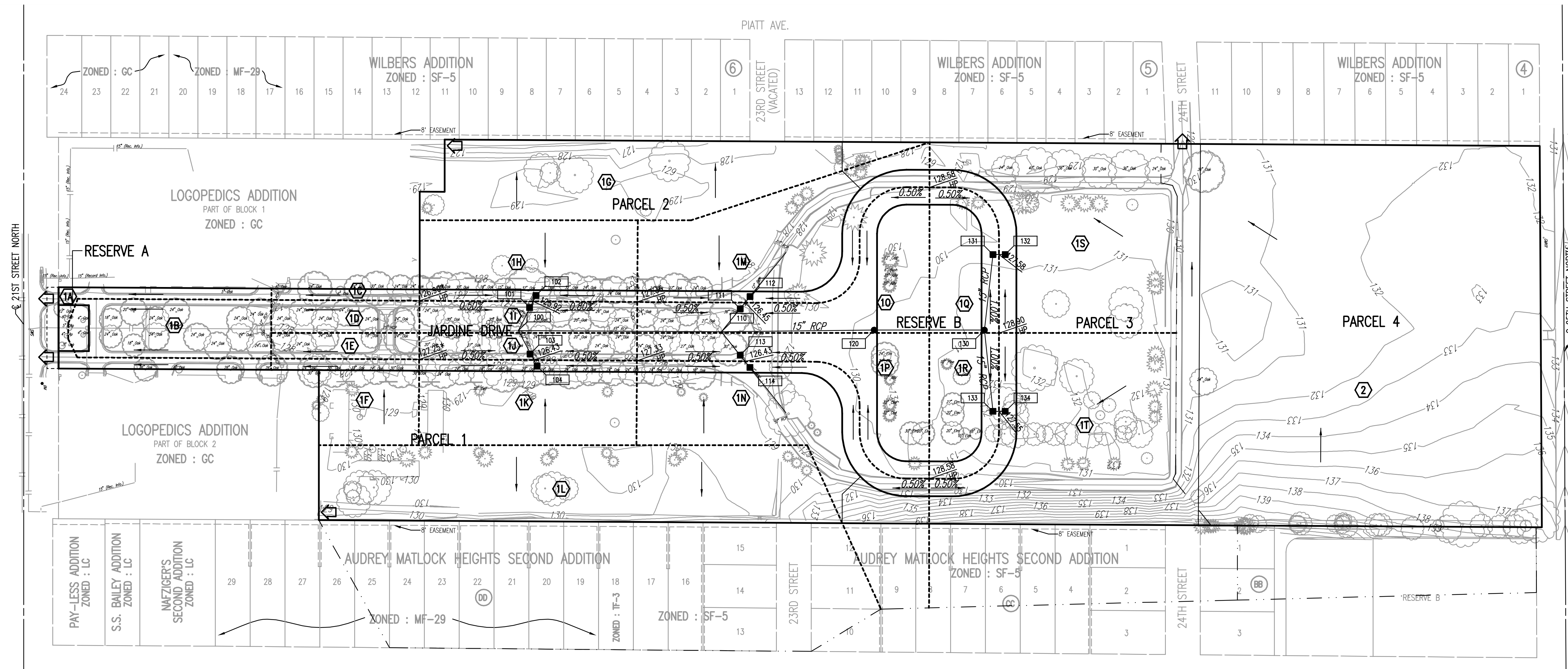


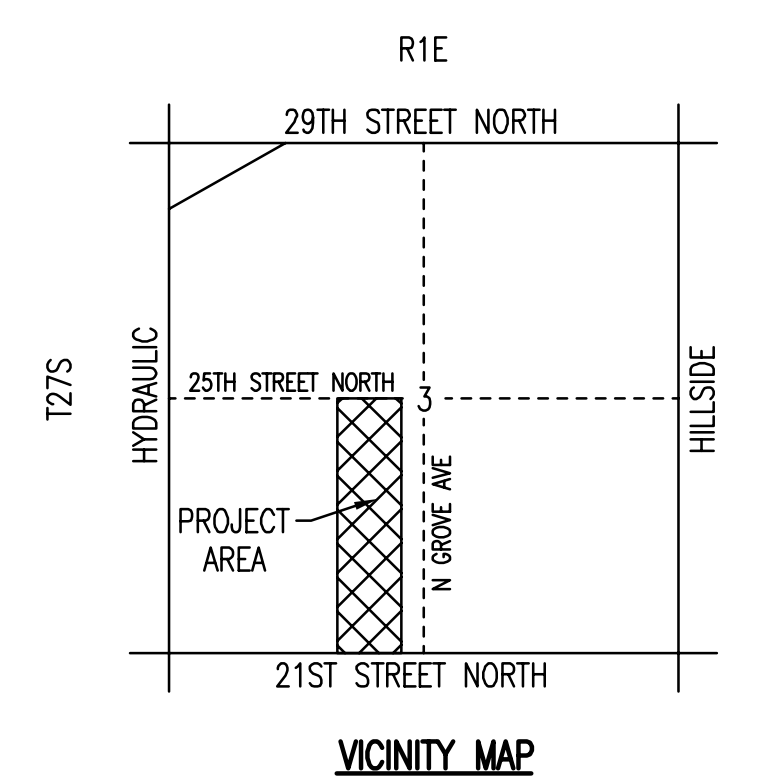
DRAINAGE PLAN

21ST STREET KIDS AND FAMILY EMPOWERMENT

AN ADDITION TO WICHITA,
SEDGWICK COUNTY, KANSAS



- LEGEND**
- A BASIN IDENTIFIER
 - MAJOR BASIN BOUNDARY
 - - - MINOR BASIN BOUNDARY
 - ▶ MAJOR STORM WATER OVERFLOW (Q100)
 - MINOR STORM WATER FLOW (Q2)
 - 130 NODE IDENTIFIER
 - + 52.01 SPOT ELEVATION
 - + 52.01 HP HIGH POINT ELEVATION
 - STORM SEWER AND INLET
 - STORM SEWER AND MANHOLE
- SEE SUPPORTING CALCULATIONS FOR HYDROLOGY



BENCHMARKS:

BM #1:
CHISELED "B" ON BACK OF CURB ON THE NORTH SIDE OF 21ST ST. N. ±50'
EAST OF C JARDINE NORTH BOUND.
ELEV. = 127.54 CITY DATUM

BM #2:
3" T POST 0.5' BELOW GROUND CENTERED BETWEEN JARDINE NORTH AND SOUTH
BOUND ±60' NORTH OF C CROSS OVER ROAD ±620' NORTH OF C 21ST ST.
NORTH
ELEV. = 127.275 CITY DATUM

BM #3:
T POST ±3" BELOW SURFACE, ±20' NORTH OF NORTH BACK OF CURB 23RD ST,
±C JARDINE.
ELEV. = 128.630 CITY DATUM

BM #4:
T POST BELOW SURFACE, ±20' NORTH OF NORTH BACK OF CURB OF 24TH ST.,
±C JARDINE EXTENDED.
ELEV. = 130.265 CITY DATUM

BM #5:
CHISELED "B" TOP BACK OF CURB AT N.E. CORNER OF MADISON & 25TH ST. N.,
NORTH CURB RETURN AT NORTH CORNER OF WHEEL CHAIR RAMP.
ELEV. = 133.115 CITY DATUM

C:\2005\05389\DD\dwg\05389-Drainage_BLB 08-26-2005 03:38:47 pm
 1'-100.00'
 0 1 2 3 4 5 6 7 8 9 10 11 12 13 14 15 16 17 18 19 20 21 22 23 24 25 26 27 28 29