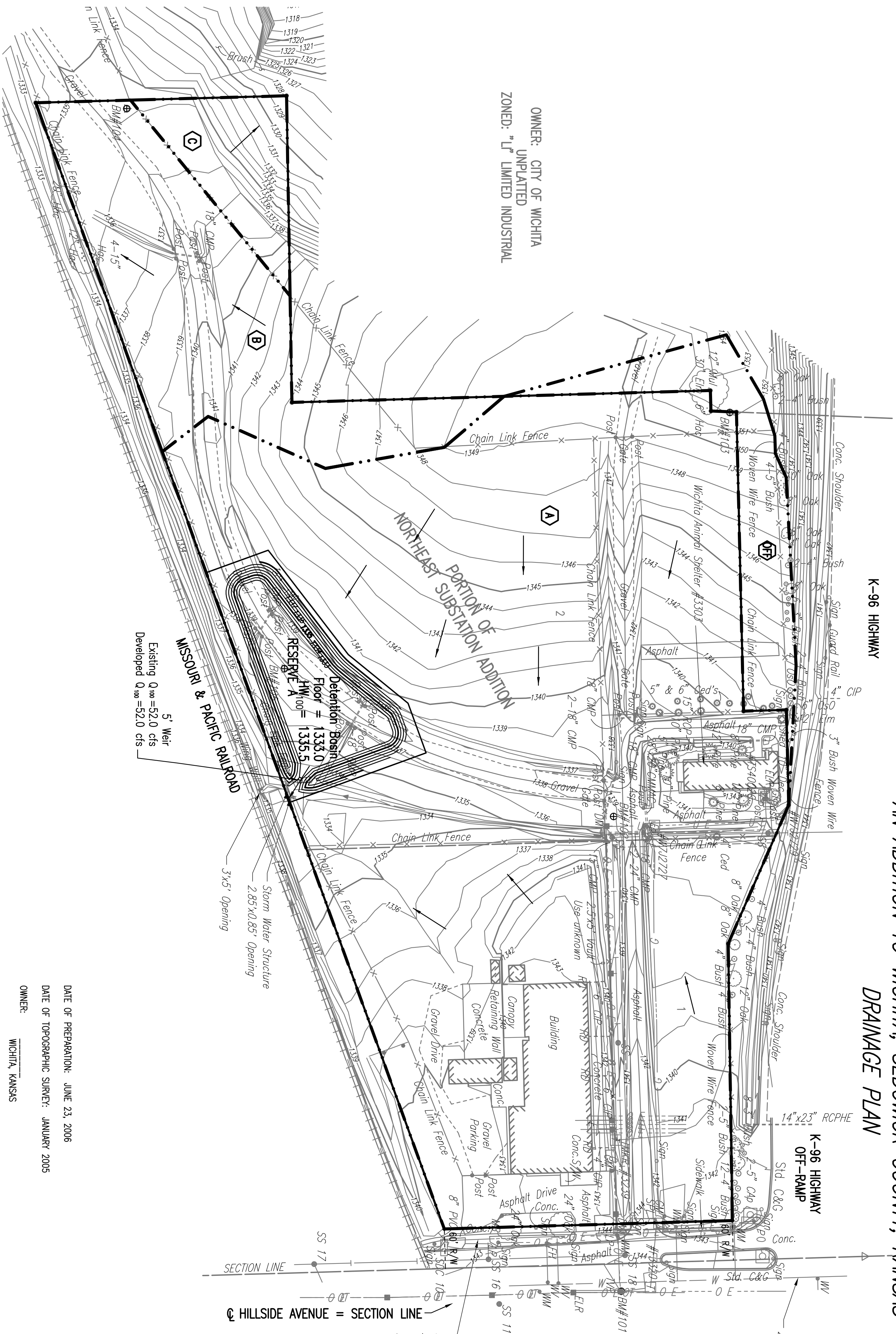


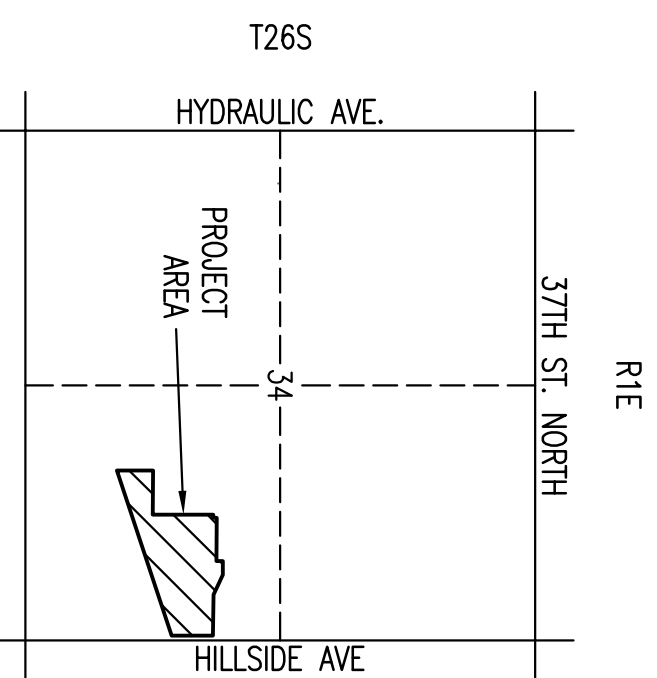
ANIMAL SERVICES CAMPUS

AN ADDITION TO WICHITA, SEDGWICK COUNTY, KANSAS

DRAINAGE PLAN



OWNER: CITY OF WICHITA
 UNPLATTED
 ZONED: "I" LIMITED INDUSTRIAL



DATE OF PREPARATION: JUNE 23, 2006
 DATE OF TOPOGRAPHIC SURVEY: JANUARY 2005

OWNER: WICHITA, KANSAS
 SUBDIVIDER: PROFESSIONAL ENGINEERING CONSULTANTS, P.A.
 303 S. TOPEKA
 WICHITA, KS 67202

BENCHMARKS:

- BM #101 - Found Railroad Spike in W face of nighttime power pole on E side of Hillside Avenue near #3320 N. Hillside entrance drive
MSL Elev. = 1344.795
- BM #102 - Set "T" Post 27.5' S. of center entrance drive and 36.20' E. of E face of Animal Shelter Building
MSL Elev. = 1338.81
- BM #103 - Set "T" Post 10' S. of CP#1003, NW property corner
MSL Elev. = 1352.125
- BM #104 - Set "T" Post 13' E. of W line and 140' N. of SW property corner
MSL Elev. = 1335.465
- BM #105 - Set "T" Post 57' N. of fence line along S property corner line 22' S. of Hou Road 275' E. MNW of property corner #102
MSL Elev. = 1338.32