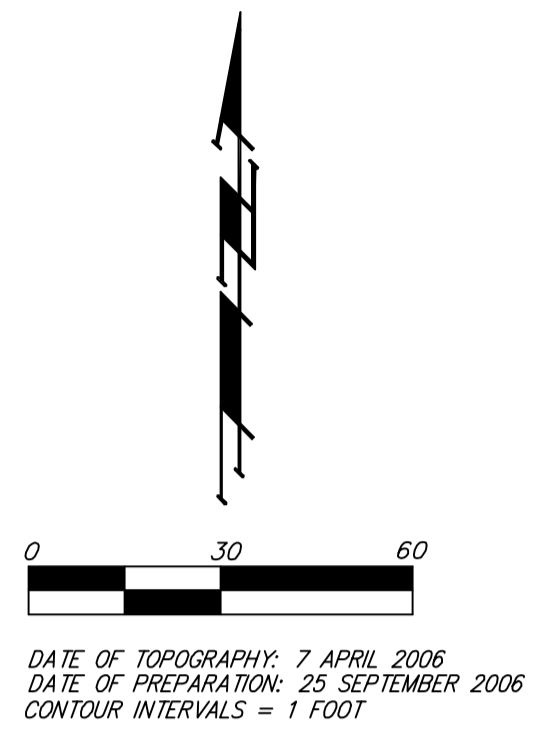
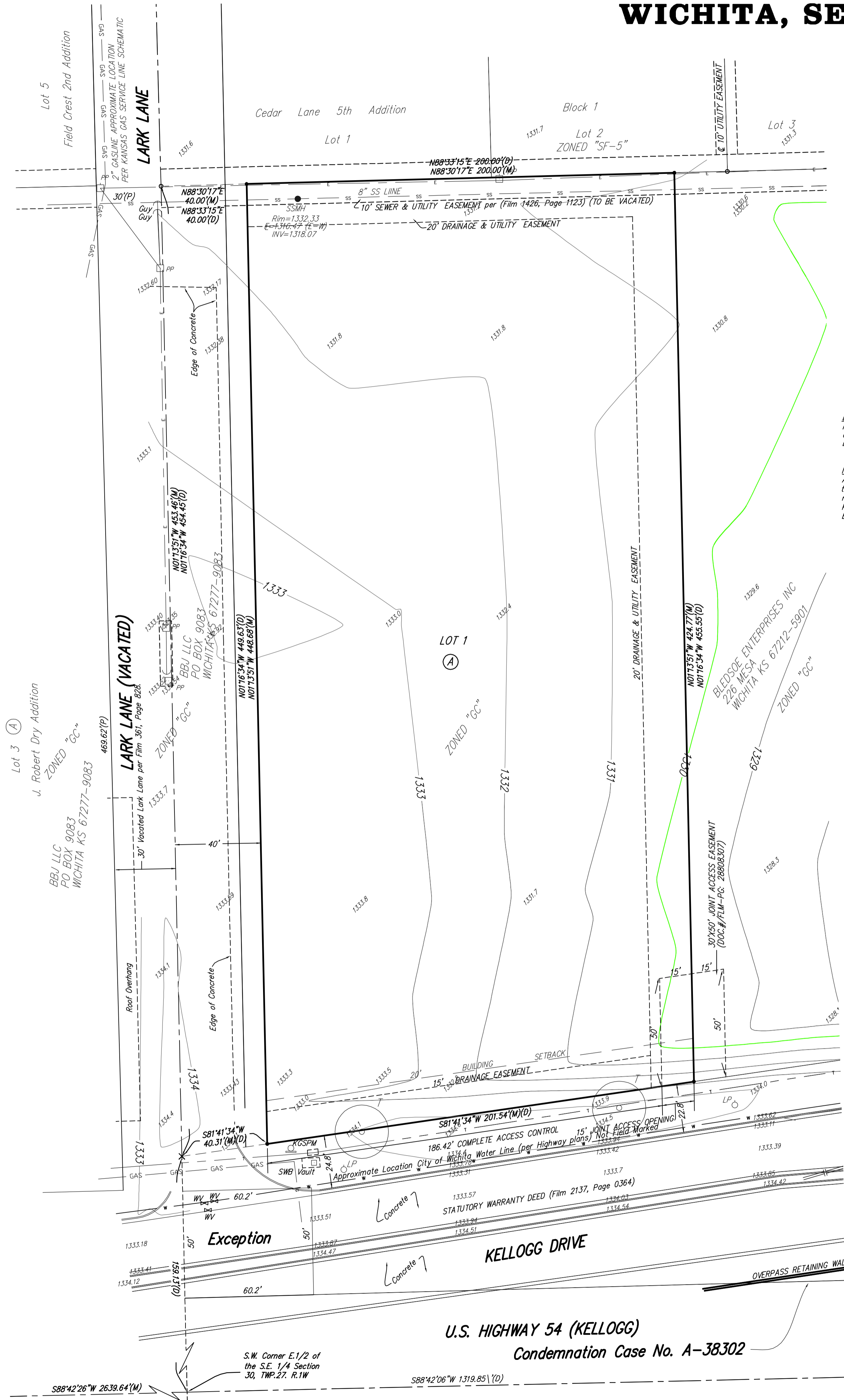


ONE-STEP FINAL PLAT

AUTOCRAFT ADDITION

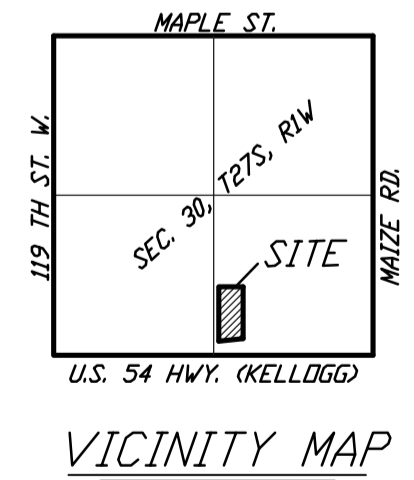
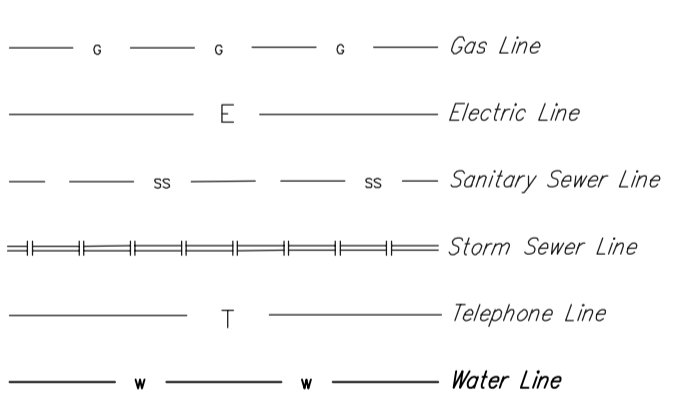
WICHITA, SEDGWICK COUNTY, KANSAS



BENCHMARK:
Maize Rd. & Kellogg - NE. cor. of intersection, City of Wichita
disc, SW cor. of conc. base for traffic signal light pole
Elevation = 1323.97 (N.G.V.D. 29)

NOTE:
A drainage plan has been developed for this subdivision and is on file with the City of Wichita, Kansas. Drainage intent shall remain as depicted or as modified with the approval of the City Engineer of the City of Wichita, Kansas. No obstructions which impede the flow of this drainage plan shall be allowed.

- = #4 Baughman Rebar (Set)
 - = 1/2" Iron Pipe (Found)
 - ✕ = Chiseled Cross (Set)
- (M) = Measured
(P) = Plotted
(D) = Described
- WV = Water Valve
 - WVT = Water Vault
 - KCSPM = Kansas Gas Service Pipeline Marker
 - SWB Ped = Southwestern Bell Pedestal
 - PP = Power Pole
 - ← = Guy = Guy Anchor
 - LP = Light Pole
 - = SSMH = Sanitary Sewer Manhole



State of Kansas) SS
Sedgwick County) We, Baughman Company, P.A., Surveyors in aforesaid county and state do hereby certify that we have surveyed and platted "AUTOCRAFT ADDITION", Wichita, Sedgwick County, Kansas and that the accompanying plat is a true and correct exhibit of the property surveyed, described as The East 200.00 feet of the West 240.00 feet of the following described tract: That part of the East Half of the Southeast Quarter of Section 30, Township 27 South, Range 1 West of the 6th P.M., Sedgwick County, Kansas, lying North of U.S. Highway 54 as condemned in District Court Case #A-38302, except the North 2039.23 feet thereof, and except the East 50 feet thereof for street, and except that part for highway described as beginning at the intersection of the North right of way line of Highway U.S. 54 as condemned in said Case #A-38302 and the West line of said East Half of the Southeast Quarter; thence East along said right of way line, 60.2 feet; thence North 50.0 feet; thence West 60.2 feet to the West line of said East Half of the Southeast Quarter; thence South 50.0 feet along said West line to the place of beginning, and except that part conveyed to the City of Wichita on Film 2137, Page 364.

Existing public easements and dedications being vacated by virtue of K.S.A. 12-512(b).

Baughman Company, P.A.

_____, Surveyor
Michael G. Conrey

Know all men by these presents that we, the undersigned, have caused the land in the surveyors certificate to be platted into a Lot and a Block, to be known as "AUTOCRAFT ADDITION", Wichita, Sedgwick County, Kansas. The utility easement is hereby granted as indicated for the construction and maintenance of all public utilities. The drainage and utility easement is hereby granted as indicated for drainage purposes and for the construction and maintenance of all public utilities. Access controls shall be as depicted on the face of the plat and are hereby granted to the City of Wichita, Kansas. The permitted opening locations shall be as determined by the City Engineer of the City of Wichita, Kansas.

_____, Notary Public
Phillip D. Turner

State of Kansas) SS
Sedgwick County) The foregoing instrument acknowledged before me, this _____ day of _____, 2006, by Phillip D. Turner, a single person.

My App't. Exp. _____

_____, Notary Public

This plat of "AUTOCRAFT ADDITION", Wichita, Sedgwick County, Kansas has been submitted to and approved by the Wichita-Sedgwick County Metropolitan Area Planning Commission, Wichita, Kansas.

Dated this _____ day of _____, 2006.
Wichita-Sedgwick County Metropolitan Area Planning Commission

_____, Chair
Darrell Downing

_____, Secretary
John L. Schlegel

This plat approved and all dedications shown hereon accepted by the City Council of the City of Wichita, Kansas, this _____ day of _____, 2006.

_____, Mayor
Carlos Mayans

_____, City Clerk
Karen Sublett

Reviewed in accordance with K.S.A. 58-2005 on this _____ day of _____, 2006.

_____, Deputy County Surveyor
Tricia L. Robello, L.S. #1246
Sedgwick County, Kansas

Entered on transfer record this _____ day of _____, 2006.

_____, County Clerk
Don Brace

State of Kansas) SS
Sedgwick County) This is to certify that this plat has been filed for record in the office of the Register of Deeds, this _____ day of _____, 2006 at _____ o'clock _____ M.; and is duly recorded.

_____, Register of Deeds
Bill Meek

_____, Deputy
Tonya Buckingham