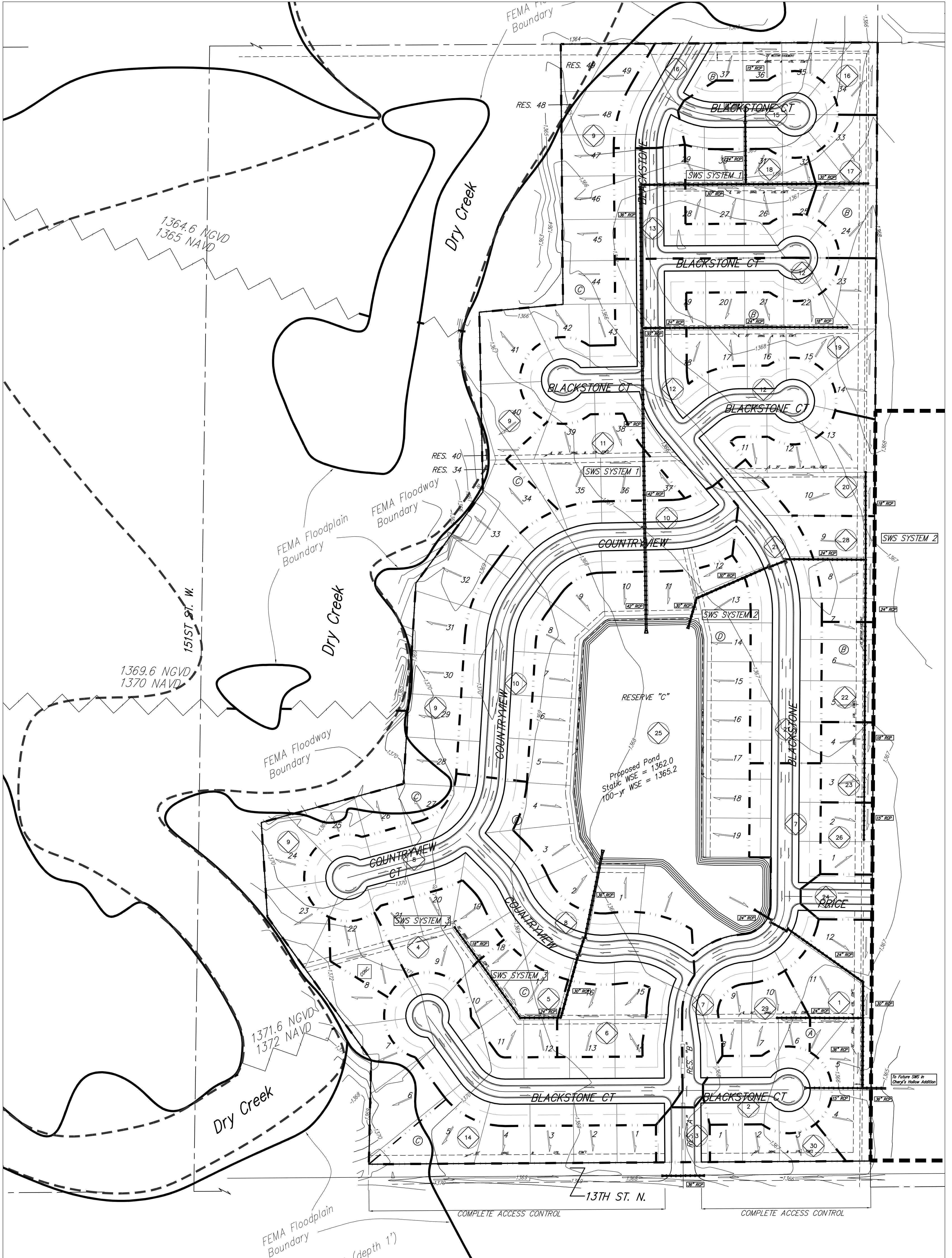


DRAINAGE PLAN

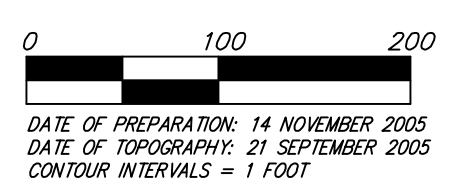
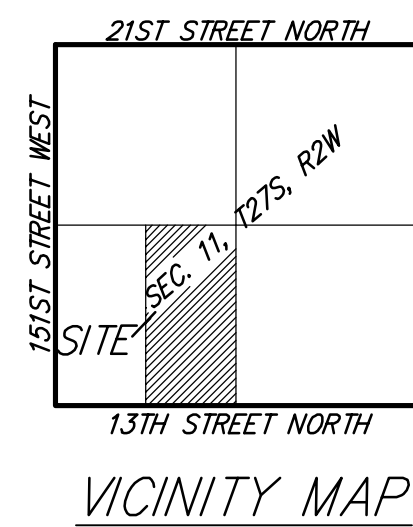
BLACKSTONE ADDITION

WICHITA, SEDGWICK COUNTY, KANSAS



MINIMUM BUILDING PAD ELEVATIONS FOR LOWEST OPENING TO THE STRUCTURES		
LOT	BLOCK	ELEVATION NGVD 29
34-37	B	1366.1
5	C	1373.0
6-8, 22, 23	C	1375.0
24-26	C	1374.0
27-29	C	1373.0
30-31	C	1372.0
32-34	C	1370.5
35, 39-42	C	1369.0
43-45	C	1368.5
46-47	C	1368.0
48-49	C	1367.0
1-19	D	1368.2

NOTE : Floodway, Floodplain, and Base Flood Elevations are scaled per location per Preliminary FEMA FIRM Map Panel 310 of 700 for Sedgwick County, Kansas.



DATE OF PREPARATION: 14 NOVEMBER 2005
DATE OF TOPOGRAPHY: 21 SEPTEMBER 2005
CONTOUR INTERVALS = 1 FOOT

REVISED 22 NOVEMBER 2005
14 NOVEMBER 2005

Baughman Company, P.A.
315 Ella St. Wichita, KS 67211 P 316-262-7271 F 316-262-0149
ENGINEERING | SURVEYING | PLANNING | LANDSCAPE ARCHITECTURE

F:\HYDRO\Projects\Blackstone.dwg\BlackstoneADD_drain_k.dwg