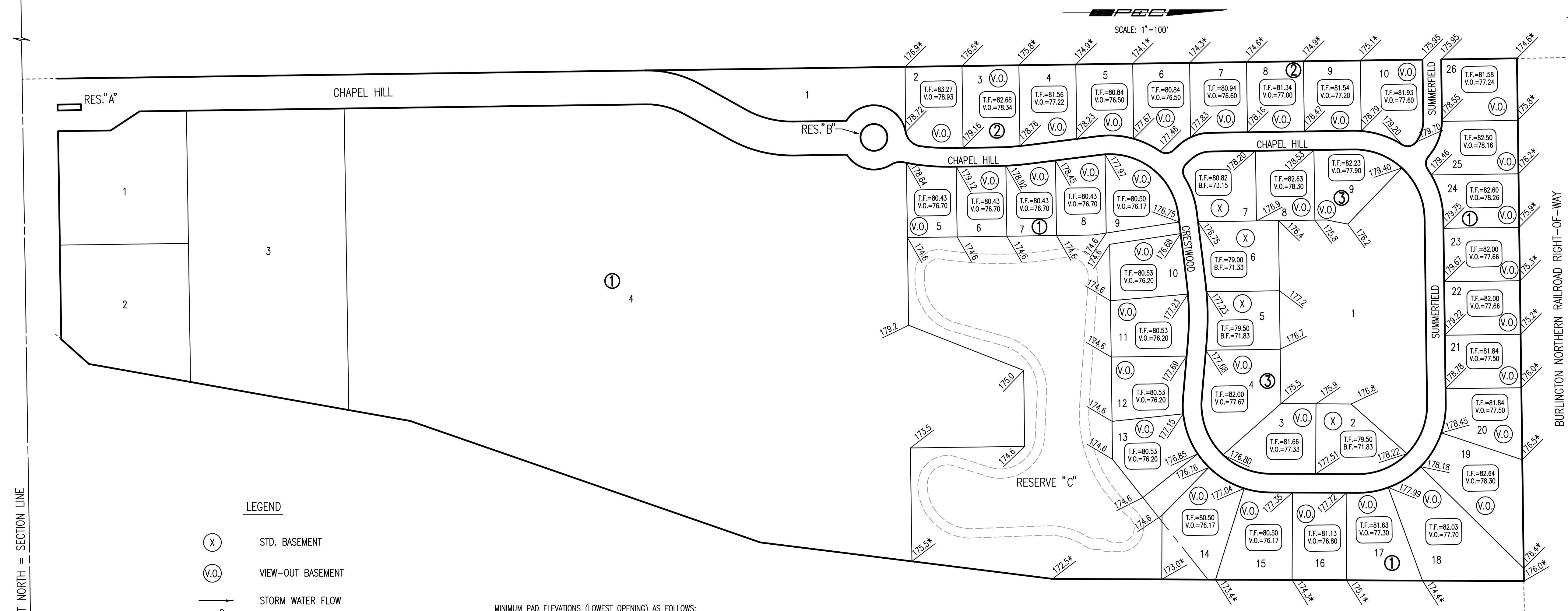


FOUR CORNER PLAN
CHAPEL HILL 2ND ADDITION
 TO WICHITA, SEDGWICK COUNTY, KANSAS

S.W. Corner, S.W. 1/4
 Sec. 10, T27S, R2E
 of the 6th P.M.
 Found 3/4" I.P.

N.W. Corner, S.W. 1/4
 Sec. 10, T27S, R2E
 of the 6th P.M.
 Found R.R. Spike in Pavt.



Q-13TH STREET NORTH = SECTION LINE

LEGEND

- (X) STD. BASEMENT
- (V.O.) VIEW-OUT BASEMENT
- STORM WATER FLOW
- 136.0 SPOT ELEVATION
- 36.0 MATCH EXISTING ELEVATION
- V.O. VIEW-OUT
- T.F. TOP OF FOUNDATION
- B.F. BASEMENT FLOOR

MINIMUM PAD ELEVATIONS (LOWEST OPENING) AS FOLLOWS:

LOTS 4 THROUGH 14 BLOCK 1
 ELEV = 175.60 CITY DATUM
 ELEV = 1363.0 N.G.V.D.

VO OR WO WAS CONSIDERED ACCEPTABLE
 IF THE TOP OF FOUNDATION WAS 5' OR
 LESS ABOVE THE STREET RIGHT-OF-WAY ELEVATION.

K-96 BYPASS

Served 08-22-2006 9:01:08 AM by SWM
 Date of the 00-00-00 9:00:00 AM by SWM
 CA 2003 005930.DWG 005930.DWG 02/28/04 02:59:46 Corner

S.E. Corner, S.W. 1/4
 Sec. 10, T27S, R2E
 of the 6th P.M.
 Found Lead Plug

N.E. Corner, S.W. 1/4
 Sec. 10, T27S, R2E
 of the 6th P.M.
 Found 3/4" I.P. in
 center of Split Stone